

## Deere Announces 20-Foot No-Till Drill

MOLINE, Ill. — John Deere has announced a 20-foot model of its 750 no-till drill with 33 percent more capacity than the company's 15-foot 750.

The 20-foot model features a new semi-integral hitch, ground-drive disconnect, revised seed tubes, and optional high-flotation tires and seed population monitor.

John Deere also announced a new 750 no-till drill two-unit hydraulic hitch that easily positions two 15-foot models for a 30-foot seeding width or a 15-foot 9-inch transport width in minutes.

The 20-foot 750 drill consists of two 10-foot drill boxes mounted in a rigid frame. Each box has its own clutch and drive system. The

drill can be equipped with either plain grain or combination grain/fertilizer boxes with capacities of 2.8 bushels/foot and 3.4 bushels/foot, respectively. A special steel precoated with a baked enamel is used in key areas of the combination box for corrosion resistance.

A new, semi-integral category 2 or 3 hitch allows the drill to be hooked up to the tractor's draft links or quick coupler. This eliminates the need for a drawbar support. The hitch enhances maneuverability and transfers weight to the tractor for improved traction. A dual-caster-wheel hitch is available as an option.

Four 11L-15 tires support the rear of the machine. Optional

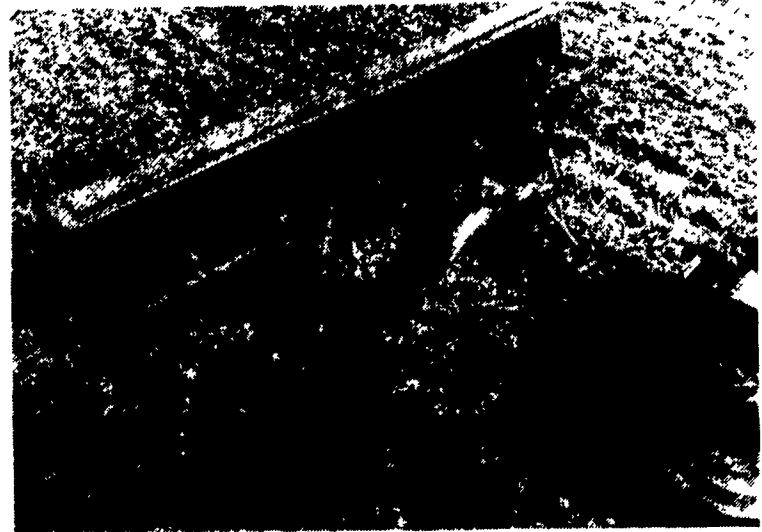
31x15.5-15 tires further improve flotation with more than 70 percent additional surface area.

The ground drive for the fluted seed meters features a disconnect for transport to reduce wear on chains, sprockets, and other moving parts. Revised seed tubes have a new molded elbow that provides more uniform seed flow to the openers.

An optional seed sensor kit accurately monitors seed population of large seeds such as soybeans. Four electronic sensors actually count the seeds as they pass through the seed tubes. The kit is compatible with the 200, 300, or 250 Computer Trak® monitoring systems. The sensors can be connected to the model 100 or 150 monitor if only flow monitoring is desired.

The 20-foot 750 features two ranks of 18-inch, single-disk openers that gauge depth at the point where the seed is delivered to the furrow for uniform emergence. The 20-foot model is available with 7.5-inch row spacing. An optional front-rank, lock-up quickly converts the machine from 7.5- to 15-inch row spacing. Each opener has only one grease fitting, located on the disk hub, for ease of maintenance.

An active hydraulic down-pressure system makes setting opener down-pressure across the drill simple and fast. When the system is connected to closed-center or pressure-and-flow-



The John Deere 750 no-till drill 2-unit hydraulic hitch permits an operator to position two 15-foot 750 drills from a narrow 15-foot 9-inch transport width to a full 30-foot seeding width in minutes.

compensated tractor hydraulics, the "active hydraulics" permit the down-pressure cylinder to extend and retract to maintain uniform down-pressure on the openers for consistent penetration over uneven terrain. For open-center tractors, a single-point hydraulic down-pressure system is available as an option.

Other optional equipment includes a grass seeder attachment for use with small seeds such as alfalfa and grasses, and a half-speed drive kit for drilling at low rates.

The new 2-unit hydraulic hitch features a hydraulic motor, controlled by a toggle switch in the

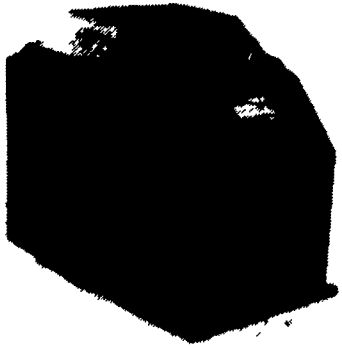
cab, that steers the dual casting wheels of the right-side, trailing drill.

To maneuver the drills into position, the operator releases two manual latches and, while driving the tractor forward, uses the toggle switch to position the "steerable" drill either behind or along side the "lead" drill.

An optional weight-transfer system counterbalances the weight of the 2-unit hitch mechanism on the front drill and is recommended for loose and soft soils.

The drills can be quickly separated for storage or service by removing a pin and disconnecting the hydraulic and electrical lines.

## Drinker Is Super-Insulated



HOUGHTON, Iowa — 100 percent energy free drinker has been added by Pride Of The Farm. This single opening unit is designed for lower stocking densities of cattle, horses, dairy and wildlife. Model WPM16 has 16 gallons of capacity, foam-filled seamless walls which are thicker, providing maximum insulation, and notched flanges for easy anchoring. Contact your Pride Of The Farm dealer or write Pride Of The Farm, Hawkeye Steel Products, Box 2000, Houghton, IA 52631.



### LOOP STALLS

All Loop Stalls Are Coated With Baked On Top Grade Polyester TGIC Powder Coating After Fabrication

- Super Tough Finish
- Protection From Rust & Corrosion
- Superior Electrical Insulation
- Chip Resistant
- Resists Acid & Chemicals
- Smoother Finish Stays Cleaner



### FREEDOM STALLS FEATURING

- Greater cow comfort in shorter stall beds
- Provides additional side head room in the lounge process

### CONVENTIONAL STALLS



Loop Stalls Are Constructed Of:

- 2 3/8" Outside Diameter High Yield Steel Tubing With A 12 Gal. (.108) Wall
- Spray Arc Transfer Method Used On Welds

## PAUL B. ZIMMERMAN, INC.

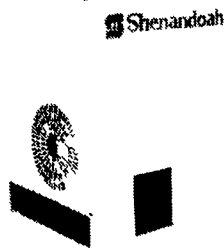
Call or Write For Additional Information And Your Nearest Dealer

Hours Mon. Thru Fri. 7 to 5 Sat. 7 to 11

295 Woodcorner Rd. Lititz, PA 17543-9165 1 Mile West of Ephrata 717-738-7365

## Warm up to our cool weather specials!

### SPACE HEATERS



### GBUV BROODERS



### Shenandoah SPECIALS:

- 170,000-200,000 or 225,000 BTU's with deflector:
- Galvanized Cabinet-Pilot Ignition .....\$329
- Galvanized Cabinet-Electronic Ignition.....\$359
- Stainless Steel Cabinet-Pilot Ignition.....\$379
- Stainless Steel Cabinet-Electronic Ignition.....\$409
- Ag Space Heaters 40,000/60,000 BTU's:
- Stainless Steel Cabinet-Pilot Ignition.....\$319
- Stainless Steel Cabinet-Electronic Ignition.....\$349
- Portable thermostat .....\$35
- Installation kit with gas cock, regulator and hose .....\$35

### SHENANDOAH INCINERATORS:

- Round .....\$999
- Oval.....\$1,359
- The BRUTE .....\$1,999

### Save electricity with screw-in FLUORESCENT LIGHTS

- 5-7-9 Watt .....\$5.49 each
- 13 Watt .....\$5.79 each

New Sealed Center Mount!



- OTHER SPECIALS:**
- Fans & Shutters • Thermostats & Controls
  - Kane Heat Mats • Damaged & Odd Size Shutters - \$25 each as is
  - Get rid of pit gases - 10" & 8" pit manure Ventilation systems on special
  - Woven Wire • Kraft Paper -36"x1500', 3 rolls for \$69

All Prices F.O.B. Lititz, Limited Quantities



Northeast Agri Systems, Inc.

Flyway Business Park 139A West Airport Road Lititz, PA 17543

Ph: (717) 569-2702

STORE HOURS Mon-Fri 7:30 to 4:30 Sat 8:00 to Noon 24 Hr 7 Day Repair Service

1-800-673-2580

PENNSYLVANIA AUTHORIZED CHORE TIME MASTER DISTRIBUTOR