

Dairy and Livestock Sales

Public Auction Register

Closing Date Monday 5:00 P.M.
of each week's publication

THURS. MAR. 31 - 1:30PM, (Due To Easter Lamb & Goat Sale). State Graded Feeder Pig Sale. Located At Carlisle Livestock Market, Inc. Exit 12 South Off I-81. Left Onto Alexander Spring Road. (717) 249-4511.

APRIL

TUES. APR. 5, Farm Machinery. Directions From Williamsport Route 15N To Trout Run Exit Route 14N To Canton In Canton Take Route 414 E To East Canton To Suzuki Dealer On Left, Next Rd. Turn Right, Go To Cross Road Turn Left On Southside Road To Farm On Left, Bradford Co. Terms By, Wilcox Brothers, Kline, Kreider & Good Aucts.

FRI. APR. 15 - 1:30PM, (This Change Is Due To Good Friday). State Graded Feeder Pig Sale. Located At Carlisle Livestock Market, Inc. Exit 12 South Off I-81. Left Onto Alexander Spring Road. (717) 249-4511.

FRI. APR. 29 - 1:30PM, (This Change Is Due To Good Friday). State Graded Feeder Pig Sale. Located At Carlisle Livestock Market, Inc. Exit 12 South Off I-81. Left Onto Alexander Spring Road. (717) 249-4511.

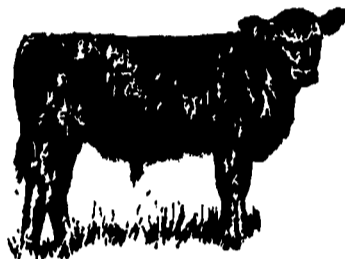
FRI. MAR. 25 - 9AM, Easter Rabbit, Poultry And Fowl Sale. Located At Carlisle Livestock Mkt. Inc. Exit 12 South Off I-81, Left Onto Alexander Spring Road. (717) 249-4511. Receiving 7 Until 9 AM.

FRI. MAR. 25 - 12:30PM, Easter Goat And Lamb Sale. Located At Carlisle Livestock Market, Inc. Exit 12 Off I-81; Turn South Then Left Onto Alexander Spring Road. (717) 249-4511. Receiving 7 Until 11:00 AM.

FEEDER CATTLE SALE

Thursday,
Nov. 11, 1993
7:00 P.M.

Jersey Shore Livestock Auction
814-349-5099 814-349-8760
717-398-0111 Thursday
Livestock Auction
Every Thursday
4:00 P.M.



SOUTH CENTRAL PA CATTLEMENS Graded Feeder Calf Sale

Weikert's Livestock Buying Station
At Thomasville
Friday, November 5, 1993
7:00 P.M.
Blaine Rentzel,
Auctioneer PA Lic. #761

Belleville Livestock Market Annual Fall Heifer Sale

Fri., Nov. 5, 1993
6:00 P.M.

We will be selling 400-500 heifers of all sizes. Open and bred heifers all pregnancy checked in our barn by our vet. Some early consignments include 35 home raised heifers most of them bred, 50 heifers from open on up to springers all from one home. 30 bred heifers some purebreds from Juniata County. 8 purebred Red & Whites registered in Brattleboro, all are shortbred. Consignments are welcome on Thursday or Friday.

For more information call:
(717) 667-2703 Gene Glick
(717) 935-2146 Sale Barn

PUBLIC SALE OF BUILDING SUPPLIES AND HARDWARE ON WED., NOV. 3

At 9 AM

At Good's Auction, 111 North Maple Ave., Leola, Pa.

200 Windows, Double Hung, Casement, Sliders, 5 Bay and Bow Windows, 5 Garden Windows, 300 Door Interior and Exterior Double Doors, Shower Stalls, Bathtub, Vanities and Kitchen Cabinets, Large Lot White Pine Boards, Stair Treads, Stairs Treated Spindles, Roof Vents, Aluminum Coil Stock, 700 Treated Fence Posts, Plywood, Nails, 2 Trailer Loads Lumber, Some Is Treated, Tools All Kinds, Riding Mowers, Steel Work Benches, Welders, Steel I Beams Up to 20 ft. Long 4x6-4x8-6x8 - lot of Air Pipe, Air Filters, Air Valves, Air Hoses, Steel Pipe, Lots of Pipe Fittings Etc. Will Be Selling With 5 Auctioneers Throughout The Day.

Hay and Straw Sale Every Wed. at 10 AM.
TERMS: Cash. No out of state checks. No out of town checks.
AH 000014-L

150-250 HEAD SPECIAL HORSE SALE WORK HORSES MULES DRIVING HORSES

FRIDAY, NOV. 5, 1993

AT NEW HOLLAND SALES STABLES, INC.
12 Miles East of Lancaster, Pa. just off Rt. 23, New Holland, Pa.



Horse Sale 7:00 P.M.

Horses Hitched At 12:00 Noon
Note: Tack Sale 6:00 P.M.
Wagons, Sleighs, Harness, Etc.

7 HEAD WORK HORSES FROM WEST VIRGINIA

1 pr 7 & 8 year old Roans
1 pr 7 & 8 year old Black Geldings, good broke, weighing 2800
1 pr 7 yr old Bay Mare, weighing 3600
1 big Sorrel Horse - good broke
Consigned by Ronnie Patsel

20 HEAD TOP DRIVING HORSES Special Mention

4 yr old Bay Gelding by Arden Trotter
4 yr old Black Gelding by Lake Park am Lindys Pride Trotter
6 yr old Black Gelding by Cooper Love Trotter
5 yr old Bay Gelding by Dream of Glory Trotter

Consigned by Elam B. Stoltzfus

1 load Saddlebred Driving Horses consigned by Christ Z. Stoltzfus.

6 loads Standardbred Driving Horses consigned by: Jonas Beiler, Elam B. Stoltzfus, Clayton Waterberry, Jerome Warner, Reuben G. Stoltzfus, Ben K. Stoltzfus. Plus Many More Consignments By Sale Time.

For more information call:

Norman or David Kolb- 61L
717-354-4341- Barn • Home- 717-397-5538
FAX# 717-355-0706

MARYLAND FALL CLASSIC ANGUS SALE and STEER FUTURITY

Saturday,
November 6, 1993

12:30 P.M.

Dawn Acres Angus, West Friendship, MD
Young Cow/Calf Pairs
Show Heifer Prospects
Bred Heifers
Herd Sires
Club Calves

For information Contact:
Doug Full - Sale Chairman
301-829-2702

FRIDAY
NOV. 5, 1993
10:00 A.M.
TIL ?



BEDFORD, PA

FRIDAY
NOV. 5, 1993
10:00 A.M.
TIL ?

PA Turnpike Exit 11 At The Bedford Fairgrounds

HORSE & TACK AUCTION

We Will Accept Consignments Of All Kinds Of Horses, Mules And Ponies.

CONSIGNMENT AUCTION OF FARM EQUIPMENT

We Will Accept All Types Of Usable Farm Machinery And Horse Drawn Equipment.

We Have Excellent Hay Consigned Both Round & Square Bales. This Will Be A Large All Day And Evening Sale, Consisting Of: New And Used Tack, Harness, Single And Double Trees, And All Horse And Farm Related Items.



ORDER OF SALE WILL BE:

Small Items And Used Tack Begins At 10:00 A.M. Horse Drawn Equipment And Farm Machinery Begins At 1:00 P.M. New Tack Begins At 6:00 P.M., Followed By Horses.

MAKE NOTE: All Large Items Such As Machinery And Horses Will Be Sold In The Order They Are Consigned, First Come First Served.

We Will Be At The Fair Grounds All Day Thursday, Nov. 4, 1993 To Accept Consignments.

Skid Loader, Kubota Blower, Satoh 650, Tilt Back Truck With Wench, Some Real Good Horse Drawn Equipment.

FOR INFORMATION CONTACT: DORSEY D. MUSSELMAN, R.D.#2, BOX 704, BEDFORD, PA. 15522.

PHONE: (814) 623-5056.

SALE WILL BE HELD AT BEDFORD COUNTY FAIRGROUNDS, BEDFORD, PA.

TERMS: Cash or Approved Check.

AUCTIONEERS: DON WISHARD AU001029L

STANLEY CLAYCOMB AU000155L