

Public Auction Register

Closing Date Monday 5:00 P.M.
of each week's publication

SAT. OCT. 30 - 9AM Terre Hill Timbers, Benefit Sale at Terre Hill Memorial Park, antiques, Terre Hill Memorabilia, quilts, furniture, household goods, appliances, etc. Bob Wenger, Donation items welcome.

SAT. OCT. 30 - 9AM, Farm & Orchard Equipment. Located Off Interstate 83 Exit 11, Take Board Road Toward Manchester, Go To Willow Springs Road, Turn Left To 1st Farm Lane On Right. Seller, H.S. Gross & Sons. Rentzel's Auction Service.

SAT. OCT. 30 - 9AM, Antiques, Furniture, Tools, Guns, Coins, Car, & Household Goods. Located At 760 Pequea Avenue, Gap, Pa. From Route 30 & 41 In Gap Take Route 30 West To Pequea Avenue (First Left) Turn Left To Auction On Right, 15 Miles East Of Lanc. - 10 Miles West Of Coatesville - Watch For Signs. Auction Conducted For, Norman & Elizabeth Ellis. Barr & Davis, Aucts.

SAT. OCT. 30 - 9AM, Antiques & Household Goods Loc. Take Rt 222 So Of Lancaster 8 Mi Through Refton 1 Mi To Property On Left Terms By, Landis H Ressler Kreider, Kline & Good Aucts

SAT OCT 30 - 9AM, 2 Tracts Of Valuable Real Estate, Antiques, Household Goods & Coins Located At 665 Mt Airy Rd, Stevens, West Cocalico Twp. Take Rt 272 N From Ephrata To Red Light At PP&L Building, Turn Left Onto Schoeneck Rd, Go About 3 Miles, Then Turn Left On Mt. Airy Rd. To Sale! Terms By, Mabel E Ream. Art Pannebecker Auction Service.

SAT. OCT 30 - 9AM Real estate, household items, antiques, tools, guns, 2 campers. Located between Manheim & Mt Joy (Approx. 1 mile NW of Sporting Hill) at 513 Fairview Rd, Rapho Twp, Lanc Co, Pa Gladys Balmer. Curtis Shenk, Terry Matthews, aucts.

SAT. OCT. 30 - 9AM Lawn Care, Landscaping and Farm Equip. Oley Fairgrounds, Jefferson St., Oley, Pa. Just Off Rt. 73 between Boyertown and Reading For Breezy Water Farms, Fleetwood, Pa. Ken Heffner, auct.

SAT. OCT. 30 - 9AM Valuable Tractor, farm equip., antiques, house items.

misc. Dover, Pa. From I-83 exit 11 (Emigsville) take Rt. 238 W to signal light, turn R & go ±2.4 mi. on Susquehanna Trail. Turn L & go ±2.4 mi. on Canal Rd. (Rt. 921 W) to Neiman's Garage. Turn R & go ± 1.3 mi. on Mill Creek Rd to sale. Or from Dover take Canal Rd. (Rt. 291 E) to Neiman's Garage. Turn L & follow Mill Creek Rd. ± 1.3 mi. to sale on left. Owner: Elsie Wallace. Melvin Haines, Ralph Brennenman, aucts.

SAT. OCT. 30 - 9AM, Real Estate, Antiques, Household Goods & Collectibles, Coins. Located In Shamokin Dam, Snyder County, Pa. Turn Right Off Routes 11 & 15 At Aldi's Food

Store Onto Eighth Avenue, Travel 1 Block And Turn Left Onto Helen Street To Auction Site. Watch For

Auction Signs Day Of Auction. Owner, Florence G. Aucker. Roger A. Lauver & Dean E. Longacre, Aucts.

SAT. OCT. 30 - 9AM, Tractors, Car & Engines, Guns, Tractor Parts & Implements, Lawn Mowers & Accessories, Shop Tools & Supplies. Located Alfred Grove Estate, Mifflinburg, R.D., Union Co., Pa. Route

45, 1.5 Miles East Of Hefleton To U. Lutheran Church, North 1.5 Miles To Pleasant Grove, South On Route 3003 1.5 Miles to Auction. Watch For Auction Signs. Leon J. Smith, Jr, Auct.

PUBLIC AUCTION

FARM MACHINERY
SATURDAY, NOV. 6, 1993
10 A.M.

A. WARREN KULP
258 ELEPHANT ROAD, PERKASIE, PA.
½ MILE NEAR DUBLIN,
SIGNS WILL BE POSTED.

John Deere 4020, Power Shift, John Deere Semi-mount 16" plow 5 bottom, New Holland #25 Blower, 2 Bale Wagons, 2 Grain Wagons, Power take-off Generator (mounted on trailer), 1 row New Idea Corn Picker, John Deere 30" 7000 Conservation 4 row drive fertilizer, Corn Planter, John Deere 346 Baler w/Kicker, 7" John Deere 1217 Mower Conditioner, New Holland 256 Hay Rake, 30' New Idea Bale & Grain Elevator, 220 Bu. New Idea Manure Spreader (almost new), John Deere 1 row Corn head & 2 row 40" head, Patz Barn Cleaner-200' Chain 2 hp elect. motor, (2) John Deere flat Wagons, 675 Gal. Girton Milk Tank w/new Frick Compressor 5 hp. Elec. Motor, Metal Fence Gates, Water Tubs, Grain Auger w/elec. motor, Water Softener, Wheelbarrows, Misc. Milling Equip. and Farm Tools, John Deere Cultivators for Model B, John Deere, LA John Deere-44 Ex. Condition, 1½ Hp Jaeger Gas Engine, Ant. Elgin Bike w/Book and other Misc. Items.
Terms: Cash or Good Check Food
Col. Bill Holland, Auctioneer
Lic. #AU-000425-L
215-982-5752

NOTICE
COW CALF
DISPERSAL
FOR KUNDRATIC FARMS

Wayne County, PA
At New Holland Sales Stables, Inc.
THURSDAY, NOV. 4
1:00 P.M. Feeder Sale

30 Young Angus Hereford Crossbred Cows and their Calves sired by a Charolais bull. Bull calves have been castrated. Good set of cows that have calved in May and June. Rebred to Charolais Bull. Will be Vet checked for pregnancy at Sales Stables.
Represented by John Wetmore
717-253-5329

Reminder

HARRIS
Milking Herd &
Bred Hfr. Sale

Located just off Rt. 15 on Morgan Creek Rd., Lindley, NY, 12 miles from Corning, NY; 20 miles from Elmira, NY; 2 miles from Lawrenceville, PA; 20 miles from Mansfield, PA. Watch for auction arrows on Rt. 15 in Lindley at blinker light & little white church. 1 mile to farm.

TUES., NOV. 2

At 12:30 pm Sharp

70 High Grade Holsteins - 70
**** 60 Cows In All Stages Of**
Lactation

10 Springing Heifers **

Interstate Tested - Preg Exam -

Shipping Fever Shots

*** Refer to last week's paper**
for complete listing *

Lunch Available Catalogs at Ringside

Owners:

LELAND &
JOYCE HARRIS
607-523-8867

Auctioneer: Art Kling

For the MOST in advertising coverage
& preparing your sale!"

Sales Managers:

WOODS AUCTION SERVICE

GORDON WOOD & SONS - MANSFIELD, PA
717-549-4901 or 717-835-5857

Reminder

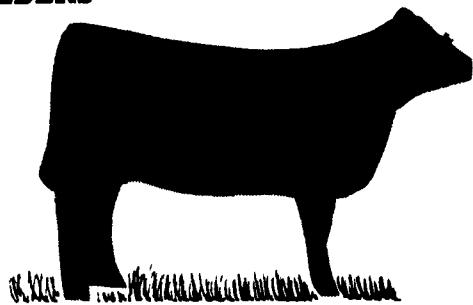
Annual Fall Female Sale

12 p.m., Saturday, November 20, 1993

At the famous Buck & Doe Run Farm
near Coatesville, Pennsylvania

Over 150 Head Sell

The largest selection of
performance Angus genetics
to sell at auction in the
Eastern United States!



ANNALEA FARMS, LTD.

Tom & Elise Bulger
P.O. Box 773
Healdsburg, CA 95448
(707) 433-3588

BUCK RUN FARMS

Bill Elkins
RD 8, Box 432
Coatesville, Pa 19320
(215) 486-0789

DEEP RUN FARM

Jim & Betsy Sargent
Box 610
Unionville, Pa 19375
(215) 347-0239

TWIN CLAY FARMS

Frank & Susan Walton
RD 8, Box 322
Coatesville, Pa 19320
(215) 486-0972

TWIN OAK FARMS

Fred & Fritz Frey
372 Puseyville Road
Quarryville, Pa 17566
(717) 786-2146

For your free reference catalog, contact anyone in the office of the Sales-Managers. TOM BURKE AND DICK BECK, AMERICAN ANGUS HALL OF FAME, at the WORLD ANGUS HEADQUARTERS, Box C-2, Smithville, MO 64089-0817 Phone (816) 532-0811.

PUBLIC SALE

350 M/L MILK BOTTLES, FISHER PRICE
TOYS, 4 PEDAL CARS, 3 PEDAL
TRACTORS, SKILLETS, WINROSS TRUCKS,
TOYS, CAST IRON PCS., HUBLEY CARS
SATURDAY, NOVEMBER 20, 1993
SALE TIME 9:00 A.M.

Sale To Be Held At Farmersville Fire Hall, Farmersville, Pa., Lanc. Co., 2½ Miles Off Rt. 322, At Martins Bike Shop Turn On Farmersville Rd. In Hinkletown Follow Farmersville Rd. To Sale. Watch For Signs.

2 HUBLEY METAL CARS
3 FIRE CHIEF PEDAL CARS

(In Like New Condition)

3 Mercury Pedal Cars For Parts, Murray Diesel Pedal Tractor, Plus 2 Other Pedal Tractors, Private Collection Of 60 Fisher Price Toys, Dinky & Match Box Cars & Trucks, Ertl Toy Tractors & Machinery, Winross Pepsi Trucks, Yingst Auto Sales. Cast Iron: Uncle Sam Bank, Monkey Bank, Rabbit Bank, US Mail Horse Wagon, Airplane, Sm. Dogs, Bull Dogs, Cat, Shoe Scraper, 2 Glass Bear Banks, 2 Milk White Chicken On Nest, Afghan, 45 Cast Iron Skillets In Different Sizes & Names Of Griswold, Martin, Puriton, National, Sidney, Erie, Wagner, Sidna, Boyertown, Warpak, Indian Skillets, Griswold Large Kettle, Griswold Dutch Oven, 1 Cast Iron Grill To Hang At Fireplace Over 100 Yrs. Old, 3 Griswold For Cupcakes, Lg. Griswold Kettle, 2 For Pancakes, 350 Milk Bottles, Creamers, Milk Cases, Signs, Cream Top Spoons, Bottles Of Interest: Birch-Mar Dairy- Blue Ball, C.W. Martin- Monteray, Martins Dairy- Lanc., Kunkle Dairy- Orwigsburg, Dairy Fresh Ice Cream Scoop, Weavers Dairy- Malvern, Norbeth- Bethlehem, Mismer Wood- Phila., West Wood Farm- Md., Maplecroft- King Of Prussia, Allentown Dairy- Allentown, Glen L. Fox- New Stanton, Peach- eys Dairy- Elverson, Grandview- NJ, Dublin Coop Dairies- Dublin, Ga., Cloister Vita Glo Brn. Bottles, Cloister Dairies ½ Pt. Bottles, Hersheys- Lebanon, Miley Bros.- Ephrata, White Oak Farms- Terre Hill, Queen Dairy Quarts Show Bottles, White & Chocolate & Crates, Bottles From: PA, NJ, NY, ME, VT, GA, Washington DC. Winross Racing Scene Trucks- Bill Elliot Coors Red & Coors Light Blue, Ken Schrader, Richard Petty & Fan Appreciation Truck, Darrel Waltrip, Kyle Petty, Winston 1971-1990, Bobby Hamilton Country Time, JD McDuffie, Plus Many More Items. If You're A Collector Of Milk Bottles, Fisher Price Toys And Other Toys, Don't Miss This Sale.

TERMS BY:
SNYDERS AUCTION
SERVICE

AGENT FOR OWNERS
SNYDERS AUCTION SERVICE
Paul (717) 733-7052 AU-873L
Michael (717) 872-1884
Milk Bottle Catalogs- \$2.00

Out Of State Buyers Need Current
Bank Letter Of Credit Or Cash
Refreshments

ESTATE AUCTION
THE ESTATE OF
JAMES E. FORBES

late of Balto. County will be sold on the premises formally known as 9709 Sherwood Road, Owings Mills, Maryland 21117.

SAT., NOV. 6, 1993
10:30 A.M.

(From 695 to 795 to Exit 4B follow signs to Newtown, Owings Mill Blvd. to right on Lakeside to end and right on Dolefield to immediate left on Upper Mill Ct. Follow Auction Signs day of sale.)

REAL ESTATE: Four bedroom single level home w/swimming pool, tennis court, 2½ baths, full windowed L.R., enclosed studio, terraced, barns & outbuildings located on approx. 4.8 acres surrounded by Soldiers Delight State Park. Accessible from 795 (open house 10/31 1-3.)

DECOYS: Decoys including Gibson red-head, Holly Highneck canvasback, Pr. Mad Mitchell baldpates, Gibson goose, V. Eastern Shore blue bill, quillen Blue Bill, Wards Miniature Pintails Pr.; Early Va. Shore Birds; Va. Flattys; Rockhall Baldpate; Hawthorn Shorebird; Barnes Highneck Canvasback, Balsum Geese, Victor Shells, Silhouettes, Selection of Primitive Birds and Carvings, Lg. Selection of Decoy & Carving Books includ 1st Edit. Gunning Chesapeake, Signed Word Book, Easton Waterfowl Fest Books from '72; Collection of Books on Boating, Sailing, Photography, Antiques, Collectibles, Trains, Many Early Books.

FURNITURE: Butcher Block Table; Gov. Winthrop Desk, O.G. Mirror, Cherry Dropleaf Table, Walnut End Table, 4 Poster Barclay Bed (Unassembled); Spool Cabinet; Rush Seat Rockers & Chairs; 4 Captains Chair, Pine Stands; 40 Drawer Primitive Cabinet; Early Benches, Tables; Windsor Chair; Misc. Antique Furnishings, Much More...

MISCELLANEOUS: Collection of Model Trains Including HO, Standard Gauge w/ Many Garden Buildings, Accessories; Model A Ford Truck; 1928 Ford Roadster Body w/ Chassis & Misc. Parts; 17' Sailstar Sailboat, 14' Phantom Sail; International Cub Lowboy Steiner 520 Mower; Crocks; Oil Lamps; Antique Hand Tool Collection w/Draw Knives; Carving Tools; Lg. Selection of Reg. Humelstocks; Early Unique Lawn Jockey; Lg. Selection of Magazine & Collectible.

Auctioneers Note: Still only a partial listing. Please plan to attend or call for details.

TERMS OF SALE: Real Estate, A Deposit of \$30,000 required day of sale. Balance in 60 days. Interest on unpaid purchase price at 10%. Buyer to assume all settlement costs. Full terms day of sale. Final bid must be acceptable to estate.

Personal Property. Cash or Approved Check. Immediate removal, no guarantees, as-is, no buyer premium.

Auctioneers:
F.B. Russo, Jr. D. Andrew Cashman
Frank B. Russo, Jr. Auctioneers Inc.
P.O. Box 348
Stevenson, Maryland 21153
(410) 560-0665