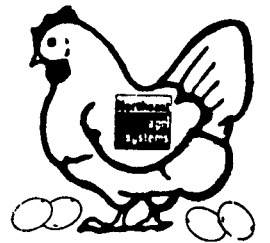


Thanks & Congratulations

to



GIROUX'S POULTRY FARMS Chazy, NY

Introducing the first **CHORE-TIME** DURAKO cage system

6 row 4 tier **CHORE-TIME** DURAKO dropping board cage system with **CHORE-TIME** turbo ventilation system and **CHORE-TIME** turbo scraper system.

Introducing Durako - Chore-Time's new layer cage designed with customer input.

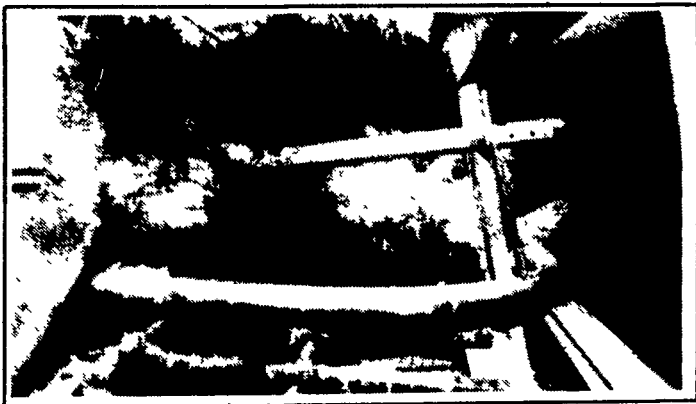
1. You asked for no manure pass through to get cleaner eggs. This is a new dropping board system available with Chore-Time's plastic rails and plywood dropping boards or all plastic dropping boards.
2. You asked for better nipple placement. The 16 inch high cage top allows nipples to be placed high to stop accidental triggering and birds waste less water because they reach straight up to drink. There is enough space between tiers to put nipples on stands which allows birds to reach nipples from anywhere in the cage. And the cages are spread out so nipples are in the light plus back away from the feed trough.
3. You asked for more space for your layers for better protection. This cage is 16 inches tall in the front and 12 inches tall in the rear with nothing cut off for a curtain. The front tips out for additional bird comfort.



CHORE-TIME variable speed rubber finger collector
CHORE-TIME dual auger fill system **CHORE-TIME** turbo air inlet for each row of cages



CHORE-TIME Uni Back top cage, plywood dropping boards with plastic rails, solid steel scraper sled w/stainless steel blades and cables



CHORE-TIME Durako cage 16" tall at front and 12" tall at back for maximum bird comfort



CHORE-TIME 45° bracket with 2x4 step rails protects cages and gives easy access to top tiers



CHORE-TIME turbo scraper system with dual stainless steel blades

It's another **ULTRAFLO**® by

CHORE-TIME



Your authorized **CHORE-TIME** master distributor

Northeast
agri
systems

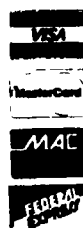
Northeast Agri Systems, Inc.

Flyway Business Park
139A West Airport Road
Lititz, PA 17543

Ph: (717) 569-2702

STORE HOURS: Mon.-Fri. 7:30 to 4:30
Sat. 8:00 to Noon
24 Hr. 7 Day Repair Service

1-800-673-2580



For information as to why more layers are producing more eggs on less feed with less maintenance call or write and we'll show you that **CHORE-TIME** DURAKO & **CHORE-TIME** systems are the best cage systems in the world.

Contact Larry Horst: (office) 1-800-673-2580
(home) 717-656-7799