

# Students Can Show An Animal, Raise Money For Tuition

**ANDY ANDREWS**  
Lancaster Farming Staff  
HARRISBURG (Dauphin Co.)  
— Any student who is going to college or who plans to enroll in a trade school, technical school, junior or community college, or school of nursing can qualify for one of six \$1,000 scholarships to be presented at the 1994 Pennsylvania Farm Show.

The Pennsylvania Farm Show Scholarship Foundation unveiled the details of the new college scholarship program during the recent Keystone International Livestock Exposition in Harrisburg.

Any FFA'er or 4-H'er is eligible for the scholarship. The scholarship concept was created at the Farm Show Sale last January when Mark Simmon of Lebanon 4-H, after accepting only \$5,000 of the original \$15,100 bid, donated the remaining \$10,100 to a new endowment fund to provide scholarships to agriculture students.

To be eligible, a student must have exhibited at the 1993 Pennsylvania Farm Show Junior Market Livestock Show, and must be enrolled in a post-secondary educational institution. If they exhibited prior to 1993, they are not eligible. If they exhibited junior breeding livestock and not junior market animals, they are not eligible, according to the scholarship guidelines.

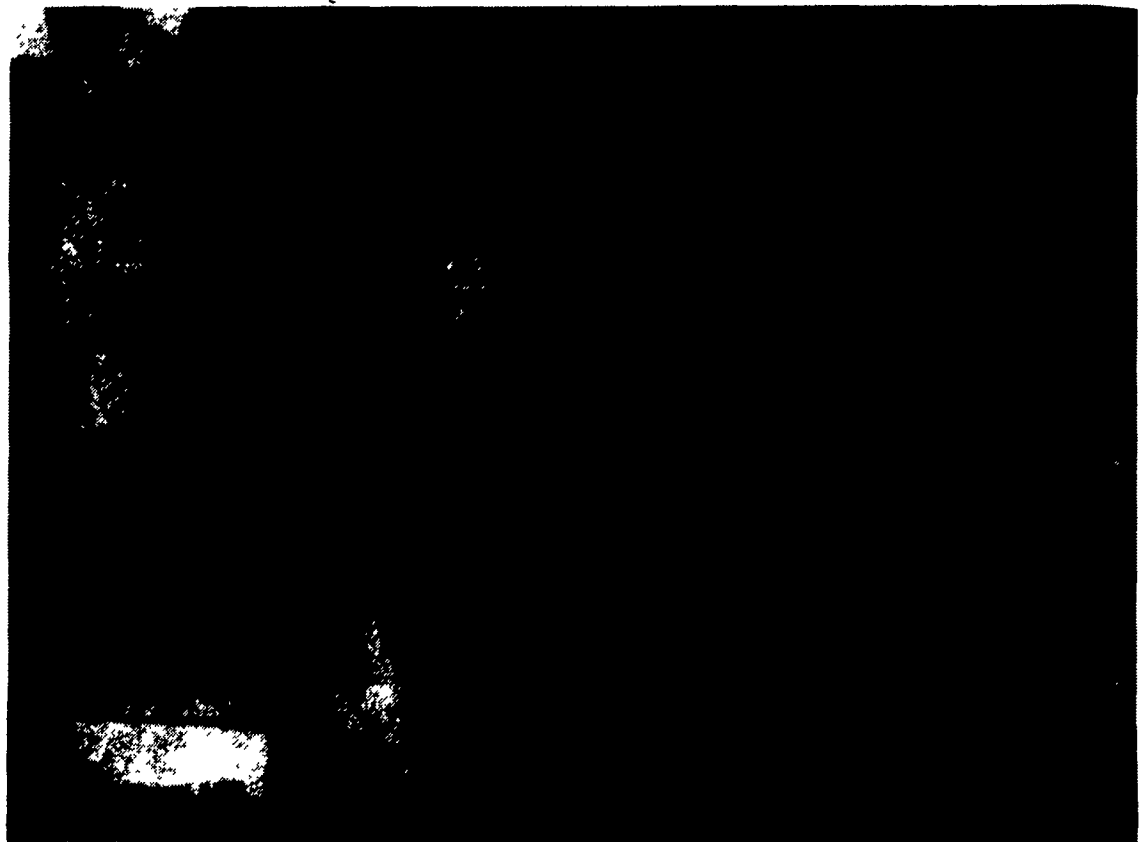
Half of the awards will go to students studying agriculture, but half

may be in any field of study. The scholarship committee has chosen to reimburse students for tuition already paid rather than send the award through the institution's financial aid offices.

According to the guidelines, six awards of \$1,000 each will be given at the beginning of the sale of champions at the 1994 Pennsylvania Farm Show, to be held January 8-13. Sale date is Thursday, January 13, at 10 a.m.

Buyers of livestock at the Junior Market Livestock Sale will be encouraged to donate back the market value of the animals they buy to the scholarship fund. The committee is actively involved in getting more businesses involved in the junior sale. A portion over a set amount of high-selling animals will be deducted for the scholarship fund. Also, 4 percent of the sale price of all animals will be used to support the scholarship fund.

Seventy-five percent of the sale price over the following prices will be deducted and used for scholarships: market steers, \$12,000 for grand and \$4,000 for other champions; market swine, \$5,000 for grand and \$3,000 for other champions; and market lambs, \$2,000 for grand and \$1,200 for other champions. The prices were arrived at by average sale price for the sale of champions during the last five years at the junior livestock sale. Highs and lows were exempted



Students can qualify for one of six \$1,000 scholarships if they exhibit at the Pennsylvania Farm Show Junior Market Livestock Show. At the 1993 Farm Show, Mark Simmon, holding the banner to his grand champion market swine, helped start the scholarship foundation fund by giving \$10,100, from a syndicate of buyers, from the proceeds of the sale to the fund. From left, Robert Klugore, manager of a Paso Fino horse farm owned by buyer Glatfelter Agri-business Insurance of York, and Glatfelter representative Tony Dobrosky; Butch Clemmens, president of Hatfield Quality Meats; Bill Campbell, chief executive officer, Hoss's Steak and Sea House; and Boyd Wolff, state secretary of agriculture.

from this average.

Students who have sold junior

livestock animals at the Pennsylvania Farm Show since 1993 may obtain scholarship applications by calling Ken Winebark at (717) 270-4391. Application deadline is

November 12. For information on how to apply, contact the local cooperative extension office or local FFA adviser.



**B&M FISHER'S PAINTING & FISHER'S PAINT OUTLET STORE**  
QUALITY PAINTS @ REASONABLE PRICES

- ALL TYPES OF INTERIOR & EXTERIOR PAINTING
- SANDBLASTING ■ ROOF COATING
- RESTORATION & WATERPROOFING ON STONE & BRICK BUILDINGS

HOUSES - BARNs - FENCES - FACTORIES - ETC.

*Specialists In Sand Blasting/Spray Painting Farm Buildings, Feed Mills, Roofs, Tanks, Etc. With Aerial Equipment*

4056A Newport Rd., Kinzers, PA 17535 717-768-3239  
On Rt. 772 Across From Pequea Valley School

*Brush, Roll Or Spray - We'll Do It Either Way  
For Jobs Large Or Small - Our Men Will Do It All*

**WHITEWASHING with ADVANTAGE FARM WHITE**

- DRIES WHITE • NO WET FLOORS
- IS COMPATIBLE WITH DISINFECTANT AND FLY SPRAYS
- DOES NOT RUB OFF EASILY
- WASHES OFF WINDOWS & PIPELINES EASILY

**BARN CLEANING SERVICE AVAILABLE WITH COMPRESSED AIR**

To have your barn cleaned with air it will clean off dust, cob webs & lots of the old lime. This will keep your barn looking cleaner & whiter longer.

**CALL US ABOUT ON THE FARM FLY CONTROL**

Serving Southeastern Pa. And More

**BEITZEL'S SPRAYING**  
Witmer, PA 17585 717-392-7227 or  
Toll Free 1-800-727-7228 7:00 AM to 5:00 PM

**CERTIFIED COMMERCIAL APPLICATORS LICENSED 32 Years Experience INSURED**

5 Trucks For Air Cleaning And Whitewashing  
RADIO DISPATCHED TRUCKS  
Barn Spraying Is Our Business, not a sideline.  
- Spraying Since 1961

## Needed immediately: new housing for

- Turkey Contracts
- Layer Contracts      ■ Pullet Contracts
- Hog Finishing Contracts



**Contracts Available For**  
• Tom & Hen Turkeys  
7,200-15,000 Blrds  
Two 50'x620' Tom Turkey Houses



**Contracts Available For**  
• Layer Houses:  
90,000-126,000 Blrds  
108,864 bld CHORE-TIME layer house with ULTRAFLO® feeding



**Contracts Available For**  
• Hog Finishing:  
1,000-3,000 Head  
• Sow Units: 200-1,800 Sows

101'x245' 3000 head tunnel ventilated hog finishing house

**1-800-673-2580**

For information on new contracts being offered by local feed and livestock companies

**Northeast agri systems**

Northeast Agri Systems, Inc.  
Flyway Business Park  
139A West Airport Road  
Lititz, PA 17543  
Ph: (717) 569-2702

STORE HOURS: Mon.-Fri. 7:30 to 4:30  
Sat. 8:00 to Noon  
24 Hr. 7 Day Repair Service

1-800-673-2580