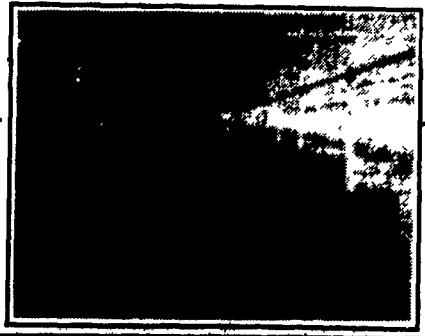
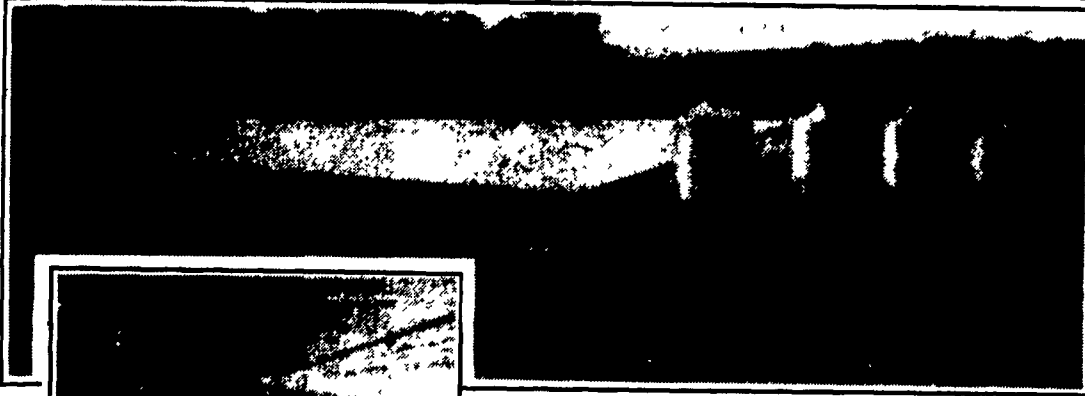




FARMER BOY AG INC.



Your Complete Swine Building & Equipment Center



2000 HEAD FINISHER
★ PA'S OLDEST & MOST EXPERIENCED SWINE BUILDING & EQUIPMENT COMPANY

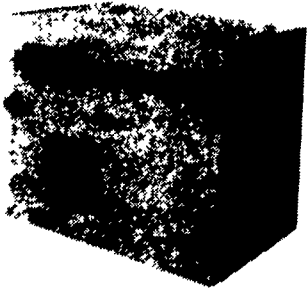
ADD INCOME TO YOUR FARM
CONTACT FARMER BOY AG... Your Professional Company

- Assistance In Securing Building Permits
- Assistance In Nutrient Management Planning
- Custom Design
- Assistance In Financing

EARLY BIRD HEATER SPECIALS - COLD WEATHER IS JUST AROUND THE CORNER!
AGRICULTURAL HEATERS (45,000-75,000 Btuh)

with Hot Surface Ignition

- Durability • Performance
- Safety • Quality



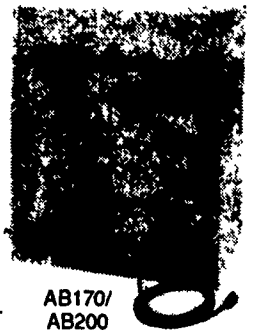
- "Master Control" Panel--All control components totally enclosed for protection from dust, dirt and moisture
- Totally Enclosed Case--Suitable for washdown.
- Hinged Access Panels--Quick and easy access to all components for fast service.
- Variable BTUH Output--Let's you adjust from 75,000 BTUH (maximum) down to 45,000 BTUH (minimum).
- Exclusive "System II" Hot Surface Ignition (HSI) Featuring:
 - "6-16 LED Analyzer"--6 distinctive light combinations pinpoint up to 16 possible operation interruptions.
 - Self-Diagnostic Monitoring--Continuously monitors all primary functions
 - 15-Second "Chill Guard"--Shuts down fan for 15 seconds during start-up sequence, preventing chilling animals.
 - Auto Fan Shut-Down--If burner shuts down, system automatically stops fan preventing drafts.

BOTTOM-DRAW 170,000 & 200,000 Btuh
Hot-Surface Ignition AGRICULTURAL HEATERS
with EXCLUSIVE "Master Control" Panel



- "Master Control" Panel--All control components totally enclosed for protection from dust, dirt and moisture.
- Enclosed Case--Suitable for washdown.
- Hinged Access Panels--Quick and easy access to all components.
- Exclusive "System II" Hot-Surface Ignition (HSI) System Featuring:
 - "6-16 LED Analyzer"--6 distinctive light combinations pinpoint up to 16 possible operation interruptions.
 - Self-Diagnostic Monitoring--Continuously monitors all primary functions
 - 15-Second "Chill Guard"--Shuts down fan for 15 seconds during start-up sequence preventing chilling animals.
 - Auto Fan Shut-Down--If burner shuts down, system automatically stops fan preventing drafts.
- Eyebolt and Chain Mounting System--Easy to install. All hardware included with each heater.

- Durability
- Performance
- Safety
- Quality



• Certified Under Agricultural Requirement 5-88.

AB170/
AB200

Demand quality, Demand the best... Demand L. B. White

DOUBLE L GROUP LTD.

NEW WEAN HEALTHIER LITTERS AND PROTECT YOUR SOWS WITH

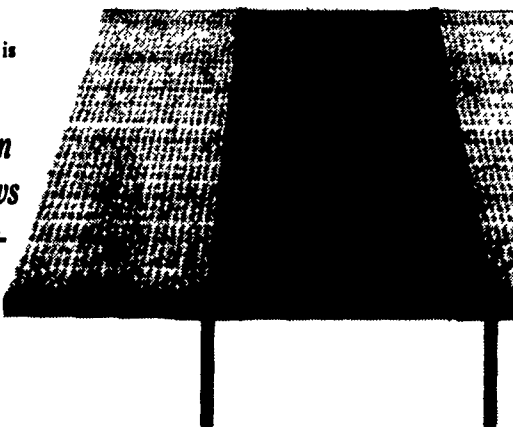
DOUBLE L'S SCHONLAU/FILTER-EEZE® FLOORING SOLUTION

For your sows, Double L/Schonlau cast iron provides a slip-resistant, durable surface that safeguards against teat and foot injuries and shoulder abrasions. It allows superior manure filtration, cleaning and disinfecting, and will not harbor diseases. With Double L/Schonlau cast iron, you have a proven farrowing floor with an unmatched warranty and service life that gives your sows their best chances for maximum production.

For your piglets, Double L/Filter-Eeze® provides a warm creep, nursery, and grower flooring line which is disease resistant and helps combat scours, the num-

ber one killer of baby pigs. It cleans extremely well and doesn't rob needed body heat, promoting faster gains on less feed.

Double L Group Ltd. knows of no better flooring combination worldwide that will outperform or give you a better return on your investment than Double L/Schonlau Cast Iron Sow Slats and Filter-Eeze Creep Slats.



Our tested and proven system treats the sows and her piglets differently, because their needs are different.

Save 30% On Your Electric Bill with our 175 Watt Heat Bulb

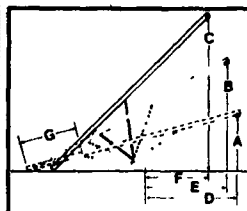
Long Lasting 8,000 Hours
 These 175 watt heat lamp bulbs put out as much heat as a 250 watt bulb but use 30% less electricity at \$.10 per K.W.H. that's \$37.50 over the life of the lamp. Even better, if you run 40 lamps that's a savings of \$1,500.00.

18 bulbs/case

Bulbs are Heavy Duty Industrial type with high brass base and are resistant to urine and water splash damage, so you'll save even more on those costly breakage problems.

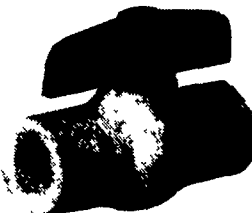
WESTFIELD

TRANSPORT AUGER



GRAIN AUGERS

PLUMBING SUPPLIES Galvanized & PVC



WATER FILTER CARTRIDGES

PVC Ball Valve

HEAT LAMPS



Red or White Available

The Nitrogen level of the pit waste will be enhanced by 300% with

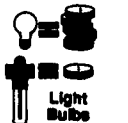
PIT-BOSS™

Pit Additive To Reduce Pit Odor And Pit Solids



U-TUBE LAMP & SUPPLIES

"...the biggest advantage of these lamps is the economic savings over the life of the bulb. Once the initial investment is paid back, which will be done in less than six months, the increased electrical economy makes such bulbs the most logical way to light..." MICHAEL J. Dore PhD Animal Science University of Connecticut

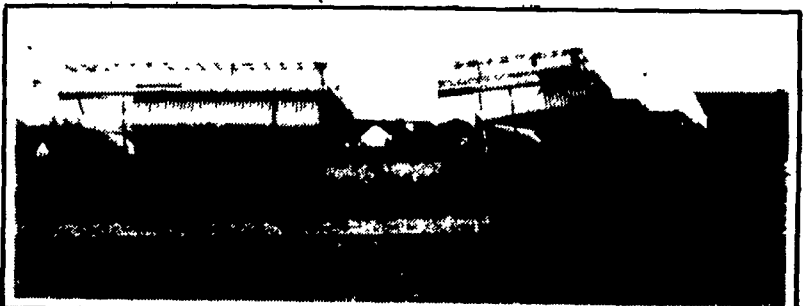


Cost 5 Times More To Operate REPLACEMENT BALLAST U-TUBE



QUALITY BINS

We Assemble, Deliver & Set-Up Bins On Your Farm



Full Line Of Parts In Stock For Your Poultry And Hog Needs

Hours: M-F 7:00-5:00; Sat. 7:30-11:30



Swine & Poultry Systems Specialists
FARMER BOY AG. INC.

410 E. LINCOLN AVE. (RT. 422) MYERSTOWN, PA 17067

PH. 717-866-7565

10-30

Check Our Warehouse Prices

WE SHIP UPS



SEE JAY OR PAUL FOR YOUR

PARTS AND EQUIPMENT NEEDS



JAY ZIMMERMAN — Sales



PAUL HIGH — Sales