

## Leinbach's Shippensburg Produce Auction

(717)532-5511

Shippensburg, PA

Average Prices Of #1 Produce

October 21, 23 and 26

Price Differences are Quality, Size or Days

Open 10 a.m. Tues., Thurs., and Sat. Report Supplied by Auction

APPLES: STAYMAN, GALA AND JONAGOLD 4.00-6.00 1/4 BU., RED AND YELLOW DELICIOUS, YORK AND ROME 2.00-4.00 1/4 BU.

BROCCOLI: 2.00-6.50 1 1/9 BU. CABBAGE: 2.00-4.50 50 LBS., 18-28 HEAD.

CAULIFLOWER: SMALL TO LARGE .50-.85 HEAD.

POTATOES: 5.00-6.50 50 LBS., 3.00-4.00 1/4 BU.

SWEET POTATOES: 2.00-6.50 1/4 BU. RED BEETS: TRIMMED 2.00-6.00 1/4 BU.

SQUASH: ACORN AND BUTTERNUT 1.00-2.00 BU.

TOMATOES: MEDIUM TO LARGE 8.00-15.00 25 LBS., SMALL 3.00-7.50 25 LBS.

TURNIPS: 3.00-6.50 1/4 BU. ORNAMENTALS: GOURDS .50-2.00 1/4 BU., BABY PAMS .10-.40; FACE PUMPKINS SMALL TO LARGE .25-.375 EACH; INDIAN CORN .35-1.75 BUNCH, MINI .05-.35 BUNCH.

PUMPKINS: NECK .10-.75 EACH. MUMS: SMALL TO LARGE .35-1.50 EACH.

STATICE AND DRIED FLOWERS: 1.00-2.25 BUNCH.

SALE DAYS NEXT WEEK ARE TUES., THURS. AND SAT., 10 A.M.

## Philadelphia Potato & Onion

Philadelphia, Pa.

Wednesday, October 27, 1993

ONIONS AND POTATOES ---ONIONS DRY: MARKET ABOUT STEADY. US#1 OR GENERALLY GOOD QUAL AND COND UNLESS OTHERWISE STATED. NEW CROP Yellow Globe Type NY 50 lb sks med 7.00-7.50 mostly 7.00 mstr cntr 20 2-lb mshaks med 8.00 Spanish Hybrid CO 50 lb sks col 11.00-12.00 jbo 9.00-10.00 mostly 10.00 ID/OR 50 lb sks col 11.00 jbo 9.00-10.00 mostly 10.00 White CO 50 lb sks jbo 12.00 Red CO 25 lb sks jbo 10.00 ID/OR 25 lb sks jbo 12.00 NY 25 lb sks jbo 9.00 few 12.00 lge 9.00 med 6.00-7.00 mostly 6.00-6.50 ---POTATOES: MARK-

ET ABOUT STEADY. US#1 SZ A WASHED OR BRUSHED UNLESS OTHERWISE STATED NEW CROP Russet Burbank ID bld 10 5-lb flmbgs non sz A 9.00-9.50 50 lb ctns 70s 17.50-19.00 mostly 17.50-18.00 few 20.00 80s 17.50-19.00 mostly 18.00 few 20.00 90s 14.00-16.00 mostly 14.50-15.00 some 17.00 previous commitments 14.50 100s 11.00-13.00 mostly 12.00-12.50 some 14.00 120s 12.50 140s 12.50 10 oz min fr qual 9.00-9.50 50 lb sks 10 oz min fr qual 10.00 Norkotah CD New Brunswick CDOne 50 lb ctns 70s 12.00 80s 12.00 90s 10.50 100s 9.50 OR 50 lb ctns 70s 12.00 80s 12.00 90s 10.00 100s 9.00 110s 8.50 WA 50 lb ctns 80s 13.00 90s 10.00-11.00 few 11.50 100s 9.00-10.00 120s 10.00 Round Red MN/ND 50 lb sks 9.00-10.00 mostly 9.50 sz B 12.00-13.00 NY 50 lb sks 7.00-8.00 sz B 10.00-11.00 Round White CD Prince Edward Island CDOne 50 lb sks 6.25-7.00 lge 7.00-7.50 mostly 7.25-7.50 NJ 50 lb sks 5.00 NY 50 lb sks 6.00 lge 7.00 112SE JH.

## Kutztown Produce Auction

Fleetwood, PA

Auction days - Tues., Thurs., & Sat., 9:30 a.m.

Oct. 23 thru Oct. 28

Report Supplied by Auction

APPLES: 1.50-7.50 1/4 BU. BROCCOLI: 3.00-9.50 BU. CAULIFLOWER: .45-1.40 HEAD. POTATOES: WHITE 1.50-6.50 50 LBS., RED 2.25-3.25 50 LBS., PUMPKINS: 28.00-55.00 BIN. CHESTNUTS: .20-.65 LB. PUMPKINS: NECK .25-.50 EACH. PEPPERS: 4.00-10.50 BU. RADISHES: 3.00-4.50 1/4 BU. TURNIPS: .75-3.00 1/4 BU., 2.00-4.50 25 LB. BAG. CABBAGE: 2.75-6.50 BAG., .40-.50 HEAD.

AUCTION DAYS ARE TUES. AND SAT., 9:30 A.M. GENERAL CONSIGNMENT AUCTION NOV. 16, AT 10 A.M.

## Eighty-Four Livestock

Eighty-Four, Pa.

Monday, October 25, 1993

Report Supplied by Auction

CATTLE 497. STEERS, SELECT 60.00-65.00; STANDARD 56.00-59.50; UTILITIES 55.50 AND DOWN. HEIFERS: STANDARD 57.00-60.00; UTILITIES 56.50 AND DOWN. COWS: UTILITY AND COMMERCIAL 47.00-52.00; CUTTERS, BONERS

AND UTILITIES 44.00-47.50; CANNERS AND LOW CUTTERS 40.00-43.50; SHELLS 39.00 AND DOWN.

BULLS: #1 58.00-63.50; #2 50.00-57.50.

FEEDER STEERS: 200-300 LBS. 71.00-92.50; 300-500 LBS. 62.00-84.00; 500-800 LBS. 52.50-78.00.

HEIFERS: 200-300 LBS. 72.00-85.00; 300-500 LBS. 60.00-80.00; 500-800 LBS. 51.00-74.00.

BULLS: 200-300 LBS. 74.00-95.00; 300-500 LBS. 58.00-85.00; 500-800 LBS. 50.00-75.00.

CALVES: 178 HEAD. VEALERS CHOICE 89.00-92.50; GOOD 82.00-88.00; STANDARD AND GOOD 65.00-80.00; UTILITIES 62.50 AND DOWN.

FARM CALVES, HOLSTEIN BULLS #1 130.00-160.00; #2 102.50-125.00; BEEF X BULLS 92.50-161.00; HOLSTEINS HEIFERS 90.00-192.50; BEEF X HEIFERS 85.00-145.00.

HOGS: 98 HEAD. #1&2 200-220 LBS. 37.00-46.00; #1&3 220-260 LBS. 43.50-46.50; #2&3 300 LBS. 45.00.

SOWS: UNDER 500 LBS. 32.50-36.50. BOARS: 30.00-31.00.

FEEDER PIGS: #1&3 20-40 LBS. 15.00-27.00 HEAD; 50 LBS. 25.00; #2&3 75-100 LBS. 25.00-39.50 PER HEAD.

SHEEP AND LAMBS: 146 HEAD. HIGH CHOICE AND PRIME 50-75 LBS. 70.50-79.00; CHOICE 75-100 LBS. 61.00-69.00; 125 LBS. 29.00; FEEDER LAMBS GOOD AND CHOICE 60.00-70.50; UTILITIES 52.00 AND DOWN; EWES 25.00-27.50.

GOATS: 23 HEAD. LARGE 31.00-42.00; MEDIUM 20.00-34.00 HEAD.

## Shenandoah Valley Livestock

Harrisonburg, Va.

October 25, 1993

Report supplied by auction

STEERS: M&L-1 300-500 LBS. 91.00-98.00; 500-700 LBS. 76.25-88.50; 700-1000 LBS. 67.00-79.50; HOLSTEINS 300-1000 LBS. 63.50-87.00.

S-L&M&L-2: 300-500 LBS. 82.00-90.00; 500-700 LBS. 74.00-83.00; 700-1000 LBS. 70.50-77.25.

FEEDER BULLS: 300-500 LBS. 84.00-95.50; 500-700 LBS. 70.50-85.00.

S-L&M&L-2: 500-700 LBS. 69.00-79.50.

HEIFERS: 300-500 LBS. 69.00-84.00; 500-700 LBS. 67.50-72.50; 700-1000 LBS. 61.50-79.00.

Lancaster Farming, Saturday, October 30, 1993-A17

S-L&M&L-2: 300-500 LBS. 60.00-75.00; 500-700 LBS. 65.00-66.00.

STOCK COWS: BEEF MEDIUM AND LARGE FRAME 3-6 YRS., WITH CALVES 750.00-900.00 PER PAIR; MEDIUM AND LARGE FRAME 7-8 YRS., WITH CALVES 535.00-875.00 PER PAIR; COWS LARGE AND MEDIUM FRAME 2-8 YRS. 385.00-535.00 PER HEAD; SMALL AND MEDIUM FRAME 8-10 YRS. IN THIS CONDITION 190.00-260.00 PER HEAD. BABY CALVES: 68.00-110.00 PER HEAD.

SLAUGHTER COWS: UTILITY AND COMMERCIAL 2-4 40.50-45.00; CANNERS AND CUTTER 1-3 36.25-41.50.

SLAUGHTER BULLS: 45.00-55.50.

LAMBS: BLUE O HIGH CHOICE AND PRIME 60.25-62.00; RED O CHOICE 66.00; FEEDER LAMBS CHOICE 67.50-72.00; SLAUGHTER EWES 15.00-16.00; HEAD EWES 23.50-24.25.

SOWS 1-3: 31.00-35.00.

BOARS: 29.00.

SLAUGHTER CALVES GOOD AND CHOICE 57.50-66.00.

## Friend's Stockyard Inc.

Accident, Md. 21520

Report Supplied by Auction

October 25, 1993

STOCK BULLS AND STEERS (200-500 LBS.) 75.00-106.00.

STOCK HEIFERS 65.00-86.00.

SLAUGHTER STEERS GOOD TO CHOICE 67.00-71.75; MEDIUM TO GOOD 60.00-66.50; HEAVY CHOICE OVER 1450 LBS. 63.00-66.50.

HOLSTEIN STEERS HEAVY 50.00-57.00; LIGHT 48.50-56.00.

SLAUGHTER HEIFERS GOOD TO CHOICE 64.00-68.00; MEDIUM TO GOOD 56.00-62.50.

BULLS HEAVY 52.00-62.25, LIGHT 50.00-57.00.

COWS FEW HIGH DRESSING 47.00-52.50; UTILITY HOLSTEIN 44.00-50.50, CANNERS 38.00-46.00, COMMERCIAL TO GOOD 40.00-45.50, CULL COWS 39.00 AND DOWN.

VEALS GOOD TO CHOICE 70.00-92.50, MEDIUM TO GOOD 50.00-69.00.

BOB CALVES 50.00 AND DOWN.

HOLSTEIN BULL CALVES, RETURN

TO FARM (90-120 LBS.) 115.00-161.00.

HOLSTEIN HEIFER CALVES, RETURN TO FARM (100-120 LBS.) 150.00-190.00.

BEEF X CALVES, RETURN TO FARM, UP TO 160.00.

HOGS: TOP QUALITY 45.00-48.00, HEAVY 44.50-46.00, LIGHT 37.00-43.50.

SOWS 32.00-37.75.

MALE HOGS: 25.00-32.00.

LAMBS: 60.00-68.00.

FEEDER LAMBS: 55.00-70.00.

SHEEP: 10.00-28.00.

LIVESTOCK PRICES ARE ALL GIVEN PER HUNDREDWEIGHT!

## Belleville Livestock Auction

Belleville, Pa.

Wednesday, October 27, 1993

Report Supplied by Auction

CATTLE 205.. Supplied by the auction. STEERS: Select 63.00-65.25. HEIFERS: Select Holsteins 52.00-56.00. COWS: Breaking Utility and Commercial 46.00-48.85, one at 50.60, Cutter and Bon-

ing Utility 43.00-47.10, Canner and low Cutter 41.00-43.50. Shells down to 32.00.

BULLS: Yield Grade No. 2 Holsteins 51.00-53.85. FEEDER CATTLE: Steers: 55.00-70.50; Bulls: 45.50-60.00; Heifers: 52.00-64.00.

CALVES 138..VEALERS: Standard and Good 60.00-90.00. FARM CALVES: No. 1 Holstein bulls 120.00-160.00, No. 2 80.00-130.00.

HOGS 113..BARROWS AND GILTS: US 1-2 46.00-47.75, 1-3 44.00-45.85, 2-3 40.00-43.50. SOWS: US 1-3 37.50-39.00.

FEEDER PIGS 289..US No. 1-3 20/30 lbs. 15.00-21.00, 30/40 lbs. 22.00-30.00, 40 lbs. and up 30.00-40.00. --- all per head.

SHEEP 22..Choice Woolled al. lambs 55.00-67.00. Slaughter sheep: 27.00-38.00.

GOATS 12..Large 50.00-90.00, Small 50.00-45.00, Kids 25.00-35.00, per head.



RD 4, Box 4153-A, Fleetwood, PA 19522  
215-683-7161  
AH-00073-L

## CHRISTMAS TREE & GREENS AUCTION

TUESDAYS, NOV. 23, 30 & DEC. 7, 14 AT 11:00 A.M.

CHRISTMAS TREES: Douglas Fir, Blue Spruce, White Pine, Scotch Pine, White Spruce & More. Trees will be potted & cut.

WREATHS & DECORATIVE LOGS: Plain or Decorated, Bunches of Greens, Swags, Holly & More.

MISCELLANEOUS: Wicker Baskets, Colored Twigs, Bows, Pine Cones, Etc.

We have a good supply of product for these auctions, and all consignors are welcome. Please call for more information.

Directions: from Reading 222 N. to Kutztown Exit bear right, then right onto Oakhaven Road to stop, then left. From Allentown 222 S. to Virglnville exit, turn left to stop, then right, then second left onto Oakhaven Road, to stop then left.

## CONSIGNMENT AUCTIONS, FARM EQUIPMENT & MISCELLANEOUS ITEMS

TUESDAY, NOV. 16th at 10:00 AM

Accepting Consignments Until 4:00 PM

Monday, Nov. 15th

## SURPLUS SUPPLY AUCTION

TUESDAY, DEC. 14th At 11:00 AM

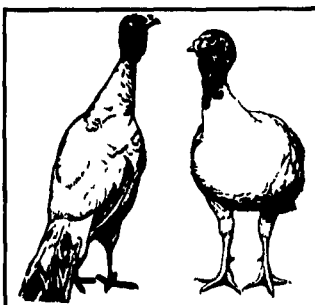
Suprlus Hardware Items, Lumber, and Other New Surplus Items from area stores. Watch later for partial listing. Please call to register your consignments.

## WINTER CRAFT AUCTION

SATURDAY, DEC. 4th at 11:00 AM

Wooden Toys, Paintings, Quilts, Baby Blankets, Wreaths, Christmas Items & More. Consignors Needed.

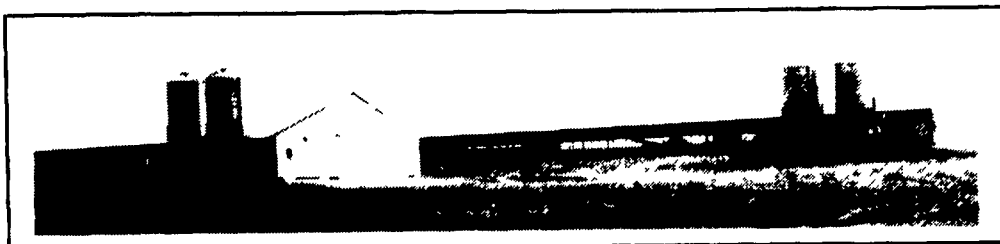
## ADD INCOME TO YOUR FARM



## CONTACT FARMER BOY AG... YOUR PROFESSIONAL COMPANY

- Custom Design
- Assistance In Planning Your Financing
- Securing Building Permits And Information Requirements
- Nutrient Management Planning
- Secure Grower Contracts

This 2-stage facility features a 50'x 215' brooder building and a 50'x 520' growout building designed for 8,000 Toms.



ROUND HILL

## TURKEY CONTRACTS AVAILABLE

- \* INCREASE CURRENT CASH FLOW
- \* COMPLEMENT EXISTING FARM OPERATIONS
- \* TAKE RISKS OUT OF CHANGING MARKET PRICES

- \* RENOVATING EXISTING POULTRY HOUSING



ROUND HILL FOODS OF NEW OXFORD, PA, A DIVISION OF WAMPLER-LONGACRE TURKEY, INC. IS EXPANDING ITS GROWING OPERATIONS IN SOUTH CENTRAL PA AND NORTH-ERN MD.

IF YOU ARE INTERESTED IN BECOMING A CONTRACT HEN OR TOM TURKEY GROWER WITH THE SECOND LARGEST TURKEY PRODUCER IN THE U.S., PLEASE CALL JOHN MENGES.

At (717) 624-2191, EXTENSION 242, TODAY!

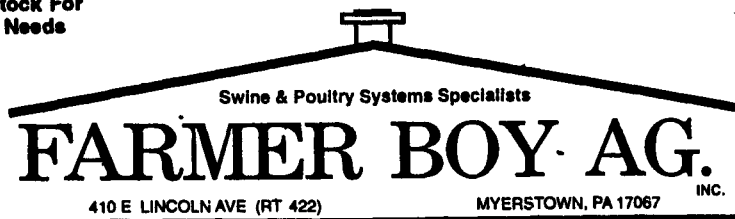
WITH FARMER BOY AG YOUR BUILDING EXPERIENCE WILL BE SUCCESSFUL!

Full Line Of Parts In Stock For Your Poultry And Hog Needs

Hours: M-F 7:00-5:00; Sat. 7:30-11:30



24 Hour Service



PH. 717-866-7565

10-30

Check Our Warehouse Prices

WE SHIP UPS

