



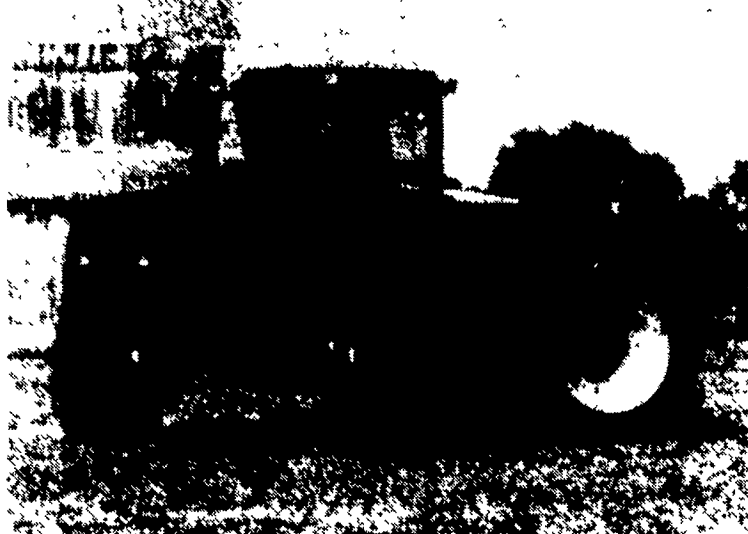
# Business News

## Case Delivers Year-Round 4WD Tractor

RACINE, Wis. — J I Case recently began production of its largest tractor capable of 30-inch row-crop work. Equipped with an optional steerable front axle, the 300-horsepower Case International 9250 can negotiate turns within a radius as tight as 12.2 feet.

"This option makes the 9250 a year-round tractor, efficient for row-crop as well as tillage work," said Kelly Kravig, Case product manager, four-wheel-drive tractors. "In combination with the 9250's articulated design, the steerable front axle gives the machine unprecedented maneuverability with the stability of a large tractor. Operators have found they can even make in-row corrections without tail wag."

The 9250 Row-Crop Special incorporates the same state-of-the-art technology as the standard 9250. This includes a 12-speed, full powershift transmission with Case-exclusive Skip-Shift™ shifting which takes the tractor from first to eighth gear in just three seconds for more accurate chemical application and safer transport-



This 300-horsepower Case International articulated four-wheel-drive tractor has a turning radius of just 12.2 feet and is capable of 30-inch row-crop work.

ing. Pressure-flow-compensated hydraulics, another feature pioneered on Case International tractors, provide flow to the four standard remotes to ensure the right amount of pressure and flow without wasted horsepower.

In addition, the cab features ex-

ceptional visibility, low-effort controls and a fully adjustable air-ride seat like other Case International four-wheel-drive articulated tractors.

"By combining the best of existing technologies with the advantages gained in this design, we're providing customers with greater flexibility and enhanced value. This is a clear demonstration of the kind of leadership through technology they expect from Case," said Kravig.



Jay Rush and Cheryl Cook approve York Farm Credit under the Certified Lender Program.

## York Farm Credit Approved Under Lender Program

YORK (York Co.) — York Farm Credit, ACA has been approved by the Farmers Home Administration (FmHA) under the Certified Lender Program to process loans guaranteed by FmHA.

Cheryl Cook, FmHA state administrator, and Jay Rush, York Farm Credit president, recently executed the agreement signifying the approval at the York Farm Credit headquarters.

Cook said that she and the Harrisburg office staff were pleased to see the continued interest by York Farm Credit in the utilization of the guarantee programs for agricultural lending in south central Pennsylvania. Rush expressed his satisfaction with the utilization of current FmHA guaranteed programs and his expectation that the Certified Lender Program would improve and streamline the process for not only FmHA and Farm Credit but also for the primary benefactor, the farmer.

Cook and Rush shared their belief that the Certified Lender Program would improve the avail-

ability of credit for young farmers as well as for farmers who for one reason or another are in financial situations that represent more than normal risk for normal commercial credit standards.

## Hoffman Seeds Offers Savings

LANDISVILLE (Lancaster Co.) — Hoffman Seeds offers farmers a wheat Profit Pak™. Each Pak contains 54 units of a single Hoffman wheat variety, while offering farmers up to \$60 in savings.

Farmers can select their Pak from among four varieties — Hoffman 89 Brand, Hoffman 28 Brand, Hoffman 45 Brand, and Hoffman 21 Brand.

• Hoffman 89 offers a package of yield and test weight. In three-year trials conducted by Penn State and the University of Maryland, it produced yield and test weight advantages of up to 5 per-

cent over competitive varieties. And its test weights were better than 58 pounds/bushel every time. Hoffman 89 also delivers a broad spectrum of disease tolerance including leaf rust, soil borne mosaic, and septoria.

• Hoffman 28 is a soft red wheat providing maximum straw production. It topped 1990 University of Delaware trials for straw yields at 3.1 tons/acre. Hoffman 28 can be used in place of rye for growers wanting silage with a later maturity.

• Hoffman 45 is a fully awned variety featuring high test weights. A medium maturity vari-



Massey Ferguson 8570 rotary combine features new 240 HP Cummins 8.3 liter "C" series diesel engine with Power Boost to 250 HP to maintain maximum combine performance in tough harvest conditions and unloading on-the-go.

## Rotary Combine Includes 'Power Boost' Engine

NORCROSS, Ga. — New 1993 production MF 8570 rotary combines feature a Cummins 8.3 liter "C" Series diesel engine rated at 240 HP at 2200 RPM with Power Boost to 250 HP at 2000 RPM.

This helps maintain maximum combine performance in the toughest harvesting conditions and when unloading on-the-go.

The new Cummins engine is designed to be more fuel efficient, produce greater horsepower, and operate at a lower noise level than the previous engine.

Features include:

• New rotor drive. 1993 production MF 8570 corn/soybean and rice rotary combines are equipped with a high torque rotor drive that provides a 17-percent increase in torque capability for tough, green straw harvest conditions.

• New grain sample inspection opening. Now it's easy to take clean grain samples while harvesting. A clean grain sampling chute from the discharge auger to an opening in the front left-hand cor-

ner of the grain tank allows the operator easy access to a grain sample.

• New longer unloader auger. A new unloading auger is also standard equipment and provides a 21-foot reach from the center of the combine to the discharge point with the "scoop" style unloader boot installed. This will permit on-the-go unloading with 5-foot clearance from the end of a 30-foot grain table.

• New passenger seat. A passenger seat, located to the left of the operator's seat, will be standard equipment on 1993 models. This padded seat hinges to provide access to a large storage box.

Many other new standard features include a straw chopper with two spreader board positions, a newly designed, easy to operate stone trap lever, and a set of three concave blanks. An optional separator hourmeter is available for tracking separator hours recorded on the standard base equipment hourmeter.

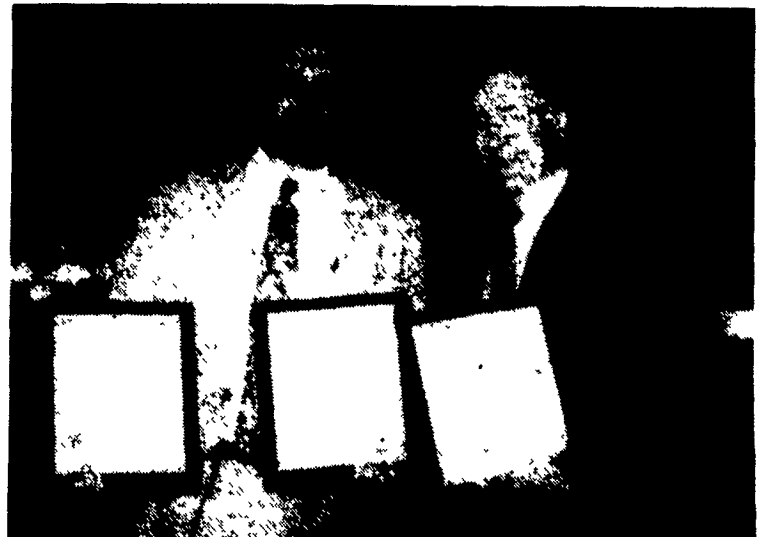
## Alderfer Auction Wins Ad Contest

OVERLAND PARK, Kan. — National Auctioneers Association (NAA) has announced the winners of its 1993 advertising contest.

NAA members from across the country sent in more than 500 advertisements, brochures, radio and TV commercials and audio-visual presentations.

Sanford Alderfer Auction Company of Hatfield, Pa. received awards in three categories: real estate brochure, general household and estate liquidation brochure, and best auction business newsletter.

Judges had a tough time selecting winners in several of the categories because of the number of outstanding entries submitted. The contest was judged by a panel



Alderfer Auction Company was recently honored with several awards by the National Auctioneers Association. From left, Sandy Alderfer, president, Sanford Alderfer Companies, and Eddie Haynes, CAI past president.

of media professionals from the Kansas City, Mo., area, where NAA is located.

accept the awards. The awards banquet was held in conjunction with the convention.

Sandy Alderfer, president of Sanford Alderfer Auction Company, attended the NAA awards banquet in Denver, Colo., the site of the 1993 NAA Convention, to

ety, it tolerates high nitrogen rates and is recommended for areas where poultry manure has caused lodging problems.

• New for the fall of 1993, Hoffman 21 yields especially well in Virginia and Delmarva. A medium variety with medium short plant height, it is an excellent variety when followed by double crop soybeans.

