

low Signs. Owners, Ira R. & Miriam A. Lehman. Melvin Haines & Ralph Brehnenman, Aucts.

hold Goods, Car, Travel Trailer. Located At 614 Fivepointville Rd., Brecknock Township, Lancaster Co., Pa. Terms By, Mary A. Frymyer Estate. Horst Aucts.

Public Auction Register

Closing Date Monday 5:00 P.M. of each week's publication

SAT. NOV. 20 - 9AM, 350 M/L Milk Bottles, Fisher Price Toys, 4 Pedal Cars, 3 Pedal Tractors, Skillets, Winross Trucks, Toys, Cast Iron Pcs., Hubley Cars. Located At Farmersville Fire Hall, Farmersville, Pa., Lanc. Co., 2 1/2 Miles Off Rt 322 At Martins Bike Shop Turn On Farmersville Rd. In Hinkletown Follow Farmersville Rd To Sale Watch For Signs Snyders Auction Service, agent for owners. Sale conducted by Snyders Auction Service, aucts

Southern York Co., Pa From Rt 124 (E Prospect Rd.) Take Manor Rd. ±0.9 Mi. To Sale Or From Windsor Rd Take Manor Rd North @3 Mi. To Sale Fol-

SAT. NOV. 20 - 9AM Farm equip., household goods, antiques, tools from Blue Ball take Rt. 23 East 2 1/2 miles to 1636 Main St., Goodville, Lanc Co. Auction by Phares & Vera Newswanger, Aaron E Martin, auct.

SAT. NOV. 20 - 9AM, Perma Stone Dwelling, Real Estate, Antiques & House-

Green Dragon Livestock Sales

Located 1 Mi. N. On North State St., Ephrata

Sale Every Friday

11:00 A.M. Beef

7:00 P.M. Small Animal Sale.

200-300 Stocker & Feeders Every Friday. Regular Shippers Of Northern Cattle.

WALTER H. RISSER,

Prop.

Home 717-838-4318

Office 717-733-2444

SAT. NOV. 20 - 9AM, Real Estate, Household Goods, Antiques, Shop Tools, Inventory Located In The Village of Smoketown Along Route 896, Just Off Route 340, Lanc Co., Pa Owner, Andrew E & Annie Beiler Petersheim Auct

SAT NOV 20 - 9AM, Valuable Tractors, Farm Equip, Vehicles, Riding Mower, Antiques, House Items, Tools, Misc. Located

CONSIGNMENT HORSE SALE

SPECIAL DRAFT HORSES & MULES
WELL MATCHED TEAMS
LOADS OF STANDARD BRED DRIVING HORSES

Also

RIDING & SLAUGHTER HORSES

SATURDAY, OCTOBER 30, 1993

10:00 A.M. Sharp

Tack To Be Sold At 8:30 A.M.

Keister's Middleburg Auction Sales, Inc. Rt. 555 3 miles East of Middleburg, Pa. 5 miles west of Sellinsgrove, Pa.

For information call: 717-922-1490 or 717-837-2222 or 717-523-0360

Keister's Middleburg Auction Sales, Inc. Rt. 522 R.D. 3 Middleburg, PA

Owners,
DON & WALT KEISTER

Ray Long & Dave Imes, Auctioneers

Terms: Cash

Trucking Available

Restaurant Open



DAIRY CATTLE AUCTION

TUESDAY MORNING 11:30 A.M.
OCTOBER 26, 1993

At Shady Lane Dairy Sales Inc., 1/4 Mile West of Quarryville, Off Rt. 372 on to Oak Bottom Road.

TWO COMPLETE HERD DISPERSALS
- 175 HEAD OF REGISTERED AND HIGH GRADE HOLSTEINS -

Herd 1 - A complete herd of 100 head of mature cows and heifers of all ages. Many years of identified sired Atlantic breeding. This herd is very strong in base milk. Heifers are very well grown. Dispersing due to moving, a herd worth your attention.

Herd 2 - From Paul Rawlings, approximately 20 head of cows, with one half springing. Nice clean cows, selling due to discontinuing dairy operations.

"Also Selling The Same Day"

—65 Head Of Top Open And Short Bred Heifers—
"Selling First In Sale Order, 50 From One Herd (Calves To Short Bred) And 15 From Another Herd"

10 Head of fresh and close cows from one Md. Herd
50 Head of close and fresh cows from farm dispersals
Some good Red and White Holsteins

2 Good stock bulls, ready for heavy service.

Sale Managed by:

Shady Lane Dairy Sales Inc.
23 Shady Lane, P.O. Box 673
Quarryville, Pa. 17566-0673

Glenn D Fite
717-786-2750

Fax 717-786-3250

David L Fite
717-786-1725

"Six Generations of Sales and Service"

We now have a good Bradford County herd available for private treaty. 20 head recently fresh, 8 springing with balance in all stages. Averaging 50 lbs. per cow.

Dairy and Livestock Sales

100 HEAD MISS-BELLEVUE HOLSTEINS QUALITY

COMPLETE DISPERSAL

FRIDAY, OCTOBER 29, * 11 A.M.

BELLEVILLE, PA.

Herd Average 20,483 Milk 3.5% 721 Fat 3.2% 653 Protein

A complete dispersal of high quality registered & grade Holsteins! Records exceeding 30,000 lbs. milk & 1000 lbs. fat! Many sell fresh or springing! Quality milk herd! Many sell milking between 70 & 110 Lbs!

** 40 Head sell that have either produced 25,000 lbs. milk or are from 25,000 lb. dams or higher! Bred for production!

A FEW THAT SELL

- * A beautiful GP-84 Steady dtr. sells with 3-00 365D 30,090M 4.1% 1219F 3.3% 1001P! Also selling her dtr. by Bell Rex due in March to Blackstar! Her Blackstar dtr. born 3/93 also sells!
- * From the same family as the great Steady above an excellent Frosty dtr. sells milking 106 lbs.! Her last record was 4-03 365D 31,200M 3.1% 959F 3.1% 959P! Her dtr. by Symbol sells due after sale to Broker & Finishing with 25,000M 4.0% 1000F! Tremendous family!
- * A Thor sells finishing with 20,000M at 2 yrs. & carrying a Blackstar Embryo from a VG-87 Valiant Don dam with 4-10 365D 27,280M 4.2% 1135F 3.3% 890P! Next dam is VG-87-GDM-DOM with 29,960M 4.0% 1210F 3.4% 1004P!
- * A McNeilly Valiant dtr. sells due 12/93 to Belltone from a VG-87 dam with 30,170M 3.1% 927F!
- * VG-87 Columbus with 28,030M 856F sells & rest of family including her GP-84 fresh Steady dtr. with 3-07 360D 22,800M 4.0% 923F & the Steadys Tesk dtr. born 8/31/93! A Chief Mark yearling dtr. sells from the Steady as well as a springing Michael with 1-10 330D 18,959M 3.6% 684F!

* A Fancy Aerostar dtr. sells from a dam with 27,900M 871F & grdam with 26,490M 990F! She is carrying a Blackstar Embryo from the VG-87 Valiant Don with 1135F!

* VG85 Cleitus dtr. sells with 3-00 365D 26,800M 4.1% 1095F 3.2% 866P springing to Royal! Dam is VG-87 with 27,280M 4.2% 1135F!

** The youngstock look tremendous! Heifer pens are filled with Preludes! Blackstars! Mark Cinders! Lincolns! Marks! Wisters! Clydes!

* Cattle are tested for immediate interstate shipment & inoculated against shipping fever. * Long distance trucks available * Lunch Available.

Directions: From Rt. 322 get off at Belleville Exit & Take Rt. 655 South to first farm on left past Locust Grove Mennonite Church. Coming from Rt. 22 pick up Rt. 655 in Mill Creek & head North. Farm is approx. 15 miles on right. Feel free to inspect the herd at anytime!!

The CATTLE EXCHANGE

Dave Rama RD 2 Box 79 Delhi, NY 13753
Ph 607/746-2226 Fax 607/746-2911

Owner: LOUIS S. YODER

Box 376, RD 1
Belleville, Pa 17004
717-935-2674

Jeff Miller • Wayne Miller & Sons

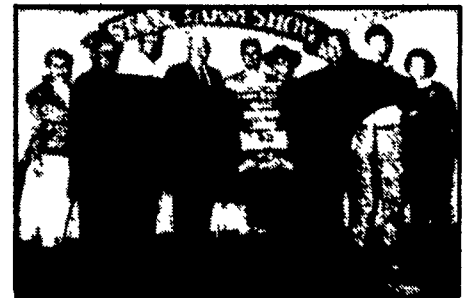
CLUB CALF SALE

Saturday • November 6 • 7:00 P.M.

Selling 40 thick cross bred steers; Calves born March, April, May & June; Sires Represented: Zapper, Akeem, Sweet Willie, Pistol Pete, KK New Design



1992 PA Farm Show
Grand Champion Steer



1993 PA Farm Show
Grand Champion Steer



LOT 317
Zapper/Maine



LOT 413
Akeem/Chi x Angus

These Future Champions Will Sell.

The 1992 calving season at the Miller Farm was an exciting one. The number of exceptionally good calves was overwhelming. But we decided that wasn't enough. We wanted to improve the quality from top to bottom. After making several contacts and telephone calls, we headed west. After traveling several thousand miles and picking only the top calves from herds in Iowa, Illinois, Nebraska and Colorado, we came home with truly an exceptional group of calves. These calves will be all you ever expected in Western bred club calves. Along with our truly deep set of home bred calves, they will be worth your time to inspect. Over 20 Grand or Reserve Grand Steers were sold through this sale last year. These cattle will be wormed, vaccinated, pre-conditioned, and halter broke.

FLASH — The 1993 Grand Champion Steer of Keystone Livestock Show was purchased through this sale last year

SALE LOCATION

MARLEE FARM SALE PAVILION, DR. LEE MILLER, WOODSBORO, MD

Food Available • Sale Day Phone: 301-898-7272

For Information Contact: Jeff Miller

Wayne Miller

Rt. 1, Box 326, Cutler, IN

Rt. 1, Frankfort, IN

Auctioneer: Harry Bachman Ph. 317-268-2409

Ph. 317-258-3492