

PUBLIC AUCTION

SATURDAY, OCTOBER 30, 1993

9:00 A.M.

BUILDING AND CONSTRUCTION SUPPLIES

PENNS CREEK OUTLET WILL OFFER AN INVENTORY REDUCTION AUCTION AT THEIR BUSINESS LOCATION, TROXELVILLE ROAD, PENNS CREEK, PA.

DIRECTIONS: From Harrisburg Travel North on Rts. 11 & 15. Just North of Liverpool, Turn Left on Rt. 104. Continue on 104 through Middleburg. Travel on to Penns Creek. At Edge of Town Turn Left onto Troxelville Road. Auction on left.

BUILDING MATERIALS

Skid of Paneling; Pre Finished Drywall; 125 + Windows-Anderson, Malta and Weather Seal; Storm Windows & Doors; Patio Door; Good Selection of Interior & Exterior Doors- Both Wood & Steel; Bi-Fold Doors; Door Hardware; Thresholds; Jambs; Panic Hardware; Closers; Vinyl Siding & Accessories; Boxes & Boxes of Strap and Tee Hinges; Stationary Glass Door Panels; Screens; Whirlpool Tubs; Tub/ Shower Units; Shower Stalls; Kohler Cast Tubs; Soaking Tubs; Tub and Shower Faucets; Vanities; Cabinets; Cultured Marble Sink Tops and Counter Tops; Cabinet Hardware; Medicine Cabinets; Cast Kitchen Sinks; Drop in Sinks; S S Sinks; Shutters; Toilet Tanks; Drapery Rods; Wood Moulding; Formica; Linoleum; Phylon; Heat Registers; S.S. Stove Pipe; Range Hoods; Self Brackets & Track; Squirrel Cage Blowers; Vacuum Pump for Servicing Appliances; Ridge Vent; Spouting Parts; Nuts & Bolts & Hardware; Glass Building Blocks; Fire & Insulation Bricks; Window Well; Lighting & Light Fixtures; Used Track Lights; Bar Lights; Roof Coating; and Much, Much More...

Refrigerator; Formica Conference Table 44"x95", Fainting Type Couch w/Hinged Ends; Queen Size Head Board- Like New Decorated; Several Single and Double Headboards; Wooden Wheel Barrow; Large Triple Oak Grained Mirror; Several Small Mirrors; Tile Top Tea Table; Lightning Guider Sled; Sand Stone Grinding Wheel; Large Selection of Misc. Items.

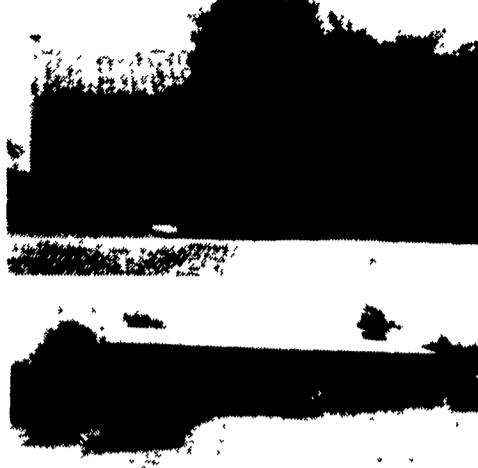
OWNER:

PENNS CREEK OUTLET

KENNETH E. HASSINGER
McClure, PA 17841
(717) 658-3536
AU-001532-L

NEIL A. COURTNEY
Richfield, PA 17086
(717) 539-8791
AU-002651-L

SHORT NOTICE PUBLIC AUCTION VALUABLE REAL ESTATE DWELLING - LARGE SHOP - BARN - GARAGE (6.8 Acres) TUES., NOV. 23 2 P.M.



LOCATION: 935 Beam Rd., Brecknock Twp., Lancaster Co. From Rt. 272 or from Terre Hill take Rt. 897 to Fivepointville East onto Fivepointville Rd. 1/2 mile to Beam Rd. turn left to auction on left. For brochure, deed plotting, terms, and details, call Auctioneers.

Terms By:

**WILLIAM R. &
GLORIA F. COOLEY**
#814-398-2085 or
(215) 445-7549

Auction Conducted By:
**Randal V. Kline, Lloyd Kreider
Roy Good, Jr. Auctioneers**
#717-733-1006
Lic. #499L



Public Auction Register

Closing Date Monday 5:00 P.M.
of each week's publication

SAT. OCT. 23 - 8:30AM,
3rd Annual Cochranville
Community Auction
Located At The Cochranville
Fire Company, Route 10,
1/4 Mile South Of Intersec-

tion Of Route 41 & Route
10, Cochranville, Pa
Hosted By Well-Known
Local Auctioneers

SAT. OCT. 23 - 8:30AM,
Sawmill Equipment & Lum-

PUBLIC AUCTION



**FORD 8N & FARMALL H
TRACTORS, 1 HORSE
SLEIGH & BUGGY, FARM
EQUIPMENT**

Mon., Oct. 25 at 11 A.M.

Located 2 1/2 mi. N. Of I-78 & Fogelsville,
Turn W. Off Rt. 100 Onto Claussville Rd.
1/2 Mi. To Auction On Left. Weisenberg
Twp., Lehigh Co., Pa.

Ford 8 N Tractor; Farmall H Tractor w/Cult.;
Ford 2 R 3 Pt. Culti; 3 Pt. Saw Buck; Ferg. 3
Pt. Hay Rake; NI Hay Crusher; NH 77 Baler
w/Eng.; Little Giant 24' Bale & Grain Elev.; 4
Whl Farm Wagon; (3) Ontario Grain Drills (2
For Parts); 3 Pt-4 R Weeder; 3 Sect. Harrow;
Drag Disc; NI Spreader For Parts; 6' & 7 1/2'
Front End Blades; Fuel Tank w/Pump; Cattle
Gate; Wire Fencing; 4' Ci Trough; (70)
Cement Blocks; Puch Motor Bike; Platform
Scale; Rubbertire Wheelbarrow; Beam Scale;
Craftsman 16 HP Riding Mower w/Snow
Blower; Power Reel Mower; Push Mowers;
Set Of Used Kit Cabinets; 94"x54" Picture
Window; PVC Drain Pipe; 1 Horse Open Bug-
gy; 1 Horse Sleigh; Horse Harness Pcs.; 1
Hole Corn Sheller; Wdn Whl Barrow; Port Air
Comp; Rockwell Delta Bandsaw; Banding
Mach; Plus Many Other Items.

Terms: Cash Or Check

Ordered By:

MONICA FENSTERMAKER
Refreshments Available

PO Box 215 • Fogelsville PA 18051 • 215 395 8084 • License #AU001809 L
WATSON BATTLEMOYER AUCTIONEERS INC

ber, Guns, Tools & Hard-
wares. Located At 7040
Bates Drive, Annville, From
Annville Take #934 North
To Left On Palmyra To Gel-
grove Road To "T" Turn
Right Onto

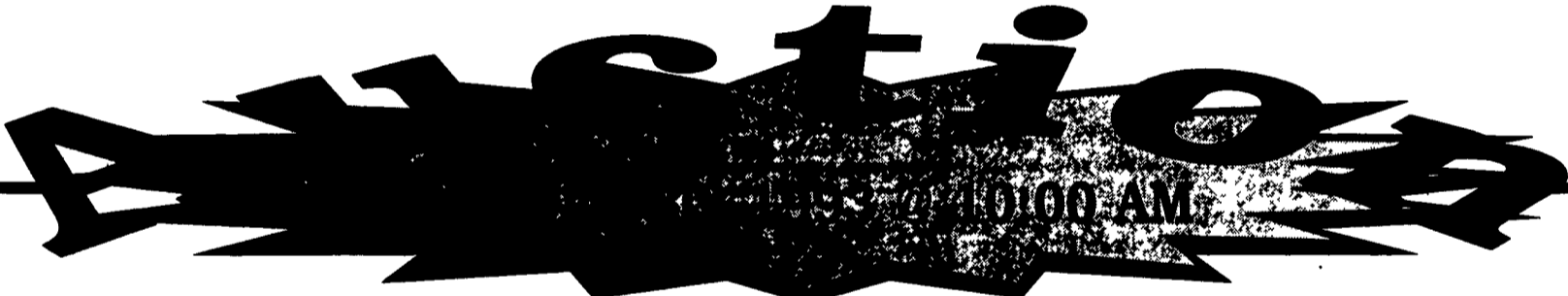
SAT. OCT. 23 - 8:30AM
Tractors, farm equip,
horse-drawn equip, col-
lectables, misc. York Co,
Pa Take Rt. 30 to rt. 616,
Take Rt. 616 S ± 3.3 mi. to
sauqre to York New Salem.
Turn R onto Stoverstown
Rd. & go W ± 5 mi. to sale
OR from Rt. 516 take
Stoverstown Rd E ± 0.4 mi
to sale. Raymond Schrum,
owner. Melvin Haines,
Ralph Brenneman, aucts

SAT. OCT. 23 - 9AM,
Ewing Construction Selling
Trucks, Backhoe, Con-
struction Equipment & Sup-
plies. Located From Harris-
burg Travel North On
Routes 11 & 15 Through
Selinsgrove At Gary's
Farm House Restaurant
Turn Right Auction Imme-
diately On The Left. Owner,
Elder C. Ewing Kenneth E.
Hassinger & Neil A. Cour-
tney, Aucts.

SAT. OCT. 23 - 9AM,
Household Items & Collect-
ables, Tools & Tractors,
Real Estate. Located On
The Creek Road, Between
Coburn & Spring Mills At
Zerby Gap Attorney For
Estate, James N. Bryant
Leon J. Smith Jr., James T.
Smith, Aucts.

SAT. OCT. 23 - 9AM, Fur-
niture, Quilts, Glassware &
Tools Located 2 East Lin-
den Street, Richland, Pa
Harold K Keller & Adam
Heisey, Jr, Aucts

SAT. OCT. 23 - 9AM,
Tools, Lawn Care Equip-
ment & Shrubbery. Located
From I78 - Exit At Frystown
Rt. 645 - North .2 Mile - Left
Onto Daub Rd - 1/2 Mile To
Auction Site On Right At
211 Daub Road Auction
By, Ray H. Boltz. Bach-
man, Aucf



We've run out of room but not equipment. 1993 has been a record year for Anderson Tractor so we need to sell some of the old used equip. & make room for the new. All equipment was traded in WAS NOT BOUGHT. This is the biggest selection of TOP NOTCH equipment ever offered at one time. Partial Listing

John Deere

- 870
- 40
- 70
- 720
- 2-2040
- 2150 w/loader
- 2155
- 2240 w/loader
- 2-2440
- 2550
- 2-2640

- 2555 4x4 w/loader
- 2750 Tobb
- 2755 Tobb
- 3010
- 3020 w/loader
- 5-4020
- 4000
- 4320 w/cab
- 4040
- 5020 w/cab
- 8630 4x4
- D

480 Forklift

- Massey Ferguson
- 35
- 65
- 2-165
- 235
- 275
- 375 4x4 w/loader
- 3060 Cab 4x4 w/loader
- 3070 Cab 4x4 w/loader
- 2675 MF w/cab

Ford

- 8N
- 2000
- 2120 4x4
- 3000 w/loader
- 4000 w/loader
- 8700 w/cab
- 9000 w/duals
- IH
- 140 w/Equip
- 230 w/Cultu
- 384
- 544

986 w/cab

- Case
- 885
- 2090 w/cab
- Other
- 550 Long
- Mass Harris #44
- Hesston 140-90 Cab 4x4
- White 150 w/cab
- R30 Ditch Witch w/hoe
- 910 Long

Mower Conditioners

- JD 1209
- JD 1219
- 3-Vicon's
- 2-NH 472
- NH 479
- NH 489
- 2-11+ 990

Forage Harvestors

- 5 JD 3960
- JD 3970
- JD 3800
- NH 718
- NH 818
- Many 2+3 Row JD & NH
- Pickup & Direct Heads

Combines

- NI Super Sheller
- Gleaner E III w/2 heads
- JD 95 2 Heads
- IH Selfpropelled 2 heads
- JD 3300 1 head
- 2-4400 w/heads
- JD 660 Side hill w/Flex Head
- JD 443 head

Round Balers

- 2-510JD
- 3-850.NH
- 851 NH
- 847 NH
- 1850 Gehl
- 2-Hesston 5500
- 530 JD

Square Balers

- 2-336 w/kicker
- JD 327 w/kicker
- JD 346
- Ford
- NH 268
- NH 315
- NH 68
- MF 124 w/thrown
- JD 14T
- Harrows
- JD 210 13'
- JD 310 13'
- JD TW 12'
- JD TWA 12'
- JD RW 11'

JD 235 Fold 18'

- Many More
- Plows
- 2-JD 4200 4 Bott Roll
- JD 4600 5 Bott Roll
- JD 845 3 Bott Roll
- JD 900 & 910 V Rippers
- 3 Chisel Plows
- Many 2-3-4-5 Bottom Plows
- Miscellaneous Equip
- Befco & Niemeyer Power Harrow
- Dup/Wheels
- Irrigation Pump & Pipe
- Hay Loader
- 2-3pt Backhoes
- Blades Ft & Rem
- JD A20 Cultivators

2-Post Drivers

- Grain Drills
- 3-Hay Rakes
- 2 Axle Trailer
- Chipper
- NH 353 Grinder Mix
- Bobcat 732 Skid Steer
- NH 445 Skid Steer
- Forks
- 3 pt Mowers
- Finishing Mowers
- Stoll Tedder Rake
- 14' Tedder
- Tillers
- Spreaders
- Corn Planters
- AC 6 Row

JD 7000 6 rows

- JD 7000 8 rows
- 6-JD 71 Flex 4 rows
- 2-JD 80 Planters
- MF 640 Air Planters
- Many 2 Rows
- Trucks
- R model Mack Tandem
- Ford Rollback 2 ton
- AMT-600

- 6 - Riding Mowers
- JD - IH Simp MF

All items subject to be sold before Auction and more will be added
DIRECTIONS: 3 miles south of Rocky Mount, Virginia on U.S. Route 220

-TERMS: Cash or Good Check
FOOD AVAILABLE ON GROUNDS

**John Deere Financing
Available Ask for details
by October 29, 1993**

**FINANCED BY:
ANDERSON AUCTION SERVICE**

**Anderson Tractor &
Equipment is your full line
John Deere Dealer - Be sure
and Call For any Equipment
needs New or Used**

