

## Lancaster Society 1

The Lancaster County Society of Farm Women No. 1 met in the home of Edna Shearer with Julia Zahn co-hostess for their October meeting.

Amy Brubaker led devotions by reading "Joy," with Scriptural references from the books of John, Phillipians, and Nehemia.

Roll call by Harriet Fasnacht consisted of each member giving some advice on how to save money. Fifteen members and two gave suggestions.

During committee reports, Margaret Bucher announced that she made reservations for a bus trip to see "The Spirit of America" on June 11, 1994.

Sarah Weber visited Mary Clark, who resides in The Zion Home.

For the State Farm Women's convention, members of the social committee will be making table favors.

The county convention will be held on Nov. 6 at the Farm & Home Center.

## Lancaster Society 8

Lancaster Society of Farm Women No. 8 met on October 14 at the home of Mary Anne Spangler in Marietta. Kathryn Hess gave devotions. Julie Hetricks, Legislative Assistant to Tom Armstrong, State Representative, was guest speaker. She told of various services handled by them.

The November 10 meeting is scheduled to be at the home of Margaret Heisey in Mountville. Members are to bring items for the Food Bank.

## Lancaster Society 15

Thirty members of Farm Women #15 attended their 55th anniversary dinner on Sept. 30, at Bards.

Following the dinner a time of memories were led by president Jean Barnes. Committee chairman Nancy Shoemaker led with devotions. Nancy also read the minutes of the first Farm Women Meeting of #15 in 1938. The group was organized by Anna Schreiber at Kirkwood Store where the Schreibers lived.

# Farm Women Societies

## Lancaster Society 19

Farm Women's Society #19 entertained Society #2 at the Hempfield Church of the Brethren on October 9.

Devotions were led by Opal Ruhl who read from "Going Strong in the Seasons of Life" and Phillipians 1, followed by prayer.

A delicious luncheon was served after which each member introduced their guest and told something about them.

Jay Irwin showed slides of his volunteer work in Albania and told of the poor conditions in that

country and their hunger for knowledge to improve those conditions.

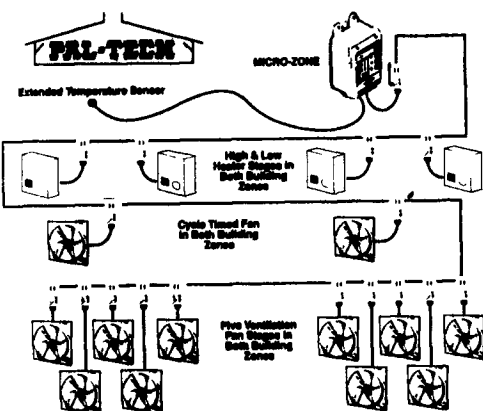
President Betty Saylor conducted the business meeting. Members will attend the Lancaster County Convention Nov. 6th at the Farm and Home Center.

The group will have their annual salted nut sale and are asked to bring their orders in by Nov. 13. Orders will be packed on Nov. 30.

The next meeting will be held at the Birch Knoll Restaurant for breakfast at 9 A.M.

## Warm up

# to our cool weather specials!



### MICRO-ZONE SPECIAL \$999

Control 1 Floor with 2 Zones Or 2 Floors With 1 Zone Each.

Price Includes Micro-Zone Model 2 with 300' extended sensor and 16 power modules.

Install it yourself because it uses your existing AC wiring.

### Shenandoah SPECIALS:

#### SPACE HEATERS

- 170,000-200,000 or 225,000 BTU's with deflector:
- Galvanized Cabinet-Pilot Ignition .....\$329
- Galvanized Cabinet-Electronic Ignition.....\$359
- Stainless Steel Cabinet-Pilot Ignition.....\$379
- Stainless Steel Cabinet-Electronic Ignition.....\$409
- Ag Space Heaters 40,000/60,000 BTU's:
- Stainless Steel Cabinet-Pilot Ignition.....\$319
- Stainless Steel Cabinet-Electronic Ignition.....\$349
- Portable thermostat.....\$35

Installation kit with gas cock, regulator and hose .....\$35

#### SHENANDOAH INCINERATORS:

- Round .....\$999
- Oval.....\$1,359
- The BRUTE .....\$1,999

#### GBUV BROODERS \$89 ea.

#### Save electricity with screw-in FLUORESCENT LIGHTS

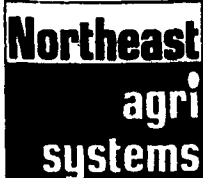
- 5-7-9 Watt .....\$5.49 each
- 13 Watt .....\$5.79 each

New Sealed Center Mount!



- OTHER SPECIALS:** • Fans & Shutters • Thermostats & Controls  
 • Kane Heat Mats • Damaged & Odd Size Shutters - \$25 each as is  
 • Get rid of pit gases - 10" & 8" pit manure Ventilation systems on special  
 • Woven Wire • Kraft Paper -36"x1500', 3 rolls for \$69

All Prices F.O.B. Lititz, Limited Quantities



Northeast Agri Systems, Inc.

Flyway Business Park  
 139A West Airport Road  
 Lititz, PA 17543

Ph: (717) 569-2702

STORE HOURS: Mon.-Fri. 7:30 to 7:30  
 Sat. 8:00 to Noon  
 24 Hr. 7 Day Repair Service

1-800-673-2580



### REDI-DOCK®

★ NEW Lease Program Available

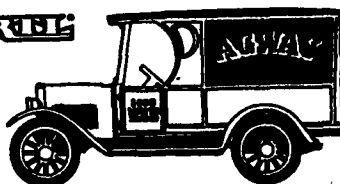


Redi-Dock System economically expands and diversifies loading and access capabilities

- Cost less than conventional construction
- Modular configuration maximizes versatility
- Allows expansion of warehouse space
- Installed without alterations to existing structure
- Quick and easy placement and relocation
- Offers tenants more flexibility
- No permits required

(800) 724-4881 Reading Precast Inc. (215) 926-5000

#### ERTL



Agway Bank  
 • 1923 Chevy panel bank • die-cast metal  
 • 1/25 scale (753-522)

#### 8th Edition

Agway Bank

\$11.99

While Supplies Last

(753-653)

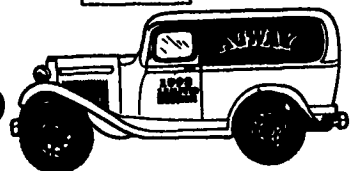
#### 3rd Edition ERTL

Agway Dime Bank

• 1932 Ford panel vintage vehicle  
 • 1/43 scale • die-cast metal  
 (753-521)

\$7.99

LIMITED QUANTITIES - NO RAIN CHECKS!



2nd EDITION BUCKBOARD WAGON \$14.99

2nd IN A SERIES SPEC CAST PENNY BANK \$16.99

COMPLETE SET OF AGWAY ERTL PENNY BANKS I-8

\$675.00

Previous Models Available - Call For Pricing

HENRY B. HOOVER, INC.  
 1731 W. Main St., Ephrata - 733-6593

STORE HOURS: MON.-THURS. 7:30-7:00  
 FRI. 7:30-8:00; SAT. 7:30-4:00

WE SHIP UPS



AGWAY Country Values