

# Lebanon Farm Women Do Whatever They Can, Wherever They Can, Whenever They Can

**LOU ANN GOOD**  
Lancaster Farming Staff  
LEBANON (Lebanon Co.) — Business, music, food, and gossip filled the agenda for the 53rd annual convention of Lebanon County Society of Farm Women.

About 160 members from 21 county societies attended the day-long event held at Kenbrook Bible Camp on October 13. A report on their yearly activities showed that Farm Women, according to president Fern Hitz, "wish to do all they can, wherever we can, and whenever we can."

Farm Women expressed their concern for the needy by donating \$1,000 to Mid Western flood victims and another \$1,000 for the heifer project, a food producing animal given to a family in need who then passes on the first female offspring to another family in need.

Election of new county officers resulted in the following: Lois

Bohn, president; Nancy Bennet, 1st vice president; Eileen Keller, 2nd vice president; Susan Hawley, secretary; and Rosene Bollinger, treasurer.

Members who are in their eighties and nineties were honored by receiving a special Farm Women emblem pin. Ninety-year-old members included Hilda Balmer, Society 1; Sadie Knapp, Society 2; and Mary Light, Society 1.

Eighty-year-old members honored were Edna Kelly, Society 3; Aletha Neidigh, Society 3; Miriam Roush, Society 6; Edith Wike, Society 8; Florence Reed, Society 10; and Mary Arnold, Society 12.

Members held a special memorial service for members who had passed away during the past year. These included Minnie Hunsicker, Society 2; Ida Moyer, Society 6; Florence Kaylor, Society 5; Blanche Wenger, Society 5; and Violet Alger, Society 3. Helen Deaver, 89-years-old sang a solo

## "I Found the Answer."

Educational and entertainment prevailed in the afternoon session by talks by Martha Gregory, 4-H director; Jennifer Bashore, Lebanon County Dairy Princess; a Red Cross worker, and by Grace Miller alias Tillie Hiernerschnitch.

Tillie kept the audience in stitches by her tales of life in culturally deprived Yummerdall. As a lady in waiting, she said that still waiting as she is too young for medicare and too old for men to care. In her speech, Tillie included snippets of gossip about many of the Farm Women members. The character Tillie is impersonated by Grace Miller of Landis Valley, a former school teacher, librarian, and bus tour guide.

State president Arlene Witman encouraged members to continue their many good deeds by reminding them, "It's nice to be important, but it's more important to be nice."



Pennsylvania Farm Women president Arlene Witman, left, congratulates Sadie Knapp, 90-year-old member of Society 2.



Fern Hitz, left, pins 80-year-old Florence Reed of Society 10.



Tillie Hiernerschnitch says she is a "blabbermouth" from Yummerdall where brains are a luxury and not standard equipment.



Eight-nine-year-old Helen Deaver sang "I Found the Answer" during the memorial service.



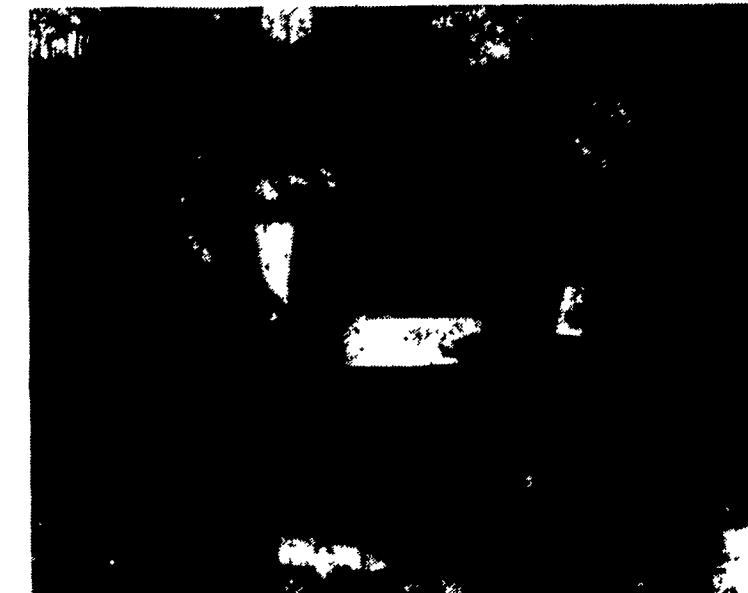
More than 160 members attend the 53th annual convention of the Lebanon County Society of Farm Women.



Outgoing president of the Lebanon County Farm Women Fern Hitz, left, pins Lois Bohn as the newly-elected president.



Arlene Witman, Pennsylvania Farm Women president, hugs newly elected Lebanon County officers, from left: Lois Bohn, president; Nancy Bennet, 1st vice president; Eileen Keller, 2nd vice president; Susan Hawley, secretary; and Rosene Bollinger, treasurer.



Lebanon County Farm Women president Fern Hitz hands a \$1,000 check to a Red Cross worker. The money will be used for flood victims in the midwest.