

- 1993 Ford Club Wagon 15 Pass., Maxi-Van, V8, AT, Dual AC, Loaded, Gray/Black, 21,000 Mi.....\$17,800
- 1991 Jeep Wrangler Softop, 4x4, 4 Cyl., 5 Spd., AM-FM Cass., Red, 29,400 Mi.....\$9,900
- 1990 Dodge Ram 350-15 Pass. Maxi Van, V8, AT, Dual AC, AM-FM Blue, 54,800 Mi.....\$10,600
- 1989 Ford Aerostar Eddie Bauer, V6, AT, Loaded, Blue/Tan, 76,400 Mi.....\$7,800
- 1989 Chevy S-10 Tahoe 4x4 Baja, 4.3 V6, AT, AC, AM-FM Cass., Red, 79,400 Mi.....\$7,900
- 1989 Dodge Ram 350, 12 Pass Van, V8, AT, Dual AC, AM-FM Cass., Blue/White, 78,200 Mi.....\$7,900
- 1988 Chevy 3500 Silverado 4x4, 454, V8, 4 Spd., Loaded, Red, Silver, 44,000 Mi.....\$12,600
- 1987 Chevy Celebrity Eurosport, 4 Cyl., AT, Loaded, Black, 52,000 Mi.....\$4,900
- 1987 Peugeot 505 STX V6, AT, Loaded, Maroon, 72,000 Mi..\$4,900
- 1987 Dodge Colt Premier Turbo AT, AC, AM-FM Cass., Blue, 56,400 Mi.....\$3,900
- 1987 Dodge Omni 4 Dr., 4 Cyl., AT, AM-FM, Blue, 78,200 Mi.....\$2,400

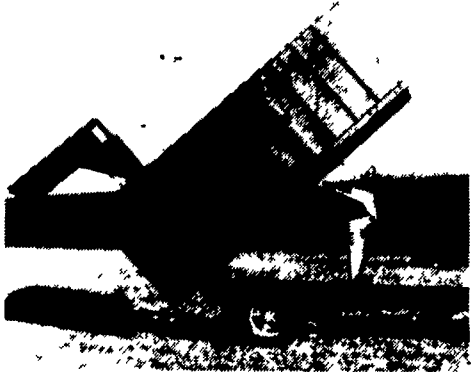
**Brubaker's Auto Sales**  
Myerstown, PA  
717-866-5237



**1979 IH  
18' Bulk Blower Truck**  
3208 Cat, New Clutch & Ejectors, 10 Speed, 50,000 GVW

Lebanon Co.  
717-866-6015 7:30-5 Weekdays

**12 Years Experience In  
FREE FLOW DUMPING**  
Of Silage & Other Bulky Materials



Hi-Clearance Hydraulic Tailgate Combined w/Smooth, Tapered Sides (3" Wider At Rear) Makes Dumping Bulky Materials Fast And Easy.

**The Season's Just Around  
The Corner - Order Now  
To Insure Delivery**



**Hostetler Truck  
Bodies & Trailers**  
Rt. 322 Milroy, PA 17063  
(717) 667-3921

**35 TRUCKS & TRAILERS**

1961 International grain dump truck, 14' bed, tandem, 36,000 GVW, \$2500, good condition. 215-286-9708.

1963 Jeep dauce 1/2 cab & chassis, 10-WD army truck, soft top, 26,000GVW, good manure truck or well driller, h.d., \$1500 OBO. 412758-5706.

1965 International Truck, Tandem Axle, Gas, 18' Grain Body w/Hoist, Good Condition, \$2500. (717)664-4577 After 6PM.

1968 Autocar dump truck, 65,000# rears, 270 Cummins, 13 speed, \$6800. 215-588-9543

**TIRONIE'S  
TARPS**  
717/584-2928  
1/800/874-2928

**TRUCKS AND EQUIPMENT  
IN STOCK AT HOSTETLERS**

- 8' Pickup Truck Flatbeds, All Steel Construction, Bulkhead & Rear Light Skirt.....\$595
  - 9' Truck Flatbeds for Dual Wheel One Ton Trucks, With or Without Gooseneck Compartment, Bulkhead and Rear Light Skirt.....Starting At \$595
  - 12' Stake Body Flatbed for Truck, Tread-plate Floor, Bulkhead, Stake Pockets with Rub Rail. Stake Sides Available.....\$920
  - 16' Knapheide Grain Body, Heavy Duty Construction, 3/16" Smooth Steel Floor, 12" Crossmember Spacing, 40" Grain Sides with Rear Grain Gate.....\$2,595
  - 16' Aluminum Grain Body, 48" High Sides, Dump Thru Tailgate.....\$4,995
  - 1978 International, V8 Gas, 5 & 2 Speed, Low Miles, Nice Truck, Cab & Chassis.....\$2,995
  - GMC Tandem, V8 Gas, 5&2 Speed, Air Brakes, 40,000# GVW, Will Take 18' Grain Body.....\$5,950
  - 1984 Ford Grain Truck, V8 Gas, 5 & 2 Speed, New 14' Knapheide Grain Body with 40" Grain Sides, and 14 Ton Hoist.....\$10,900
- Call for any additional information and prices



**Hostetler Truck  
Bodies & Trailers**  
Rt. 322 Milroy, PA 17063  
(717) 667-3921

**(800) 533-3837**

**YOUR DIRECT LINE TO GENUINE GM PARTS**  
When you call the number listed above you'll reach our wholesale parts specialists, who can help you keep your GM repair work moving quickly. Ask About:

- Specializing in GM Medium Duty Trucks, Current and Obsolete.
- \$500,000 Parts Inventory
- Parts Locator For Those Hard To Find Items
- We Ship Anywhere. Local Delivery Available.
- Experienced, Knowledgeable Personnel.

**LEFEVER BROS.  
DILLSBURG**

(717) 432-9697

Quality Dealer Since 1921  
406 U.S. Route 15 • Dillsburg, PA 17019



*Mr. Goodwrench*

**REEDMAN LEASING  
1800 CARS-TRUCKS**

\*All Cars Below Equipped With Auto Trans, Air Cond, PB, PS, & Stereo.

\*'94 NEW CHRYSLER LHS SDN \$299.00  
Per Month For 24 Months. Closed End Lease. Stock #53063 6 Cyl VIN RH112873 MSRP \* \$30,078 Total Of Monthly Payments \$7178 With \$2700 Down.

\*'94 NEW CORVETTE CPE \$393.00  
Per Month For 36 Months. Closed End Lease. Stock #15009 8 Cyl VIN R5101015 MSRP \* \$39,719 Total Of Monthly Payments \$14,149 With \$3000 Down

\*'94 NEW LINCOLN MARK VIII \$438.00  
Per Month For 24 Months. Closed End Lease. Stock #9514 8 Cyl VIN RY617414 MSRP \* \$38,875 Total Of Monthly Payments \$10,512 With \$3000 Down 11\* Per Mile Over 30,000

\*'94 NEW LINCOLN TOWN CAR \$413.00  
Per Month For 24 Months. Closed End Lease. Stock #9089 6 Cyl VIN RY623109 MSRP \* \$35,375 Total Of Monthly Payments \$9,912 With \$3000 Down 11\* Per Mile Over 30,000 Miles

\*'94 NEW LINC CONTINENTAL \$375.00  
Per Month For 24 Months. Closed End Lease. Stock #9027 6 Cyl VIN RY605267 MSRP \* \$34,475 Total Of Mthly Payments \$9000 With \$3000 Down 11\* Per Mile Over 30,000 Miles

\*'94 NEW CHEV CAMARO CPE \$228.00  
Per Month For 36 Months. Closed End Lease. Stock #40022 6 Cyl VIN R2100895 MSRP \* \$16,361 Total Of Mthly Payments \$8208. With \$2500 Down

\*'94 NEW CHRYSLER CONCORDE SDN \$279.00  
Per Mth For 36 Months. Closed End Lease. Stk #9018 6 Cyl VIN RH114846 MSRP \* \$21,310 Total Of Mthly Pymts \$10,044 With \$2500 Down

\*'94 NEW MERC GRAND MARQUIS GS \$312.00  
Per Month For 24 Months. Closed End Lease. Stock #91061 6 Cyl VIN RX613149 MSRP \* \$21,045 Total Of Mthly Payments \$7488 With \$2500 Down 11\* Per Mile Over 30,000

\*'94 NEW MERC SABLE GS SDN \$239.00  
Per Month For 24 Months. Closed End Lease. Stock #94538 6 Cyl VIN RA606715 MSRP \* \$18,265 Total Of Monthly Payments \$5736 With \$2000 Down 11\* Per Mile Over 30,000 Miles

\*'93 NEW MERC COUGAR \$284.00  
Per Month For 24 Months. Closed End Lease. Stock #93821 6 Cyl VIN PH648525 MSRP \* \$16,728 Total Of Mthly Payments \$6816 With \$1500 Down 11\* Per Mile Over 30,000

**SHOP REEDMAN BEFORE YOU BUY LEASE OR RE-LEASE A CAR OR TRUCK**

**FLASH!** If You Still Have Payments On Your Present Leased Car Or Truck We Would Like To Bid On Your Lease For A New Vehicle, Individual Lease, Or Company Leasing.

\*'94 NEW CHEV CAVALIER VL 4 DR \$175.00  
Per Month For 36 Months. Closed End Lease. Stock #45078 4 Cyl VIN R7137373 MSRP \* \$11,565 Total Of Mthly Pymts \$6300 With \$1000 Down

\*'94 NEW CHEV LUMINA APV \$223.00  
Per Month For 36 Months. Closed End Lease. Stock #34008 6 Cyl VIN RT00731 MSRP \* \$18,953 Total Of Mthly Payments \$8028 With \$2000 Down

\*'94 NEW PLY VOYAGER \$223.00  
Per Month For 36 Months. Closed End Lease. Stock #76002 6 Cyl VIN RR803001 MSRP \* \$17,871 Total Of Monthly Payments \$8028 With \$1500 Down

\*'94 NEW CHEV S-10 BLAZER 4 Dr 4x4 \$239.00  
Per Month For 36 Months. Closed End Lease Stk/ T-5030 6 Cyl VIN R2108045 MSRP \* \$22,805 Total Of Mthly Pymts \$8804 With \$2000 Down

**Closed End Leases**  
First Monthly Payment Plus A Security Deposit Equal To One Monthly Payment Is Required Upon Delivery. Lessee May Have The Option To Purchase The Car At Lease End At A Price To Be Negotiated With The Dealer At Lease Inception. At The End Of The Lease If You Do Not Exercise Your Option To Buy You Will Pay A Mileage Charge Of 10¢ Per Mile For Each Mile In Excess Of 15,000 Miles Per Year Plus The Costs Of Any Excess Wear Or Tear.

\* Price Includes All Cost To Be Paid By A Consumer, Except For Licensing Costs, Registration Fees & Taxes.

CALL 215-757-4961  
Ask For Reedman Leasing Dept.  
Reedman Rte 1 Langhorne Pa.

**Huntingdon Equipment**

Rentals Available **GOOD USED EQUIPMENT**

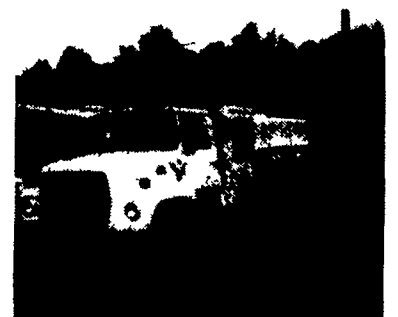
Huntingdon Valley, PA • 215-672-9667 • 1-800-543-3833 • Eddie



20 Ton P&H Crane 3 Sec. Hyd. Boom mounted on a 1968 F.W.D. both engine gas (new front 89), fleet maintenance.



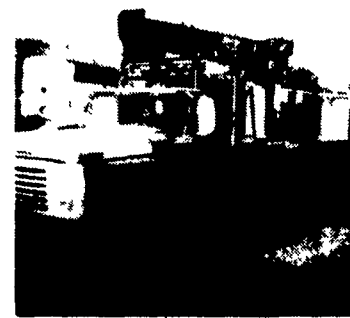
1985 F-600 8.2 Diesel, Auto, 5 Man Cab, Utility With Rollup Door On Rear, Clean, Low Mileage, 1 of 3.



1979 Ford V8 10-Speed, Air, 14,000 Lbs. Boom, 2 Speed Auger, Upper Controls, 4 Outrigger, Dig Holes-Lift-Put Man In Air. This Unit Does It All.



Holan 70' Double Bucket 75' working height mounted on 1981 Western Standard, 6x6 Flatbed, CAT 3208, Auto.



Need a Lift? We Have A Large Selection Of Boom Trucks Up To 14,000 lbs. Cap. Some With Post Diggers.



Bucket Trucks 28' to 65' Gas. and Diesel. Call For Details.

**DIGGER DERRICKS/AERIAL BUCKETS/UTILITY EQUIPMENT**