

You can't field better value.

SAFEMARK

QUALITY • SERVICE • DEPENDABILITY • ECONOMY

3-RIB

500-15	4 Ply TT	\$34
600-16	4 Ply TT	\$38
600-16	6 Ply TT	\$39
650-16	6 Ply TT	\$47
750-16	6 Ply TT	\$56
1000-16	8 Ply TT	\$89
1100-16	8 Ply TT	\$99

POWER GLIDE 4 Rib

Size	Ply	Price
9.5L-15	6 Ply	\$77
11L-15	8 Ply	\$99
750-16	6 Ply	\$69
1000-16	8 Ply	\$86
1100-16	8 Ply	\$109

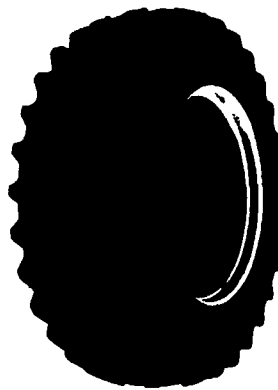
FARM UTILITY WAGON TIRES

5.90-15	4 Ply TT	\$43
9.5L-15	8 Ply TT	\$45
11L-15	8 Ply TT	\$46
11L-15	12 Ply TT	\$65
12.5L-15	10 Ply TT	\$73
12.5L-16	14 Ply TT	\$90

POWER MARK L/S RADIAL II

Radial Rear Tractor Tire

- Radial performance at a significantly lower price
- New cavity shape for low carcass stress and long, narrow footprint, improved durability
- Unique longbat/shortbar tread design with increased lug count for excellent roadability
- Continuous no splice tread improves tire uniformity and eliminates open tread splices
- Belt package gives excellent bruise and puncture resistance
- Engineered to full Tire and Rim dimensions
- Heavy duty trash shield for extra bead area protection with pry notch



Size	PRICE
15.5R38 ★	\$339
18.4R34 ★	\$449
18.4R38 ★	\$499
20.8R38 ★	\$639

MULTI-ANGLE MB BIAS

11.2-24 4 Ply
\$149.00

12.4-28 4 Ply
\$159.00

13.6-28 4 Ply
\$179.00

15.5x38 6 Ply
\$289.00

18.4x34 6 Ply
\$379.00

18.4x38 6 Ply
\$409.00

18.4x38 8 Ply
\$449.00

20.8x38 8 Ply
\$589.00

- Excellent drawbar pull with long-bar, short-bar lugs for improved traction

- Designed for improved stability and roadability, plus reduced vibration

- Strong angle-braced lugs have self-cleaning design

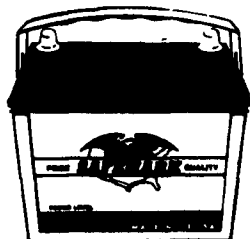
- High-strength polyester core body, and heavy duty rim shield protects tire from damage



FIELD HAZARD WARRANTY ON REAR FARM TIRES

Participating SAFEMARK Dealers

- | | |
|---|--|
| <p>Adams
Mar-Bar Tire Service
Hanover, PA 17331
(717) 633-6412</p> | <p>Greene
Burns Tire Service
Waynesburg, PA 15370
412-627-9263</p> |
| <p>Lancaster
Biglerville Tire & Auto
Biglerville, PA 17307
(717) 677-8338</p> | <p>Lancaster
Leola Tire Service
Leola, PA 17540
(717) 656-2574</p> |
| <p>Blair
Ake's Mobile Service
Williamsburg, PA 16693
(814) 832-3251</p> | <p>Messick
Farm Equipment
Elizabethtown, PA
(717) 367-1319</p> |
| <p>Rhode's Farm Supply
Williamsburg, PA 16693
(814) 832-2491</p> | <p>Lebanon
Amtire Corp.
Palmyra, PA 17078
(717) 838-5491</p> |
| <p>Bradford/Sullivan
Histand Farm & Home Service
Rome, PA 18837
(717) 744-2371</p> | <p>Lebanon Valley
Implement Co., Inc.
Richland, PA 17087
(717) 866-7518</p> |
| <p>Bradford
Isaac's Tire Sales
Canton, PA 17724
(717) 673-8121</p> | <p>Lehigh Co.
Kermit K. Kistler
Lynchport, PA 18066
(215) 298-2011</p> |
| <p>Centre
Dunkle & Grieb
Centre Hall, PA 16828
(814) 364-1421</p> | <p>Joe's Battery & Tire
Allentown, PA 18103
(215) 437-4961</p> |
| <p>Chester/Delaware
J&L Tire Service
Chatham, PA 19318
(215) 869-0450</p> | <p>Luzerne
Pittson Tire Co.
Pittson, PA 18640
(717) 656-8181</p> |
| <p>S.G. Lewis & Sons
West Grove, PA 19390
(215) 869-2214</p> | <p>Mifflin
Miller-Lake, Inc.
Belleville, PA 17004
(717) 935-2335</p> |
| <p>Stoltzfus Farm Service
Cochranville, PA 19330
(215) 593-2407/2408</p> | <p>Northampton/Monroe
Northampton Farm Bureau
Tatamy, PA 18085
(215) 759-3254</p> |
| <p>Clinton
Dotterer Equipment, Inc.
Mill Hall, PA 17751
(717) 726-3471</p> | <p>Northumberland
Rovendale Supply
Watsonstown, PA 17777
717-538-5521
717-742-7521</p> |
| <p>Columbia
Steve Shannon Tire Co., Inc.
Bloomsburg, PA 17815
(800) 343-TIRE
Rte. 487, Benton, PA
(717) 925-2821</p> | <p>Schuylkill
Charles Snyder, Inc.
Tamaqua, PA 18252
(717) 386-5945</p> |
| <p>Cumberland
Barrick Tire Sales
Newville, PA 17241
(717) 776-5762</p> | <p>Somerset
Maple City Tire
Meyersdale, PA 15552
(814) 634-0545</p> |
| <p>Erie
Mike's Auto Repair
North East, PA 16428
(814) 725-9091</p> | <p>Union
Mifflinburg Farm Supply, Inc.
Mifflinburg, PA 17844
(717) 966-3114/3115</p> |
| <p>Franklin
Forrester Farm Equip., LTD
Chambersburg, PA 17201
717-263-0705</p> | <p>Washington
Canonsburg Supply & Equipment Co., Inc.
Canonsburg, PA 15317
(412) 746-2500</p> |
| <p>Stoneham's
Waynesboro, PA 17268
(717) 762-3614</p> | <p>Wyoming Co.
J. Roberts & Son Tire Co.
Meshoppen, PA 18630
(717) 833-5582</p> |
| <p>Bruce B. Gamble & Sons
Concord, PA 17217
(717) 349-2670</p> | <p>York Co.
AI Tire Co., Inc.
York, PA 17454
(717) 792-0332</p> |
| <p>Fulton
Clugston Farm Equipment
Needmore, PA 17238
(717) 573-2215</p> | <p>Corn Hill Farm, Inc.
Elters, PA 17319
(717) 938-2012</p> |



BATTERY BARGAIN

\$47⁰⁰

5-26 515 AMPS

- Unique billboard vent appearance
- Higher cranking than conventional batteries
- Sizes to fit most domestic and import cars and light trucks

FARM TRACTOR BATTERY

\$66⁰⁰

FC-30H 560 AMPS

- Rugged high impact case and cover for vibration resistance



- Increased starting power
- Built to last season after season
- Made in the USA



SAFEMARK

Division of Pennsylvania Farm Bureau

Camp Hill, PA 17011

CALL TOLL FREE

1-800-PFA-TIRE

For Dealer Nearest You

A Proud Tradition of Quality, Value and Service.

- QUALITY
- SERVICE

- DEPENDABILITY
- ECONOMY

NOW SERVING NEW YORK, NEW JERSEY & CONNECTICUT