

Take Exit 20B
Off Of I-83, 5 1/2 Mi. West
To Belmont Farm.

AC 190
Diesel, 3300 Hours, Excellent Cond.,
Perhaps the Last 190 Left In Captivity
That Does Not Jump Out Of Gear
\$3,500
410-833-9091

1a CONSTRUCTION EQUIPMENT

12,000 lb. towmotor, lifting cap. 17', dual pneumatic tires, \$4500 OBO. 717-255-3798; 717-873-0529.

1974 CAT 941B Loader, 2300 Hours, Good Working Condition, \$14,000. (301)371-9346.

1974 JD 310 Loader Backhoe, Good Condition, Ready to Work. \$8,400. (301)371-9346.

1978 JD 850 Dozer, Rebuilt Engine, D6 U/C, Good Bottom, Ready to Work. \$21,000. (301)371-9346.

1984 JD 755A Track Loader, Engine Rebuilt, New Radiator, Rebuilt Converter, Ready to Work. \$19,500. (301)371-9346.

1990 Case 580K 4X4, 1488 Hours, Extend-A-Hoe, 16"-24"-36" Bucket. Excellent Condition. \$34500. (215)663-9221.

35 ton Rogers, detached neck, 10x15 tires, very good condition. \$8,850. (215)663-9221.

3Pt. Hitch Post Hole Digger, \$250. (301)371-9346.

944 CAT Rubber Tire Loader, Rebuilt Motor and Hyd. Cyl's, Cab, 2 Yd. Bucket, Needs Brake Work \$6800; 955H CAT Loader, Pedal Steer, Cab, Ripper, Fair U/C. \$8500. (717)532-6540.

BACKHOE ATTACHMENT for Gehl skid steer w/2 buckets, \$2,500. 410-833-9091

Case 1845 skid loader, hydraulic pumps have about 200 hrs since rebuilt motor, about 500 hrs. since rebuilt, backhoe goes along. Spring Garden Plumbing, 339 Spring Garden Road, Kinzers, PA 17535. 717/442-9622.

Case 455C crawler loader, 1500 hrs., good condition, \$22,500; CAT 951C crawler loader, good U/C, 1 1/2 yd.bucket, \$15,000; Case W14 wheel loader, cab w/ heater, good condition, 1 owner, \$23,000; JD 210C loader backhoe, 2WD, ROPS, good, 1 owner, \$16,900; Case 1840 unloader, rental machine, 75 hrs., w/hydraulics. \$14,500. A.L. HERR INC., 717-786-3521.

D2 caterpillar not running but good for parts, \$500 OBO. South Brunswick, NJ (908)297-2158.

Forklift, 8000 lb. Hyster on 30" hard rubber duals, 3-stage mast. 717/354-0192.

DISMANTLING FOR PARTS: Just arrived for parts: IHC 500C dozer w/ winch, OROPS, good engine, good U/C, good RH final drive. All parts available.

BALANDA EQUIPMENT P.O. Box 407 RT 29 Palm, PA 18070. 1-800-322-8030

1988 KOMATSU D57-S 2-1/2 yd ROPS, 1800Hrs. \$47500; CASE-350 6-way Dozer. \$6900; 1986 DRESSER-175C 2-1/2 yd. 90% Bottom. \$32500; 12-Ton Tag-A-Long \$2500; 35-Ton Stiff Neck Tandem-axle Trailer. \$3000. (609)466-2953.

1989 Ditch-Witch trailer, 2 axles, good condition, \$450. (301)371-9346.

1989 Ford 340B tractor loader. 1988 Case 580E loader backhoe 4x4. 1991 JD 2155 tractor loader. 1985 Case 455C crawler loader. 1985 Ingersol Rand 185CFM compressor diesel. Smith 100 compressor gas. (215)326-4969.

WANT TO BUY all makes and models of construction equipment. (301)694-6148, (301)371-9299 fax.

WHEEL LOADER Michigan 35 w/recent Perkins engine, excellent 3/4 yard machine w/ buckets & forks, \$6,000. 410-833-9091

WHEEL LOADER WALDEN 5000, articulated, new Deutz engine, bucket w/grapple, extra whls., excellent, \$5,500. 410-833-9091



MF 44C Loader
Diesel Torque Converter, 3 Speed,
Clean Machine, Good Condition
\$16,500
(717) 733-1602

Case 252, 602, 1102 Rollers Demonstrators
Call For Special Pricing

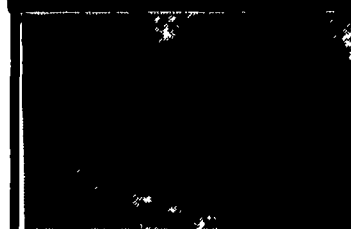
1988 Case 1835C, 1500 hours, w/Sims enclosure kit..... \$9,500
Case 580 Super E, cab, extend-a-hoe, 2 WD \$16,900
1987 Case 252 roller, reconditioned..... \$12,500
Zoom Boom 34' forklift..... \$27,500

Vernon E. Stup Co.
5859 Urbana Pike
Frederick, Md. 21701
301-663-3185



WENGERS, INC.
251 South Race St., Myerstown, PA 17067
717-866-2130
HOURS Mon-Fri. 7:30 to 5:00. Sat 7:30 To Noon

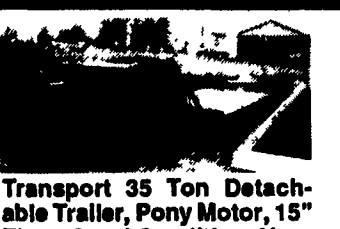
NIGHTS, PHONE
717-866-7147
717-273-9089
FAX
717-866-4300



1977 Case 850B Crawler Loader, ROPS, Runs Good.
\$12,500



Advance 5600D Sweeper-Diesel, Hi Dump, Cab, Hydrostatic, Runs Good.
\$5,900



Transport 35 Ton Detachable Trailer, Pony Motor, 15" Tires, Good Condition, Non-Ground Bearing.
\$9,900



1987 Bobcat 743 Diesel Skid Loader, Good Tires, New Bucket, New Paint, Runs Good.
\$9,500



1988 Vermeer 1200 Wood Chipper, 1661 Hours, Ford Gas, Runs Good.
\$6,900



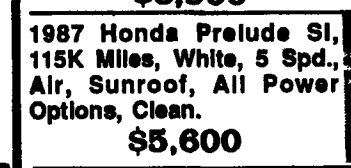
Gallon 503 Grader, Gas, Looks Good, Runs Nice.
\$6,900



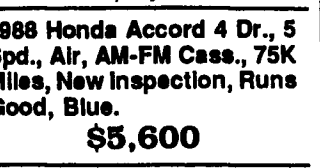
1985 JD 575 Skid Steer, 1000 Hours, Diesel, Runs Good.
\$7,900



1986 Gallenberg Rock Picker With Truck Elevator, PTO Drive, Good Condition.
\$8,900



1987 Honda Prelude Si, 115K Miles, White, 5 Spd., Air, Sunroof, All Power Options, Clean.
\$5,600



1988 Honda Accord 4 Dr., 5 Spd., Air, AM-FM Cass., 75K Miles, New Inspection, Runs Good, Blue.
\$5,600

FORKLIFTS
2,000 to 15,000 Lb.
\$1,000 to \$12,000
Gas/LP-Diesel-Electric
Cushion-Pneumatic-Rough Terrain
New Komatsu Forklifts Available
PA INDUSTRIAL EQUIPMENT
(215) 326-7090

PARTS PRICED RIGHT
DISMANTLING MOST MAKES & MODELS
OF CONSTRUCTION EQUIPMENT

Cat	IHC	Gallon
Case	Michigan	Wabco
John Deere	Hough	Dynaboe
Trojan	Terex	Koehring
Drott	Hein Werner	AC/Fiat Allis

& Others
Over 600 Machines Dismantled
NATIONWIDE PARTS LOCATING SERVICE
We have two Computer Parts Locator Networks. Nationwide & Canada, ready to serve you. In less than a minute over 400 Used & New Parts Dealers will receive your parts request. Parts are located easily & at substantial savings. Try Our Services.
Save \$\$\$ Parts Shipped Anywhere Direct To You. All Parts Guaranteed
"We Return All Phone Calls"

BALANDA EQUIPMENT CO., INC.
P.O. Box 407 • Route 29 • Palm, PA 18070
Phone: (215) 679-3900
• Fax: (215) 679-8727
TOLL FREE: 1-800-322-8030

TRUCKS/CARS

1977 Ford F350 28' Bucket Truck..... \$3,500
1972 Ford F600 Dump - Gas \$3,900
1987 Honda Prelude SI-5 Speed..... \$5,600
1988 Honda Accord - 4 Dr - 5 Spd..... \$5,600
1977 Ford F700 Bucket Truck..... \$5,950
1989 Acura Legend L Sedan-Auto \$14,500
1970 Vette Conv. - Low Miles \$19,500

BACKHOES

Hoe Attachments From \$2,000
Ford 1801 - Gas \$5,900
JD 300 Diesel - 1968 \$7,900
JD 300B - Diesel - 1974 \$7,900
Dynahoe 200B - 4x4 - Big \$13,000
Case 580E - ROPS - 1987 \$16,500
Case 680G - Cab - 1980 \$16,500
JD 310B - ROPS - 1985 \$16,500
JD 510 - ROPS - 1983 \$18,500
JD 510B - Cab - 1984 \$22,500
Case 580K - Cab - Ext - 1987 \$23,500
JD 510B - Cab - 1985 \$24,500
JD 410B - 4x4 - Cab - 1983 \$26,500
Case 580K - Cab - 4x4 - Ext. - 4N1 - 1990 \$32,500

RUBBER TIRE LOADERS

Hough 90 Diesel - 1959 - 2.5 Yd. \$3,500
Versatile 150 - Cab - 1977 - 1.25 Yd. \$9,500
Fiat 345B - Cab - Forks - 1977 \$9,500
JD 444 - Cab - Forks - 1979 \$13,500
JD 544A - Cab - 2 Yd. - 1971 \$16,500
Case W20B - Cab - 1979 \$17,500

TRACTORS WITH LOADERS

JD 300 Gas - 3 Pt. - PTO \$4,900
Ford 600 - Gas - 3 Pt. - PTO \$4,900
Versatile 150 - 4x4 - 3 Pt. - PTO - 1977 \$9,500

MISCELLANEOUS CONSTRUCTION

(50) New & Used Hoe Buckets..... COME SEE
(50) Loader Buckets COME SEE
(50) Set Forklift Forks..... COME SEE
Tree Planter - 3 Point..... \$795
(2) Cinder Spreader - Each..... \$1,000
3 Pt. Sweeper Broom..... \$1,000
Ripper For Crawler..... \$1,000
Root Rake - 7' - New..... \$1,200
(2) Essick 1 Ton Roller Each \$1,450
Sweeper - Pull Type - Gas \$1,800
(8) Demolition Hammers..... Each \$2,500
Vermeer 12 3 Pt. Brush Chipper..... \$2,900
Schramm 160 Air Comp..... \$3,000
Large Snowblower For Loader..... \$3,000
Vermeer Stump Grinder \$3,500
IH 140 w/Power Broom- 1972... .. \$3,900
(5) Sheeps Foot 2 Drum Roller..... \$2,900/\$4,500
Vermeer T218 Tree Spade w/Trailer ... \$4,900
Advance Retriever 5600D Sweeper..... \$5,900
Gallon 503 Grader - Gas \$6,900
Vermeer 12" Brush Chipper - Gas..... \$6,900
IR 160 Diesel Compressor - 1990..... \$8,500
Advance Retriever 6600G Sweeper..... \$8,900
Gallenberg Rock Picker - 1986 \$8,900
JD 760 Scraper..... \$9,900
Fiat FG85 Grader - 1982 \$16,500
JD 570' Grader - 1970..... \$16,500
(2) Tampro RS28B 84" Vib. Roller..... \$15,500-\$17,500
JD 690B Excavator - 1979 \$23,500
Tampro RS28D 84" Vib. Roller... .. \$24,500
JD 690B Excavator - 1982..... \$27,500

DOZERS

IH TD5 - Winch - No Blade \$2,700
MH 200 - 6 Way \$6,900
IH TD8E - 6 Way - 1979 \$19,500
Cat D6C - ROPS - 1969 \$22,500
Cat D5B - Cab - 1984..... \$36,500

CRAWLER LOADERS

Cat 955H - As Is - 1962 \$3,900
Cat 977H - As Is - 1962 \$3,900
IH 500C - 1969 - 4 In 1 \$4,800
JD 450 - 1966 - Diesel..... \$5,000
JD 350 Diesel - ROPS - 1969 \$6,500
Cat 933 - Diesel - 1961 \$6,900
Cat 941 - Diesel - 1968 \$9,500
Case 850B - ROPS - 1977 \$12,600
Case 1150C - ROPS - 1981 \$18,500
Case 455C - ROPS - 1986 \$21,500
Case 1155D - 4NI - 1983 \$24,500
CAT 983 - Cab - 1969 \$29,500

TRAILERS

(2) 1993 5 Ton Tag-A-Long - 6.5x18... \$2,195
1978 3 Axle 11 Ton Tag-A-Long - 8x18 \$2,200
2 Axle 12 Ton Tag-A-Long - 8x17... .. \$2,400
1984 11 Ton Tag-A-Long - 8x20 \$3,000
1994 5 Ton Tag-A-Long - 8x18 \$3,350
1979 Warren 12 Ton Tag-A-Long \$3,500
1992 10 Ton Tag-A-Long - 8x24 \$6,450
1973 General 20 Ton Air Brakes..... \$6,900
1973 Transport 35 Ton Detachable - 8x25..... \$9,900

SKID LOADERS

NH L35 - Diesel - 1972..... \$5,900
Gehl 4610 - Diesel \$7,900
JD 575 - Diesel - 1986 \$7,900
Bobcat 743 Diesel - 1983 \$8,500
Bobcat 743 Diesel - 1987 \$9,500
Case 1835C - Diesel - 1989 \$9,500
NH 555 Diesel - 1988 \$10,500
NH 785 Diesel - 1989 \$12,500

FORKLIFTS

Yale 5000 Lb. - Diesel - Air Tires - 1982..... \$7,900

LOG SKIDDERS

Clark 666B - Diesel - 1977 \$7,900
JD 440C - Diesel - 1980 \$19,500