

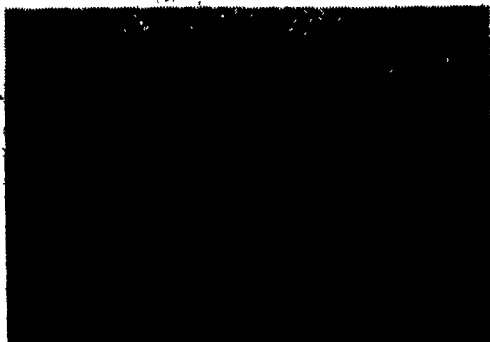
Int. 806 turbo.....\$6,900
 IH 966 hydro.....\$10,500
 IH 1486, Cab & Air, new TA &
 Clutch, excellent Condition\$15,900
 Farmall H, new tires, excellent
 condition.....\$1,600
 IH Hydro 70.....\$9,500
 IH 1066, new clutch, rubber
 & paint.....\$10,900

Financing Available
 717-776-5291

JEFF SHOWAKER

Exit 11, Rt. 81

Clean off-the-farm, field tested tractors
 Most Reconditioned. And
 Sold With Warranty



Case 1680 Combine 14 Ft. Head,
 Good Working Condition, Cab Has Heat and
 Air, Best Offer Will Be Sold
 717-865-0492

JD 3020B SR,
 1750 Orig. Hrs.,
 48 Loader,
 16.9x34 Tires,
 Duals
 Super AB, 2 Side
 Dressers Cult.
 Gehl 920
 Forage Wagon,
 3 Beaters, Roof
 (609) 953-0372



Deutz Allis 6260, 60 HP, New Paint, 90%
 Rubber, Like New Condition, Field Ready

\$8800 OBO

215/445-4148

(717) 428-1517 or 717/741-1797
 Fax No: (717) 428-2990
 RR 2 Box 314A, Kretzler Rd.
 York, PA 17403
 (Exit 3 Off Interstate 83)

Douglas
 EQUIPMENT & SUPPLY CO.

Many Pieces Not Listed!

If You Don't See It -
 Give Us A Call!

THINK
 SNOW
 JUST IN
 Trailer Load of New
 Meyer Snow
 Equipment, Snow
 Plows & Spreaders



I.R. 175 CFM Compressor,
 Deutz Diesel, Hesa Reels, 600
 Hrs., Good Cond.



Davey 150 CFM Compressor,
 Ford Diesel, 1600 Hrs., Hesa
 Reels



Clark 45C Loader, EROPS
 w/GM 4-53 Diesel
 Very Good Cond.

M52 Huber Maintainer w/
 front & center blades, cab &
 heater, nice clean machine



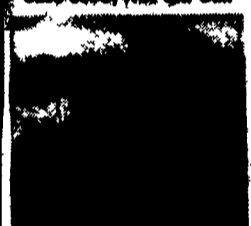
Gradall G-440, Gas Down
 Diesel Up, Remote, Good
 Cond., V.G. Rubber.



Ford A-82 Loader, ART FWD
 Ford Diesel, Good Cond. (1)
 New Engine

IH 280N T.L.B., Diesel
 Case-800C, ROPS... Call

Michigan 65 Loader, 4 WD, GM
 Diesel, Cab & Heater, Nice
 Machine.



644A John Deere Loader FWD-
 Art., Good Cond., Municipal
 Machine



Case 980 Tractor, 3 Pt., PTO,
 Diesel, Good Cond.

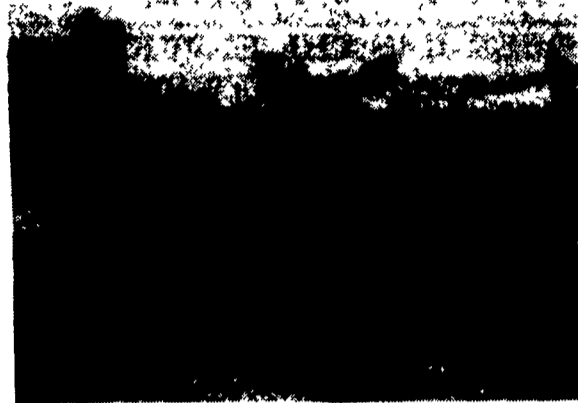


Case 880B 6 Way Dazer, 3123
 Hrs., 75%, Good Clean Tight
 Tractor



1840 Case Combine 1400 Hrs.,
 Fern Filled Tires, Diesel.

**INVESTMENT TRACTORS
 FOR SALE**



1950 MH 55 Diesel, Good Tin, Stuck
\$1,750

- 56 Ferg 35 New (0 Hours) Not Redone- Brand New!!!.....\$24,500
- 54 IH S-H Last Year Super H In Restorable Condition.....\$1,900
- 57 JD 320S 3 Pt.- Clean Original- Above Average.....\$6,900
- 57 JD 320U Clean 1 Owner- Fair Repaint- Easy Restore.....\$6,500
- 59 JD 330S Runs Good- Nicely Redone- GD Tag.....\$10,500
- 56 JD 420HC High Crop- Runs- Needs Restored.....\$3,500
- 58 JD 420U Needs Total Restoration.....\$1,900
- 60 JD 430W Factory PS- 5 Speed- Runs Good- Last Year.....\$3,900
- 60 JD 530 3 Pt- Power Steering- New Frt Tires- Redone.....\$4,900
- 57 JD 620 Try- 3 Pt.- Decent Tin- Rare All Fuel.....\$3,500
- 57 JD 620S Standard- Nicely Redone- Well Above Average.....\$5,900
- 58 JD 720 Pony- WF- 3 Pt.- Runs OK- Untouched.....\$4,100
- 57 JD 720S Pony- Standard- Good Tin- Stuck.....\$2,650
- 59 JD 730 DE- WF- 3 Pt- Fenders- Good Tin- Runs Fair.....\$4,500
- 59 JD 730S Pony- Standard- Nicely Redone.....\$5,900
- 55 JD 80 Off Farm Condition- Fair Tires- Good Tin.....\$5,900
- 57 JD 820 Pony- PTO- Needs Restored- As Is.....\$2,900
- 58 JD 820 Pony- PTO- Clean Untouched Tractor.....\$4,900
- 59 JD 830 PTO- 2 Remotes- Overhauled Engine- Redone.....\$8,500
- 59 JD 830 DE- Overhauled- 80% Tires- Good Tin Redone.....\$8,900
- 36 JD A Unstyled- Runs Good- Easy Restore- Good Tin.....\$2,900
- 35 JD A Unstyled- Good Tires & Tin- Decent Paint.....\$3,400
- 37 JD A Unstyled- Factory Steel- Runs Good.....\$3,500
- 36 JD A Unstyled- Factory Round- Runs Good.....\$3,900
- 51 JD AO Runs- PTO- Needs Restored- No Orchard Dress.....\$1,950
- 51 JD AR Styled- Nicely Painted- New Rear Tires.....\$4,900
- 50 JD AW WF- Fenders- Clean- \$2000 Engine Work Done.....\$3,900
- 38 JD B Unstyled- New Paint- Spokes- Runs Good.....\$3,400
- 37 JD B Unstyled- New Rear Tires- Decent Paint.....\$3,900
- 37 JD B Unstyled- Spokes- Nicely Redone- GD Tin.....\$4,200
- 39 JD D Styled- PTO- Front Spokes- Decent.....\$2,900
- 49 JD D Styled- Runs- As Received.....\$2,900
- 49 JD D Styled- Runs- As Received.....\$2,900
- 41 JD D Styled- Hand Start- Good Tin- Decent.....\$2,900
- 50 JD G Try- Decent Tin- Runs Good- Needs Paint.....\$2,750
- 51 JD G Runs- As Received.....\$2,850
- 48 JD G Good Tin- Runs Good- New Tires- Nicely Redone.....\$4,650
- 38 JD G Unstyled- Good Tires- Good Tin- Runs Good.....\$5,250
- 41 JD G Unstyled- Last Full Year Of Prod.- Nice Unit.....\$5,500
- 51 JD GW WF.....Coming In
- 50 JD M Good Tires- Fair Tin- Runs Good- To Restore.....\$1,750
- JD MT Widefront.....Coming In
- 51 JD MT Clean Tin- Runs- Needs Restored- As Received.....\$1,600
- 49 JD MT Fenders- Weights- Fair Tin- To Restore- Runs.....\$1,850
- 52 JD R.....Coming In
- 54 JD R Last Year- Good Tin- PTO- Hydraulics- Stuck.....\$2,900
- 53 JD R Runs- Needs Restored.....\$3,400
- 51 JD R Overhauled- Good Tin- Repainted- Good Cond.....\$5,300
- 61? MF 98 GM Diesel- Runs Good- Thin Paint.....\$4,500
- 60? MF 98 GM Diesel- Good Running Tractor- Thin Paint.....\$5,000
- 50 MH 55 Diesel- Standard- Good Tin- Stuck.....\$1,750
- 52 MH 55 Diesel- Standard- PS- PTO- Good Tin- Stuck.....\$2,000
- 53 OL 66 Widefront- Fenders- Nice Tin- 2 Remotes.....\$2,000
- 57 OL 880 Diesel- Standard- New Tires- Very Nice.....\$4,900

BIG SALE
ON BIG PLOWS



We have too many
 CASE IH 800 Series
 Flex-Frame Plows in our yard. These are all
 auto-reset, high-clearance 18" furrow plows:

NEW

- 10 bottom NEW \$26,729
DEMO UNIT \$18,995*
 (two to choose from)
- 9 bottom NEW \$24,802
DEMO UNIT \$17,995*
 (two to choose from)

USED

- IH 10 bottom **\$4,995**
- IH 9 bottom **\$5,995**
 (two to choose from)
- CASE IH 9 bottom
\$10,900

* CASH PRICES

MONROE TRACTOR

7941 Orchard Rd., Batavia, NY 14020
 1-800-388-4113
 716-343-8283

I Will Buy Clean Or Odd John Deere's. Buy-Sell-Trade.
 Lots Of Older Sales Literature, Toys And Pedal Tractors For Sale.
 Lots Of Owners Manuals/Parts Book — Call.

LLOYD WENGER

251 S. Race St., Myerstown, Pa. 17067
 717-866-2130 Days 717-866-7147 Evenings