

**VEHICLES FOR SALE**

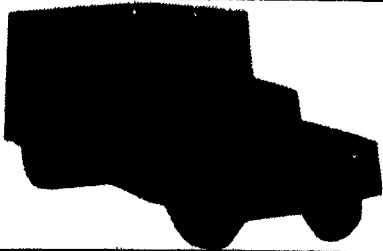
- (1) 1985 Chevy Van
- (1) 1982 Chevy Service with box and rack, HD 1/2 ton, 4 WD
- (1) 1984 Dodge Service with box and rack
- (1) 1987 Ford Ranger with rack, King Cab - 4 WD
- (1) 1991 Dodge with side boxes and rack, 4WD
- (1) 1989 27,000 lbs. Trailer with dual tandem axle

For more information call (717) 265-2392  
After 6 pm, call (717) 265-2960

'88 Chevy Silverado 4x4 Blazer, 350 FI, auto, PS, PB, PW, PDL, cruise, tilt, air, AM-FM stereo, aluminum whls., black & silver, 1 owner, excellent condition, 88,000 miles, \$8,800. 717-733-2873

'88 Ford E150 XLT 8 passenger van, 302 EFI, auto, PB, PS, PW, PDL, cruise, tilt, dual air, AM-FM cassette stereo, red & white, 1 owner, like new, \$8,975. 717-733-2873

'87 Chevy Scottsdale K20, 4x4 Suburban, 350 FI, auto, PS, PB, air w/ladder rack, 25,000 original miles, new radials, excellent condition, \$11,500. 717-733-2873



1972 F750

30000 GVW V8 Gas 5x2, PS, Good Rubber, 25 YD Box, HYD Bulk Head Pushes Load Out Double Rear Doors, Open Top, Haul Silage - Mulch - Sawdust - Etc.

Asking: 2500.<sup>00</sup> Lanc Co.

Call 717-684-3975 Any time.



1993 Ford XL F350 4x4, Crew Cab, 7.3 Diesel, 5 Speed, PS, PB, Air, Cruise, Tilt, AM-FM Cass., 14,000 Miles With Bal. of Factory Warranty, Ex. Cond. \$22,500



1987 Ford XL F250 4x4, 351 Auto, PS, PB, AM-FM With 8600 GVW, 8 Ft. Stake Body Bed, 41,000 Orig. Miles, Green & Tan, 1 Owner. \$8,975

**A&J Auto Sales**

798 E. Main St. Rt. 322 East, Ephrata, PA 17522  
717-733-2873

**KEENS**

SERVICES INC.

**Trailers**

- Sales
  - Service
  - Rentals
  - Leasing
- Lnitz, PA  
(717) 626-5420  
"Since 1963"

**For Sale...**

**VANS**

- 1980 "U" Model Mack, 300 5-speed, tandem.....\$4,200
- 1969 Montone Dump 25' box, 29' frame, recent cylinder work.....\$3,500
- 1987 48'x102" Dropdecks, air ride, excellent condition!.....\$11,000

**JONES GM PARTS CENTER**

IS YOUR

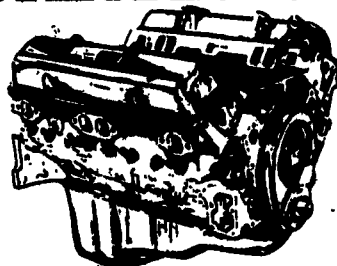
**Goodwrench ENGINE HEADQUARTERS**

GM GOODWRENCH 350 V8 1973-85  
Part Number 10067353

New Engine - Not Rebuilt  
36 Month or 50,000 Mile  
Warranty

**\$1199<sup>00</sup>**

New Engine - No Core Fee



**NEW ENGINE 2.8 V6 #12521438**

**\$1399<sup>00</sup>**

Call 394-0711 for prices on other New or Remanufactured Goodwrench Engines. 2.5 Liter thru 454 cid. Gas and Diesel

Chevrolet - Pontiac Olds Buick Cadillac - GMC

**JONES GM PARTS CENTER**

1335 Manheim Pike, Lancaster, PA 17604

Hours: Mon.-Fri. 7:30-5  
(717) 394-0711



Mr. Goodwrench



**CASH FOR USED DIESEL TRUCKS!**

WE NEED 1/2 TON TO ONE TON:

- FORD DIESELS
- SUPERCABS
- CREW CABS
- DODGE CUMMINGS
- 2WD or 4x4
- DUALIES
- DUMPS
- UTILITY BODY
- FLAT BEDS
- CAB & CHASSIS

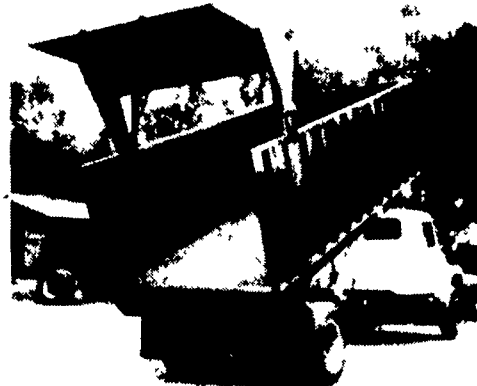
PLEASE! PLEASE! PLEASE!

Before you sell or trade your diesel in somewhere else for LESS, CALL US!

We Pay More For Used Diesel Trucks Than Anyone.

TRY US!

717-949-2000 Ask for **KELLER BROS.** RD 7, Box 405 Lebanon, PA 17042



**READY TO WORK**

1989 Int. S 1954, 32,800 GVW DT 466, 210 HP, PS, AB, AC, 11R22.5 New Tires, 118,000 Miles, Like New w/18' Scott Silage & Grain Body, 2000 Hoist, 7 Gauge Floor And Other Options  
1975 42' Fontaine Drop Deck Flat Trailer, 10x15 Tires...\$3,500

OTHER UNITS AVAILABLE

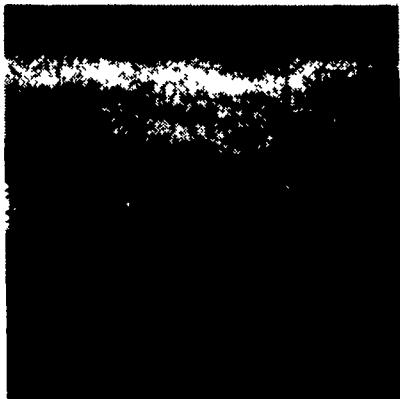
Scott Silage & Grain Bodies In Stock

SUNNY ACRE SALES  
RD #2 Tyrone, PA 16686  
(814) 742-7303

**Huntingdon Equipment**

Rentals Available GOOD USED EQUIPMENT

Huntingdon Valley, PA • 215-672-9667 • 1-800-543-3833 • Eddie



20 Ton P&H Crane 3 Sec. Hyd. Boom mounted on a 1988 F.W.D. both engine gas (new front 89), fleet maintenance.



1985 F-600 8.2 Diesel, Auto, 5 Man Cab, Utility With Rollup Door On Rear, Clean, Low Mileage, 1 of 3.



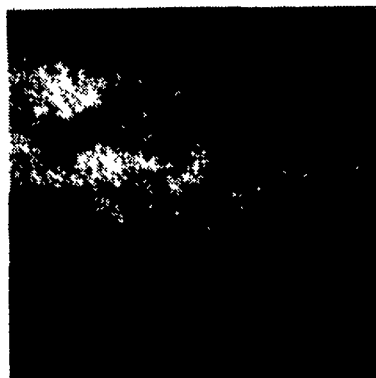
1979 Ford V8 10-Speed, Air, 14,000 Lbs. Boom, 2 Speed Auger, Upper Controls, 4 Outrigger, Dig Hole-Lift-Put Man In Air. This Unit Does It All.



Holan 70' Double Bucket 75' working height mounted on 1981 Western Standard, 6x6 Flatbed, CAT 3208, Auto.



Need a Lift? We Have A Large Selection Of Boom Trucks Up To 14,000 lbs. Cap. Some With Post Diggers.



Bucket Trucks 28' to 65' Gas and Diesel. Call For Details.

**DIGGER DERRICKS/AERIAL BUCKETS/UTILITY EQUIPMENT**

**HOSTETLER CONTRACTOR DUMP TRAILER**



Heavy Duty Tamaqua Dump Body 6 Ton Harsh Truck Hoist 10,000 # GVW, No CDL Required Built to do the job the others can't

10' Model with 36" Front and Rear Gussets and 20" Sides and Tailgate.....\$4,995

12' Model with 30" Front and Rear Gussets and 20" Sides and Tailgate.....\$5,295



**Hostetler Truck Bodies & Trailers**  
Rt. 322 Milroy, PA 17063  
(717) 667-3921