

## Top Brand Names, Low Dollar Steel And Aluminum



Super Panel - 26 Gauge

### 26 & 29 Gauge

- Painted, Galvanized & Galvalume
- Large quantity roofing doors, windows & trim in stock

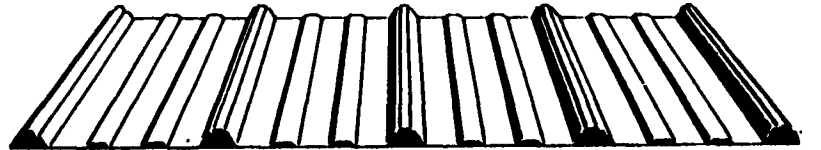
We Delivery Anywhere  
IN  
PA, MD, NJ, DE,  
NY, VA, W VA

Call 1 (800) 964-1550 Anytime (215) 384-5942

Reuben Graber Home: (215) 383-5274

**CALN DOOR & SUPPLY**

## Steel And Aluminum



Specialists in metal roofing and siding. Special in price, quality and service. Please call this number: 1-800-325-1267 Thank you!

### Metal Roofing & Siding Co

987 Valley View Rd., New Holland, PA 17557

(717) 354-2728

## KW Pole Buildings



- Horsebarns • Riding Arenas • Livestock Facilities
- Implement Sheds • Storage Buildings • Garages

★Quality Built, Custom Engineered; Agricultural, Commercial and Residential Buildings.

★20 Yr. Painted Steel Siding & Trims With A Large Selection Of Colors.

★TI-II, Cedar Board & Batten And Vinyl Siding Also Available.

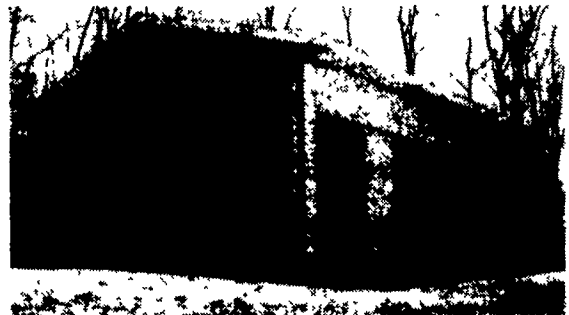
★Custom Designed Dutch Doors & Horse Stalls.

Call Us For A Free Estimate - Fully Insured

### KW Construction

Myerstown, PA

(717) 933-8294



## POLE BUILDINGS

CUSTOM DESIGNED & ENGINEERED

- COMMERCIAL  AGRICULTURAL  RESIDENTIAL
- HORSE BARNs • ARENAS • GARAGES
- IMPLEMENT SHEDS

BYLER  
CONSTRUCTION  
Dennis E. Byler

FREE ESTIMATES  
**717-836-6302**

# GLENWOOD METAL FORMING

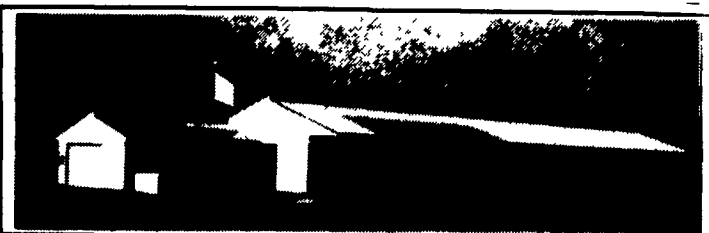
809 Glenwood Dr., Ephrata, PA 17522

FAX

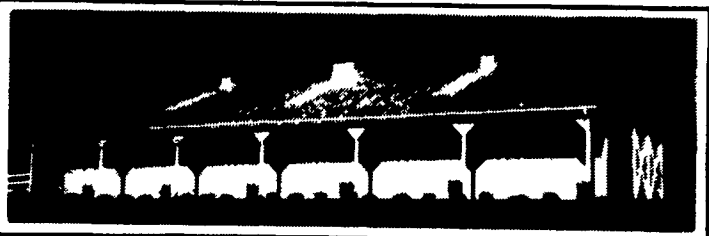
717-733-9590 - 1-800-582-9956 - 717-738-4988

## AGRI-INC.

Custom Built Farm Buildings  
Designed To Your Needs



HEIFER AND CALF RAISING FACILITY



HORSE STALL BARN

Let Our Experience Work For You

- Dairy Complexes And Replacement Stock Facilities
- Horse Stall Barns And Riding Arenas
- Workshop And Machinery Storage Buildings
- Timber Column Buildings For Light Commercial



**AGRI-INC.** The Construction Professionals

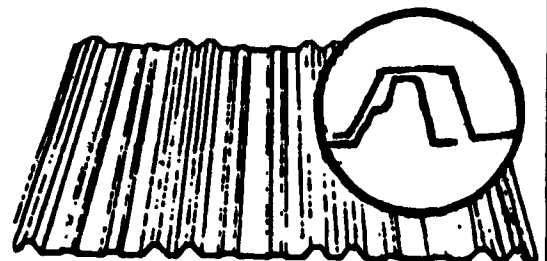
151 E. Farmersville Rd., Ephrata, PA 17522  
(717) 354-4271

Serving The Agricultural Industry For Over 25 Years



## MANUFACTURERS OF METAL ROOFING AND SIDING PANELS

WITH CUT TO  
LENGTH LINE  
IN 36" WIDTH



- 29 Ga. Galvanized
- 26 Ga. Galvalume
- .024 Mill Finish Alum.

- 29 Ga. Painted
- 26 Ga. White
- 29 Ga. 304 Stainless Steel

### 24 Ga. Standing Seam Roofing

In Galvanized - Galvalume & Painted  
Commercial & Residential Panels

5 & 6" K-Style Alum. Seamless Gutters

- Pre-Hung Thermo Doors
- Agri Built Windows
- Ridgeolators
- Roofing Nails & Screws
- Sliding Door Track Trolley & Hardware
- Ridge Vents