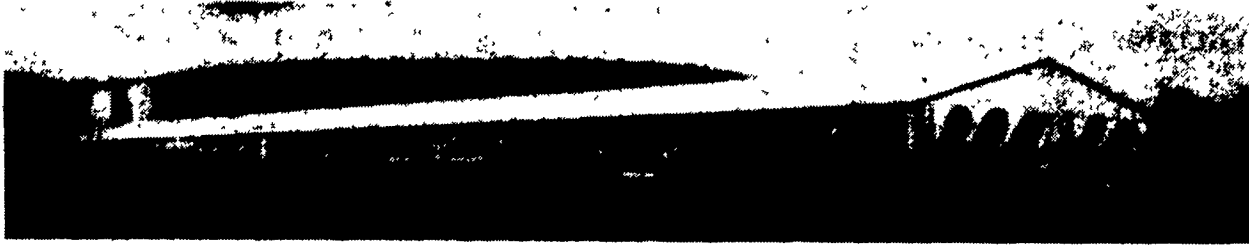
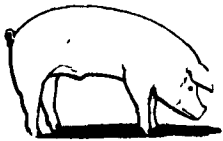


FINISHING BARNs NEEDED - AVAILABLE CONTRACTS

Farmer Boy Ag Offers The Latest Concept In Hog Finishing Building Design!



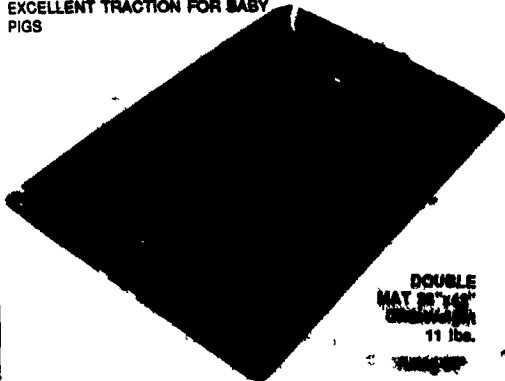
Consider A New Hog Unit For Added Cash Flow.
Call Farmer Boy Ag At 717-866-7565



CREEP PAD

PIGS STAY WARM, DRY AND COMFORTABLE ON THIS BLACK RUBBER CREEP MAT. IT ABSORBS RADIANT HEAT WHILE BLOCKING DRAFTS THROUGH FLOORS AND PROVIDES INSULATION ITS FLEXIBILITY PREVENTS DAMAGE WHEN KICKED BY THE SOW, WHILE TAPS LOCK IT UNDER THE CREEP DIVIDER. THE INEXPENSIVE MAT CLEANS EASILY, YET THE SOFT, RIBBED SURFACE PROVIDES EXCELLENT TRACTION FOR BABY PIGS

WE MAKE YOUR WORK CLEANER, FASTER, AND HEALTHIER



DOUBLE MAT 24" x 48" 11 lbs.

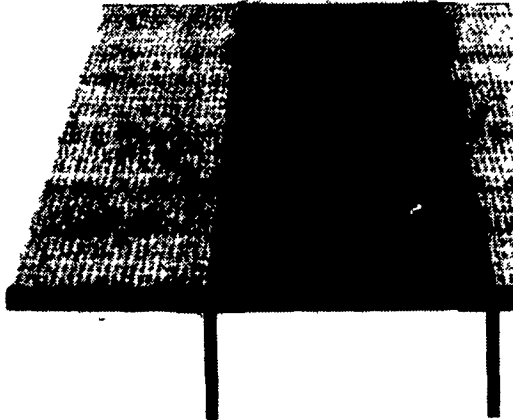
DOUBLE L GROUP LTD. WEAN HEALTHIER LITTERS AND POTECT YOUR SOWS WITH DOUBLE L'S COMBINATION FLOORING SYSTEM

DOUBLE L'S SCHONLAU/FILTER-EFZE FLOORING SOLUTION

For your sows, Double L/Schonlau cast iron provides a slip-resistant, durable surface that safeguards against teat and foot injuries and shoulder abrasions. It allows superior manure filtration, cleaning and disinfecting, and will not harbor diseases. With Double L/Schonlau cast iron, you have a proven farrowing floor with an unmatched warranty and service life that gives your sows their best chances for maximum production. For your piglets, Double L/Filter-Eeze provides a warm creep, nursery, and grower flooring line which is disease resistant and helps combat scours, the num-

ber one killer of baby pigs. It cleans extremely well and doesn't rob needed body heat, promoting faster gains on less feed.

Double L Group Ltd. knows of no better flooring combination worldwide that will outperform or give you a better return on your investment than Double L/Schonlau Cast Iron Sow Slats and Filter-Eeze Creep Slats.



Our tested and proven system treats the sows and her piglets differently, because their needs are different.

PUMP OUT PIT FAN



Many manure storage pits have been constructed without providing for ventilation of the pit, particularly in buildings constructed several years ago when pit storage was first popular.

A non-ventilated pit results in a build-up of harmful, caustic gases, such as carbon dioxide, hydrogen sulfide, methane, ammonia and mercaptans.

Hydrogen sulfide and carbon dioxide are heavier than air and, as the level of pit waste rises closer to the slats, the gases are forced closer to the animals. Results of inhaling these gases may be deep, fast breathing from CO₂. Hydrogen sulfide is one of the most toxic gases to animals and humans associated with liquid manure storage. This gas can cause severe irritation to the eyes and respiratory system and sometimes can result in death.

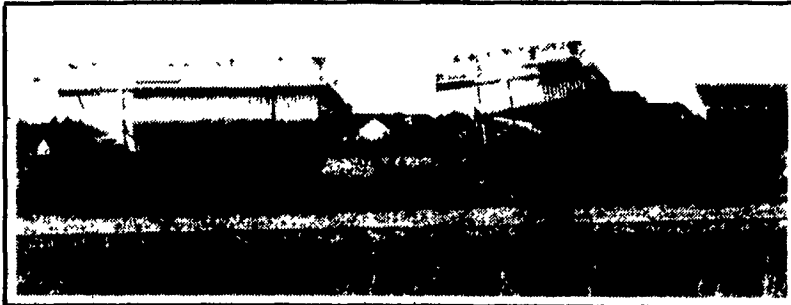
SPECIFICATIONS

FAN SIZE	FAN MODEL	MOTOR H.P.	PROP RPM	0	05
8"	POPF-8	1/15	3400	565	570
10"	POPF-10	1/8	3400	1155	1140

SEE US FOR YOUR VENTILATION NEEDS

QUALITY BINS

We Assemble, Deliver & Set-Up Bins On Your Farm



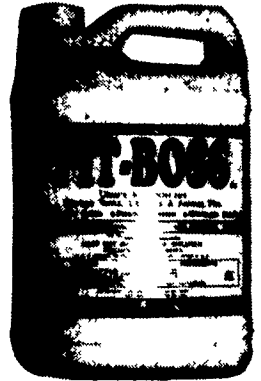
RENCO PREG-TONE II



Swine breeders: Improve your efficiency by detecting pregnancy fast and early.

NEW PIT-BOSS™

Pit Additive To Reduce Pit Odor & Pit Solids

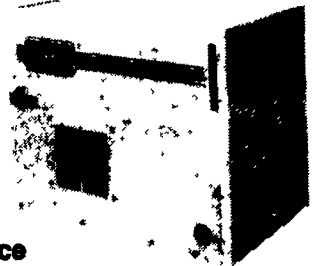


sunne controls

The Sunne TF115 Thermostat Has A Sealed Molded Plastic Case With All Exposed Metal Parts Of Stainless Steel, Intended For Applications That Need A Rugged Weatherproof Type Control Suitable For Either Heating Control Or Cooling Control

Agricultural Heaters

with Hot Surface Ignition



- Safety
- Quality
- Durability
- Performance

Dwyer PORTABLE STATIC-MONITORS

MARK II MOLDED PLASTIC AIR FILTER GAGES

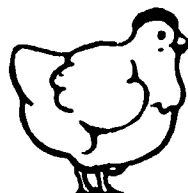
COMPACT, ECONOMY PRICED MOLDED PLASTIC GAGES

ACCURATE TO ±3% OF FULL SCALE

\$19.95

Mark II Model No. 2 molded plastic manometer

ATTENTION POULTRYMEN!



We Now Have A Large Supply Of 36" and 48" Wide - 30 Weight Kraft Paper \$25.00 Per Roll 36"

Full Line Of Parts In Stock For Your Poultry And Hog Needs

Hours: M-F 7:00-5:00; Sat. 7:30-11:30

Swine & Poultry Systems Specialists

FARMER BOY AG.

410 E. LINCOLN AVE. (RT. 422)

MYERSTOWN, PA 17067

INC.

PH. 717-866-7565

10-16

Check Our Warehouse Prices

WE SHIP UPS

SEE JAY OR PAUL FOR YOUR



JAY ZIMMERMAN - Sales

PARTS AND EQUIPMENT NEEDS



PAUL HIGH - Sales