

Rabies, Quarantine, Rules Do Not Block Kerra From Manheim Farm Show Competition



Rabies, quarantine, and contest rules almost kept this 12-year-old from entering Lead Line competition at the Manheim Farm Show. When Kerra Allen placed first, she gave her grandmother Carol Borry a hug.

(Continued from Page B12)

Second place went to Angie Erb of Elizabethtown. The 17-year-old is an FFA member at Lancaster Mennonite High School. She wore a knit sweater and wool skirt while her sheep Frisky wore a coordinating teal blue bow tie. Angie, the daughter of Richard and Grace Erb, had placed first in last year's competition and has accumulated several other ribbons in past competitions.

Third place went to Sarah Zurin, 12. She led her Dorset Lizzie, who although beautiful had a mind of her own and did not appreciate walking around the show ring. Sarah wore a multi-colored sweater and navy skirt. She is the daughter of Gary and Judy Zurin of Mt. Joy and a seventh grader at Manheim Junior High School.

Judges for the Lead Line were Mary Alice Fyock, a free-lance home economist, and Ken Rutt, a Hampshire breeder.

While the first place win definitely brightened Kerra's outlook, she still has some hurdles to cross to accomplish her plans for the Manheim Livestock Auction. Kerra is the girl who last year donated the earnings from her sheep to Clare House, a temporary shelter for homeless women and children.

About \$2,000 was raised at the auction, and since then, people who have read news reports of the story have donated almost \$9,000 to Clare House. Kerra wanted to make that \$10,000 by selling her market lamb this year at the auction. Now the quarantine prevents her from selling the animal.

Although Farm Show rules state that all market sheep must be owned by June 30 of this year, the officials have made an exception in this case. They are allowing Kerra to sell a sheep that someone is giving her.

On Monday, Kerra was unsure how the sheep would perform in the show ring but she was optimistic that her goal can be reached.

A conglomerate bid for her lamb was being organized by Tom Drumm at (717) 627-0443. Although the sale will be over by the time this paper is delivered, contributions to Clare House may still be made by send a check to 50 A South Broad St., Lititz, PA 17543.

The quarantine affects many other areas of the Allens' life. At several other county fairs, Kerra has shown a ewe that has been undefeated in its breed. She planned to take it to the Pennsylvania Farm Show, but the Allen farm will still be under quarantine in

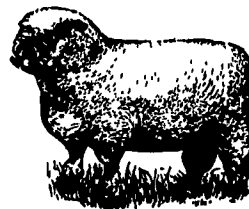
January.

The Allens are also well known for the Chincoteague ponies they raise on their farm. These were to be used to raise funds for several non-profit organizations by offering kids pony rides at several events. That too, will not be allowed under quarantine.

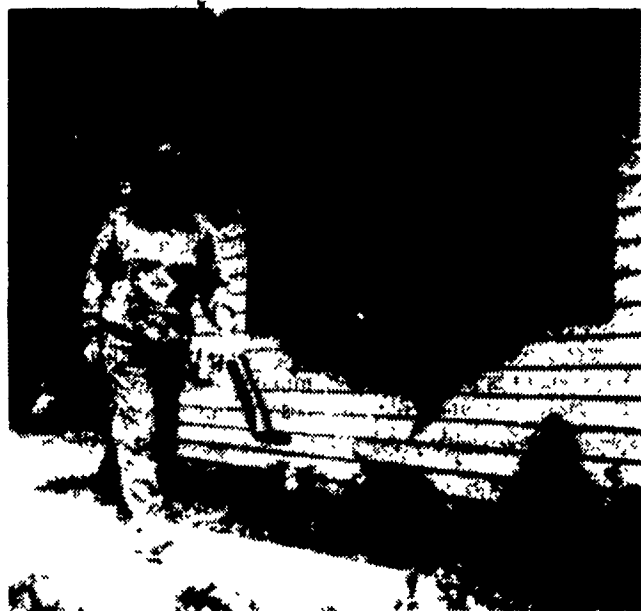
Although the dog had a rabies shot, none of the barn cats, sheep, or ponies have had shots. The dog was given a booster shot and the other animals will be watched closely for any evidence of the deadly disease.

"Of the more than 9,000 things that could go wrong, the idea of rabies never entered our minds," said mother Kendy. "We don't understand why this happened but we believe that God works all things together for good."

Kerra agreed. On Monday night at the Manheim Farm Show, things were definitely turning out much better than she expected for the quarantined farm family.



STIHL®
Get Blown Away with Stihl Power!



The Stihl BG-72 only \$169.95!

STIHL®

Register to win the New! Stihl 029 Chain Saw at these participating dealers:

Bechtelsville
PASSMORE SERVICE
CENTER, INC.
RD 1, Rt. 100
215-367-9084

Ephrata, Hershey
HOLLINGER'S LAWN &
GARDEN EQUIP.
Ephrata, PA 717-738-1131
717-656-2710
Hershey, PA 717-533-4060

Ono
SHUEY'S SALES
& SERVICE
Jonestown Rd.
717-865-4915

Dallastown
TRI-BORO
CONCRETE, INC.
435 Locust St.
717-246-3095
1-800-832-9018

Gap
GAP POWER
EQUIPMENT
Corner of Rt. 30 & Rt. 807
717-442-8870

Ronks
A & B SALES
& SERVICE
370 Newport Road
2 Miles South of Rt. 23
Along 772 Thru Monterey

East Earl
GOODS LAWN
& GARDEN CENTER
Route 23
717-354-4026 Ext. 34

Elizabethtown
MESSICK FARM
EQUIPMENT, INC.
Rheems Exit-Rt. 283
Elizabethtown, PA
717-367-1319, 717-653-8867

Hamburg
SHARTLESVILLE
FARM SERVICE
RD 1, Box 1392
215-488-1025

Shippensburg
LEINBACH
FARM EQUIP.
1120 Ritner Hwy.
717-532-5511

Elm/Lebanon
BOMBERGER'S LAWN
& GARDEN
Elm: 717-864-4863
Lebanon: 717-272-4155

Jonestown
BLUE MOUNTAIN
ENTERPRISES, INC.
Rt. 72 South
717-865-2994

Tamaqua
CHARLES S.
SNYDER, INC.
RD 3
717-388-5945

Ephrata
WES STAUFFER
ENGINES & EQUIPMENT
23 Pleasant Valley Rd.
717-738-4218

Mverstown
EBLING LAWN &
GARDEN SERVICE
608 E. Lincoln Ave.
717-866-6720

Whiteford MD
ENFIELD
EQUIPMENT INC.
720 Wheeler School Rd.
301-879-5090

DISTRIBUTED BY KEYSTONE STIHL

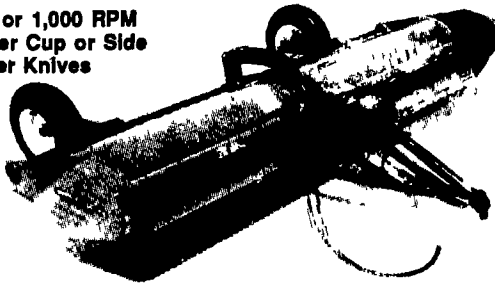
ROLLING ON...IN THE 90's



MEETS THE CHALLENGE

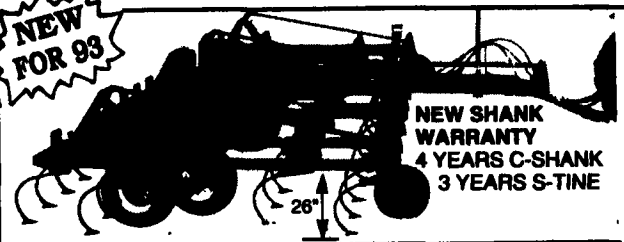
When You Buy A **Brillion**
You Get The Best

540 or 1,000 RPM
Either Cup or Side
Slicer Knives



BRILLION FLAIL SHREDDERS keep going when others stop! One of the most important features is that you get the heaviest gearbox on the market with this machine. 12 & 15 foot.

NEW FOR 93

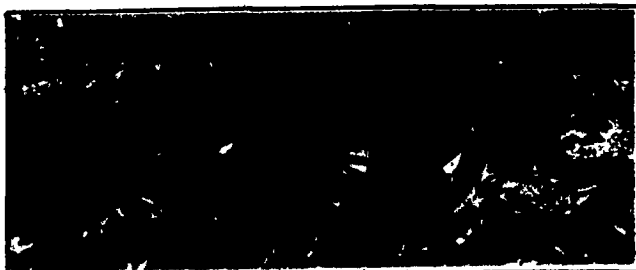


HFC FIELD CULTIVATORS

• 16 1/2 Ft. to 31 1/2 Ft.

HEAVY RESIDUE...NO PROBLEM

Five rows of shanks and 28" of underframe clearance makes working heavy residue...no problem. True 6" shank spacing means leveler fields, better chemical incorporation, and better seedbeds. Featuring a newly designed C-shank assembly. Brillion started with a "bulked up" ductile iron shank bracket, added a hardened steel bushing and grease zerk. The result is extended shank life guaranteed by Brillion's new shank warranty. Don't compromise; See your Brillion Dealer today.



SOIL BUILDERS are a primary conservation tool that breaks up plow pan to absorb moisture and blends surface residue into the soil with enough residue left on top to control wind and water erosion. 5-13 Shank.

We have a size to fit your operation...stop in and we'll talk.

PENNSYLVANIA

Adamstown
ADAMSTOWN
EQUIP. INC.

Bechtelsville
MILLER
EQUIP. CO.

Berwick
C.H. RINEHIMER
& SONS

Carlisle
GUTSHALL'S, INC.

Dover
GEORGE N.
GROSS, INC.

Easton
GEORGE V.
SEIPLE

Elizabethtown
MESSICK FARM
EQUIPMENT CO.

Intercourse
C.B. HOOBER
& SON

Lancaster
LANDIS
BROTHERS, INC.

MARYLAND

Frederick
CERESVILLE FORD
NEW HOLLAND

NEW JERSEY

Bridgeton
LESLIE FOGG

Elmer
POLE TAVERN
EQUIP.
SALES CORP

Columbus
REED BROTHERS
EQUIPMENT

Fairfield
CALDWELL
TRACTOR &
EQUIPMENT

ROLLING ON...IN THE 90's



MEETS THE CHALLENGE