

Overall Champion Sheep At Manheim

Lancaster Farming, Saturday, October 9, 1988-A46

(Continued from Page A44) and down a back road of Litz. During the first few walks, the champion sheep was stubborn and uncooperative. The Zieglers

recalled they needed to load it in a wagon when it refused to walk the first time. After that, Brandon trained the sheep to walk by pulling, pushing, and tugging. By

show time, the no name sheep was cooperative and well muscled from its twice daily walks and the ramps they ran up and down.

This was the second year that Brandon entered the competition. He said that he didn't do so well last year. His brother Corby in his first year of showing this year did quite well. His sale lamb placed first in his class and was named the lightweight champion.

Corby even took a second-place win in junior showmanship. Brandon was third to Ryan Donough who placed first in that division. Ryan, 9, also the champion lightweight market lamb, the reserve heavyweight, which was named reserved market lamb, reserve champion pair, and the reserve lightweight sale lamb. His brother Travis showed a heavyweight sale lamb that took second place to Brandon's lamb in the class but went on to be named reserve heavyweight and reserve sale champion. The Donoughs are from Manheim.

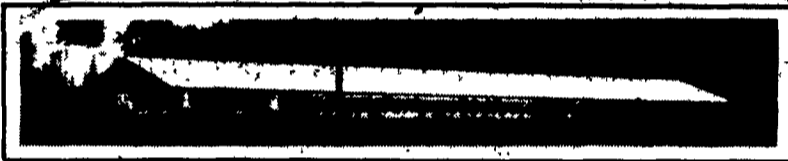
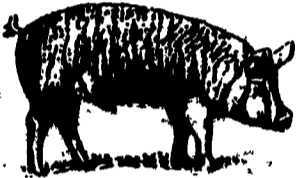
In intermediate showmanship, (Turn to Page A47)



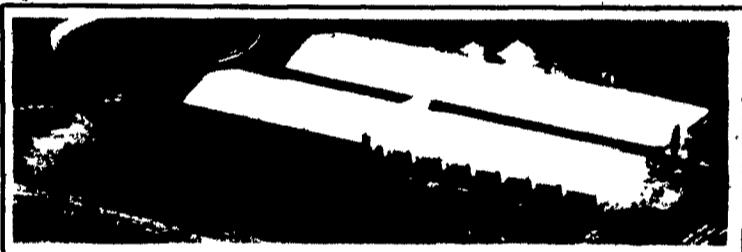
In the last county fair of the season, showmanship champions, from left, are Ryan Donough, junior division; Keith Bollinger, intermediate division; and Wendell Landis, senior division.



Undeclared in market lamb competition, Lisa Reiff holds the seventh trophy she collected at county fairs this season. Ryan Donough holds the reserve champion market lamb.



2000 Head Finisher
1200 Sow Feeder Pig Unit



FARM INCOME SPECIALISTS

Tri-County can assist you in planning a facility to meet your needs including cash flows, production contracts, financing, nutrient management planning and permits. We offer top quality at an affordable price.

DESIGN AND CONSTRUCTION

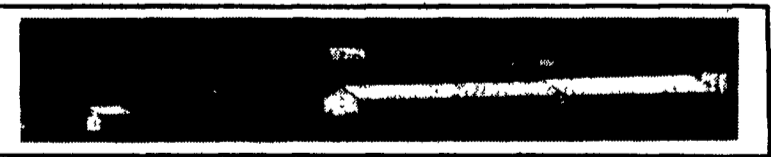
Computerized estimating and drafting for all your construction and equipment needs. Renovations and new construction packages - large and small. Tri-County's experienced staff can design a building to meet your needs. Check our prices on concrete manure tanks.

SERVICE

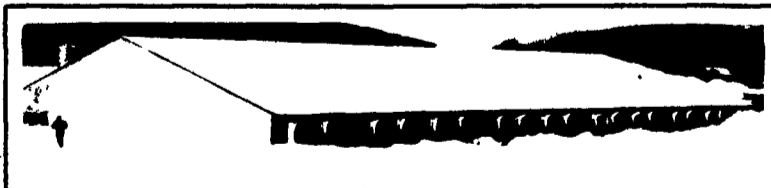
We offer a specialized staff to handle all your repair and service needs. Emergency repairs are available 24 hours a day.

PARTS

We inventory a large selection of parts available for immediate pickup or U.P.S. delivery such as ventilation, feeding, watering, penning, flooring, specialized building materials and much more.



250 SOW FEEDER PIG UNIT



3000 HEAD 5 ROOM FINISHER

Call Tri-County for all your swine, poultry & livestock facility needs. We offer a complete line of quality products and services for today's producer at a price you can afford.

TRI-COUNTY
CONFINEMENT SYSTEMS INC.

Hours: 8:00 AM - 5:00 PM
We Sell UPS DAILY



Let's Go to Zimmerman's This Week!

Fri., Oct. 15th - 7-9 PM
Live Music By BLUE MOUNTAIN EXPRESS

Hot Dog on roll 35¢ w/Graybill's Drink (All Week)

Buy A Pumpkin Get One FREE!

51 Valuable Prizes

SCHOOLHOUSE CLOCK Made by Hamilton. Value \$250 Register your name on each store visit for drawing November 13. Winners Will Be Notified
25 TURKEYS
25 ICE CREAM

KEROSENE 79¢ gal. from our pump

AUTUMN FRUITS Good Prices From The Bulk Bin APPLES - Red and Yellow Delicious Smokehouse, Pumpkins, Gourds, Squash, Colorful Bittersweet Branches, Indian Corn, etc., Bartlett Pears, Concord Grapes, etc.
• 100# sacks Gran. Sugar
• Homemade Paring Knives

LP-GAS

Tank truck delivery of home heating OILS FAX SERVICE We can send or receive your message. Full info at office.

W.L. Zimmerman & Sons
(717) 768-8291 INTERCOURSE, PA Thurs. Till 8, Fri. Till 9