

**New Wilmington Livestock Auction**

New Wilmington, Pa.  
Monday, October 4, 1993  
Report Supplied by PDA

CATTLE 257.. PDA .. Supply included 92 head feeder cattle . sl. cows .75 to 3.25 lower. STEERS: couple Choice 1330 & 1540 lbs. 66.75 & 67.75, couple Select 62.00 & 65.75, few Standard 55.00-58.00. HEIFERS: few Select 51.75-55.00. COWS: Breaking Utility and Commercial 44.25-47.75, couple 49.00, Cutter and Bon. Utility 42.00-47.25, couple 48.25, Canner and Low Cutter 36.50-41.75. Shells down to 30.00. BULLOCKS: few Select 965/1100 lbs. 54.00-56.25. BULLS: Yield Grade No. 1 1655 lbs. 62.00, No. 2 1030/2040 lbs. 51.00-60.50. FEEDER CATTLE: Steers: few Large Frame No. 1 270/335 lbs. 87.00-97.00, Medium Frame No. 1 420/510 lbs. 71.00-83.00, few Medium Frame No. 1 640/910 lbs. 60.00-65.50. Heifers: few Medium Frame No. 1 730/880 lbs. 52.00-57.00, Medium Frame No. 1 270/685 lbs. 55.00-77.00

mostly 63.00-68.00, Large Frame No. 2 385/920 lbs. 47.75-55.50. Bulls: Medium Frame No. 1 265/720 lbs. 69.00-74.00, one 83.00.

CALVES 234..VEALERS: Standard and Good 60/95 lbs. 37.00-50.00, Utility 40/60 lbs. 18.00-30.00. FARM CALVES: No. 1 Holstein bulls 110/135 lbs. 136.00-150.00, 90/105 lbs. 157.50-167.00, 80/85 lbs. 120.50-147.50, No. 2 92/110 lbs. 80.00-127.50; No. 1 Holstein heifers 90/120 lbs. 197.50-212.50, No. 2 75/115 lbs. 92.50-153.00. Beef cross 75/110 lbs. bulls and heifers 125.00-165.00.

HOGS 232..Barrows and gilts 1.00 to 1.50 higher. BARROWS AND GILTS: US 1-2 220/260 lbs. 48.50-49.35, US 1-3 210/260 lbs. 47.25-48.00, few 1-3 180/200 lbs. 45.25-46.00. SOWS: US 1-3 335/625 lbs. 36.00-39.00, couple 41.50, 2-3 440/785 lbs. 36.00-38.75, Medium 300/425 lbs. 34.50-39.00. BOARS: few 360/840 lbs. 27.00-29.50, few 240/270 lbs. 32.00-36.00.

FEEDER PIGS 180..US 1-3 10/15 lbs. 5.00-11.00, 25/50 lbs. 15.00-21.00.-- per head.

SHEEP 135...Spring sl. Lambs: High

Choice and Prime 80/115 lbs. 62.50-68.00, Choice 70/115 lbs. 50.00-58.00, 50/70 lbs. 61.00-69.00, one 75.00. Slaughter Sheep: 20.00-29.00, one 35.00.

GOATS 10...One Large 40.00, few Medium 28.00-38.00, few Small 22.50-26.00....all per head.

**Leesport Livestock Auction**

Leesport, Pa.

Wednesday, October 6, 1993

Report Supplied by PDA

CATTLE 271.. PDA . Supply included 50 sl. steers & heifers and 57 feeder cattle ..Compared with last Wednesday's market: sl. steers about steady; sl. cows 1.00 to 1.50 lower. STEERS: few Choice 1200/1400 lbs. 67.00-72.75, few Select 64.00-67.25. HOLSTEINS: few Select to Low Choice 60.75-63.75. HEIFERS: few Choice 64.25-67.00, few Select 59.00-64.25. COWS: Breaking Utility and Commercial 44.00-46.50, couple to 48.25, Cutter and Boning Utility 44.00-47.75, couple to 49.00, Canner & low Cutter 38.00-44.75. Shells down to 30.00. BULLOCKS: few Select and Choice 61.25-63.50. BULLS: Yield Grade No. 1 950/1800 lbs. 57.75-62.50, few No. 2 920/1150 lbs. 48.00-56.25. FEEDER CATTLE: Steers: few Large Frame No. 1 450/650 lbs. 70.00-80.00. Heifers: few Medium Frame No. 1 300/450 lbs. 56.00-66.00. Bulls: few

Medium Frame No. 1 300/450 lbs. 65.00-80.00.

CALVES 140..VEALERS: Standard and Good 75/100 lbs. 50.00-69.00, few Utility 60/85 lbs. 40.00-50.00. RETURNED TO FARM: No. 1 Holstein Bulls 90/130 lbs. 150.00-180.00, No. 2 85/125 lbs. 90.00-150.00; one No. 1 Holstein heifers 100 lbs. 180.00. Few Beef cross 75/105 lbs. bulls and heifers 100.00-165.00.

HOGS 228..Barrows and gilts about steady, Sows 1.50 higher. BARROWS AND GILTS: US No. 1-2 230/250 lbs. 47.10-49.25, few lots US 1-3 230/240 lbs. 45.00-46.60, one lot US No. 2-3 275 lbs. 40.00, few US No. 1-3 180/195 lbs. 35.00. SOWS: US No. 1-3 350/675 lbs. 37.00-42.00. BOARS: 31.00-35.50.

FEEDER PIGS 189..US No. 1-3 20/21 lbs. 100.00-115.00.-- per cwt. US No. 1-3 30/50 lbs. 56.00-75.00.... per head.

SHEEP 48...Choice 80/125 lbs. Woolled sl. lambs 50.00-60.00, few 55/65 lbs. 75.00-77.00, two head 35 lbs. 140.00. Slaughter sheep: 20.00-29.00.

GOATS 11...Few Large 39.00-44.00, few Medium 22.00-35.00. --- all per head.

**Carlisle Livestock Market**

Carlisle, Pa.

Tuesday, October 5, 1993

Report Supplied by Auction

SLAUGHTER HOLSTEIN STEERS: SELECT AND CHOICE 62.00-65.75.

SLAUGHTER HOLSTEIN HEIFERS: TO 58.00.

SLAUGHTER COWS: GOOD DEMAND! BREAKING UTILITY AND COMMERCIAL 47.75-50.00; CUTTER AND BONING UTILITY 46.00-50.00; CANNER AND LOW CUTTER 40.00-46.00; BIG MIDDLE 43.00-47.50; SHELLY 39.50 AND DOWN.

SLAUGHTER BULLS: 51.00-58.00.

FEEDER CATTLE: ACTIVE! FEEDER STEERS 300-550 LBS. MEDIUM AND LARGE #1 90.00-105.00; MEDIUM AND LARGE #2 76.00-89.00; HOLSTEINS 800-950 LBS. 55.00-70.50.

FEEDER HEIFERS: 350-750 LBS. MEDIUM AND LARGE #1 90.00-101.00; MEDIUM AND LARGE #2 71.00-83.00.

FEEDER BULLS: 400-800 LBS. HOLSTEINS 60.00-74.00.

VEAL CALVES: STRONG DEMAND FOR BULLS AND HEIFERS RETURNING TO THE FARM, CHOICE

90.00-98.00; STANDARD AND GOOD 60.00-85.00.

HOLSTEIN FARM BULLS: OVER 95 LBS. 170.00-187.50; UNDER 95 LBS. TO 175.00.

HOLSTEIN FARM HEIFERS: 90-120 LBS. 210.00-239.00.

HOGS: BARROWS AND GILTS US#1-3 220-270 LBS. 46.50-47.50; OVER 300 LBS. 35.00-40.00; #2&4 ALL WEIGHTS 44.00-46.00.

SOWS: ACTIVE: OVER 450 LBS. 37.00-39.75; UNDER 450 LBS. 36.00-37.50; #2&4 ALL WEIGHTS 30.00-35.00.

BOARS: 350-750 LBS. 28.00-30.00. SHEEP: 17.00-26.00.

LAMBS: CHOICE 35-50 LBS. 81.00-95.00; CHOICE 75-100 LBS. 66.00-71.00; GOOD 40-90 LBS. 67.50-76.00; GOOD 80-110 LBS. 61.00-65.00.

GOATS: BY THE HEAD, LARGE 75.00-105.00; S/M/MED/KIDS 75.00-60.00.

**Valley Stockyards**

Athens, Pa.

Monday, October 4, 1993

Report supplied by auction

HOLSTEIN HEIFER CALVES TOP 190.00.

VEAL CALVES TO 88.00.

VEALER BULL CALVES TO 180.00.

SLAUGHTER CALVES 70.00 AND DOWN.

GRASSERS & FEEDERS 45.00-75.00.

LAMBS 45.00-58.00.

SHEEP TO 34.00.

HOGS, 200-250, TOP 51.00.

SOWS TO 32.00.

BOARS TO 30.00.

PIGS EACH TO 34.00.

HEIFERS 45.00-56.50.

STEERS MEDIUM TO 56.50.

FEEDER STEERS 55.00-84.00.

BULLS 48.00-58.00.

GOOD COWS 46.00-48.00, TOP 50.00.

COWS MEDIUM 42.00-45.00.

COWS POOR OR SMALL 38.00 AND DOWN.

CATTLE MARKET SOME EASIER.

CALF MARKET STEADY.

HORSES SMALL TO 300.00.

GOATS TO 77.50.

SALE ACTIVE, A LOT OF COWS AROUND.

**Breathe Clean, Cool Powered Air**



Combined respiratory, head, eye and face protection creates a personal mini-environment of clean air for you to work. You can do more work in less time because you take fewer breaks. By increasing productivity you

increase profit - not to mention comfort!

- Use it for:
- Ragweed and other pollens in field mowing
  - Making hay - especially round bales
  - Combining
  - Handling poultry
  - Cleaning chicken houses

Similar products available to protect you in your orchard spraying and to control odor problems.

Call 1-800-234-7417 for more information

**S.E.I. ENVIRONMENTAL SUPPLY**

21515 Peachtree Road, PO Box 368, Barnesville, MD 20838  
301-972-7417 • FAX 301-916-3517 • Toll Free 1-800-234-7417

VISA/Mastercard Accepted

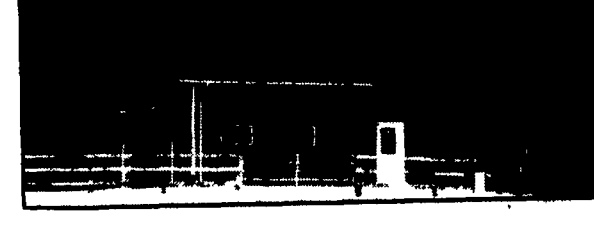
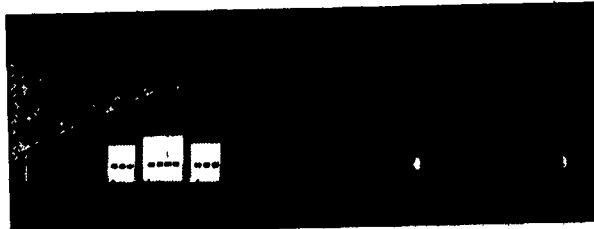
**KEN CLUGSTON**  
(717) 665-6775

**CRAFT-BILT CONSTRUCTION INC.**

FARM-HOME BUILDING  
1242 Broneman Road  
MANHEIM, PA 17545  
PH: (717) 665-4372

BUILDING & REMODELING FOR —  
DAIRY SWINE BEEF RESIDENTIAL POLE BUILDINGS STORAGE

**A Bushelful Of Sizes And Styles.**



Choose from a wide range of standard or custom Lester wood frame agricultural buildings. Each features value engineered Uni-Frame® construction. Top quality materials. The industry's leading warranty.

And the support of the nation's leading building company. Reap the benefits of quality, affordable storage. Call your local Lester dealer or 1-800-826-4439 today.

**Contact One Of The Dealers Below For A Quote Today...**

THE BRAND THAT MAKES THE DIFFERENCE.



LESTER BUILDING SYSTEMS  
A Division of Butler Manufacturing Company

- PENNSYLVANIA**
- COUNTRY CONSTRUCTION**  
Montoursville  
(717) 368-1718
  - DELAWARE VALLEY STRUCTURES, INC.**  
West Chester  
(215) 344-7242  
(800) 472-1503
  - FOUR COUNTIES CONTRACTORS, INC.**  
Coalport  
(814) 672-5751
  - LANCASTER DAIRY FARM AUTOMATION**  
Litz  
(717) 627-4824
  - LEBANON BUILDING SYSTEMS, INC.**  
Lebanon  
(717) 372-4448
  - NAZARETH BUILDING SYSTEMS**  
Nazareth  
(215) 837-7700
  - UMBAUGH BUILDINGS, INC.**  
New Oxford  
1-800-222-9047
  - VALLEY VIEW CONSTRUCTION**  
Morgantown  
(215) 286-8407
  - H.R. WEAVER BUILDING SYSTEMS**  
Annville  
(717) 838-3753
  - WISE CONSTRUCTION GROUP, INC.**  
Centre Hall  
(814) 384-1000
- MARYLAND**
- GOMPF CONSTRUCTION**  
Jarrettsville  
(410) 892-6360
  - RASCHE BROS. CONTRACTORS**  
Taneytown  
(410) 768-4467
  - REYNOLDS & YELLOTT**  
Pfeifers town  
(410) 838-1848
  - RIVERS EDGE CONSTRUCTION, INC.**  
Chattanooga  
(410) 648-8878
- NEW JERSEY**
- MATTSON ENTERPRISES, INC.**  
Mt. Holly  
(800) 281-3800  
(800) 513-3800
  - RUETER CONSTRUCTION CO.**  
Bernardsville  
(908) 798-8024