

**N.E. Chicken**

**Parts**

EDISON, NJ  
 SEPTEMBER 29, 1993  
 NORTHEAST BROILER/FRYER PARTS - PART I FEDERAL-STATE  
 Trucklot buying interest was fairly light with most buyers still cautious on most items. Supplies of boneless skinless were in balanced with immediate needs and close going into next week. Trading was reported at lower trending prices. The undertone was steadier than prior day. Line run breasts were readily available for the light and cautious buying interest. Prices continued to trend lower and offerings were slow to clear. Leg quarters were in close balance with current needs with some interest for next week not covered yet. The undertone was fully steady. Wings were difficult to sell, prices trended lower.  
 PRICES PAID PER POUND, ICE PACKED AND CO2 PACKED BROILER/FRYER PARTS, DELIVERED TO FIRST RECEIVERS IN POOL TRUCKLOT AND TRUCKLOT QUANTITIES.

**ITEM CURRENT NEGOTIATED TRADING\***

BREAST - B/S (W & W/O TENDERS) 200 BREAST - WITH RIBS 89-90  
 BREAST - LINE RUN 89 LEGS 34-35  
 LEG QUARTERS (BULK) 25 THIGHS 31-32  
 DRUMSTICKS 32 WINGS 40 BACKS AND NECKS (STRIPPED) 10-12  
 LIVERS (5 POUND TUBS) 25-30 GIZZARDS (HEARTS) 30

INCLUDES NEW YORK CITY METROPOLITAN AREA, NORTHERN NEW JERSEY, MASSACHUSETTS, CONNECTICUT, RHODE ISLAND, AND PENNSYLVANIA (NORTHEAST OF HARRISBURG). \* TODAY'S NEGOTIATED SALES AS OF 11:30 A.M.

PREPARED: 29-SEP-93 11:35 AM E RPP

**Hackettstown Poultry & Egg**

Hackettstown, N.J.

Report Supplied by Auction

Tuesday, September 28, 1993

Report Supplied by Auction

HEAVY FOWL .20-.60.

LIGHT FOWL .20-.35.

MIXED FOWL .25-.45.  
 ROASTERS .60-.65.  
 FRYERS .50.  
 BANTAMS .15-1.50.  
 BUNNIES .50-1.75.  
 ROOSTERS .25-1.20.  
 TURKEYS .45.  
 DUCKS .40-1.55.  
 RABBITS .10-.90.  
 PIGEONS 1.00-2.00.

WHITE EGGS: EXTRA LARGE & JUMBO .62-.90; LARGE .52-.73; MEDIUM .50-.51.

BROWN EGGS: EXTRA LARGE & JUMBO .85-.90; LARGE .70-.84; MEDIUMS .60-.70; SMALL .39.

**Delmarva**

**Broiler**

EDISON, NJ

SEPTEMBER 29, 1993

DELMARVA BROILER/FRYER MARKET. FEDERAL-STATE

Movement of ready-to-cook whole birds was light to fair. Seller offerings were fully adequate to ample and generally slow in clearing. Live supplies were moderate; weights were mostly desirable. Processing schedules remained very heavy. Less than trucklot asking prices were unchanged; however, several sellers were willing to negotiate to attract additional buying interest. Trade sentiment was steady to weak. In the parts complex, dark meat items were in closest balance. Breast items, particularly boneless skinless were available and slow to clear. Wings were difficult to place.

ESTIMATED SLAUGHTER OF BROILER/FRYERS IN DELMARVA (000)

ESTIMATED ACTUAL AVG. WEIGHT ACTUAL AVG. WEIGHT  
 09/29 09/27 09/27 09/22 09/20 2,325 2,448  
 4.75 2,329 4.76

\*BROILER/FRYER CURRENT NEGOTIATED PRICES FOR IMMEDIATE DELIVERY INCLUDES MOSTLY MULTIPLE-DROP SHIPMENTS OF BRANDED AND WING TAGGED TO NEW YORK CITY FROM DELMARVA BRANDED U.S. GRADE A RANGE 48-63 WEIGHTED AVERAGE 53.77 NO. OF BOXES 9,383

\*7 of 9 plants reporting.

**National Egg Market**

EDISON,

SEPTEMBER 29, 1993

NATIONAL EGG MARKET - AT A GLANCE:

Prices for mediums trended unchanged to higher in the Northeast, and in some markets in the Southeast and Midwest. For the most part, prices for larger sizes were unchanged. The trade sentiment was steady to instances firm, mostly steady to fully steady. Movement of cartoned eggs into retail channels was good where features were in progress, otherwise fair to fairly good. Supplies of mediums were in close balance to adequate, larger sizes were generally adequate. In the Central States, prices for breaking stocks trended unchanged to higher. Trading and demand were irregular. Offerings were adequate. Some buyers wait for the markets to develop and worked off regular commitments. The undertone was steady. In the Southeast, trading in light type hens was too thin to report prices. Offerings were at least adequate. The undertone was at least steady. 230E RPP/rpp.

**Oklahoma City Feeder Cattle**

Oklahoma City

Wednesday September 29, 1993

OKLAHOMA NATIONAL STOCKYARDS WEEKLY CATTLE SUMMARY

Compared to Last Week: Feeder steers and heifers over 600 lbs. steady to \$1.00 lower, instances \$2.00 lower. Demand moderate but uneven for yearlings. Steer calves

under 500 lbs. \$4.00-\$8.00 higher, 500-600 lb. steer calves as well as all heifer calves firm to \$2.00 higher. Calf demand very good as much of the areas wheat is in and has good start. Quality of calf and yearling supply plain to average, end attractive. Flesh conditions of calves average to fleshy, with end slightly thin. Yearling flesh generally average, end fleshy. Weigh-ups average to full. Conditions similar to last week. Slaughter cows and bulls \$1.00 lower. 552 cows and bulls sold. Receipts this week 6,100; last week 8,225; last year 9,907. Supply consisted of 55% yearlings and calves over 600 lbs.; 36% calves under 600 lbs.; and 9% cows and bulls. Prices follow with weighted average weight and price in parenthesis.

Feeder Steers: Medium and Large Frame 1: 300-400 lbs. (350 lbs.) \$111.00-\$120.50 (\$117.23); 400-450 lbs. (418 lbs.) \$106.00-\$115.00 (\$111.36); 450-500 lbs. (480 lbs.) \$101.50-\$113.50 (\$104.38); 500-550 lbs. (524 lbs.) \$95.00-\$103.50 (\$98.98); 550-600 lbs. (572 lbs.) \$93.00-\$97.00 (\$95.89); 600-700 lbs. (650 lbs.) \$86.00-\$92.00 (\$90.29); 700-800 lbs. (750 lbs.) \$83.50-\$89.75 (\$86.55); 800-900 lbs. (850 lbs.) \$81.75-\$85.50 (\$82.82); 900-950 lbs. (907 lbs.) \$79.00-\$83.75 (\$81.74). Holstein Steers: Large Frame 2: 355 lbs. \$86.00; 450-500 lbs. (480 lbs.) \$78.50-\$79.00 (\$78.84); 550-600 lbs. (574 lbs.) \$74.25-\$75.50 (\$74.73); 670-710 lbs. \$70.25-\$70.50 (\$70.35); 900-950 lbs. (925 lbs.) \$62.50-\$64.50 (\$63.44); 1028 lbs. \$60.25.

Feeder Heifers: Medium and Large Frame 1: 300-400 lbs. (350 lbs.) \$94.50-\$109.00 (\$100.98); 400-450 lbs. (431 lbs.) \$88.00-\$96.75 (\$91.90); 450-500 lbs. (478 lbs.) \$86.00-\$92.00 (\$88.91); 500-600 lbs.

(550 lbs.) \$84.00-\$91.00 (\$87.32); 600-700 lbs. (660 lbs.) \$83.10-\$87.25 (\$84.79); 700-800 lbs. (750 lbs.) \$79.35-\$81.85 (\$79.94); 800-850 lbs. (816 lbs.) \$76.50-\$81.00 (\$79.43).

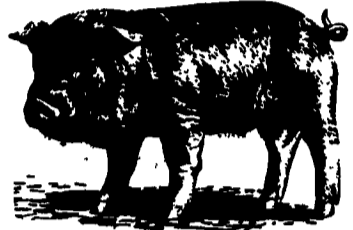
Slaughter Cows: Utility Y.G. 2-4 average dressing \$46.00-\$47.25, Cutters Y.G. 1-2 \$44.00-\$46.50; high dressing \$47.75-\$51.25; Canner and low dressing Cutters \$35.00-\$41.25.

Slaughter Bulls: Y.G. 1 1100-2200 lbs. average dressing \$55.50-\$58.50; high dressing/high boning few \$63.75-\$64.50; low dressing fleshy or thin \$50.50-\$54.25.

Replacement Cows: Prestated for Bangs, pregnancy and age Medium and Large Frame 1, average quality 2-7 years old 925-1375 lbs. 3-7 months bred \$580.00-\$675.00/head 8-10 years old 925-1275 lbs. 4-8 months bred \$450.00-\$585.00/head

Pairs: Medium and Large Frame 1, few 3-7 year old 975-1150 lb. cows with 125-200 lb. calves at side \$760.00-\$790.00/pair; 10 year old 900-1125 lb. cows with 100-125 lb. calves at side \$650.00-\$680.00/pair.

THIS REPORT COMPILED & PREPARED BY THE OKLAHOMA CITY LIVESTOCK & GRAIN MARKET NEWS BRANCH OF THE USDA'S AGRICULTURE MARKETING SERVICE. ROBERT MILES - TINA DOEBLER TELEPHONE (405) 232-5425.



**WHAT'S AHEAD FOR CORN & SOYBEAN**

- We Deal In Futures And Options
- Our Only Business Is Commodity Futures And Options
- Same Location And Principals For Over 20 Years
- When Buying options, your risk is limited to the loss of the premium paid plus all transaction cost. Buying futures and options have inherent risk and should be done only with risk capital.

FOR INFORMATION...LITERATURE... CHARTS... PLEASE CALL  
**215-821-8111 800-543-8939**

**LEHIGH VALLEY FUTURES INC.**

Suite LL6, 2200 Hamilton St., Allentown, PA 18104  
 The risk of loss in trading futures and options on futures can be substantial. Futures and options trading may not be suitable for everyone. You should carefully consider the risks in light of your financial condition in deciding whether to trade.

**FALL CRAFT SHOW & AUCTION**

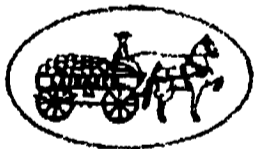
Wed., October 6, 1993

10 o'clock

Leinbach Produce Auction

1120 RITNER HWY.

SHIPPENSBURG, PA 17257



PAUL W. LEINBACH  
 MANAGING DIRECTOR

717-532-5511  
 800-346-2334

**Agricultural Producers**

Today's ag-markets are extremely volatile and likely will remain that way for the balance of this marketing year.

**Let us help...**

- Cash Grain Merchandising
- Cash Feed Stuff Sales (including cottonseed and hominy)
- Grain Forward Pricing
- Livestock Forward Pricing
- Full Service Futures Brokerage
- Market Consulting
- Rail-to-truck Facilities at Palmyra & Greencastle



IN USA - 1-800-722-6246

LOCAL - 1-717-838-7050

**NEW HOLLAND SALES STABLES INC. THE ACTION AUCTION**

LIVESTOCK IS OUR ONLY BUSINESS

**MONDAY**

SLAUGHTER HOGS

EARLY BIRD HOG SALE

7:30 A.M.

Sell Your Hogs At New Holland Sales Stables, Inc.

See them weighed, sold and pickup your check.



10:00 A.M.  
 HORSES  
 MULES



1:30 P.M.  
 BEEF SALE  
 SHEEP  
 GOATS  
 CALVES



**THURSDAY**

Beef Auction 10:00 A.M.

BULLS, STEERS,  
 BEEF COWS



1:00 P.M.  
 STOCKERS & FEEDERS



11:30 A.M.  
 SHEEP  
 GOATS  
 CALVES



**WEDNESDAY**

HEIFER SALE 11:00 A.M.  
 COW SALE 12:00 NOON

HEIFERS  
 BULLS



DAIRY  
 COWS

We have the usual run of 80 to 100 Heifers, all ages. Loads of fresh cows and springers from our regular shippers. Also some local fresh cows and springers.

1:30 P.M.  
 FEEDER PIG SALE



Pigs are accepted after 6:30 A.M. State graded from 8 to 12. Dairy Barn and Feeder Pig Barn are cleaned and disinfected weekly for your protection.

**NEW HOLLAND SALES STABLES, INC.**

12 Miles East of Lancaster Off Route 23, New Holland, Penna.

**MANAGERS**

Norman & David Kolb - 717-397-5538

Field Representatives

Luke Eberly - 215-267-8808 738-1865

Homer Eberly - 215-267-3047

Ron Ranck - 717-656-8848

Sale Barn Office Manager

Roger Floyd - 717-354-4341

FAX #717-356-0708

Order Buyer

Paul Good - 215-445-8862