

**1a CONSTRUCTION EQUIPMENT**

1976 Int. Backhoe, Model 3121, new rebuilt pump, gas engine, good shape, reliable & economical, \$5500. 717/626-1997.

1988 KOMATSU D57-S 2-1/2 yd ROPS, 1800Hrs. \$47500; CASE-350 6-way Dozer. \$6900; 1986 DRESSER-175C 2-1/2 yd. 90% Bottom. \$32500; 12-Ton Tag-A-Long \$2500; 35-Ton Stiff Neck Tandem-axle Trailer. \$3000. (609)466-2953.

'92 JD 410 4x4 Ext. hoe, 325 hours. 717/757-7842.

944 CAT Rubber Tire Loader, Rebuilt Motor and Hyd. Cyl's, Cab, 2 Yd. Bucket, Needs Brake Work \$6800; 955H CAT Loader, Pedal Steer, Cab, Ripper, Fair U/C. \$8500. (717)532-6540.

Asphalt Paver I.R. Alatt 550P, 600Hrs. on Machine, Electronics Grade & Slope, Diesel Tracks, Original Cost \$65,000. Asking \$27,000. (609)587-3358.

CASE 1155-D crawler loader, 1985, canopy, sweeps, multi-purpose bucket, very good condition, \$21,000. Call Tom Rosser. 215-245-2749 days; 215-789-1578 nights.

CAT 951C crawler loader, good undercarriage, \$14,900. A.L. Herr & Bro. 717-786-3521.

CAT D4, pony start, angle blade, excellent UC, 20 T. winch, \$3,800. 410-833-9091

Cat grater Model 212, tight machine, needs glass, good tires, \$4,500. (609)894-2849.

**CRAWLER LOADER** CASE 1150B, new pins, bushings & sprocket, recent engine, 1 owner, nice, \$12,000. 410-833-9091

**FORKLIFT** Koehring 710, gas, 4,000 lbs., 30', rebuilt engine, \$4,000. 410-833-9091

**FORKLIFT** PETTIBONE SUPER 6, gas, 4x4, like new rubber, excellent condition thru-out, \$4,000. 410-833-9091

Ford 4400 65hp industrial tractor/loader, 3pth, rear PTO, wt. box, power steering, 300 hrs, excellent condition, \$9,500. (717)272-3297.

**DISMANTLING FOR PARTS:** Just arrived for parts: JD 890 w/good 6619 engine, good U/C. All parts available.

**BALANDA EQUIPMENT** P.O. Box 407 RT 29 Palm, PA 18070. 1-800-322-8030

**FORKLIFTS**

All types and sizes, priced from \$800 and up, if we don't have it we will try to find it.

717-225-3798 or 717-873-0529

**2 FARM EQUIPMENT WANTED**

John Deere 720 gas tractor with complete 3 pt. hitch. Must be in good condition. Call 717-249-2591 after 5PM.

Oliver 770 Tractor to rebuild mine that got wrecked, engine and transmission not needed. (814)627-5149.

Small round baler, York Co. (717)741-0498.

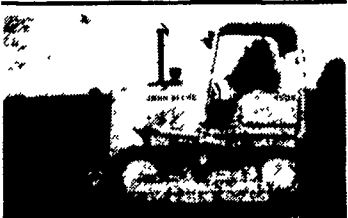
**WANTED:** Axle and hub for Int. 3200A skid loader or loader for parts. 717/938-3130.



1988 Case 455C, 945 Hours, Excellent Condition \$24,900



Man Lift Calavar 42 Ft. Good Condition



JD 450E w/6-Way Blade, Excellent Condition \$22,500



1974 JD 450B w/Loader & 4-Way Bucket & Backhoe w/Turbo Charged Engine, Low Hours \$14,900 Will Separate

We Buy & Sell

**AA Equipment**

1797 Robert Fulton Hwy., Quarryville, PA 17566

717/529-2512

No Sunday Calls

**FORKLIFTS**

2,000 to 15,000 Lb.

\$1,000 to \$12,000

Gas/LP-Diesel-Electric Cushion-Pneumatic-Rough Terrain

New Komatsu Forklifts Available

**PA INDUSTRIAL EQUIPMENT** (215) 326-7090

1985 Mauldin blacktop paver, 8'-12' width Ingersoll Rand 30-39 vibratory hot mix roller 302/284-4289

**3 SILOS AND UNLOADERS**

Silo-Matic Gemini II unloader, 14' surface drive, stainless fan, basic unit, 5 years, \$1100 OBO. Must sell. 717-949-3847.

**Fiberglass Bulk Feed Bins**



Capacities from 2 1/2 ton to 30 ton



**2 FARM EQUIPMENT WANTED**

**WANTED:**

**USED FORD & KUBOTA TRACTORS**

Call 717-949-6501 Daytime

**3 SILOS AND UNLOADERS**

**RELINE WITH SHOTCRETE**

3/4" shotcrete Surface is washed with high pressure washer. Shotcrete is sprayed on and troweled smooth.

**USED SILOS**

- 20x70 Lancaster
- 14x60 Lancaster - New Roof & Chute

13 Years Experience Relining Silos

Contact:

**MYRON STOLTZFUS (717) 768-3993 • (800) 383-3105**

S & S Silo Repair

RD #2 Box 91A Honeybrook, PA 19344

TOLL FREE

**Jamesway**

170 Polygon

Mixer

with J-Star

Scale System

"NICE"

Only 5 yrs. old

CALL

(717) 442-8134

- TMR Mixers
- Belt Feeders & Conveyors
- Silo & Silo Unloaders
- Barn Cleaners
- Berg Hook & Eye Chain
- Farmway Closed Loop Chain
- Freeman Flat Link Chain
- Manure Auger
- Replacement Chute & Parts
- Overized Sprockets
- Stalls & Free Stalls
- Silo Pipe & Distributor
- General Hauling

**Robert Gutshall**

82 Deck Rd., Womelsdorf, Pa. 19567 717-933-4616

**USED HARVESTORES® & SLURRYSTORES®**

In stock ready for installation.

**NEW ERECTION KITS and QUALITY STRUCTURES**

**GUARANTEED. WE EMPHASIZE QUALITY!**

**So Check With Us Now - The Price Is Right**

- \* 20x90 - 14B w/Gol. 74; 20x80 - 13B w/Gol. 74; 20x41 - 12B w/New PSA;
- \* 17x50 - w/Rebuilt Hercules, white roof;
- \* Rebuilt Goliath & Hercules unloaders w/warranty
- \* New Power Sweep Augers
- \* Used Harvestore® Roller Mills
- \* Any replacement parts - Gol. or Herc.

\* **REXNORD CHAINS - Gol. 20' = \$725.00**

"Used Harvestores®" is our Business Since 1975

**Better Bilt Storage, Inc.** Sugarcreek, Ohio 216-852-4088

Not affiliated with A.O. Smith Harvestore Products, Inc.

**New**

**STARLINE**

**Cen-Trak™**

**Power Drive Unloader**

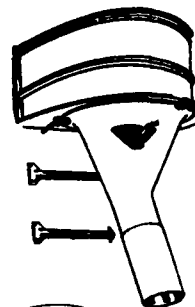
For replacement and new installations with tri-pod suspension systems

**Meet Cen-Trak! The New And Better Concept In Single Cable Silo Unloaders. It's A Winner.**

- Eliminates the headaches of complicated high torque center drive machines.
- Eliminates slip clutch problems.
- Eliminates roll pin breakage problems.
- Eliminates bull wheel and drive traction problems.

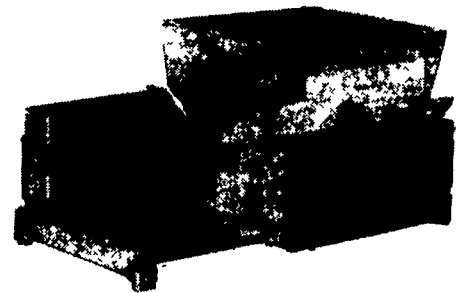
**And You Get...**

- Starline® reliability at a price that's right.
- Simple, rugged dependable design
- Less maintenance -- fewer trips up the silo.



FIBERGLASS FUNNEL \$165.00

**400 LOW PROFILE ROLLER MILLS**



**Rollermill Rentals For High Moisture Corn**



Full Line Parts Department For Starline

**DONALD R. NISSLEY**

RD #1, Willow Street, PA (Corner of Rt. 272 S. & Byerland Church Rd.)

(717) 786-7654