



# OPEN HOUSE!

10:00 AM to 4:00 PM

**TUESDAY, OCTOBER 5, 1993**



## LEON NOLT AND FAMILY

RD #1, Box 343, Reed Gap, PA

### 2 ALL NEW TURKEY HOUSES

This Facility Features:



Feeding,

PLASSON® Drinkers,



Curtain,

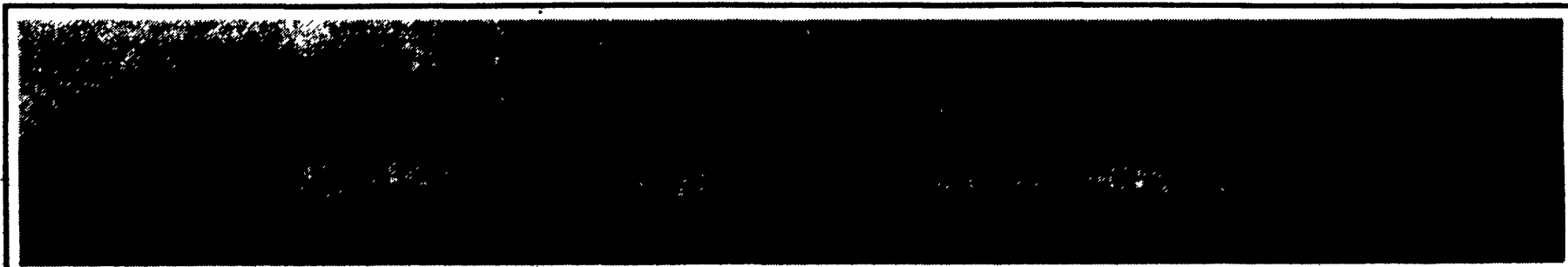


Fans,



Shenandoah

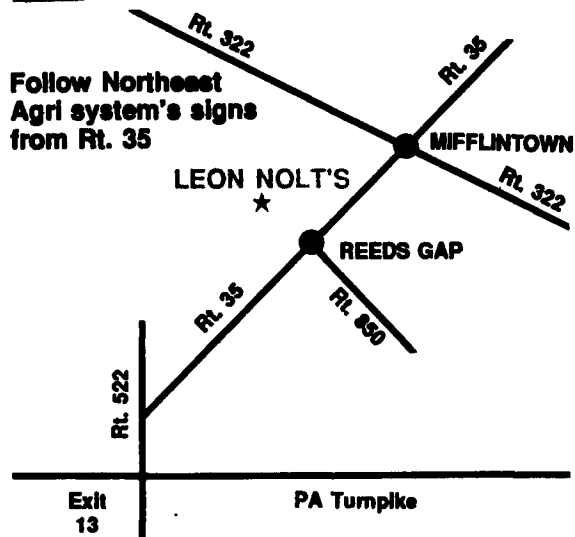
Space Heaters & Incinerator



See:

- New design power ventilator brooder with automatic inlets
- New **CHORE-TIME** adult feeder with plastic pan
- **CHORE-TIME** All-plastic H-2 Feeders
- **CHORE-TIME** Super 6 Environmental Control.
- New style finisher with Tri-Ply ceiling

MAP:



### TURKEY CONTRACTS AVAILABLE



ROUND HILL

- Increase current cash flow
- Complement existing farm operation
- Take risks out of changing market prices
- Renovate existing poultry housing



Round Hill Foods of New Oxford, Pa, a division of Wampler-Longacre Turkey, Inc., is expanding its growing operations in South Central Pa. and Northern Md.

If you are interested in becoming a contract hen or tom turkey grower with the second largest turkey producer in the U.S., please call John Menges at (717) 624-2191, Ext. 242, today!

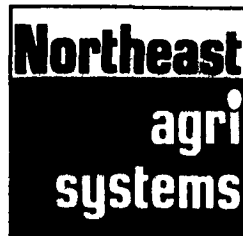
Or call Jay Kreider at Northeast Agri Systems  
1-800-673-2580

EQUIPMENT BY:

FINANCED BY:

BUILDINGS BY:

Northeast Agri Systems, Inc.



Flyway Business Park  
139A West Airport Road  
Lititz, PA 17543  
Ph: (717) 569-2702  
1-800-673-2580  
24 Hr. 7 Day  
Repair Service



Northeastern Farm Credit

Route 15, Colonial Park  
P.O. Box 49  
Lewisburg, PA 17837-0049  
1-800-326-9507



The Farm Credit System

**KING  
CONSTRUCTION CO.**

601 Overly Grove Road  
New Holland, PA 17557  
(717) 354-4740

STORE HOURS: Mon.-Fri. 7:30 to 4:30  
Sat. 8:00 to Noon