

35 TRUCKS & TRAILERS

Chevy 4WD, Dually, B.B., 4Spd., 370 Gears, Lock-Outs, Towing Package, 16" Radials, PS, PB, Sleeper, \$5000. (717)762-7940.

Chevy C30, 1985, w/11' steel flatbed, 454, AT, PS, PB, AC, good condition, \$5900. WANTED: 12' truck bed. 717-345-4882.

Royal Truck & Equipment Inc.

6910 Route 309 Coopersburg, PA 18036

(215) 282-4090
(800) 283-4090

Just Off I-76, Between Allentown & Quakertown Financing Pre-Approved



1985 GMC 7000 22' Flatbed Stake Bulk Head & Tie Down, Remanufactured 8.2 Diesel, 5 Spd., PS, PB, 23,000 GVW, No CDL Required. "Farmer's Don't Delay"



1983 FORD F900 14' Stake 8.2 Diesel, 5 Spd., PS, PB, 22,000 GVW, 73,000 Miles. "Make A Lot Of Sauce With This Stake"



84 Int. 1784 12' Low Profile Contractors Dump, Del., 5 Sp. 21,500 GVW (No CDL Req.) Sparkin' New Body - Don't Delay On This One!



Ford F350 Cab & Chassis 351, V8, 4 Spd., PS, PB, 11,000 GVW, Several To Choose From.....\$3,950 Ea. With New Stake Body..... \$4,950



1983 GMC 81964 Cab & Chassis 204 WB, DT 488, 210 HP, 5 SP Trans, AB, Ideal For Grain Tr. or Flat Bed Dump, Very Clean, Fresh Red Paint, Exc. Mechanical Cond.



1983-87 Ford LNB000 16' Lumber Flat Bed Dumps, Bulk Head, Tie Downs & Rollers, Twin Cyls, Triple Stage Sizzor Hoist, 3208 Cat 200+ HP, 5/2 Spd., AB, All in Excellent Condition & Fleet Maintained.

TWO ACRES OF ALL TYPES USED TRUCKS. "IF WE DON'T HAVE IT, WE'LL GET IT"

CHEVROLET TRUCKS

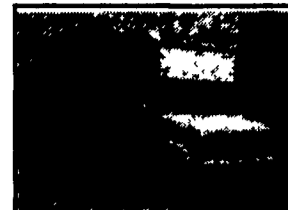
You Need It! We Probably Have It!



GMC DUMP
366 Automatic, 27500# GVW, Nice Truck
Sale \$8,500



'81 INT 9' DUMP
Diesel, Automatic, 26,000 #GVW, Private Owner
\$9,500



NEW H.D. 14,500# GVW 16' CUBE VAN
With Attic, 454, Air



NEW KODIAK 33000# 10' DUMP
Cat 5&2 Air Brakes, Air Trailer Equip., Air Body Controls, "A Gentlemens Dump Truck"



1993 CHEV HD 3500
1500# GVW, 6.5 Turbo Diesel, 5 Speed, Hinge Down Dump Sides, Pintle Hook, Many Custom Features



NEW CHEVY HI CUBES
350, 14 Ft. Van Bodies, 1 With Attic

CALL (717) 432-9611

LEFEVER BROS. DILLSBURG



Quality Dealer Since 1921
406 U.S. Route 15 • Dillsburg, PA 17019

Nicest Pre Owned Trucks Anywhere!

RTE. 422, WEST LEBANON, PA

(Across From Lebanon Valley Mall)

CAR VILLAGE
LEBANON, PA

717-274-2000

FAX

717-274-2717

Business Hours
Mon-Thurs 9-9
Fri & Sat 9-4

THIS IS JUST A SMALL PORTION OF OUR HUGE INVENTORY



Diesel Super Cab 4x4 89 Ford F-250 XLT Lariat
59,000 Miles, 7.3 Diesel, AT, AC, Limited Slip 4:10 Tow Pkg., Real Clean



Super Cab Dually 82 Ford F-250 XLT Lariat Like New, 15,000 Miles, 480 I.L., AT, OD, AC, Captain Chairs, Custom Wheels, A Real Looker



Box Trucks 90 Ford Super Duty 12 Ft. Box
89 Ford Super Duty 14 Ft. Box



Diesel Suburban 88 Chevy X 20 Series
6.2 Diesel, Auto, Air Conditioning, Silverado, Rear Barn Doors



Diesel Super Cab 88 Ford F-250 Custom
7.3 Diesel, 5 Sp, O/D, AC, 8000 GVW, Dual Tanks



Diesel Cargo Van 90 Ford E-350 XL 7.3 Diesel, AT, OD, Dual Tanks, Very Clean



Diesel 4x4 91 Ford F-250 XLT Lariat 7.3 Diesel, 5 Sp, O/D, AC, 8000 GVW, 38,000 Clean Miles



Stake Body Dump 91 GMC 3500
12 Foot Body, 350 I.L. Auto, 18,000 Miles, Very Clean Truck



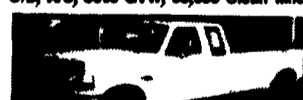
Flatbed 89 Ford F-350
7.3 Diesel, Auto, A/C, 48,000 Actual Miles



4 Wheel Drive 88 Chevy 3500 4 Dr Dually
Super Nice, 32,000 Miles, 484 I.L. Auto, A/C, Tow Pkg.



Farm Special 89 Ford F-250
Great Fuel Mileage, Fueling 300 6 Cyl., 5 Spd. OD, AC, Dual Tanks, Drives & Runs Super
\$8,900



Diesel Dually 92 Ford F-350 Super Cab WOW What A Truck, 7.3 Diesel, AT, AC, Tow Pkg., Captains Chairs



Ford Pickup Bed
Brand New Take Off Perfect
\$1,000



4 Wheel Drive Chassis 89 Chevy 3500
Rare Find, Long 181 Wheelbase, 350 I.L., 4 spd., 37,000 Miles



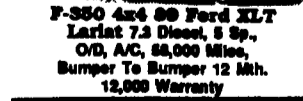
4 Door 4x4 88 Chevy 30 Dually Awesome Power 42,000 Miles, 484 I.L. Auto, AC, Tow Pkg, Look & Drive



4 Wheel Drive, 89 Ford F-250 XLT Lariat 351 I.L., 5 sp., OD, AC, 47,000 Miles, 8000 GVW



4x4 Stake Dump 92 Chevy 3500 Super Cab A Rare Find, Only 8,700 Miles, 484 I.L., 5 Sp, AC, All Options, Very Strong Truck



F-350 4x4 89 Ford XLT Lariat 7.3 Diesel, 5 Sp., O/D, A/C, 58,000 Miles, Bumper To Bumper 12 Mh. 12,000 Warranty



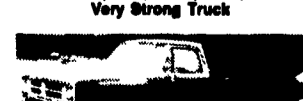
4 Door Diesel 92 Ford F-350 XLT Lariat 7.3, 5 Speed, AC, Very Strong, Ready To Pull



Flat Bed 89 Ford F-350
Nice Driver, 351 I.L., 5 spd., AC, 8 Ft. Omaha Flatbed, 55,000 Miles



Turbo Charged F-350 Diesel
89 Ford 4 Wheel Drive ATS Turbo, 7.3 Diesel, 5 Spd. O/D, Limited Slip 4:10, Air Conditioning, 37,000 Miles



Cummins Turbo Diesel
90 Dodge 250 4x4, Auto Very Clean, Tow Pkg., Look Out Mubs



Super Cab 2 Wheel Drive
91 Ford F-250 XLT Lariat Perfect, 28,000 Original Miles, 351 I.L., Auto, A/C, 8,800 GVW, The Nicest Anywhere



4 Wheel Drive 87 Ford F-250 XLT Lariat Nice Truck 351, V8, Auto, A/C, 8000 GVW, Dual Tanks, Tow Pkg



Super Duty 92 Ford F-450
Factory Warranty Remaining, 18,300 Miles, 7.3 Diesel, AT, AC, 8H. 137 Wheelbase