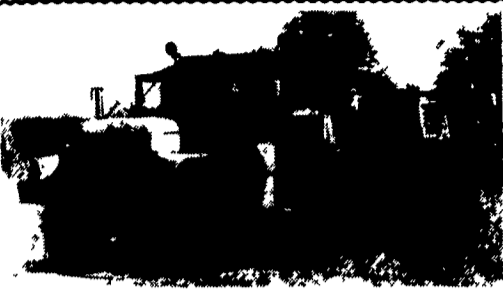


VEHICLES FOR SALE

- (1) 1985 Chevy Van
- (1) 1982 Chevy Service with box and rack, HD 1/2 ton, 4 WD
- (1) 1984 Dodge Service with box and rack
- (1) 1987 Ford Ranger with rack, King Cab - 4 WD
- (1) 1991 Dodge with side boxes and rack, 4WD
- (1) 1989 27,000 lbs. Trailer with dual tandem axle

For more information call (717) 265-2392
After 6 pm, call (717) 265-2960



INTERNATIONAL 6x6 BRIDGE TRANSPORTING STAKE BODY TRUCKS

Front Winch, PS, Air Brake, 1400/20 Tires, 21 ft. Bed with removable steel racks. Continental 6 cyl. engine. LIKE NEW 600-2,500 Miles. Excellent for off road heavy duty cargo transporting with their all wheel drive and ability to climb a maximum grade of 70 degrees. Double Frame. A must for every farmer \$9,450 Each.

(814)834-1018 St. Marys, Pa.



1991 Chevy G30 Beauville 15 Pass., FI 350, AT, AC, PW, PL, Tilt, Cruise, 38,000 Miles. #1642.



1989 Ford E250 Super Cargo, FI 351, AT, PS, PB, AC #1626.



1989 HINO FD, 20' Dry Box w/ Curbside Door, 6 Cyl., 6 Spd., 22,000 GVW, 9R22.5 (90%) PS, PB, A/C, 29,000 Mi. Stk. #1687.



1990 FORD E350 XL Cargo, 351 EFI, AT, PS, PB, A/C, Tilt, Cruise, PW, PL, Industrial Shelving, Ladder Racks, 9,500 GVW, 15,000 Mi. Stk. #1684.



1988 GMC 7000 8.4 Turbo Diesel, 6 Speed, 32,900 GVW, Air Brakes, 11Rx22.5, 20' Hackney Reefer Box, Dual Temp. Control, Thermo King RD 1 Unit, Two Side Doors, Extra Clean #1663.



1992 FORD E350 XLT 15 Pass., 351 EFI, ATO, PS, PB, Dual AC & Heat, Tilt, Cruise, PW, PL, 38,000 Mi., Dk. Blue. Stk #1670.

Four Way Auto Sales

770 West Main St.,
New Holland, PA 17557
717-354-3199

35 TRUCKS & TRAILERS

- 1992 Ford Thunderbird V6, AT, Loaded, Black, 58,100 Mi... \$10,600
- 1992 Pontiac Grand Am SE, Quad 4, AT, AC, CR, Tilt, PDL, AM-FM Cass., Maroon, 51,600 Mi.... \$9,400
- 1991 Jeep Wrangler Softop 4x4, 4 Cyl., 5 Spd., AM-FM Cass., Red, 29,400 Mi..... \$9,900
- 1990 Plymouth Sundance 4 Cyl., AT, AC, Tilt, AM-FM Black 25,700 Mi..... \$6,400
- 1990 Chevy Corsica LT, V6, AT, AC, AM-FM Cass., 62,600 Mi..... \$5,900
- 1990 Olds Delta 88 Royale V6, AT, Loaded, Silver 53,500 Mi..... \$8,900
- 1989 Ford Tempo GL 4 Cyl., 5 Spd., AC, Tilt, PDL, AM-FM Cass, White, 43,200 Mi..... \$4,800
- 1989 Chevy S-10 Tahoe 4.3 V6, AT, AC, CR, Tilt AM-FM Cass., Red, 37,300 Mi..... \$7,400
- 1989 Dodge Daytona ES Turbo AT, Loaded, Red/Gray, 51,500 Mi..... \$6,800
- 1989 Chevy Camaro RS V6, AT, AC, Tilt, PDL, AM-FM Cass., Maroon 58,300 Mi..... \$6,900
- 1987 Chevy Celebrity Eurosport, 4 Cyl., AT, Loaded, Black, 52,000 Mi..... \$4,900

Brubaker's Auto Sales
Myerstown, PA
717-866-5237

REEDMAN LEASING 1600 CARS-TRUCKS

* All Cars Below Equipped With Auto Trans, Air Cond, PB, PS, & Stereo.

* '94 NEW CHRYSLER LHS SDN \$295.00
Per Month For 24 Months. Closed End Lease. Stock #53015 6 Cyl VIN RH633567 MSRP * \$28,639 Total Of Monthly Payments \$7080 With \$2500 Down.

* '94 NEW CORVETTE CPE \$399.00
Per Month For 36 Months. Closed End Lease Stock #15011 6 Cyl VIN R6101316 MSRP * \$39,719 Total Of Monthly Payments \$14,364 With \$3000 Down

* '94 NEW LINC MARK VIII \$456.00
Per Month For 24 Months. Closed End Lease. Stock #98514 6 Cyl VIN RY617414 MSRP * \$38,675 Total Of Monthly Payments \$10,944 With \$3000 Down 11* Per Mile Over 30,000

* '94 NEW LINCOLN TOWN CAR \$470.00
Per Month For 24 Months. Closed End Lease. Stock #8089 6 Cyl VIN RY623109 MSRP * \$35,375 Total Of Monthly Payments \$11,280 With \$3000 Down 11* Per Mile Over 30,000 Miles

* '94 NEW LINC CONTINENTAL \$375.00
Per Month For 24 Months. Closed End Lease. Stock #9027 6 Cyl VIN RY605297 MSRP * \$34,475 Total Of Mthly Payments \$9000 With \$3000 Down 11* Per Mile Over 30,000 Miles

* '94 NEW CHEV CAMARO CPE \$228.00
Per Month For 36 Months. Closed End Lease. Stock #40022 6 Cyl VIN R2100595 MSRP * \$16,361 Total Of Mthly Payments \$2208 With \$2500 Down

* '93 NEW DODGE STEALTH "ES" \$294.00

Per Mth For 36 Months. Closed End Lease. 9M #86151 6 Cyl VIN PY043470 MSRP * \$24,380 Total Of Mthly Pymts \$10,584 With \$2500 Down

* '94 NEW MERC GRAND MARQUIS GS SDN \$317.00

Per Month For 24 Months. Closed End Lease. Stock #91019 6 Cyl VIN RX608450 MSRP * \$21,030 Total Of Mthly Payments \$7608 With \$2500 Down 11* Per Mile Over 30,000

* '94 NEW MERC SABLE GS SDN \$239.00
Per Month For 24 Months. Closed End Lease. Stock #94538 6 Cyl VIN RA606715 MSRP * \$18,265 Total Of Monthly Payments \$5736 With \$2000 Down 11* Per Mile Over 30,000 Miles

* '93 NEW MERC COUGAR \$284.00
Per Month For 24 Months. Closed End Lease. Stock #93823 6 Cyl VIN PH668649 MSRP * \$16,743 Total Of Mthly Payments \$6816 With \$1500 Down 11* Per Mile Over 30,000

SHOP REEDMAN BEFORE YOU BUY LEASE OR RE-LEASE A CAR OR TRUCK

FLASH! If You Still Have Payments On Your Present Leased Car Or Truck We Would Like To Bid On Your Lease For A New Vehicle, Individual Lease, Or Company Leasing.

* '94 NEW CHEV CAVALIER VL 4 DR \$175.00

Per Month For 36 Months. Closed End Lease. Stock #45052 4 Cyl VIN R7122137 MSRP * \$11,665 Total Of Mthly Pymts \$6300 With \$1000 Down

* '94 NEW CHEV LUMINA APV \$226.00

Per Month For 36 Months. Closed End Lease. Stock #34006 6 Cyl VIN RT100731 MSRP * \$18,953 Total Of Mthly Payments \$8136 With \$2000 Down

* '94 NEW PLY VOYAGER \$229.00

Per Month For 36 Months. Closed End Lease. Stock #75002 6 Cyl VIN RR603001 MSRP * \$17,571 Total Of Monthly Payments \$9244 With \$1500 Down

* '94 NEW S-10 BLAZER 4 Dr 4x4 \$254.00

Per Month For 36 Months. Closed End Lease Stk/ T-5030 6 Cyl VIN R2109045 MSRP * \$22,905 Total Of Mthly Pymts \$9,144 With \$2000 Down

Closed End Leases
First Monthly Payment Plus A Security Deposit Equal To One Monthly Payment Is Required Upon Delivery. Lessee May Have The Option To Purchase The Car At Lease End At A Price To Be Negotiated With The Dealer At Lease Inception. At The End Of The Lease If You Do Not Exercise Your Option To Buy You Will Pay A Mileage Charge Of 10¢ Per Mile For Each Mile In Excess Of 15,000 Miles Per Year Plus The Costs Of Any Excess Wear Or Tear.

* Price Includes All Cost To Be Paid By A Consumer, Except For Licensing Costs, Registration Fees & Taxes.

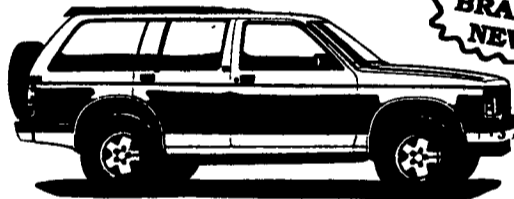
CALL 215-757-4961
Ask For Reedman Leasing Dept.
Reedman Rte 1 Langhorne Pa.

EBERSOLE PONTIAC - OLDS - GMC TRUCK

PRESENTS

GMC TRUCK "CLEAR OUT"

* ALL 93's REDUCED *

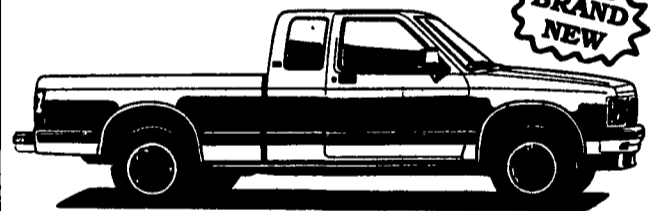


1993 4-DOOR JIMMY "SLT"

Auto, 4.3 V6, SLE, Pwr. Winds, Pwr Locks, A/C, Tilt, Cruise, Cass., Aluminum Wheels, Leather Int., and Much More

Stk #511479

\$20,798⁰⁰

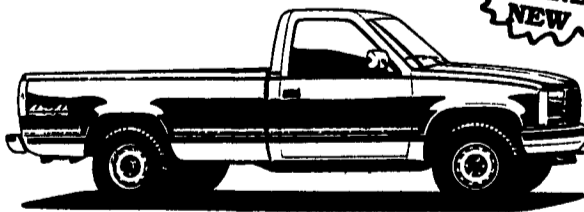


1993 GMC SONOMA CLUB CPE "4x4"

Automatic, 4.3L V6, AM/FM/Cass., SLE, Eq., Rear Jump Seat, Tilt Wheel, Cruise, Aluminum Wheels, and More!

Stk #523565

\$16,119⁷⁷

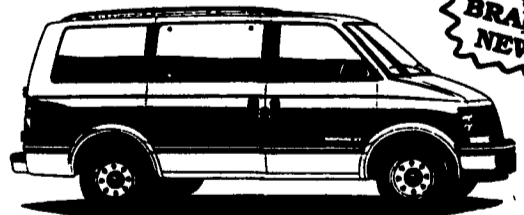


1993 GMC SIERRA TRUCK "4x4"

V8, SLE, A/C, Pwr. Lks., Pwr. Wind., Tilt, Cruise, Auto, Trailering Eq., Loaded

Stk #548353

\$19,090⁷⁰



1993 GMC SAFARI EXTENDED VAN

Auto, V6, Tilt Wheel, Cruise, Air Bag, AM-FM-Cass, Dutch Doors, Pwr. Lts, 8 Person Seating And More!

Stk #552081

\$17,024³²

* MANY MORE 93's TO CHOOSE FROM *

ALL 93's AT FACTORY INVOICE

Ebersole

PONTIAC - OLDSMOBILE - GMC

CUSTOMER GETS REBATE

Hours
M-F 8:30 am - 9:00 pm
Sat. 8:30 am - 4:00 pm

1900 Cumberland St., Lebanon, PA

Phone #
(717) 273-7611