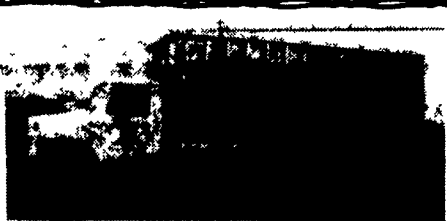




1985 Ford XL F350 6.9 Diesel, 4 spd, AM/FM, AC, Special Trailer Towing Body. Dual Rear Wheels. CLEAN & Inspected. *7995.00

TRAILER ENTERPRISES
13121 Maugansville Rd.
Hagerstown, MD. 21740
(301)791-5343 M-F 8:00-5:00



**1979 IH
18' Bulk Blower Truck**

3208 Cat, New Clutch & Ejectors, 10 Speed, 50,000 GVW

\$16,400

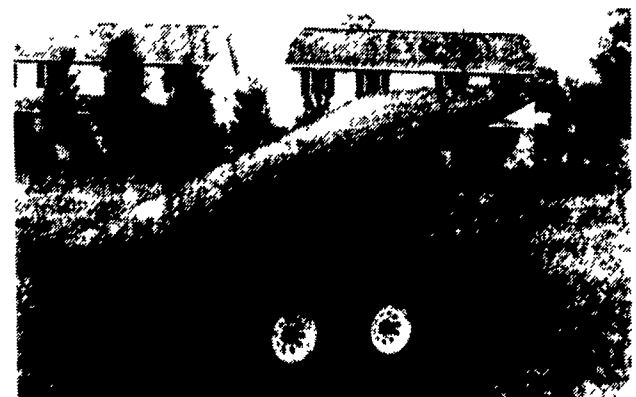
Lebanon Co.
717-866-6015 7:30-5 Weekdays

REDUCED TO GO \$17,500
87 Volvo/White Conventional-3406 CAT,
1459 Transmission, 40,000 Lb., 355
Rears, Air-Ride Cab, A/C Bud Wheels,
Dual 180 Gallon Tank, Dual Air-Ride
Seats, 42" Bunk, Heated Mirrors, Fuel
Heater, Super Sharp, Bright Red
w/Gold Trim
**717-436-5454 or
717-535-5366 Evenings**

35 TRUCKS & TRAILERS

1985 GMC Truck W/21' Aluminum Eby Cattle Bed, 8.2 Detroit Diesel Engine, Low Mileage
**FALLEN OAKS FARMS
814-926-2570**

HOSTETLER "FLATBED DUMP TRAILER"



It can haul hay, put Farm Sides on it and haul, Corn, Grain, Sawdust or Mulch.

- * Rugged 10,000# GVW with Radial Tires
- * Strong Harsh Truck Holst
- * Heavy Duty Knapheide Truck Flat Bed.

This Trailer is made to do the work day in and day out.
Base 12' Flatbed Model Dump Trailer \$4,695

Various Sides Available, or Build Your Own

Hostetler Truck Bodies & Trailers
Rt. 322 Milroy, PA 17603
(717) 667-3921

HENDERSON

TARP & TRUCK COVER SERVICE
REAR 8 ANN STREET MIDDLETOWN, PA 17057

PH. (717) 944-5865

Interstate 283 East-West, Take Harrisburg Airport Exit to Middletown or Take Exit 19 Pennsylvania Turnpike. Just 15 minutes from Harrisburg, PA.

★ WE SPECIALIZE IN ALL TYPES OF FARMING COVERS ★

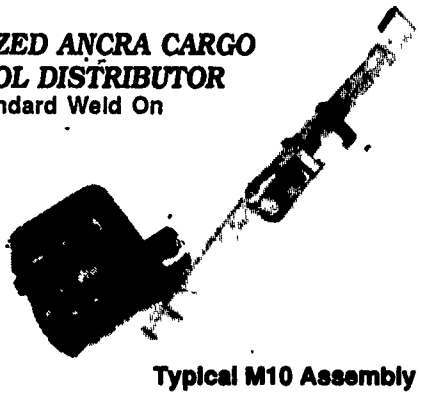
AUTHORIZED ANCRACARGO CONTROL DISTRIBUTOR
Standard Weld On

MANUFACTURERS OF **CANVAS & VINYL TARPS**

HERE'S A LISTING OF A FEW TYPES:

1. Steel Tarps
2. Mesh Tarps
3. Lumber Tarps
4. Dump Tarps
5. Open Top Tarps
6. Machinery Tarps
7. Roll Tarps

- * Repair Dept. at your Service.
- * We Accept Master Charge & Visa.
- * We Ship Anywhere!



Typical M10 Assembly



We Sell & Install Roll Tarps - Call for Pricing!

WE ALSO SELL HEADACHE RACKS

Mark VII - Pickups - Broncos - Bronco II - Stake Body - Crew Cab

Custom Vans
XLT
Grand Marquis
Marquis

Lincoln
Topaz
Diesel Pickups
Mustang
T Bird

'93 FORD CREW CABS

In Stock

- (2) '93 Diesel, Stick
- (1) '93 Turbo Diesel (In-stock)



1991 FORD F150 XLT

V8, AT
#1729A

\$15,695



'93 FORD AEROSTAR XLT Extended, All Wheel Drive, 21,000 Miles, Like New #P1734 ...Like New \$21,400



'92 DODGE DAKOTA Extra Cab, 3.9 V6, 4 Spd., 18,000 Mi., One Owner, #P1604BOn Sale For \$12,288



'92 FORD F150 XLT, 4x4
302 V8, AT, With Plow #P1739
\$19,975



'90 FORD BRONCO "EDDIE BAUER"
AT, Loaded, 35,000 Miles #P1708
\$17,897



'92 CHEVY C1500 4x4, V8, AT, AC, One Owner, Local Trade, 23,000 Miles, #1716AOn Sale \$16,988



'91 FORD EXPLORER XLT 4 Dr., AT, Cassette, Very Clean #P1736Special \$17,600



'92 FORD F150 XLT 302 V8, 4 Spd., 1-Owner #1609A\$14,989



'90 FORD F150 XLT
6 Cyl., 5-Speed, 13,000 Miles, #P1654
\$14,379



'93 FORD AEROSTAR XLT
AT, Dual A/C, Roof Rack #P1730
\$19,997



'91 FORD AEROSTAR 6 Cyl., AT, AC, Low Miles #1828A\$15,897



'92 FORD F250 5.8 liter, AT, 30,000 Mi., Like New #P1675...Sale Price \$14,999



'90 DODGE CARAVAN SE, AT, AC, White, 36,000 Miles, #1974B\$12,997

- '91 Ford Ranger 4x4, Super Cab, V6, 5 Speed #2067A.....\$12,999
- '88 Dodge Caravan LE, 6 Cyl., AT, AC, #2034A.....\$11,400
- '88 Chevy 3800 Crew Cab Dualy, Silverado, 484 V8 #1751A.....\$14,995
- '88 GMC S-15 Extended Cab, Sierra, V6 AT, #1829A.....\$10,995
- '88 Ford Ranger, 4 Cyl., 5 Spd., Cassette #2007B.....\$10,195
- '91 Ford Econoline Conversion Van, 6 Cyl., AT, New Paint #1967.....Special \$5,995
- '90 Ford F150 XL, 320 V8, AT, AC, #P1653.....\$14,999
- '88 Jeep Grand Wagoneer, 53,000 Mi., V8, Loaded w/Leather #1224A.....\$12,999

Unless This Emblem Is On Your Car Or Truck You Probably Paid Too Much

SHEEHY LEBANON

SHEEHY FORD LINCOLN MERCURY INC.
20th & Cumberland St., Lebanon

Parts Dept. Open
Daily 8-5
Sat. 8-12
717-273-8168

9-9 Daily
9-5 Sat.
717-272-7671



Tempo - Cougar - Continental - Town Car - 4x4 - Box Van - Rangers