

# Penn State Poultry Facilities Nears Completion

UNIVERSITY PARK (Centre Co.) — Penn State's new Poultry Education and Research Center is nearing completion, said officials in the College of Agricultural Sciences. Faculty and staff are expected to start moving into the new facilities later this fall.

"Relocation of the poultry research and education farm from its current site has been a college priority for at least three decades," said Dr. James Starling, senior associate dean for administration in the college. "It's rewarding to see this new facility become a reality."

"This new center will give our faculty and students access to state-of-the-art facilities for studying poultry," said Dr. William D. Weaver, professor and head of Penn State's Poultry science department. "The present poultry farm was built in the 1930s, and it's fairly antiquated. This new construction will bring our facilities up to date. We'll be able to accomplish much more in both teaching and research."

The Poultry Education and Research Center is located off University Drive extension on the northeastern fringe of the University Park Campus. The \$5.5 million facility will contain six separate buildings with an area of approximately 50,000 square feet. An additional \$650,000 will be invested in new equipment.

"The new complex includes a central research and administration building," said Weaver. "There are separate houses for meat birds, young layers and adult layers, as well as a breeder building for genetics work and a meat processing lab."

Among the new facilities are four environmental chambers.

"These chambers allow us to control the birds' environment," said Weaver. "Each chamber can hold up to 400 birds. We can alter the chamber's temperature, relative humidity, ventilation, and light rates to simulate different seasons, housing types or other environmental factors."

"Although some items will be moved from the old poultry farm to the new center, outdated equipment will be replaced by modern equivalents," said Weaver. "New items to be installed in the facility include incubators, research and commercial production cages, and various lab and processing equipment."

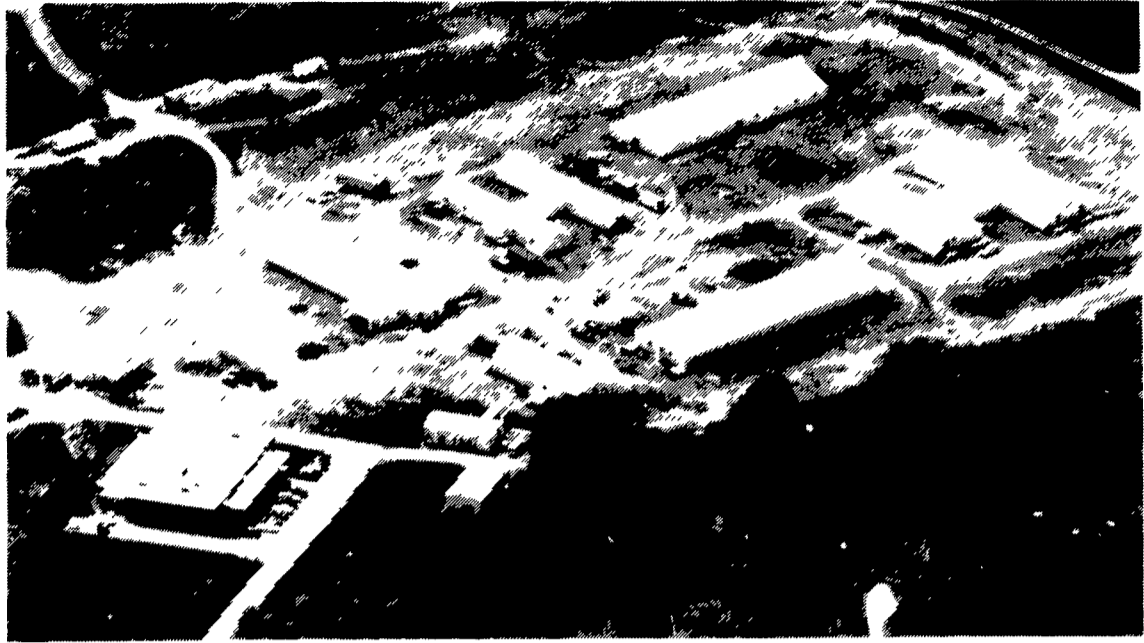
Penn State's College of Agricultural Sciences plans to hold a dedication ceremony for the Poultry Education and Research Center in Spring 1994. In the meantime, here's a preview of what the center's six buildings will include:

- The Research and Administration Building will house a conference room, environmental chambers, a hatchery, a feed mixing area, battery rooms, a surgery room, student housing and office space.

- The Meat Bird House will have four sections, each with 24 research pens and a laboratory. The Pullet House will feature 10 individual floor pens, a large pullet cage rearing room, a feed mixer and feed room, and a laboratory.

- The Cage Layer House and Turkey Grow-Out Facility will have six-floor pens, cage layer room for 5,000 hens, laboratory and egg storage space, and an analysis and processing room. The building also will contain 24 floor pens for market turkeys.

- The Breeder House will



Penn State's new Poultry Education and Research Center is nearing completion. The \$5.5 million facility will contain six separate buildings with an area of approximately 50,000 square feet. An additional \$650,000 will be invested in new equipment.

have a large artificial insemination cage room for breeders, along with floor pens, an egg

cooler, and laboratory. The Processing Building will contain processing rooms, walk-in

coolers and freezers, laboratory space, a shop and a garage.

## Northeast Poultry Show Opens

(Continued from Page 10)

buffet breakfast followed by breakout sessions for broiler, egg, and turkey producers. At the Broiler Conference, Dr. Vergil Davis, director of avian biological development and regulatory affairs for Sanofi Animal Health, Inc., will review a new treatment for bursal disease. Following Davis, Noel Dykes, Sterwin Laboratories, Inc., will review ventilation options. Dykes is recognized as one of the authorities on various ventilation alternatives.

At the Egg Conference, Dr. Richard Gast, a microbiologist with U.S.D.A.'s Southeast Poultry Research Laboratory in Athens, Ga., will give an overview of all the research to-date on Salmonella enteritidis. For egg producers who have been plagued with this problem, Gast will provide a glimpse at

what help may be expected from research efforts. Joanne Ivy, vice president of the American Egg Board, follows Gast with a "first" for U.S. egg producers. Ivy will preview the new television commercials produced by Grey Advertising which will probably air in October 1993.

At the Turkey Conference, Dr. Y.M. Saif, a member of the Department of Veterinary Preventive Medicine and Department of Poultry Science at Ohio State University, will review recent trends in managing turkey diseases. Saif is frequently consulted by the commercial turkey industry for advice and counsel regarding turkey diseases.

Dr. Mike Hulet, Penn State University Poultry Science Department, will discuss how litter can affect turkey quality. Hulet is a recent addition to the Penn State faculty, but has

been involved in numerous projects regarding litter at his former university, Virginia Polytechnic Institute and State University.

AT the conclusion of the breakout sessions, conference attendees will be treated to a special presentation by Gene Perret, Bob Hope's head comedy writer.

**Social Functions** - Hospitality suites will be open Tuesday, Wednesday, and Thursday evenings. There are also two other social events during the show.

Attendees have the option Wednesday evening of traveling by bus to the Dutch Apple Dinner Theater to see the musical drama, "Phantom of the Opera."

On Thursday evening, the show concludes with a social and banquet in the hotel ballroom with special door prizes and humorous presentation by Bryon Townsend.

**AMSHELL**

**Pure Reef Oyster Shell is good for your egg's image**

Cracks and leakers always did annoy customers. Now they frighten them. Every thin, weak shell that sneaks off to market is a potential problem.

It's just good merchandising to let your customers know your quality control program includes oyster shell as a natural way to help produce strong eggshells.

Oyster shell adds an extra margin of safety to any program. And producers know the annual investment per hen is less than the income from the extra eggs they market over a full laying year.

Call or write for your copy of the "Oyster Shell Research Review," and figures for the annual investment per layer in your area.

But don't wait for a problem to develop. Lock Amshell Pure Reef Oyster Shell into all your layer rations.

**American Stone-Mix, Inc.**

8320 Bellona Avenue  
Towson, Maryland 21204

Pure Reef Oyster Shell is distributed by The Fox Company, Newfield, NJ 08344  
Phone 800 257 7022 or 609 692 4400



PLEASE VISIT US IN BOOTH #3

**NORTHEAST POULTRY SHOW**

Lancaster, PA  
September 29-30, 1993



Arthur McAlister  
President

Compliments of

**York Ag Products, Inc.**

Suppliers of

**York Calcium Flour and York Calcium Chips**

a natural, coarse calcium supplement

York Ag Products, Inc.  
P.O. Box 327  
York, Pennsylvania 17405  
Tel (717) 843-9937  
1-800 632-1895  
Fax (717) 845-7885



Dale Anderson  
Vice-President

**Heritage**

Providing Optimum Performance Management Services and Quality Computer Software to the Poultry Industry

See us at **Booth 29** at the Northeast Poultry Show  
Lancaster, PA

September 29 and 30th, 1993

**Heritage PMS, Inc.**  
Heritage Computer Solutions  
458-B Valley Glen Rd, R.D.#3  
Annville, PA 17003  
717-397-1998 / 717-838-1685