



The hydraulic doors on the modified truck can be opened in one-ton per acre increments from two tons to eight tons per acre, according to Stauffer. Here, Chris Kaley points to the specially built agitator. Below are the broadcast spinners that eject the layer manure 12 feet on either side of the truck.

## Manure Marketing

(Continued from Page 1)

was conducted among those on the lists. Of those who responded, 56 percent of the receivers said contacts made as a result of the list lead to making "one or more deals" and 72 percent of the suppliers said the contacts lead to making one or more deals. Those responding, according to the report, indicated they supply or receive 7,040 tons and 2.2 million gallons of manure annually.

Composting the manure may be the answer. In this case, a more refined, drier product is available for the buyer to use as an overall fertilizer, or combined and marketed

as a specialty fertilizer product.

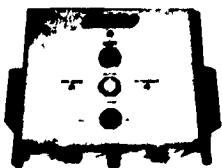
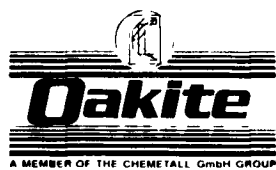
In the end, according to the extension agent, if farmers would take more time to think about marketing, they could profit.

(Turn to Page 5)



After dried and composed, a frontloader is used to move the material to a conveyor, which loads it to a truck, or to a grinder to be further refined.

### Look what's new from the oldest name in plant sanitation



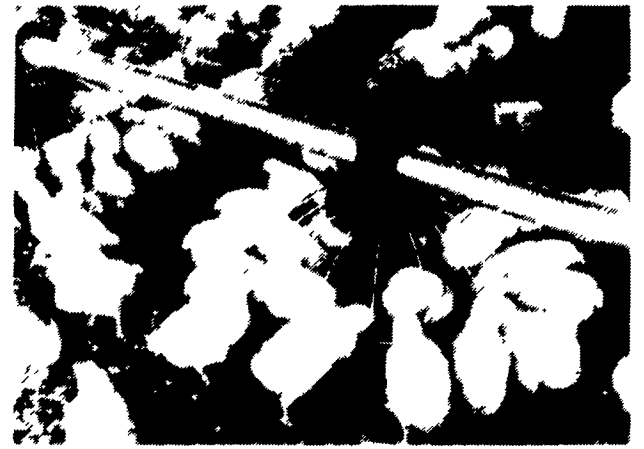
- New line of sanitation cleaners for the egg industry.
- Accurate automatic dispensing equipment.
- Trained, reliable technical service from our team of experts.

Tel: 800-526-4473 Fax: 908-464-6031

Booth Number 27

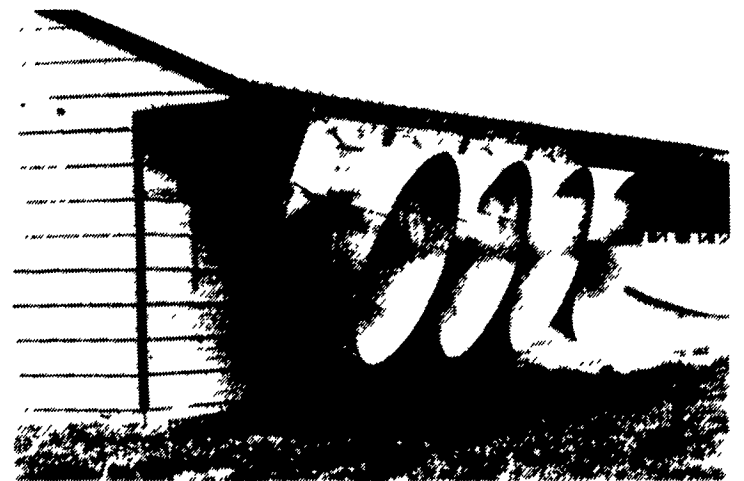
**Oakite has the solution**

# If broilers could speak...



...THEY WOULD TELL YOU HOW COMFORTABLE THEY ARE IN THE NEWLY REMODELED BROILER HOUSE AT THE EDWIN & ESTHER HOOVER FAMILY FARM, EPHRATA, PA.

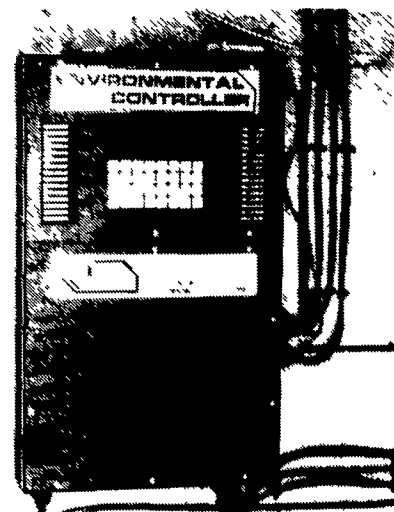
**Ventilation with the Grower in Mind**



**TUNNEL VENTILATION WITH COOLAIR FANS**



**AGRI VENTILATION SYSTEMS CURTAIN CONTROL**



**G.C. COMPUTER CONTROL FOR ACCURATE VENTILATION**

**IF YOU NEED TO UPGRADE YOUR VENTILATION SYSTEM. CALL HERSHEY**

# HERSHEY EQUIPMENT CO.

255 PLANE TREE DRIVE  
LANCASTER, PA 17603  
(717) 393-5807

**IF IT'S WORTH YOUR INVESTMENT, TRUST IT TO HERSHEY**