

1915



PRECISION HARVESTING

The Model 1915 self-propelled forage harvester makes it easy to make high-quality forage. The rugged 26-inch-wide cutterhead uses 12 full-width knives to deliver a fine, uniform chop for the best quality feed. And, the Accucut™ knife sharpening system makes it easy to chop at peak efficiency.



Stop in and get the details.

QUALITY USED EQUIPMENT FOR SALE

Like New 1992
Stoltzfus 8-Ton Wet Lime Spreader
With Hydraulic Spinners

SPREADERS

- NH #791
- New Idea #381 Box
- New Idea #3125 Slurry (New)
- Ford CL45 Skid Loader

BHM FARM & LAWN EQUIP.

SALES - PARTS - SERVICE
Route 934 - 2 Miles North of Annville, PA
Telephone 717-867-2211



Taneytown Farm & Hardware

410-751-1500

Bush Hog® King Cutter Ingersoll Garden Tractors

Int. 656 D, WF.....	\$3,900
Int B275 w/Loader.....	\$2,500
JD 346 Baler w/thrower.....	\$2,900
Int. 364, w/loader.....	\$3,900
Case 380 w/Loader, 900 Hrs.	\$5,900
MF 30 w/Loader.....	\$5,500
JD 714 Wagon.....	\$2,500
New 5' Mowers.....	\$495
New 6' HD Mowers.....	\$695
New 7' HD Mowers.....	\$1,395
New 10' Bush Hog® 2510.....	\$3,795
New Shaver HD 8 Post Drivers.....	\$1,095
New Shaver HD 10 Post Drivers.....	\$1,695
Parting Out - Ford 8N, 9N, 600, 900, MF 35, 65	
We Specialize In Parts And Repairs On Vintage Ford and Massey Ferguson Tractors	



JOHN DEERE MODEL 2640
70 HP Diesel, Hi-Lo Independent PTO,
2 Remotes, 72" Woods Mower,
72" Grading Blade, 800# Suitcase
Weights, Rear Mounted Farm-
Hydraulic Lift w/Fork Lift -
1/2 Yard Bucket - Implement Lifter
Entire Package \$12,800
516-722-4533
516-323-1408



WISCONSIN ENGINES

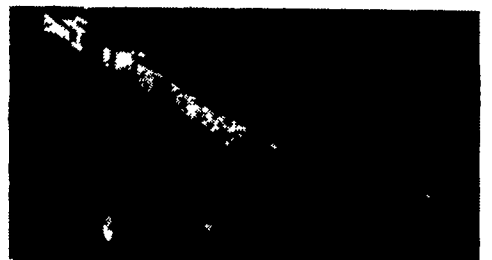


Liquid Manure Pumps
Portable & Stationary

USED EQUIPMENT

Gehl 1200 Harvester w/3038 2 Row Head & 1000 Hay Pickup	\$6,300
NI 325 NR Corn Picker, 12 roll bed	\$5,700
(2) NI 325 NR Corn Picker	\$5,500 ea.
NI 325 NR Corn Picker, 8 Roll Bed	\$3,950
NI 324 WR Corn Picker, Nice, 12 Roll Bed	\$3,800
(2) NI 323 Corn Picker, Excellent.....	\$3,500 ea.
NI 323 Corn Picker.....	\$2,500
Brillion 12' Transport Cultipacker	\$1,150
NH 489 Haybine, Nice.....	\$3,950
NH 456 Mower.....	\$1,650
NH 258 Rake.....	\$1,800
Hesston 2RN Head.....	\$750
New Hesston 4550 Baler w/Hyd. Thrower (Same as IH 8520)	\$7,500
Without Thrower.....	\$6,500

ZIMMERMAN PORTABLE ELEVATORS



WELL BALANCED, RUGGEDLY BUILT FOR MANY YEARS OF TROUBLE FREE SERVICE

From 24 Ft. to 48 Ft. Available

USED TRACTORS

IH 806 Tractor, Gas.....	\$3,800
IH 1566 Tractor, Cab, Bad TA, 20.8x38 Tires.....	\$7,900
IH 684 Tractor, 3200 Hrs., nice.....	\$9,900
IH 1066 Tractor, Cab, Air, Heat, 20.8x38 Tires	\$9,900
David Brown 770 Tractor w/Loader	\$4,600
IH 1256	\$7,500
Ford 1310, 4WD w/Loader.....	\$7,900
Deutz 100-06	\$5,800



MILLER'S REPAIR

1 Mile North of Bird In Hand
8 Miles East of Lancaster
Ph. 717-656-6109

Sales, Service & Parts For
AGCO Allis, Kubota, Long, Belarus
New Idea, Hesston,
Bush Hog And Bandit Chippers

MARSHALL MACHINERY, INC.

Rt 652, Midway Between Indian Orchard and Beach Lake. Hours: 8-5 Mon.-Sat.
Honesdale, PA 18431 (717) 729-7117

WE SHIP PARTS
DAILY BY UPS.

PARTIAL LISTING INDUSTRIAL

TRACTOR/LOADER/BACKHOES: Ford 555B TLB w/Cab, 775 Hrs., Very Good Condition; Case 480, 580. AC 715C. Kubota L4150 w/Cab 200 Hrs., 245; Cat 955 Crawler Loader. Very Good Undercarriage; Arps Model 56, 3 Pt. Backhoe.
DOZERS: AC H3; IH TD8 Series E w/6 Way Blade; JD 350C w/ All Way Blade.
LOADERS: AC 640; AC 615; Massey 2135; JD: 350 Crawler Ldr., 440B Log Skidder; Pettibone B66 4WD Forklift; Ford Lane Paver Model A-2; AC 600 Forklift; AC 345 Payloader w/Log Fork And Bucket; AC 840 1 1/2 Yd. Payloader.
SKID STEERS: NH L553; JD 375; Gehl 4610; Case 1845..

HAY AND FORAGE

RAKES: 256 & 258 Side Rakes; JD 660 w/Dolly Wheels. NI Rakes; Fahr Four Star Centepede Tedders; New Tonutti PTO Trailer Rotary Hay Rakes, 9' Or 11'8"; New Deutz Fahr KS2.60 Dual Rotary Rake w/Hyd. Fold For Easy Transport- 19 1/2 Ft. Working Width; Vicon 3 Pt. Tedder Rake.
NI 406 9/4 Ft. w/Dolly Wheels; Hesston Discbine Reconditioned Cuts 9'6".
HAYBINES: NH: 469, 472, 489. HESSTON: 1070, 1071, 1090, 1014 Hyd. Swing. NEW IDEA: 270, 272 Cut/Ditioners.
ROUND BALERS: Hesston 530, Like New; JD 410, NI 483 & 484. SQUARE BALERS: JD 336; NH 68 & 320. SQUARE BALERS w/KICKERS: NH 273, JD 337.
FORAGE HARVESTORS: HESSTON: 2000-100, 7020 w/Your Choice Of Heads, 7140; NH Super 717; NH 782 Chopper w/824, 2R Head.
LARGE SELECTION OF PICK UP AND CORN HEADS - CALL FOR YOUR NEEDS.
GRINDERS/MIXERS: Artsway 425A; Gehl 100 Hyd. Drive w/Scale.
NI 310 Picker.
Kasten 22 Forage Wagon, Tandem Gear.
JD 3300 Combine w/13' Grain Head.
Gleaner K Combine w/10 Ft. Grain Head.
CHOPPERS: NH 36 Flail; 718; FORAGE BLOWERS: NI: 620, 622. GEHL 1580 Blower.
10'x24' Tandem Axle Hyd. Dumping Round Bale Hauling Trailer.
WHITE TOP HARVESTOR SILO, 20x32 w/Unloader, Torn Down Ready To Load, Delivery Available.

TILLAGE EQUIPMENT

Tandem Discs: IHC: 350 Smoothing 14 Ft.; 37 Smoothing 14 Ft. WHITE: 13 Ft. BUSH HOG: 12 Ft.; 14 Ft. Plowing; 13 Ft. Smoothing. MASSEY FERGUSON: 10 Ft. Leveling; 12 Ft. Smoothing. KEWANEE: 800 Super Flex 14 Ft.; 13 Ft. Rock Flex. JD: RWA 13 Ft. Smoothing; BWA 12 Ft. Smoothing.
OFFSET PLOWING DISCS:
BUSH HOG: 12 Ft. Reconditioned; 9 1/2 Ft. Heavy Duty. MILLER: 11 Ft. 3 Bar; 14 Ft. KEWANEE: 12 Ft. Demo. ATHENS: 11 Ft. Tandem.
PLOWS:
JD 3 PTH Chisel Plows; JD 2600 Auto Reset; IHC: On-Land Hitch 710 6X; 720 8X; 735 Variable 5X. 7-14 Shank 3 Pt. Chisel Plows.
BRILLION: 16 Ft. And 18 Ft. (Danish Tine) Spring Tooth Harrows.

TRACTORS

AC: 7040 Powershift; 7010 w/Cab, PS; 6080 w/ROPS & Sunroof; 6060; 5040 w/Ldr.; 190XT Diesel; 180 Diesel; 170G; D12; D10 w/Woods L159 Mower.
BOLENS: 224 4WD Tractor w/Ldr.
DEUTZ: 7085 w/Cab 2WD; DX90 4WD.
FORD: 6700 w/Ldr.; 4000 w/Ldr.; 3000, 2600 w/Boom Sickle Bar Mower; 601. IHC: 234, 4WD w/Belly Mower; IHC 686; 140 w/Cultivator; Ferguson 20 w/Front End Loader.
Farmall: M. MF: 50. CASE: 1175. JD: 4250 w/Cab, Mechanical Front Wheel Drive; 4050 w/Cab Mechanical Front Wheel Drive; 2940 w/Front End Ldr.; 70 Dsl. Standard. KUBOTA: B5100 E w/Ldr.; B8200 w/Mower; B8200 4WD w/Front End Loader; M8950 4WD w/Cab, Demo, 85 HP.
OLIVER 55 Dsl.
LONG 610 4WD w/Ldr.
SAME Satumo 80.
HI CLEARANCE: Farmall Super A, 140; Int. 504.

SPECIAL

Int. TD-8 Series E
Dozer w/6 Way Blade, Real Nice
\$12,950

TINKERER'S ROW: AC D15; AC B; AC 175; Ferguson 20; Farmall H; Farmall 460 Diesel; Ford 8000; JD 2020 Diesel; Haybuster No-Till Drill; AC D15 3 Pt. Cultivator & Side Dresser; Case 310C Loader w/Ripper; Same Buffalo 130.

MANURE EQUIPMENT

LIQUID: Hawkbit 3220 Gal.; Hedlund Martin 2900 Gal. And 2400 Gal.; Betterbilt 1500 Gal.; Clay Honey Wagon- Vacuum; Leftover Wic 2100 Gal. Tandem Axle Liquid Spreader- Discount Price.
Gehl 309 Side Delivery; NH 304 Side Delivery; NH 307; New Ford NH 306 Side Slinger Manure Spreader, Tandem Axle; Knight 716 Side Spreader.
Several NI And NH Box Spreader, Various Sizes. BARREL SPREADERS: NH 663.

PLANTING EQUIPMENT

Brillion 3 Pt. Sure-Stand Seeder; JD 8250 Disc Grain Drill, Like New; AC 2-4-6- Row Corn Planters; JD 2 Row 3 PTH Corn Planters; Int. 250A Trailer Corn Planter; Lilliston No-Till Seeder; Brillion 10 Ft. Cultimulcher; JD 2 Row Tool Bar Corn Planter 3 Pt.; Cole Powell Multiplex Planters.

MISCELLANEOUS EQUIPMENT

HYDRO LADDER APPLE PICKER.
TRAILERS: Int. 7 Ton.
SPRAYERS: Myers 100 Gal. 3 Pth.; JD 535 Trailer Sprayer. Assorted Trailer And 3 Pth. Sprayers. BCI 300 Gal. Sprayer Tank On Trailer; Century 300 Gal. Sprayer On Trailer. Rotomist 100G Air Sprayer.
FEEDER WAGONS: Knoedler Feeder Wagon; Knoedler Dial-A-Mix Wagon; E-Z Flow 220 w/Grain Wagon; Kilbros 250 Grain Wagon.
TMR MIXER WAGON: Steiner SM165 w/Scale; Schuler 175B; York Heavy Duty Pull Type Road Rake; Farmhand Tub Grinder; Case/IH 8610 Bale Processor; Hesston #10 Stack Hand And #10 Stack Processor; Cardinal Auger Grain Elevator; Westfield 8x51 Ft. Grain Auger; Shaver 3 Pth. Post Pounder; JD 30 2 Row Potato Digger; MC 3 Pth. Lawn Genie Pick Up Mower; Dittson Rock Picker; Jobber Rock Windrower; Vermeer Trencher; Stone Tow Cement Mixer; Agri-Metal Bedding Chopper; A&W 250 Hp. Dynamometer; York Grader (Towable); 4 Wheel Pull-Type Antique Road Grader; Arps 728 3 Pt. Backhoe; Fransgard 3 Pt. Log Winch; Care Tree 30" Tree Spade; Used Cab For AC 190 Or 200. LARGE SUPPLY OF FRONT END LOADERS AND CABS FOR VARIOUS MAKES OF TRACTORS.