

Oklahoma Cattle

Oklahoma City, Okla.

Wednesday, September 22, 1993

OKLAHOMA NATIONAL STOCK-YARDS WEEKLY CATTLE SUMMARY: Compared to last week: Feeder cattle and calves weak to \$3.00 lower. Demand moderate for yearlings; light to moderate for calves. Wheat drilling in Oklahoma is in full swing. Farmers not interested in receiving and conditioning calves at this time. Calf condition softer with increased numbers in fleshy condition; very limited numbers thin and well weaned. Yearling quality plain to average. Weigh condition of yearlings average to moderately full; calves average. Slaughter cows \$1.00-\$2.00 lower. Slaughter bulls steady to \$1.00 lower. 500 cows and bulls sold. Receipts this week 8,330; last week 11,327; last year 7,177. Supply consisted

of 54 percent yearlings and calves over 600 lbs; 40 percent calves under 600 lbs.; and 6 percent cows and bulls. Prices follow with weighted average weight and price in parenthesis.

Feeder Steers: Medium and Large
 Frame 1: 350-400 lbs. (377 lbs.) \$103.50-\$113.50 (\$106.82); 400-500 lbs. (450 lbs.) \$95.00-\$107.00, several lots fancy \$109.00-\$117.50 (\$102.41); 500-600 lbs. (550 lbs.) \$91.00-\$99.50, lot 555 lbs. \$103.00 (\$94.42); 600-700 lb. calves \$86.00-\$93.50, yearlings \$89.00-\$96.00 (650 lbs.) (\$91.97); 700-750 lbs. (725 lbs.) \$85.00-\$90.25 (\$87.75); 750-800 lbs. (772 lbs.) \$84.35-\$88.00 (\$86.10); 800-850 lbs. (821 lbs.) \$81.75-\$87.10 (\$84.57); 850-900 lbs. (868 lbs.) \$82.75-\$84.75 (\$83.69); 900-950 lbs. (921 lbs.) \$82.50; 1028 lbs. \$77.00. **Holstein Steers: Large**
 Frame 2: 376 lbs. \$85.25; 414 lbs. \$79.50; 484 lbs. \$78.25; 500-550 lbs. (537 lbs.)

\$75.25-\$76.50 (\$75.67); 585 lbs. \$73.50; 644 lbs. \$71.75; 691 lbs. \$69.25; 711 lbs. \$69.50; 760 lbs. \$70.00; 850-900 lbs. (869 lbs.) \$64.60-\$67.50 (\$66.68).

Feeder Heifers: Medium and Large
 Frame 1: 300-350 lbs. (329 lbs.) \$96.00-\$97.00 (\$96.80); 350-400 lbs. (382 lbs.) \$91.50-\$97.00 (\$94.13); 400-500 lbs. (450 lbs.) \$85.00-\$94.00 (\$90.86); 500-600 lbs. (550 lbs.) \$83.25-\$88.00, couple lots Brangus \$91.50-\$94.00 (\$85.58); 600-650 lbs. (623 lbs.) \$83.50-\$87.75 (\$84.70); 650-700 lbs. (669 lbs.) \$83.00-\$84.75 (\$83.89); 700-800 lbs. (750 lbs.)



WATER FILTERS

Will Ship UPS



\$199 Ea.

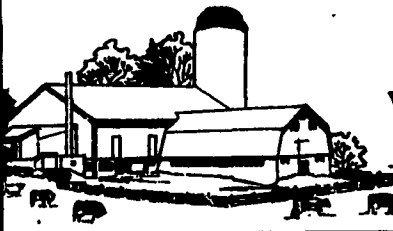
Qty. 128 Case Lot
 Micron Sizes
 1,5,10,20,30,50,100



Myerstown, PA

Call (717) 866-5366

- DRIES WHITE • NO WET FLOORS
 - IS COMPATIBLE WITH DISINFECTANT AND FLY SPRAYS
 - DOES NOT RUB OFF EASILY
 - WASHES OFF WINDOWS & PIPELINES EASILY
- BARN CLEANING SERVICE AVAILABLE WITH COMPRESSED AIR**



To have your barn cleaned with air it will clean off dust, cob webs & lots of the old lime. This will keep your barn looking cleaner & whiter longer.

CALL US ABOUT ON THE FARM FLY CONTROL

Serving Southeastern Pa. And More

BEITZEL'S SPRAYING

Witmer, PA 17585 717-392-7227 or

Toll Free-1-800-727-7228 7:00 AM to 5:00 PM

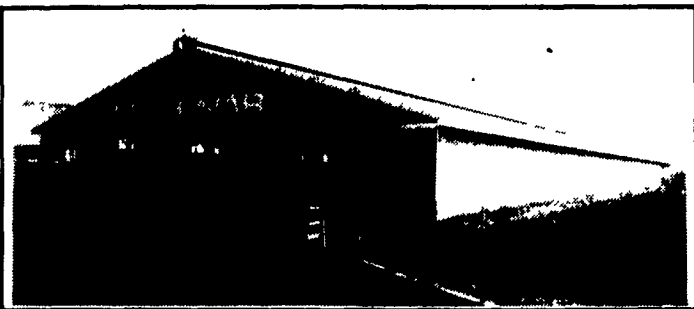
CERTIFIED COMMERCIAL APPLICATORS LICENSED 32 Years Experience INSURED

5 Trucks For Air Cleaning And Whitewashing
 RADIO DISPATCHED TRUCKS

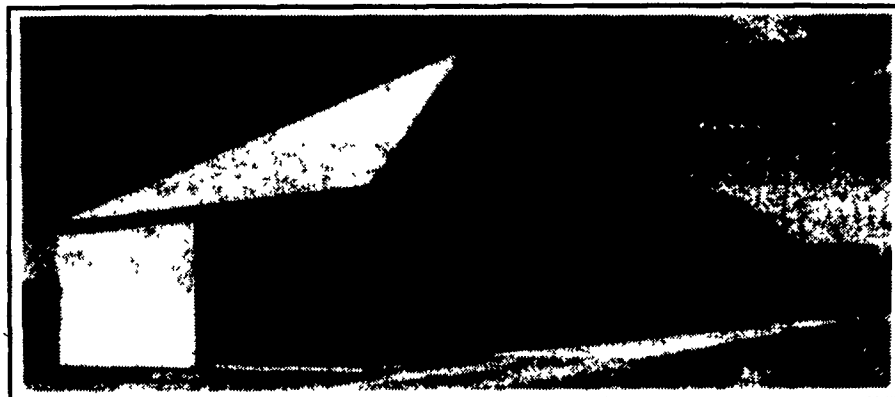
Barn Spraying Is Our Business, not a sideline. Spraying Since 1961

KING CONSTRUCTION CO. -

Specializing In Heifer & Free-Stall Barns!



80'x300' Free Stall Building Built In Maryland



32'x180' Virginia Style Heifer Barn Built In Myerstown

Features: Curtain Controlled Ventilation

WE BUILD IN PA, MD, DE & NJ

Authorized Dealer For **KEYSTONE WAFFLE SLATS**

KING CONSTRUCTION CO.

601 Overy Grove Rd., New Holland, PA 17557

(717) 354-4740 • Phil Van Lieu (Home): (717) 259-9077

\$79.50-\$84.75 (\$82.71); 800-850 lbs. (828 lbs.) \$78.10-\$79.50 (\$79.09).

Slaughter Cows: Cutter, Boning & Breaking Utility Y.G. 1-4 average dressing \$44.50-\$47.75; high dressing \$48.00-\$51.50. Canner and low Cutter \$36.50-\$42.50.

Slaughter Bulls: Y.G. 1 1200-1900 lbs. average dressing \$57.00-\$59.00; high dressing \$60.00-\$60.75; high dressing/

high boning indiv \$64.50.

Replacement Cows: Pretested for Bangs, pregnancy, and age Medium and Large Frame No. 1 mostly average quality: 5 year old Gelbvieh 1550-1775 lbs. 6-8 months bred \$800.00-\$815.00/head 5-7 years old 800-1450 lbs. 3-7 months bred \$600.00-\$690.00/head 9-10 years old 850-1125 lbs. 4-8 months bred \$425.00-\$510.00/head.

4473/4530

Plant them for the Performance

Buy them for the savings

If you're looking for big performance from a medium maturity hybrid, it's tough to beat Funk's G[®] brand 4473 or 4530. And now there's a way to get that performance at substantial savings.

You'll save \$330 when you buy 24 units of each in our 48-unit Performance Pak[®]. Or save \$50 when you buy six units of each in our 12-unit Trial Pak[®]. Either way, you'll get two of our best hybrids for yield, standability, drydown and all-around performance.

Find out how you can get big hybrid performance at big savings. Ask your local Hoffman sales representative today. Or call: **1-800-776-7929**

4473

Relative Maturity: 112 days

- ◆ Produced 196 Bu/A in Lancaster County, Pa. and 207 Bu/A in Seaford County, Del. in 1992.
- ◆ Excellent dual purpose hybrid with high TDN/A.
- ◆ Tassels late for its harvest moisture.
- ◆ Outstanding early vigor and growth.

4530

Relative Maturity: 113 days

- ◆ Averaged 151 Bu/A at 18.2% moisture in Md. state trials.
- ◆ Big yields under eastern disease pressures.
- ◆ Excellent standability and intactness.
- ◆ Attractive field appearance with medium plant height.



Ciba Seeds

Hoffman Seeds, Inc.

Landisville, PA 17538

Call toll free: 1-800-776-7929

Adding Value To Your Seed Investment