

35 TRUCKS & TRAILERS



1985 Volvo White 400 Cat, 13 Speed, 216 WB, Brake Saver, 6 Inch Straight Pipes, All Polished Wheels and Tanks, Neway Air Ride, 730,000 Miles, \$16,000
Or Best Offer. Also PTO and Commercial Hyd Pump and Tank \$300
(717) 738-2072

Haulmark



SALE!!

8x16 FT. GRIZZLY LANDSCAPE (G816B2) w/36" SIDE DOOR REAR RAMP DOOR **\$4,000.00**
TWO ROOF VENTS
8x20 FT. GRIZZLY (G820B2) w/36" SIDE DOOR REAR RAMP DOOR **\$4,500.00**
TWO ROOF VENTS

Ringo Hills Farms Equipment Co., Inc.
1624 Route 212
Quakertown, PA 18951
Phone (215) 346-7340

Call For a Free Catalog

We've Now Moved To A Bigger & Better Location Full Line Ford Cars, Ford Trucks, Lincolns, Mercurys, Jeeps, Eagles

YES!! ENGLE-RISSINGER AUTO GROUP DOES MAKE IT EASIER!!

- Over 300 New & Used Trucks, Vans & 4x4's
- 1990 F350 Dually Crew Cab, XLT, AC, V8, A/OD, Loaded
 - 1988 F350 4x4 Crew Cab, XLT, V8, AT, AC, Power Equipment Group & More
 - 1992 Jeep Cherokee Laredo, A/OD, 4 Dr, Power Equipment Group, Cruise & Tilt
 - 1984 Jeep CJ-7 Hardtop, 6 Cyl., 5 Spd, Only 51,000 Miles.
 - 1991 GMC S-15 Soroma ST, V6, A/OD, A/C, 22,000 Miles.
 - 1992 Ford F150 XLT, V8, A/OD, AC
 - 1991 Bronco XLT, A/OD, AC, 28K miles
 - 1990 Ford F450 diesel dump truck, 5 speed, white cab, just 17K miles
 - 1988 Ford F150 super cab, XLT, 2WD, V8, A/OD, AC
 - 1993 Jeep Wrangler, 6 cyl., 5 speed, PS, brakes, 3K miles
 - 1991 Jeep Cherokee, 2 door, 6 cyl, A/OD, AC
 - 1984 Jeep Grand Wagoneer, V8, Auto, AC
 - 1991 Ford E350 15 Passenger Van 7.3L Diesel, A/OD, AC
 - 1989 Ford F250 4x2 XLT, 351, V8, Auto Trans., A/C, Heavy Hauler
 - 1990 Chevy 3500 Cab & Chassis, DRW, 4x4, A/C, V8, 5 Spd.
 - 1989 Ranger XLT, AC, 5 Spd. 2.3L, 30,000 Miles, Blue & Silver.

ENGLE-RISSINGER AUTO GROUP
Rt. 147 Just North of Halifax
Halifax, PA 17032
The Call's On Us 1-800-242-8075
1-717-896-3421

'93 FORD CREW CABS



IN STOCK:

- (2) '93 Diesel, Stick
- (1) '93 Turbo Diesel (In Stock)
- (1) '93 Centurion Diesel, Stick

SHEEHY LEBANON

FORD • MERCURY • LINCOLN
9-9 Daily, 9-5 Saturday Sheehy Hotline (717) 272-7671 or 533-5293
20TH & CUMBERLAND STS. - RT. 422 WEST

HOSTETLER INVENTORY REDUCTION SALE

TRUCKS

- 1977 Jeep ¾ Ton Pickup, Flat Bed With Cattle Racks, V8 Gas\$1,395
- 1985 Chevy ¾ Ton Truck, 8' Fiberglass Service Body, Small V8 Gas Engine, Automatic, Good Condition.....\$4,450
- 1977 International Cab & Chassis, V8 Gas, 4 Speed, 21,000# GVW.....\$1,995
- 1978 GMC Light Tandem, 40,000# GVW, Gas, 5&2 Speed, Air Brakes, Government Surplus, 22,372 Miles, Fresh Paint....\$5,950
- 8' Pickup Replacement Bodies, All Steel Flatbeds..... \$595
- New 16' Aluminum Grain Body, 48" High Sides, Dump Thru Gate, Looks Great.....\$4,995

TRAILERS

- 2 - Used 5'x10' Utility Trailers, 15" Wheels and Tires, 3000# GVW, Both In Great Shape..... \$825 ca.
 - Just Arrived Older Model 2 Horse Bumper Pull.....Call For Info.
 - Used 18' Moritz Bumper Pull Livestock, Double Deck Rear Section, Solid Trailer.....\$2,495
 - New Kiefer Built 6'x16' Renegade, A True Deluxe Livestock Trailer, Fiberglass Roof, Radials, Beautiful.....\$4,250
 - New 12000# Dump Trailer, 6'x10' Bed, Electric Hydraulic Hoist, 24" Removable Sides.....\$3,295
 - 16' 5 Ton Trailer, 76" Between Fenders, Adjustable Ramps.....\$2,450
- Much More In Stock Please Call For Details



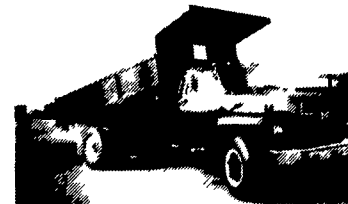
Hostetler Truck Bodies & Trailers
Rt. 322 Millroy, PA 17063
(717) 667-3921



1991 Chevy G30 Beauville 15 Pass., FI 350, AT, AC, PW, PL, Tilt, Cruise, 38,000 Miles. #1642.



1989 Ford E250 Super Cargo, FI 351, AT, PS, PB, AC #1626.



1989 Ford F800 7.8 Turbo Diesel, 5 Speed, 2 Speed Rear, Air Brake, 16' Stake Dump Body, 30,000 GVW, Set Up For Towing Air Brake Trailer, Only 14,000 Mile.

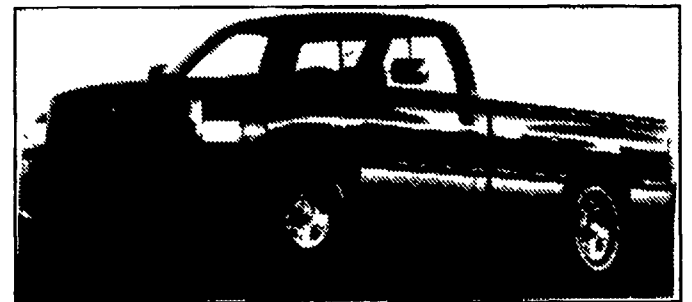


1988 GMC 7000 8.4 Turbo Diesel, 6 Speed, 32,900 GVW, Air Brakes, 11Rx22.5, 20' Hackney Reefer Box, Dual Temp. Control, Thermo King RD 1 Unit, Two Side Doors, Extra Clean #1663.

Four Way Auto Sales

770 West Main St., New Holland, PA 17557
717-354-3199

Introducing A Benchmark Of American Quality



1994 Dodge New Ram T-300 Pickup

- Magnum V6, V8, V10 And Diesel Power Available
- Standard Driver's Air Bag, Side Door Protection Beams, Rear Anti-Lock Brakes
- An Available Individually-Adjustable 40-20-40 Split Bench Seat For Three People
- 4x2, 4x4 - Short & Long Beds

Order Yours Today!



DODGE CHRYSLER PLYMOUTH

"National Award-Winning Dealer"
ROUTE 422, ROBESONIA
• 693-5855

Huntingdon Equipment

Rentals Available **GOOD USED EQUIPMENT**

Huntingdon Valley, PA • 215-672-9667 • 1-800-543-3833 • Eddie



20 Ton P&H Crane 3 Sec Hyd Boom mounted on a 1968 F W D both engine gas (new front 89), fleet maintenance



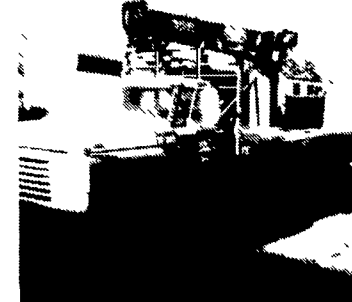
1985 F-600 8 2 Diesel, Auto, 5 Man Cab, Utility With Rollup Door On Rear, Clean, Low Mileage, 1 of 3



1979 Ford V8 10-Speed, Air, 14,000 Lbs Boom, 2 Speed Auger, Upper Controls, 4 Outrigger, Dig Holes-Lift-Put Man In Air This Unit Does It All



Holan 70' Double Bucket 75' working height mounted on 1981 Western Standard, 6x6 Flatbed, CAT 3208, Auto



Need a Lift? We Have A Large Selection Of Boom Trucks Up To 14,000 lbs Cap Some With Post Diggers



Bucket Trucks 28' to 65' Gas and Diesel Call For Details

DIGGER DERRICKS/AERIAL BUCKETS/UTILITY EQUIPMENT