

R & R CAR AND TRUCK CENTER



1981 GMC BRIGADIER, 238 D.D., 10 Spd., P/S, A/B, 35,000 GVW, 12,000 F/A, 23,000 R/A Will Separate.
Call For Details

87 IHC/UD, 800, 210 HP Diesel, 6 Spd., P/S, A/B, 32,800 GVW, Low Miles, 22' Reefer, With Tk. Mdl-50 Fuel Saver & Stdbly.
Call For Details



77 IHC 18' C&C, DT466, 582 Spd., P/S, 30,000 GVW, Recent Eng. Overhaul, New Insp.
Call For Details

CALL RAY LEED:
(717) 560-4901



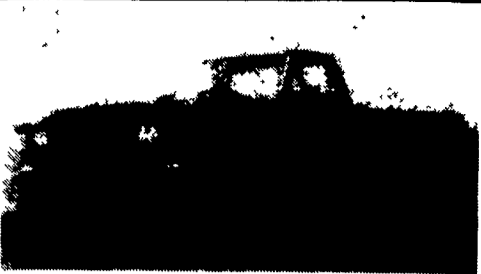
1993 Ford XL F350 4x4, Crew Cab, 7.3 Diesel, 5 Speed, PS, PB, Air, Cruise, Tilt, AM-EM Cass., 14,000 Miles With Bal. of Factory Warranty, Ex. Cond.
\$22,500



1987 Chevy Scottsdale K20, 4x4 Suburban, 350 FI, Auto, PS, PB, Air With Ladder Rack, 25,000 Orig. Miles, New Radials, Ex. Cond.
\$11,500

A&J Auto Sales

798 E. Main St. Rt. 322 East, Ephrata, PA 17522
717-733-2873



1987 Ford F250 XL 6.9 Diesel, Auto, PS, PB, Air, Tilt Wheel, Cruise, Power Door Locks, PW, AM/FM Cass.
\$5,995
Countryside Auto Sales
Manheim, Pa.
717-664-2170 Office or
717-865-3488 Home

HENDERSON

TARP & TRUCK COVER SERVICE
REAR 8 ANN STREET MIDDLETOWN, PA 17057
PH. (717) 944-5865

Interstate 283 East-West, Take Harrisburg Airport Exit to Middletown or Take Exit 19 Pennsylvania Turnpike. Just 15 minutes from Harrisburg, PA.

★ WE SPECIALIZE IN ALL TYPES OF FARMING COVERS ★

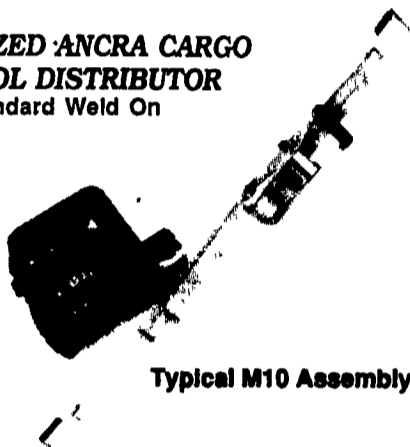
AUTHORIZED AN CRA CARGO CONTROL DISTRIBUTOR
Standard Weld On

MANUFACTURERS OF CANVAS & VINYL TARPS

HERE'S A LISTING OF A FEW TYPES:

- 1. Steel Tarps
- 2. Mesh Tarps
- 3. Lumber Tarps
- 4. Dump Tarps
- 5. Open Top Tarps
- 6. Machinery Tarps
- 7. Roll Tarps

- Repair Dept. at your Service.
- We Accept Master Charge & Visa.
- We Ship Anywhere!



Typical M10 Assembly

We Sell & Install Roll Tarps - Call for Pricing!

WE ALSO SELL HEADACHE RACKS

<p>(7) '80-'84 Freightliner; 300, 350, 400 Cummins, 9 Spd., 13 Spd., PS, AC, Excellent Rubber & Brakes \$6,500-\$7,500</p>	<p>'84 GMC Astro S/A Tractor, 6V92 335 HP; 9 Spd., PS, AS, Air-Ride. Ready To Work \$5,990 Make Offer</p>	<p>'80 GMC Brigadier; 6-71T Detroit, 7 Spd., AC Clean Single Axle Tractor</p>
<p>'81 GMC Cube Van, 350; AT, PS, 12' Body Only \$2,500</p>	<p>89 Kenworth W900; 350 Cummins; 9 Spd; PS, AC, 42" Bunk. Very Clean Truck Call For Price</p>	<p>74 Mack F-Model; 673 Mack; 10 Spd.; AC, Very Clean \$3,000</p>

We Buy Used Trucks & Trailers

H & L SALES CO.

3830 N George St., Manchester, PA 17345
3 Miles North of York
717-764-2656

Mark VII - Pickups - Broncos - Bronco II - Stake Body - Crew Cab

Custom Vans

XLT

Grand Marquis

Marquis

Lynx

Topaz

Diesel Pickups

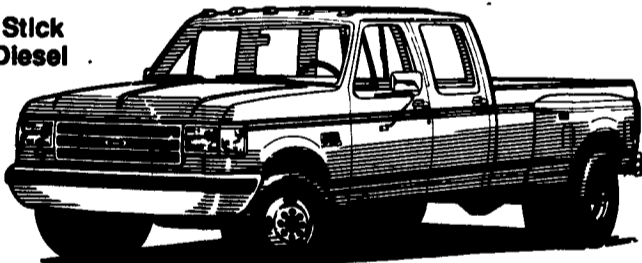
Mustang

Ford

'93 FORD CREW CABS

In Stock

- (2) '93 Diesel, Stick
- (1) '93 Turbo Diesel (In stock)
- (1) '93 Centurion Diesel, Stick



'93 FORD F-150

#1929, 6 Cyl., 5 Spd, PS, PB, AM-FM St., Rear Step Bumper
DELIVERED PRICE

\$11,815*



'93 FORD RANGER XLT Sliding Rear Window, 5 Spd., Cast Alum. Wheels, 60-40 Split Bench Seat



\$10,523

'93 CONVERSION VANS

3 To Choose From!

V8, AC, Automatic, PS, PB, TV, Loaded, HI-Tops & Low Tops



'92 FORD RANGER 4 Cyl., 5 Spd., AM/FM Cassette, Buckets #P1651A
.....On Sale \$9,793



'93 FORD AEROSTAR XLT Extended, All Wheel Drive, 21,000 Miles, Like New #P1734 ...Like New \$21,400



'92 DODGE DAKOTA Extra Cab, 3.9 V6, 4 Spd., 18,000 Mi., One Owner, #P1604B
.....On Sale For \$12,288



'92 CHEVY C1500 4x4, V8, AT, AC, One Owner, Local Trade, 23,000 Miles, #1716A
.....On Sale \$16,988



'91 FORD EXPLORER XLT 4 Dr., AT, Cassette, Very Clean #P1736
.....Special \$17,800



'92 FORD F150 XLT 302 V8, 4 Spd., 1-Owner #1609A
.....\$14,989



'90 FORD F250 SUPERCAB 4x4, 7.3 Diesel, AT, Absolutely Loaded, Captains Chairs, Low Miles #P1729
.....\$18,977



'92 FORD F250 5.8 liter, AT, 30,000 Mi., Like New #P1675...Sale Price \$14,999



'91 FORD E150 WINNEBAGO VA, AT, TV, Loaded, 15,000 Miles, #P1664
On Sale \$18,988

'88 Bronco II XLT, V8, 4 Spd., AC, Local Trade, Super Clean #P1630B \$11,679

'90 Ford Bronco, Eddie Bauer, 8 Cyl., AT, Loaded, Green/Tan, 35,000 MI. #P1708 \$17,897

'90 Ford F150 XLT, 6 Cyl., 5 Spd., 13,000 Miles, 2-Tone, #P1684 \$14,379

'90 Ford F190 XLT, 6 Cyl., 5 Spd., AC, 28,000 MI. #1967A \$10,999

'91 Ford Aerostar, AT, AC, Cassette, Dark Blue #1828A \$15,897

'90 Dodge Caravan SE, White, AT, AC, 38,000 MI. #1974B \$12,997

'90 Ford F150 XL, 302 V8, AT, AC, #P1653 \$14,999

'88 Jeep Grand Wagoneer, 53,000 MI., V8, Loaded w/Leather #1224A \$12,999

Unless This Emblem Is On Your Car Or Truck You Probably Paid Too Much

SHEEHY LEBANON

SHEEHY FORD LINCOLN MERCURY INC.
20th & Cumberland St., Lebanon

Parts Dept. Open
Daily 8-5
Sat. 8-12
717-273-8168

9-9 Daily
9-5 Sat.
717-272-7671



Tempo - Cougar - Continental - Town Car - 4x4 - Box Van - Rangers