

**"FREE CATALOG"
CALL OR WRITE**

DIRECTIONS TO OUR MIDDLETOWN STORE- On your road map, we are on Route 230 mid way between Middletown & Elizabethtown. Take the Toll House Rd. exit off Rt. 283, turn and go to stop at Rt. 230, go east on 230 1-1/2 ml. on the right.



**DEPARTMENT L F
4294 EAST HARRISBURG PIKE
MIDDLETOWN, PA 17057**

**HOURS: Mon.-Fri. 9-6
Saturday 9-2
Sunday - Closed**

(717) 944-0318



4x8, 5x10, 6x12 UTILITY TRAILERS STARTING AT *499



ALL TRAILERS BUILT "IN OUR SHOP"



STANDARD FEATURES - 18" DIAMOND STEEL DECK, BOX TUBE FRAME, JACKS, CHAINS, ALL WHEEL ELEC. BRAKES & MORE. USE YOUR OWN WHEELS/TIRES & SAVE \$225 OFF OUR LOW PRICE OF \$1,699. WOOD DECK AVAIL.



"TRAILER PARTS"
ANGLE & CHANNEL IRON, BOX TUBING, LIGHTS AXLES, COUPLERS, WIRING, CHAINS & TIEDOWNS, Etc., Etc.



CLASS III HITCH RECEIVER
10,000 Lb. MGTWR, In Stock For Most Domestic & Import Pickup Trucks & Vans
FOR MOST POPULAR FORD CHEV. & DODGE PICKUPS and FORD EXPLORER KIT
OTHER APPLICATIONS UP TO \$99.99

\$79.95

**AUTOBODY PARTS,
PAINTS & SUPPLIES**



- 79-79 CHEVY, FORD, TK FENDERS \$39.95-\$49.95
- BODY FILLER-CASE OF 4-GAL. \$33.95
- ACRYLIC ENAMEL PAINT AS LOW AS \$28.95
- URETHANE HARDENER DOES A GAL. \$12.95
- SANDPAPER-6" DA SELF ADHESIVE, 100 PER ROLL LOW AS \$16.50. ALSO DRY BACK DA, WET & DRY SHEETS, LONG FILE!
- 100% OF OTHER ITEMS AT BIG SAVINGS!!

'87 Ford XL HD F250, super cab, 460 auto, trailer towing package, PS, PB, cruise, tilt, air, AM-FM cassette, like new condition, \$10,500. 717-733-2873

'87 Ford XL F250, 4x4 w/8' stake body, 351 auto, PB, PS, AM-FM, dual tanks, 8,600 GVW, 41,000 miles, excellent condition, \$8,975. 717-733-2873

'88 Chevy Silverado 4x4 Blazer, 350 FI, auto, PS, PB, PW, PDL, cruise, tilt, air, AM-FM stereo, aluminum whls., black & silver, 1 owner, excellent condition, 88,000 miles, \$8,600. 717-733-2873

'88 Dodge D250, 1/2 ton, 318 EFI, auto, PB, PS, AM-FM, Michelin radials, 6,600 GVW, excellent condition, \$6,700. 717-733-2873

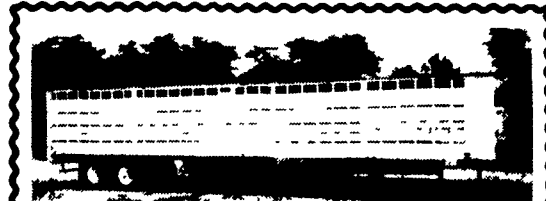
'89 Chevy, 1Ton Silverado, 40,000 Miles. \$6695; '89 Chevy 1/2 Ton 4X4, 80,000 Miles. \$7995; '88 Ford 1/2 Ton 4X4 \$4995; '85 Dodge 1/2 Ton 4X4, 60,000 Miles \$3995; '87 Chevy 4X4 \$3995; '89 Dakota V6, Auto. \$3995; '81 Chevy, Short Box, 4X4 \$2695. (717)942-4406.

2 1977 Mack trucks, w/or without tanks; 3 tanks: 2-4000 gal., 1-5300 gal. 717/582-2355 after 7:30pm except Thur.

2 1985 Peterbuilt cabovers, 9-speed O/D trans., 22.5 rubber, 1 w/350 Cummins, 1 w/350 Cat, both excellent. 609/455-9238.

1988 Zimmerman trailer, dual axle, 10,000 GVW, electric brakes, full ramp, excellent condition, \$2850 OBO. 215/269-4344.

20' Steel Grain Dump w/60" Removable Sides, Triple Barn Door Type Tailgate w/Grain Gate. \$4500. (301)478-2156.



48 Ft. Aluminum Stock Trailer
Tool Box, Side Door, Ramp
"Like Brand New"
609-268-0396



INTERNATIONAL 6x6 BRIDGE TRANSPORTING STAKE BODY TRUCKS

Front Winch, PS, Air Brake, 1400/20 Tires, 21 ft. Bed with removable steel racks. Continental 6 cyl. engine. LIKE NEW 600-2,500 Miles. Excellent for off road heavy duty cargo transporting with their all wheel drive and ability to climb a maximum grade of 70 degrees. Double Frame. A must for every farmer \$9,450 Each.

(814)834-1018 St. Marys, Pa.

Anthony Landis

AUTO BODY & SALES

1701 B Division Hwy. New Holland, PA • 717-355-0641

Specializing In Rebuilt Collision Damage Vehicles



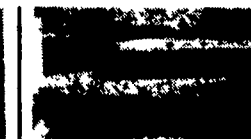
'87 GMC S-15 SIERRA Long Box, V6 F1, 5 Spd., Cloth Seat, 2 Tone, Runs & Drives, Light Damage, 52,000 Mi. \$2,650



'92 FORD RANGER Shortbox, 2.3 FI, 5 Spd., Only 1,566 Miles, No Frame Damage \$3,000



'88 FORD RANGER Shortbox, 2.3L, 5 Spd., 80,000 Miles, Dented Around, Runs & Moves \$1,500



'88 DODGE GRAND CARAVAN LE V6, AT, PS, PB, AC, Tilt, Cruise, Cass., PW, PDL, Pwr. Seat, 59,596 Miles, Rollover- Major Damage \$3,500



'88 PLYMOUTH VOYAGER SE V6, AT, PS, PB, AC, Tilt, Cruise, Cass., 66,000 Miles \$3,900

Nicest Pre Owned Trucks Anywhere!

RTE. 422, WEST LEBANON, PA

(Across From Lebanon Valley Mall)



717-274-2000

FAX

717-274-2717

Business Hours
Mon-Fri 9-9
Sat 9-4

THIS IS JUST A SMALL PORTION OF OUR HUGE INVENTORY



The Cleanest '88 Dodge D-100 4x4, 41,000 Miles, Unbelievably Clean, 318, Auto, You Gotta See It



Super Cab Dually '92 Ford F-250 XLT Lariat Like New, 16,000 Miles, 460 I.L., AT, OD, AC, Captain Chairs, Custom Wheels, A Real Looker



Box Trucks '89 Ford Super Duty 12 Ft. Box '89 Ford Super Duty 14 Ft. Box



4x4 Diesel Super Cab '89 Ford F-350 XLT Lariat, 7.3 Auto Overdrive, AC, Captain Chairs, Good Looker, 37,200 Miles



460 4x4 '88 Ford F-250 XLT Lariat Real Strong, Atuo, AC, 8800 GVW, New Brakes, Fully Serviced & Ready To Work



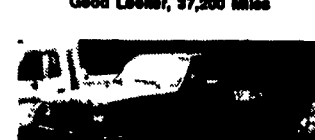
Diesel Cargo Van '90 Ford E-350 XL 7.3 Diesel, AT, OD, Dual Tanks, Very Clean



Diesel 4x4 '91 Ford F-250 XLT Lariat 7.3 Diesel, 5 Sp OD, AC, 8800 GVW, 35,000 Clean Miles



Cummins Turbo Diesel '89 Dodge 250 4x4, Auto Very Clean, Tow Pkg., Lock Out Hubs



Flatbed '89 Ford F-350 7.3 Diesel, Auto, AC, 48,000 Actual Miles



4x4 Utility '88 Ford F-250 4 Wheel Drive, Enclosed Reading Box, 5 Sp, OD Trans, Dual Tanks, 67,000 Miles



Farm Special '89 Ford F-250 Great Fuel Mileage, Fueling 300 6 Cyl., 5 Spd. OD, AC, Dual Tanks, Drives & Runs Super \$8,900



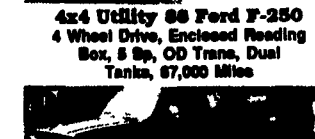
Diesel Dually '89 Ford F-350 Super Cab WOW What A Truck, 7.3 Diesel, AT, AC, Tow Pkg., Captain's Chairs



Enclosed Utility '88 Chevy 3500 350 I.L. Auto, Single Rear Wheel, Reading box, They Don't Come Any Near, 31,000 Miles



4 Wheel Drive Chassis '89 Chevy 3500 Rare Find, Long 181 Wheelbase, 360 I.L., 4 spd., 37,000 Miles



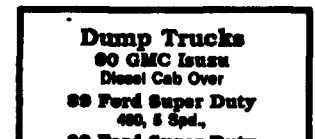
4 Door 4x4 '88 Chevy '90 Dually Awesome Power 42,000 Miles, 454 I.L. Auto, AC, Tow Pkg. Look & Drive



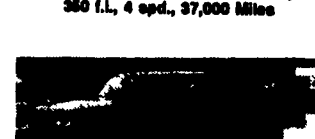
Super Duty Chassis '88 Ford F-450 Local Trade, 400 I.L. 5 SP OD, Long Wheel Base \$9,900



4 Door 4x4 '88 Chevy '90 Dually All Dressed Up & Looks Good, 545 AT, AC, Silverado 2 Tone Paint, 48,000 Miles



Dump Trucks
'89 GMC Isuzu Diesel Cab Over
'89 Ford Super Duty 400, 5 Spd.,
'89 Ford Super Duty Diesel, Stake Body
'89 Ford Super Duty Diesel, 5 Sp., 48,000 Miles
'88 Ford Super Duty 400 5 Sp., 22,000 Miles



4 Door Diesel '89 Ford F-350 XLT Lariat 7.3, 5 Speed, AC, Very Strong, Ready To Pull



4 Door 4 Wheel Drive '88 Ford F-350 XLT Lariat Only 33,000 Miles, Runs & Drives Nice, Fuel Inj., V6, Auto, AC



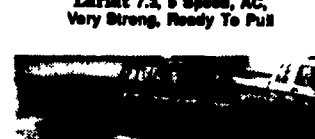
Cube Vans '89 Ford E-350 Diesel, Auto '88 Ford E-350 44,000 Miles, Auto



Save Big \$\$\$ '89 Ford F-250 XLT Only 2,000 Miles, 361 V8, Auto, AC, Loaded, Power Angle Piew CALL NOW



Super Cab 2 Wheel Drive '91 Ford F-250 XLT Lariat Perfect, 28,900 Original Miles, 351 I.L. Auto, AC, 8,800 GVW, The Nicest Anywhere



Diesel Super Cab '89 Ford F-250 4x4 37,200 Miles, 7.3 Diesel, AT, OD, AC, All Options, Tow Pkg.



Super Duty '89 Ford F-450 Factory Warranty Remaining, 18,300 Miles, 7.3 Diesel, AT, AC, 9Hl. 137 Wheelbase