



SEPTEMBER 20 26, 1993

AUTUMNAL EQUINOX, SEPTEMBER 22.

**THE GREAT ICE CREAM CONE CONTROVERSY**

Most folks agree that the public debut of the ice cream cone was at the 1904 St. Louis World's Fair. In one legend, ice cream vendor Arnold Fornachou, located next to waffle baker, Ernest Hamwi, ran out of paper bowls. One of the men rolled up thin waffles and the cone was born. However, at least one claim predates the fair. Italo Marchiony began selling lemon ice from a pushcart in New York City soon after immigrating in the late 1800s. Business was good, and Marchiony devised cones, first made of paper and then of pastry, to hold his frozen treat. On September 22, 1903, long before the fair opened, he filed for a patent on his cone mold, and it was granted to him on December 15, 1903.

Each day provides its own gifts.

**TIP OF THE WEEK**

Keep a cup of water in the microwave to prevent accidentally operating the oven when empty.

**EARTHWISE**

Fall arrives, and we begin to shut the windows, close off air leaks, and seal ourselves in with our indoor air pollution. Where does the unhealthy air come from? Primarily from the things we use and have in our homes. Carpets, adhesives, particle-board cabinets, vinyl furnishings, chlorine cleaning products, and the sprays we use on our bodies and furniture all make their own gaseous contribution to the air we breathe. In the next few columns we'll explore alternatives to reduce the "bad air" inside our homes.

**GREEN BEANS WITH RED ONIONS**

**Dressing:**  
1 tablespoon red wine vinegar  
1 teaspoon Dijon mustard  
3 tablespoons olive oil  
**Beans:**  
1 pound green beans  
1/2 cup chopped red onion  
salt and pepper to taste

Prepare dressing: add vinegar to mustard and whisk in the oil. Set aside. Wash and trim beans and cut into 2-inch lengths. Steam until crisp-tender. Drain, place in a bowl with the onion, and toss with dressing. Add salt and pepper. Cool to room temperature before serving.  
Makes 4 servings.

**THE OLD FARMER'S WEATHER FORECAST**



**NORTHEAST:** Seasonable and sunny, cold snap west then some showers and milder; turning cold north.

**SOUTHEAST:** Rainy and seasonable to cool; clear and hot then showers west.

**MIDWEST:** Clear and warm then rainy and cooling; finally clearing.

**NORTHWEST:** Rainy and cool, sunny and mild coast; clearing and turning warm.

**SOUTHWEST:** Rainy and cool, thunderstorms desert; clearing and warming.

**Greencastle Livestock**

Greencastle, Pa.  
Report Supplied by Auction  
September 13, 1993

616 SLAUGHTER CATTLE RECEIPTS. 202 HEAD SLAUGHTER STEERS. MARKET STEADY.

HIGH CHOICE AND PRIME 2-4, 74.00-75.00; CHOICE 2-3 950-1075 LBS. 68.00-72.00; CHOICE 2-3 1075-1375 LBS. 71.00-74.00, FEW 76.50; CHOICE 2-3 OVER 1375 LBS. 67.00-73.00; CHOICE 4 ALL WEIGHTS 64.00-69.00; SELECT & CHOICE 1-2 950-1100 LBS. 67.00-72.00; SELECT & CHOICE 1-2 1100-1375 LBS. 66.00-72.00; SELECT & CHOICE 1-2 OVER 1375 LBS. 63.00-70.00.

HOLSTEINS: CHOICE 2-3 1050-1450 LBS. 61.50-66.75; SELECT 1-2 1050-1450 LBS. 55.00-61.00.

SLAUGHTER HEIFERS: 62 HD, STEADY. CHOICE 2-3 850-1000 LBS. 67.00-72.75; CHOICE 2-3 1000-1250 LBS. 70.00-75.00; CHOICE 4, ALL WEIGHTS 64.00-70.00; SELECT & CHOICE 1-2 850-1000 LBS. 64.00-70.00; SELECT AND CHOICE 1-2, 1000-1250 LBS. 65.00-71.50.

HOLSTEINS: CHOICE 2-3 1000-1350 LBS. 59.00-64.75; SELECT & CHOICE 1-2 1000-1350 LBS. 54.50-59.00.

SLAUGHTER BULLS: 30 HD. TREND: STEADY TO WEAKER. YIELD GRADE 1 ALL WEIGHTS 60.00-70.00; YIELD GRADE 2 ALL WEIGHTS 53.00-59.50.

BULLOCKS: 14 HEAD. CHOICE 1-3 950-1150 LBS., 60.00-64.50; CHOICE 1-3 1150-1375 LBS. 62.00-67.00; SELECT

1-2 950-1250 LBS. 67.00-72.75.

COWS: 308 HD. TREND: STEADY. BREAKING UTILITY & COMMERCIAL 46.00-51.00; CUTTER & BONING UTILITY 45.00-52.50; CANNER & LOW CUTTER 44.00 & DOWN.

STOCKER & FEEDER CATTLE RECEIPTS: 249 HD., WEAKER. BEEF TYPES: 200-400 LBS. STEERS 78.00-104.00, BULLS 75.00-99.00, HEIFERS 75.00-98.00; 400-600 LBS. STEERS 78.00-92.00, BULLS 75.00-81.00, HEIFERS 76.00-84.00; 600-800 LBS. STEERS 75.00-84.00, BULLS 66.00-72.00, HEIFERS 72.00-80.00; 800-975 LBS. STEERS 70.00-76.50, BULLS 60.00-65.00; HEIFERS, 66.00-71.00.

HOLSTEIN AND DAIRY CROSS: 200-400 LB. STEERS 75.00-81.00, BULLS 75.00-82.00, HEIFERS, NONE; 400-600 LB. STEERS 68.00-74.00, BULLS 65.00-67.00, HEIFERS, NONE; 600-800 LB. STEERS 60.00-67.00, BULLS 58.00-64.00, HEIFERS, NONE; 800-975 LB. STEERS 52.00-59.75, BULLS 52.00-57.00, HEIFERS, NONE.

CALVES: 629 HD. VEAL CALVES. TREND: STEADY. CHOICE 150-300 LBS. 90.00-110.00; GOOD 150-300 LBS. 80.00-100.00; GOOD 100-150 LBS. 70.00-90.00; GOOD 80-100 LBS. 60.00-75.00; STANDARD 80-100 LBS. 50.00-65.00; STANDARD 80 LBS. & DOWN 50.00 AND DOWN.

CALVES RETURNING TO THE FARM. TREND STEADY. HOLSTEIN BULLS OVER 100 LBS. UP TO 187.00; UNDER 100 LBS. UP TO 184.00; HOLSTEIN HEIFERS OVER 100 LBS. UP TO 215.00; UNDER 100 LBS. UP TO 195.00; BEEF TYPE BULLS OVER 90 LBS. UP TO 220.00; BEEF TYPE HEIFERS OVER

90 LBS. UP TO 175.00.

SHEEP & LAMBS: 149 HD. LAMBS: TREND: 2.00-5.00 HIGHER. CHOICE 80-100 LBS. 56.00-61.00; 100-120 LBS. 52.00-57.00; 120 AND OVER 43.50-57.00; MEDIUM AND GOOD ALL WEIGHTS 55.00-63.00; LIGHT LAMBS 65.00-78.00.

SHEEP: EWES LEAN 30.00-37.00; EWES FAT 20.00-30.00; YEARLINGS 34.00-41.00; BUCKS 21.00-29.00.

GOATS: 89 HD. SMALL 18.00-33.00; MEDIUM 34.00-58.00; LARGE 59.00-101.00.

HOGS, SOWS & BOARS: 155 HD., TREND STEADY. HOGS, BARROWS & GILTS: 210-250 LBS. 45.00-48.00; 250-260 LBS. 44.00-46.50; 260-270 LBS. 42.00-44.50; 270-300 LBS. 40.00-44.00. LIGHT HOGS: 140-180 LBS. 33.00-38.00; 180-210 LBS. 36.00-42.00.

SOWS: TREND 1.00 HIGHER. GOOD SOWS UNDER 400 LBS. 35.00-39.50; GOOD SOWS OVER 400 LBS. 36.00-41.50; CULL SOWS ALL WEIGHTS 30.00 AND DOWN.

BOARS: TREND STEADY. 180-210 LBS. 30.00-33.50; 210-260 LBS. 31.00-34.50; 260-300 LBS. 30.00-33.00; 300 LBS. AND OVER 29.00-31.00.

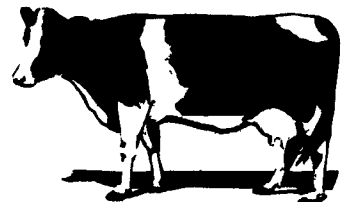
SALE EVERY MONDAY AT 2:00 P.M. & EVERY THURSDAY AT 1:00 P.M.

HAY & STRAW SALE EVERY MONDAY & THURSDAY AT 11:30 A.M.

SPECIAL FEEDER PIG SALE: SATURDAY, SEPTEMBER 25, AT 1:00 P.M.

SPECIAL FEEDER CATTLE SALE: FRIDAY, OCT. 1, 7:15 P.M.

**Bovine III**



**What is BOVINE III?**

- A unique combination of vitamins and trace materials formulated to perform specific functions in the dairy animal.

**Why BOVINE III?**

1. Lessens foot & leg problems
2. Maintains body condition without use of added fats
3. Increases blood function
4. Increases breeding efficiency

**Dealers:**

Lancaster County	Bedford County	Lebanon County	Harrisonburg, VA
Ray Brechbill	Bill Baker	Skip Heisey	Jerry Fawley
(717) 626-5266	(814) 766-3261	(717) 272-9879	(703) 433-0024

Service Also Provided To Other Areas

**Ag-Pak**

2401 E. King St., Lebanon, PA 17042  
(717) 272-8985  
FAX (717) 272-2422

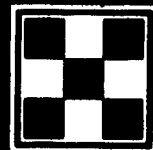


**Purina Mills**



Are You A Current Pork Producer  
OR  
A Future Pork Producer  
And

Want Your Income To Reflect  
Your Performance  
THEN: Ask About Our Alternative  
"Hog Contracts"  
1-800-873-5300



Purina Mills, Inc.

Leaner pork for leaner people.

C.B. HOOBER & SON, INC.  
Intercourse, PA  
(717) 768-8231

**HOOBER**  
TWO LOCATIONS

HOOBER EQUIPMENT, INC.  
Middletown, DE  
(302) 378-9555

The Saving Place

**ORDER NOW FOR COOL SAVINGS  
On ANTI-FREEZE**

Drums: \$149.95

Case Lots (6 gal./case): 1-4 cases \$3.30/gal.  
5+ cases \$2.97/gal.

Prices Good While Inventory Is On-Hand.

**WE SHIP PARTS DAILY**

Via FED. EXP. - UPS - PPSH - BUS - AIR FREIGHT, ETC.

**HOURS**

Mon.-Fri. 7 AM-5 PM; Sat.: 7 AM-Noon

CALL US...

It Could Be We Have It



Authorized UPS Station

