

**Public Auction Register**

Closing Date Monday 5:00 P.M.  
of each week's publication

THURS OCT 28 - 8 30AM  
Valentine Bros Nursery,  
4889 Hopper Hwy, Cosby,  
Tenn. In Ground, Ever-  
greens & Shades, Beautiful  
Hemlock Bob Reimold,  
auct.

SAT OCT. 30 - Indiana  
Classic, Goshen, Ind  
Brown Swiss Enterprises,  
Inc.

SAT. OCT. 30 - Nittany  
Lion Fall Classic - State  
College, Pa. Harry H  
Bachman, auct

SAT OCT. 30 - 8 30AM  
Estate Auction, Mahantongo  
Valley Farm & Wood-  
lots, 2 miles E of Pillow &  
Rt 225; 4 miles W of Kling-  
erstown; turn N at Green-  
house Rd to 1st Lane East  
to 2nd Farm in Jordan  
Twp., Lower Northumber-  
land Co., Pa 20 miles S. of  
Sunbury; 40 miles NE of  
Harrisburg Farm Equip,  
Antiques, collectibles,  
guns, coins, household  
items. Estate of Allen H.  
Troutman. Deibert, aucts.

SAT. OCT. 30 - 9AM, Valu-  
able Real Estate, House-  
hold Goods, Antiques &  
Car. Located On South  
East Side Of Intercourse  
Turn Off Rt. 272 South On  
Evergreen St. To Sale At  
50 Evergreen St., Leacock  
Twp., Lanc. Co., Pa Terms  
By, Ivan W. & Martha B.  
Bauman. Robert E. & Jef-  
frey R. Martin & Randal L.  
Ranck, Aucts.

SAT. OCT. 30 - 9AM, Farm  
& Orchard Equipment.  
Located Off Interstate 83  
Exit 11, Take Board Road  
Toward Manchester, Go To  
Willow Springs Road, Turn  
Left To 1st Farm Lane On  
Right. Seller, H.S Gross &  
Sons. Rentzel's Auction  
Service.

**NOVEMBER**

MON. NOV. 1 - 6:30PM  
Wholesale Furniture. A&C  
Difffenbach Auction Inc.

WED. NOV. 3 - 6:30PM  
Winross Trucks & Toys.  
A&C Difffenbach Auction  
Inc.

FRI. NOV 5 - 6PM, Fall  
Heifer Sale Located Belle-  
ville Livestock Market, Bel-  
leville, Pa For More Infor-  
mation Call Eugene Glick.

FRI. NOV. 5 - 7PM, Horse  
Sale. Located At New Hol-  
land Sales Stables, Inc.,  
New Holland, Pa.

SAT. NOV. 6 - Structural  
Steel, Etc., Farm Equip.  
Located At 980 Avon Dr.,  
Shippensburg. Owner,  
Janet Gonsuch. Andrew  
Martin Auct.

SAT. NOV. 6 - 9AM Real  
Estate, Household goods,  
Tools, Antiques, Farm  
Related Items, Farm  
Equip., Farmall C. 41 Deck  
Drive, Myerstown, Bethel  
Twp., Berks Co., Pa. By  
Mildred W. Hess. Nelson L.  
Ebersole, auct.

SAT. NOV. 6 - 9AM, Estate  
Auction. Located 4 Miles  
East Of Klingertown, 4  
Miles West Of Rt. 125, Turn  
West At Jack's Spot Cafe  
And Watch For Auction  
Sign In The Village Of  
Rough & Ready Or From  
I-81, Exit 34, Take Rt 25

West To Sacramento, Turn  
North 1st Road Past Kling-  
er Chevrolet, Cross Over  
Mahantongo Mountain,  
Watch For 1st Two Farms  
In Upper Mahantongo  
Township, Western Schuy-

kill County, Pa. Estate Of  
Hettie Ursula Knorr. Mike &  
George Deibert, Aucts.

SAT. NOV. 6 - 9AM, A Pri-  
vate Collection Of 500 Milk  
Bottles, Milk Related Items

As Baby Bottles, Advertis-  
ing Items, Crates, Milk Box-  
es, Juice Bottles, Cottage  
Cheese Jars. Located At  
Brickerville Fire Hall Just  
Off Of Rt. 322 West Of

Ephrata In The Village of  
Brickerville, Pa., Lanc. Co.  
Terms By Levere C. Nitch-  
man. Sale Conducted By  
Snyder's Auction Service,  
Aucts.

**Dairy and Livestock Sales**

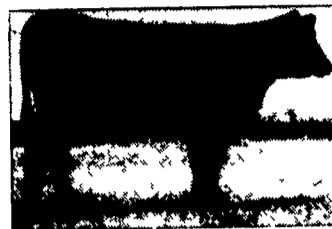


**Known for Great Females —  
Annual Production Sale  
Noon • Saturday, September 25, 1993  
At the farm near Mercer, Pennsylvania**

**VDAR Beauty 174**

Selected as the featured heifer of a past NILE Sale in Montana, this daughter of Rito 2100 GDAR is bred exactly like the \$25,500 top-selling cow of the 1992 Cow Power Sale. This proven embryo donor sells with a June herd sire prospect at side, open and ready to flush. Progeny of her outstanding herd sire son, MB High Pock-et Lad 0050, will be the featured sire group of this outstanding sale offering.

BIRTH WEIGHT	WEANING WEIGHT	MILK COMB	YEARLING WEIGHT
EPD ACC	EPD ACC	EPD ACC	EPD ACC
+5.3	41	+31	38
+17	33	+33	+53
			22



**MB Rachel 9020**

This fantastic four-year-old daughter of Leachman Prompter from a dam by Pine Drive Big Sky descends from a grandam who is a maternal sister to Leachman Fullback. Her 1992 heifer calf sold for \$3,800 to Fairfield Farms in the 1992 McKean Bred Sale.

BIRTH WEIGHT	WEANING WEIGHT	MILK COMB	YEARLING WEIGHT
EPD ACC	EPD ACC	EPD ACC	EPD ACC
+4.3	31	+30	32
+17	28	+37	+56
			27



**MB Primrose Lady 3107**

Calved March 4, 1992, by MB Rito 0072, her dam is a powerful four-year-old daughter of GDAR Executive 727.

For your free reference catalog, contact anyone in the office of the Sale Managers, TOM BURKE AND DICK BECK, AMERICAN ANGUS HALL OF FAME, at the WORLD ANGUS HEADQUARTERS, Box C-2, Smithville, MO 64089-0817 (816) 532-0811. Auctioneer: Tommy L. Williams



**RR 2100 Georgina 9980**

This powerful four-year-old daughter of Rito 2100 GDAR sells with a March heifer calf at side by Leachman Alloy.

BIRTH WEIGHT	WEANING WEIGHT	MILK COMB	YEARLING WEIGHT
EPD ACC	EPD ACC	EPD ACC	EPD ACC
+4.1	37	+34	33
+17	28	+39	+37
			28



**MB Susanna 3105**

Calved March 3, 1992, this daughter of Hyline Rito 5J8 278 descends from two generations of Pathfinder. Dams from the famous Cedar Hill Susanna Family.

Rt. 4 • Mercer, PA 16137  
(412) 376-2595

Greg McKean (412) 475-4450

**McKean Brothers**

**Water Dairy & Guests.**

**Limousin Opportunity Sale**

**Saturday, September 25, 1993 - Noon**

**Culpeper Agricultural Enterprises, Inc.  
Culpeper, Virginia  
Selling 70+ Lots**

One-fourth of the offering will be polled with several black cattle selling. The sale represents a near dispersal of the Water Dairy Limousin herd. Three heifers are being kept to rebuild with — everything else sells! The get, service, and sale of FF Midnight Magic 009Y is certain to be a highlight of the sale. He's a black polled son of Wulfs Midnight 6244W and goes back to WRC Punch on the maternal side of his pedigree.

Sale Site Phone: 703/547-2188

Lunch available at the sale.

Sale Headquarters: Culpeper Holiday Inn  
Rt. 29 South  
Culpeper, VA  
703/825-1253

**Guest Consignors Include . . .**

- Malvin Clark
- Charlie Taylor
- Lee Rosson - Quaker Hill Farm
- David & Pat Rosson - Limousin Lady
- Robert J. Runser - Fairmount Farm
- William Staples - Dunbeath Farm
- Mark & Clifford Mummau
- Lisa Riggleman - Skyview Acres

John Hart - Morhart Enterprises, Inc.

Sale Management By:

Water Dairy  
PO Box 58  
Pratts, Virginia 22731

Mark T. Mummau  
703/948-3423

**CANNON MARKETING COMPANY, INC.**

Carroll T & Patsie Cannon  
P.O. BOX 50  
TY TY, GEORGIA 31795-0050  
912/776-4383



**WHEATLEY FARMS PRODUCTION SALE**

Sunday, October 3, 1993

12:00 Noon, EST

At The Farm, Stanfordville, New York

**SELLING 55 ELITE LOTS**

- 20 cow/calf spring born pairs
- 25 bred heifers
- 4 outstanding fall yearling heifers
- 5 spring 1993 show heifer prospects
- 1 dark, solid red herd bull prospect

*Majority of offering will be dark red in color and a select set of black cattle.*

**SIRES REPRESENTED:** Highwayman, R&R The Wizard, Signal, Generation, Doubletime, Warbonnet, Red General, Cherithbrook, Mr. Abe and more!



**627**  
Sired by Doubletime  
Bred to Holley's By  
The Numbers



**683**  
Sired by Wizard  
Bred to R&R Private  
Stock



**678**  
Sired by Wizard  
(Polled)  
Bred to RR Apache



Sale managed by:  
Val and Lori Eberspacher  
RR1 Box 88  
Marshall, Minnesota 56258  
Phone: (507) 532-6894  
FAX: (507) 532-9457

**WHEATLEY FARMS**

Theo Budnik  
Owner

Tim Naylor  
Manager

RR1, Box 99, Layton Road  
Stanfordville, New York 12581  
914-868-7433