

**Public Auction Register**

Closing Date Monday 5:00 P.M.  
of each week's publication

SAT. SEPT. 25 - 9AM Antiques, household, tractors, farm items & tools. Location From I-81 exit 14 in Carlisle, travel rt. 34 S. 10 miles to sale. From Mt. Holly Springs, approx. 5 1/2 miles to 4263 Carlisle Rd., Gardners. Mrs. Nellie Walter, owner. Kevin M. Wichard, auct.

SAT. SEPT. 25 - 9AM Antiques, household goods & tools, glassware, tools Glenmoore, Pa next to Bryan's Pizzeria Deli. From Rt. 322 take Rt. 82 N. to St. Peters & Paul Church, turn right onto Fairview Rd., follow to Glenmoore crossroads. Turn right onto Creek Rd. approx 1 block, sale on left. By Ethel E. Evans, Kenneth Priest & John Stoltzfus, aucts.

SAT. SEPT. 25 - 9AM Toys, Furniture & Misc. Items. To the rear of 619 Water Street, Northumberland Co. Private collection from the late Claude K. Wilson. Dockey, Dockey-Romberger, Deppen, aucts.

SAT. SEPT. 25 - 9AM Estate of Bessie M. Snyder, Antiques, Collectibles. Located in the Mahantongo Valley, 8 miles S. of Shamokin, Pa. Rt. 125, along Line Mt. Rd., 5 miles NW of Pitman. Auction arrows posted. Ralph W. Wiest & Thelma Wiest, executors. Mark J. Jones, auct.

SAT. SEPT. 25 - 9AM & MON. SEPT. 27 - 3PM Two Day County Auction, valuable 4 1/2 acre farmette, antiques & dolls. Just off Fruitville Pike at 871 Holly Tree Road, Manheim, Pa. For Catherine K. Eitnier. E.M. Murry Assoc., aucts.

SAT. SEPT. 25 - 9AM, Two Adjoining Snyder County Farmettes For The Estate Of Arthur M. Beachy, Selinsgrove, Pa. Located From Harrisburg Travel North On 11 & 15 Exit Selinsgrove. Take Rt. 522 2 Miles To Salem Motors Turn Right Travel To T. Turn Left Proceed Thru Village Of Salem Over Hill First Farm On Left Other Property Is Left On Foxborough Road. Signs Posted Kenneth E. Hassinger & Neil A. Courtney, Aucts.

SAT. SEPT. 25 - 9AM, Household Goods, Antiques, Coins (Over 300) Collectibles & Tools. Located At 2465 New Holland Pike (Rt. 23) Across From Stauffers Of Kissel Hill, Lanc. Co., Pa. Terms By, William H. & Erla M. McCracken. Robert E. & Jeffrey R. Martin & Randall L. Ranck, Aucts

SAT. SEPT. 25 - 9AM, Carpenter & Construction Tools, Camper, Pick-Up Trucks, Riding Horse, Tack, Household Goods. Located West Side Of Adamstown In Lancaster County, Pa. Directions From Rt. 272 Turn North Onto Cocalico Road At Black Angus Restaurant Go 1/2 Mile To Farm. Terms By, Reuben & Mary Ann Newswanger. LeRoy S. Horst & Paul W. Horst, Aucts.

SAT. SEPT. 25 - 9AM Carpenter & Construction Tools, pickup trucks, HH goods, riding horse & tack. Loc.: West side of Adamstown, Lanc Pa. Dir: From Rt. 272 turn N. on Cocalico Rd. at Black Angus Rest. go 1/2 mi. to farm. Terms: Reuben & Mary Ann Newswanger. Leroy S. Horst & Paul W. Horst, aucts.

SAT. SEPT. 25 - 9AM 15 acre farmette w/2 homes, antiques, household goods, tools, lawn equipment. Located along St. Michael's Church Road, Tilden Twp., Berks Co., Pa. Traveling between Hamburg and Charlesville on Old Rt. 22 near Indian Fort

Inn, turn onto S. Michael's Church Road, go for 3 blocks, farm on left. For Paul A. Boyer & Marian L. Boyer. Dennis F. Wagner, auct.

**CONSIGNMENT SALE  
SAT., SEPT. 25, 1993  
10:00 A.M.**

**Farm & Lawn and Garden Equipment, Trucks, Tractors, Combines and Horse Drawn Equipment**

Location: Just North of Canterbury Light on US 13, 8 miles South of Dover, De. on U.S. 13.

Early Listings: Ford 8N Tractor (nice), 21 HP Satoh tractor w/3 pt., turf tires and 5ft/ Finishing Mower, 600 hours, Farmall 400 tractor w/NI loader, 1984 Chevy C65 w/12 ft. Dump Body (22,00 miles), 1969 Ford F600 w/12 ft. dump body (70,000 miles), 1967 Chevy 1 ton truck, 1974 IH flatbed truck 44 ft. Fruehauf Flat trailer 14 ft/. dual wheel flat trailer, 10 ft. Brillion pulltype chisel plow, 12 ft. Brillion cultumulcher 10 ft. AC Disc 14 ft. Brillion field cultivator, Ford 916B Belly Mower cyl., NI 206 ground driven manure spreader (exc.) 15 ft. MF 3 pt. field cultivator, JD 14 spount Model B Grain drill 10 ft. Utility body w/generator 8 1/2 3 ph. in disc, 2-14 Ford 3 pt. plow, NH 69 Haybaler 2-2 hole corn sheller (exc.) 2 wheelbarrow seeders, Surge vacuum pump, pick-up fuel tank (nearly new) Platform Scales, grindstone 326x6 Creasote Posts, JD 40 tractor w/212 JD plows, (more stuff arriving daily).

Consignments accepted Sat., Sept. 11 to Friday, Sept. 24 9 AM to 6 PM. Consign early for Advertisement.

Cash or approved certified checks day of sale if not known to auctioneer (Letter of credit from bank)

Not Responsible For Accidents  
Auctioneer Sam Walters III  
(302) 284-4619 Canterbury, De.  
Lunch Served -

**POWER TOOLS - GARDEN EQUIP. - ANTIQUES - HOUSEHOLD**

**AT PUBLIC AUCTION  
SAT., SEPT. 25, 1993  
At 9 A.M.**

From route 78/22 exit north from Allentown on Route 309 - through Orefield-turn right on Shankweiler Road (at Pharmacy), proceed to turnpike overpass-watch for signs- Coffeetown, Pa.

McDougal kit. cabinet, dome trunk, clothes tree, split oak & market baskets, 3 pc. parlor suite, CI & nickel parlor heater, kit. set/chairs, nice gas range, brass clothes tree, breakfast set, wooden benches, wringer washer, kero. & warm morning gas heaters, sew. mach., BLUE DEC. CROCK & others, sm. appliances, press glass, wrought handle waffle iron, 2 copper boilers, 2 mantel clocks, bugle, hanging scale, keg, box old fishing reels, copper funnel, jars, nickel tea kettle, var. traps, fish rods & tackle box/contents, eel gig, white bakelite radio, adv. boxes, mens bike, air rifle, CI pot & butcher kettle, NEWLY INSTALLED 275 GAL. OIL TANK & COMFORTMAKER HOT AIR OIL BURNER (to be removed), DeWalt 10" radial saw, Rockwell bandsaw, jig saw, 4" jointer, router table, 24 & 32" ext. ladders, Craftsman 6" planer, belt/disc sander, slater tools, air compressor, bench top drill press, miter box, shop lights, scythes, var. long handle-hand & garden tools, 2 man saws, reel & rotary mowers, lawn sweeper, gas mulcher, tin & slate roofing, battery charger, veg. seeder, BOLENS TRACTOR/MOWER CULT.-SNOW BLOWER, BRADLEY WALKING TRACTOR, NEW 5 H.P. ENG. & many unlisted items.

TERMS: Cash or Pa. Approved checks.

By order of  
**WILLARD HOFFMAN**  
Tim Wotring - Auctioneer - AU1563L  
Schnecksville, PA 215-799-4843

**PUBLIC AUCTION**

**VALUABLE  
REAL ESTATE  
76 ACRES M/L  
33 ACRES M/L**

**THURS., SEPT. 23, 1993  
6:30 P.M.**

Tracts Located In Northumberland County at R.D. #1 Dornsife, PA. Approximately 50 mi. North of Harrisburg. From the Mandata Junction of Routes 147 & 225 go North on Rt. 225 8 mi. to Pelfers Dr. Turn left then go 1/2 mi. on Pelfers to Property.

Property consists mostly of mountain land with about 15 acres in cultivation. Road Frontage on 3 Roads. Both tracts have springs. No Zoning. These properties have excellent investment potential.

Terms: 10% down day of sale - Balance 45 days. Tracts Sold Separately. To inspect property call - 717-367-1880.

Sale by  
**LOUIS &  
EVELYN ISZAK**

Attorney: Roger Wiest  
Auctioneers: 2897-L  
Harold "Abe" Shaffner  
717-653-5689  
Mark Diffenderfer  
717-367-1880

**Public Auction**

**33 ACRE FARM &  
FARM MACHINERY  
SATURDAY, OCTOBER 9, 1993  
9:00 A.M.**

LOCATED: South of Red Lion, PA on Rt. 24, lower end of Winterstown, turn east on Church Street (Reeds Used Cars), Go 7/10 mile turn left on Laurel Hill Road, go 7/10 mile to sale on right.

11:00 A.M. REAL ESTATE 11:00 A.M. 33 Acres improved with a frame 2 1/2 story house, block butcher shop, 2 story block building with equipment storage on ground level and chicken house above, 2 story block arid frame chicken house. This house has kitchen, living room, dining room, and 1/2 bath on the 1st floor, 3 bedrooms and full bath on the 2nd floor, farm has 3 building right lots, North Hopewell Township, Red Lion School District.

SHOWN BY APPOINTMENT  
PHONE 717-993-6271

TERMS: 10% DOWN, BALANCE IN 60 DAYS.

9:00 A.M. TRACTORS &  
FARM EQUIPMENT 9:00 A.M.

Ford 861 with power steering and sectional weights, Ford 600 tractor, Farmall 460G with fast hitch, Farmall Super M, Farmall H with Super Kit, Oliver 77 and Culti., International 3x16 Trailer plow - trip back, Int. 311 2 pt. 3X plow, 2 - 3 pt. 2 row Culti., Bush Hog 6' pull type mower, Int. 350 Transport disc, 10' & 8' Cultipackers, J.D. & Case spring harrows, 3 Oliver pull type disc, Walsh trailer sprayer with booms, J.D. 246 - 3 pt. corn planter, 2 Farquar 1 row potato planters, potato plow, 3 pt. fertilizer spreader, dump wagon, 3 pt. barrel sprayer, platform scales, garden culti., 3 Lawn Boy rotary mowers, 1/2 & 5/8 baskets, egg baskets, grease guns, strawberry boxes and carriers, 275 gal. fuel tank, sled, flower pots, Homelite chain saw w/14" bar, 20 chicken feeders, New & Used cement blocks. Oak wash stand with 2 drawers, Oak dresser with mirror, metal bed, wall mirror, counter top stand, table, 2 plate chunk stove, kerosene heater, charcoal grill, 40' extension ladder. NOT MANY SMALL ITEMS - PLEASE BE ON TIME!

TERMS: CASH OR GOOD CHECK  
SELLER:  
Melvin & Evelyn Lutz  
717-993-6271

AUCTION CONDUCTED BY:  
Rentzel's Auction Service  
Emigsville, PA  
717-764-6412  
PA Lic. #761

**Jeff Miller • Wayne Miller & Sons**

**CLUB CALF SALE**

**Saturday • November 6 • 7:00 P.M.**

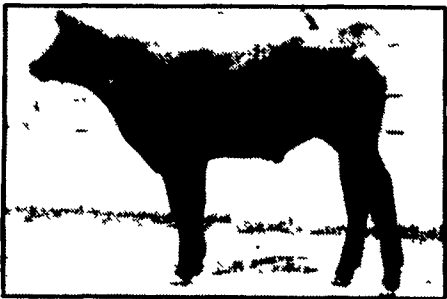
Selling 40 thick cross bred steers; Calves born March, April, May & June;  
Sires Represented: Zapper, Akeem, Sweet Willie, Pistol Pete, KK New Design



1992 PA Farm Show  
Grand Champion Steer



1993 PA Farm Show  
Grand Champion Steer



LOT 317  
Zapper/Maine



LOT 413  
Akeem/Chi x Angus

**These Future Champions Will Sell.**

The 1992 calving season at the Miller Farm was an exciting one. The number of exceptionally good calves was overwhelming. But we decided that wasn't enough. We wanted to improve the quality from top to bottom. After making several contacts and telephone calls, we headed west. After traveling several thousand miles and picking only the top calves from herds in Iowa, Illinois, Nebraska and Colorado, we came home with truly an exceptional group of calves. These calves will be all you ever expected in Western bred club calves. Along with our truly deep set of home bred calves, they will be worth your time to inspect. Over 20 Grand or Reserve Grand Steers were sold through this sale last year. These cattle will be wormed, vaccinated, pre-conditioned, and halter broke.

**SALE LOCATION**

**MARLEE FARM SALE PAVILION, DR. LEE MILLER, WOODSBORO, MD**

Food Available • Sale Day Phone: 301-898-7272

For Information Contact: Jeff Miller Wayne Miller  
Rt. 1, Box 326, Cutler, IN Rt. 1, Frankfort, IN  
Ph. 317-268-2409 Ph. 317-258-3492

Auctioneer: Harry Bachman