

Shepherd's Lead Line Shows Industry Best

HARRISBURG (Dauphin Co.) — Who looks better, the Sheep or the Shepherd? Judges will tell at the Keystone International Livestock Exposition Shepherd's Lead Line Competition to be held on Saturday, October 2, 1993 precisely at NOON at the Farm Show Complex. The objectives of this class are to present a class of yearling ewes in a most attractive manner and give spectators an opportunity to see the best of the sheep industry. The normal procedure at a Livestock Show is for the

We help point out the virtues of wool. It is a product that has been around forever and in recent years is making a well deserved comeback.

The Keystone International Livestock Exposition is sponsored by the Pennsylvania Livestock Association in cooperation with the Pennsylvania Department of Agriculture and the Pennsylvania Farm Products Show Commission.

Why not plan to enjoy yourself at the 1993 Keystone International Livestock Exposition.

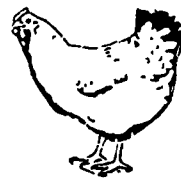
animal to be all primed and lovely, but in our Lead Line Competition the Leadsman is also in the limelight. Both are to be dressed fashionably in their best wool outfit. (At least 80% wool).

Not just another pretty face can steal our show. Our herdsman must not only look terrific, but our sheep must also show their modeling talents. The contestants and the sheep must be able to work together in the ring.

The Lead Line Competition has been around K.I.L.E. for years and each year it gets easier for our contestants to find their Wool Garments.



FARMER BOY AG INC.

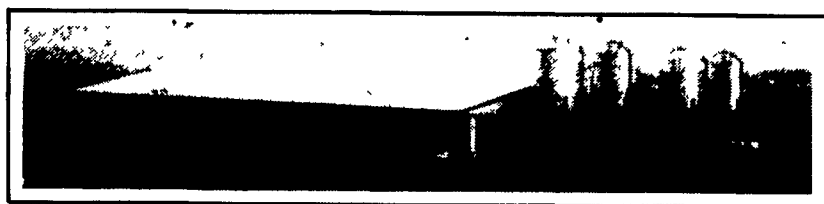


Your Complete Swine Building & Equipment Center

ADD INCOME TO YOUR FARM

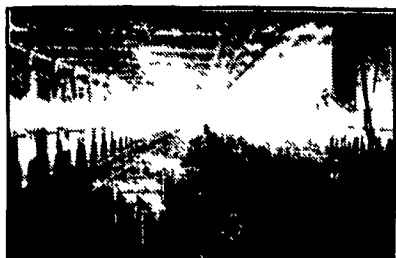
CONTACT FARMER BOY AG... Your Professional Company

- Custom Design
- Assistance In Financing



2200 HEAD FINISHER

- Assistance In Securing Building Permits
- Assistance In Nutrient Management Planning



BREEDING & GESTATION



FARROWING



NURSERY



FINISHING

★ PA'S OLDEST & MOST EXPERIENCED SWINE BUILDING & EQUIPMENT COMPANY

EARLY BIRD HEATER SPECIALS - COLD WEATHER IS JUST AROUND THE CORNER!

AGRICULTURAL HEATERS (45,000-75,000 Btuh) with Hot Surface Ignition

- Durability • Performance
- Safety • Quality

- "Master Control" Panel--All control components totally enclosed for protection from dust, dirt and moisture
- Totally Enclosed Case--Suitable for washdown
- Hinged Access Panels--Quick and easy access to all components for fast service
- Variable BTUH Output--Let's you adjust from 75,000 BTUH (maximum) down to 45,000 BTUH (minimum)
- Exclusive "System II" Hot Surface Ignition (HSI) Featuring:
 - "6-16 LED Analyzer"--6 distinctive light combinations pinpoint up to 16 possible operation interruptions
 - Self-Diagnostic Monitoring--Continuously monitors all primary functions
 - 15-Second "Chill Guard"--Shuts down fan for 15 seconds during start-up sequence preventing chilling animals
 - Auto Fan Shut-Down--If burner shuts down, system automatically stops fan preventing drafts

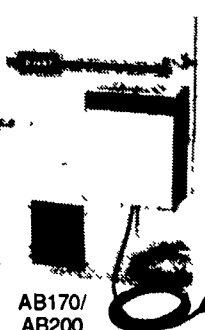


BOTTOM-DRAW 170,000 & 200,000 Btuh Hot-Surface Ignition AGRICULTURAL HEATERS with EXCLUSIVE "Master Control" Panel

- "Master Control" Panel--All control components totally enclosed for protection from dust, dirt and moisture
- Enclosed Case--Suitable for washdown
- Hinged Access Panels--Quick and easy access to all components
- Exclusive "System II" Hot-Surface Ignition (HSI) System Featuring:
 - "6-16 LED Analyzer"--6 distinctive light combinations pinpoint up to 16 possible operation interruptions
 - Self-Diagnostic Monitoring--Continuously monitors all primary functions
 - 15-Second "Chill Guard"--Shuts down fan for 15 seconds during start-up sequence preventing chilling animals
 - Auto Fan Shut-Down--If burner shuts down, system automatically stops fan preventing drafts
- Eyebolt and Chain Mounting System--Easy to install All hardware included with each heater

- Durability
- Performance
- Safety
- Quality

* Certified Under Agricultural Requirement 5-88.



AB170/ AB200

Demand quality, Demand the best... Demand L. B. White



Philips

Long Lasting 5,000 Hours

Save 30% On Your Electric Bill with our 175 Watt Heat Bulb 15 bulbs/case

These 175 watt heat lamp bulbs put out as much heat as a 250 watt bulb but use 30% less electricity at \$.10 per K.W.H. that's \$37.50 over the life of the lamp. Even better, if you run 40 lamps that's a savings of \$1,500.00. Bulbs are Heavy Duty Industrial type with high brass base and are resistant to urine and water splash damage, so you'll save even more on those costly breakage problems.

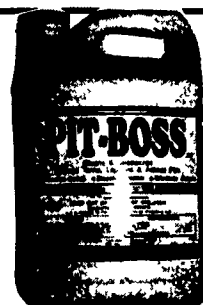
STANDARD 125-250 WATT BULBS AVAILABLE

CHECK OUR PRICES BEFORE YOU BUY!

The Nitrogen level of the pit waste will be enhanced by 300% with

PIT-BOSS™

Pit Additive To Reduce Pit Odor And Pit Solids



Full Line Of Parts In Stock For Your Poultry And Hog Needs



24 Hour Service

Swine & Poultry Systems Specialists
FARMER BOY AG. INC.
410 E LINCOLN AVE (RT 422) MYERSTOWN, PA 17067

PH. 717-866-7565

Hours: M-F 7:00-5:00; Sat. 7:30-11:30

Check Our Warehouse Prices

WE SHIP UPS



QUALITY CHORE-TIME BINS

We Assemble, Deliver & Set-Up Bins On Your Farm

