

SINCE 1936

M.M. WEAVER & SONS, INC.

MASSEY FERGUSON

Tractors And Combines

Leola, PA 17540 Phone: (717) 656-2321

Located: 4 miles West of New Holland on Rt. 23, 1 1/2 miles Northeast of Leola on the No. Groffdale Rd., 1 mile on the right, opposite Groffdale Mennonite Church.

Discover
CLAAS
THE HARVESTING SPECIALIST

LATE MODEL MF USED COMBINES

1984 MF 850, 4 Wheel Drive With 15 Ft. Floating Head.....	\$26,000
1982 MF 850 With 15 Ft. Floating Head.....	\$23,000
1982 MF 860 With 15 Ft. Floating Head.....	\$22,000
1981 MF 860 With 15 Ft. Floating Head.....	\$22,000
1980 MF 550 With 13 Ft. Floating Head.....	\$22,000
1980 MF 550 With 13 Ft. Floating Head.....	\$21,000
1979 MF 550 With 13 Ft. Floating Head.....	\$16,000
1979 MF 760 With 15 Ft. Floating Head.....	\$14,000
1978 MF 760 With 15 Ft. Floating Head.....	\$9,000
1978 MF 750 With 15 Ft. Floating Head.....	\$12,000
1978 MF 540 With 13 Ft. Floating Head.....	\$11,500

USED TRACTORS

MF 360-4, 140 HP, 814 Hrs.....	\$52,000
MF 3525-2, 110 HP, 2882 Hrs.....	\$18,500
MF 374-4 With Loader, 57 HP, 735 Hrs.....	\$21,000
MF 390 Tractor, 70 HP, 750 Hrs.....	\$16,000
MF 1085, 82 HP, 3568 Hrs.....	\$8,500
MF 1085, 82 HP, 3980 Hrs.....	\$7,500
MF 1080, 82 HP, 5516 Hrs.....	\$5,000
MF 1030-2, 26 HP, 232 Hrs.....	\$6,700
MF 1035-2, 31 HP, 185 Hrs.....	\$7,600
MF 1045-2, 35 HP, 262 Hrs.....	\$7,900
MF 40 With Loader, 3170 Hrs.....	\$4,700
MF 30E With Loader, 668 Hrs.....	\$19,500
IH 350 Tractor, 42 HP, Rebuilt.....	\$2,900
Ford 9N Tractor.....	\$1,500

HAY EQUIPMENT

New Idea 483 Round Baler, 1 Yr. Old.....	\$6,900
MF 128 Baler.....	\$2,200
Demo Vicon 1511E 5x6 Round Baler.....	\$9,900
Demo MF 5 Big Square Baler.....	\$36,000
Used Vicon 1211 E 4x5 Round Baler.....	\$6,500
Demo Vicon 321 Disc Mower Conditioner.....	\$12,500
Demo Vicon 216 7 Ft. Disc Mower.....	\$3,900
Vicon KM240 Discbine, Parts.....	\$900
NH 256 Rake.....	\$1,100
Pequea 910 9 Ft. Tedder, Like New.....	\$1,250
Lucknow Tub Grinder.....	\$5,900
Lely Rake.....	\$250
Teagle Bale Shredder.....	\$1,900
Vicon RS740 Tedder 24 Ft.....	\$4,500
Vicon KM281 Mower Conditioner.....	@ \$1,200
6 Like New 8x24 Ft. Flat Wagons.....	@ \$1,200
NH 851 Round Baler.....	\$4,250

PLOWS & TILLAGE

Haybuster 10' No-Till Drill.....	\$1,100
JD 10 Ft. Disc.....	\$800
Glenco 7 Tooth Soil Saver.....	\$5,900
M&W 5 Tooth V-Ripper.....	\$5,700
Vicon 18 Ft. Field Cultivator.....	\$6,900
MF 2-16 Spring Trip 3 Pt. Plow.....	\$650
Dunham 14 Ft. Cultipacker.....	\$1,875
Yetter 3 Pt. Rotary Hoe.....	\$2,695
Buffalo 6 Row Cultivator-Ridge-Till, Like New.....	\$7,900
Pequea 6 Row Cultivator.....	\$2,100

MANURE & FEED MIXER EQUIPMENT

IH 595 Tandem Spreaders.....	\$3,900
NH 795 Tandem Axle Spreader.....	\$4,500
NH 791 Tandem Axle Spreader.....	\$2,400
NI 244 Tandem Axle Spreader.....	\$1,900
NI 365 Tandem Spreader.....	\$4,500
NI 75 Bu. Ground Driven Manure Spreader.....	\$1,200

ROTARY CUTTERS & EQUIPMENT

Hinicker Brady 12 Ft. 1000 RPM Shredder.....	\$5,500
Woods 60 HP Rated 8 Ft. 3 Pt. Blade.....	\$650
Low Cost 7 Ft. 3 Pt. Blade.....	\$305
Brady 7 Ft. Flail Chopper.....	\$2,500
Danuser 3 Pt. Post Hole Digger.....	\$680
Shaver 3 Pt. Hydraulic Post Drive.....	\$2,500
Brady 12 Ft. Flail Shredder.....	\$5,500

NH 360 4RN Harvester Head, 2 Years Old

THE CLAAS HARVESTER



MAXIMUM FEED QUALITY

To ensure maximum feed quality from maize it is vital to crack every kernel. Digestion of uncracked maize falls as the maize becomes drier. Independent trials have shown the Claas corn cracker to be close to 100% effective. From the cylinder the corn passes through the two large diameter rollers with saw tooth profiles. The rollers run at different speeds to intensify the grinding effect and open up each kernel. It is a fairly tough process so the latest generation of corn crackers take account of the wear involved on the rollers. Nothing can reduce the wear but Claas have cut the cost of repair by making the outer sleeve replaceable. The shaft, drive pulley and bearings can all be reused which cuts down repair bills dramatically. Adjusting the distance between the two rollers is accomplished by turning two handles, easily accessible behind the cab. In no time at all the degree of cracking can be matched to the ripeness of the crop.

Call Today For The Custom Harvester
In Your Area Equipped With A
Claas Harvester And Roller Mill

RELIABILITY

The CLAAS Cutterbox is a unique balanced design using 2 knives in a V configuration. This forces the cutting action toward the center instead of the outside. This is the secret of their horsepower requirement and good quality of cut.



The VA 500 automatic feeder, simple and functional

Individual feeding for yield and quality

The VA 500 can be programmed to increase daily ration automatically up to a new maximum. The increase is very gradual with consequent beneficial effect on feed utilisation and health. As milk yield decreases towards the end of the lactation you can instruct the feeder to automatically and gradually decrease the daily ration to nil over whatever period you choose. Once a week or so amendments may be programmed into account for the current milking situation (new cows calved or dry etc.). All other instructions can be entered at any time to coincide with the receipt of figures from milk recordings and analysis. The VA 500 saves a lot of labour and time working out new rations.



Concentrates correction for all livestock

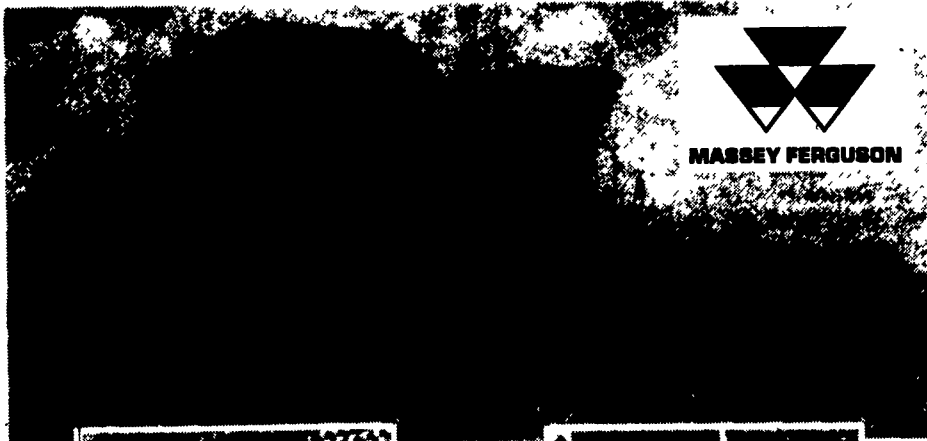


When there is a sudden change to bulk feed intake (for example because of bad weather or a switch to a different quality of silage) rations can be adjusted for the whole herd by making a single entry on the controlling keyboard. This has proved to be particularly easily accomplished and prevents fluctuations in production.



NEW IDEA 803C UNISYSTEM

234 HP Cummins,
1300 Hours, 868
Chopper Unit, 6240
4 RN Cornhead,
628 7 Ft. Grass
Head.

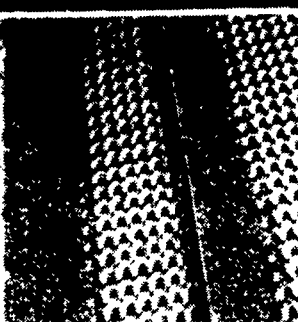


COMBINING SLOPES THE MF 3-D CLEANING SYSTEM

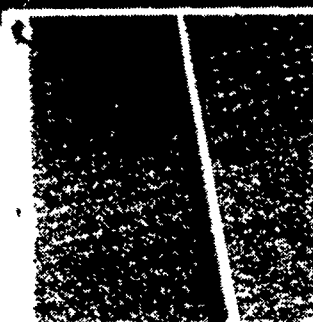
With the MF-3-D cleaning system, the crop is distributed evenly across the full width of the sieves, performance remains stable and output maintained.

The 3-D cleaning system provides dynamic slope compensation which means that the upper sieve moves sideways against the slope of the hill. The degree and direction of these movements depend on the inclination of the slope. Quick reaction and of course equal performance in any direction on slopes of up to 20%.

With the MF 3-D system you can operate at the same speed on slopes as on flat land. Daily performance can be maintained.



Normal cleaning across slopes



3-D in operation