

# W. Va. State Fair Draws 139 Angus Entries

ST. JOSEPH, Mo. — Joe Bales, Knoxville, Tennessee, served as the judge for the 139 Angus entries that were paraded at the 1993 West Virginia State Fair Angus Show. The event was held August 17 in Lewisburg, W. Va.

Taking home the grand champion bull honors was R & J Majestic 1121, an April 1991 son of R&J Maxima. This senior champion winner is jointly owned by Whitestone Farm, Aldie, Virginia, 21st Century Genetics, Shawano, Wisconsin; and Benson Angus Farms, Irwin, Iowa.

The reserve grand champion bull was Hale O Goliath. This October 1991 son of TC Stockman is owned by Hale O Farms Inc., Bland, Virginia. He was also the reserve senior champion bull.

In the heifer competition, Whitestone Blackbird 2164 was the winning entry. She is a September 1992 daughter of Ellanin Sky Diver. She was named the senior heifer calf champion before winning the grand honors. She is owned by Whitestone Farm, Aldie, Virginia.

Capturing the reserve grand champion female title was Sycamore Creek Ark Pride 502. This March 1992 junior champion winner is sired by Leachman Tonto. She is owned by Q B Land & Cattle Company, Caldwell, Ohio.

#### HEIFERS 99 Shown

Junior Heifer Calf Champion: Hale O Ruthella; Exhibitor: Hale O Farms Inc., Bland, VA.

Reserve Junior Heifer Calf Champion: Daltons Belle Dominique; Exhibitor: Judson Dalton, Altavista, VA.

Senior Heifer Calf Champion: Whitestone Blackbird 2164; Exhibitor: Whitestone Farm, Aldie, VA.

Reserve Senior Heifer Calf Champion: Ankony Belle Rose 98B1; Exhibitor: Ankony - INA Angus, Minatare, NE.

Intermediate Champion Heifer: C F Ideal Elba 343; Exhibitor: Jason Michael, Mt. Solon, VA.

Reserve Intermediate Champion Heifer: Ankony Blackbird 01B4; Exhibitor: Bryson Michael, Mt. Solon, VA.

Junior Champion Heifer: Sycamore Creek Ark Pride 502; Exhibitor: Q B Land &



Whitestone Blackbird 2164 was named the grand champion female at the 1993 West Virginia State Fair Angus Show in Lewisburg. Whitestone Farm, Aldie, Virginia, owns this September 1992 daughter of Ellanin Sky Diver. She was also the senior heifer calf champion winner. Breeders exhibited 139 entries in the show.



Justafew Bonnie Jaya 9 and her March 1993 bull calf were chosen as the grand champion cow-calf pair at the 1993 West Virginia State Fair Angus Show in Lewisburg. The cow is a January 1991 daughter of Leachman Tonto, and the calf is sired by S A F Power Fix. They are owned by Ann Ogle, Max Meadows, Virginia.

Cattle Company, Caldwell, OH.  
Reserve Junior Champion Heifer: J D H Vanessa 8472; Exhibitor: J D H Cattle Company, The Plains, VA.

Senior Champion Female: A F Maxima Blackbird 1155; Exhibitor: Morven Farms, Charlottesville, VA & E I O Farms, Harrogate, TN.

Reserve Senior Champion Female: Daltons Connie Lynn; Exhibitor: Wynn Dalton, Altavista, VA.

Grand Champion Female: Whitestone Blackbird 2164; Exhibitor: Whitestone Farm, Aldie, VA.

Reserve Grand Champion Female: Sycamore Creek Ark Pride 502; Exhibitor: Q B Land & Cattle Company, Caldwell, OH.

BULLS 35 Shown  
Junior Bull Calf Champion: Whitestone Pure Profit; Exhibitor: Whitestone Farm, Aldie, VA.

Reserve Junior Bull Calf Champion: Tilmans High Pockets 298; Exhibitor: Edward Tilman, Powhatan, VA.

Senior Bull Calf Champion: A C On Time; Exhibitor: Hale O Farms Inc., Bland, VA, & Douglas Dalton Jr., Sycamore, VA.

Reserve Senior Bull Calf Champion: Whitestone Skypower 2159; Exhibitor: Whitestone Farm, Aldie, VA.

Intermediate Champion Bull: Ottawa of Indian Creek; Exhibitor: Indiana Creek Farm, Stahlstown, PA.

Reserve Intermediate Champion Bull: Pontiac of Indian Creek; Exhibitor: Indian Creek Farm, Stahlstown, PA.

Junior Champion Bull: Whitestone Priority 244; Exhibitor: Whitestone Farm, Aldie, VA; Priority Associates, Aldie, VA; & Yacklin

River Angus Farm, Clemmons, NC.  
Reserve Junior Champion Bull: Tilmans Hammer; Exhibitor: Edward Tilman, Powhatan, VA.

Senior Champion Bull: R & J Majestic 1121; Exhibitor: Whitestone Farm, Aldie, VA; 21st Century Genetics, Shawano, WI; & Benson Angus Farms, Irwin, IA.

Reserve Senior Champion Bull: Hale O Goliath; Exhibitor: Hale O Farms Inc., Bland, VA.

Grand Champion Bull: R & J Majestic 1121; Exhibitor: Whitestone Farm, Aldie, VA; 21st Century Genetics, Shawano, WI; & Benson Angus Farms, Irwin, IA.

Reserve Grand Champion Bull: Hale O Goliath; Exhibitor: Hale O Farms Inc., Bland, VA.

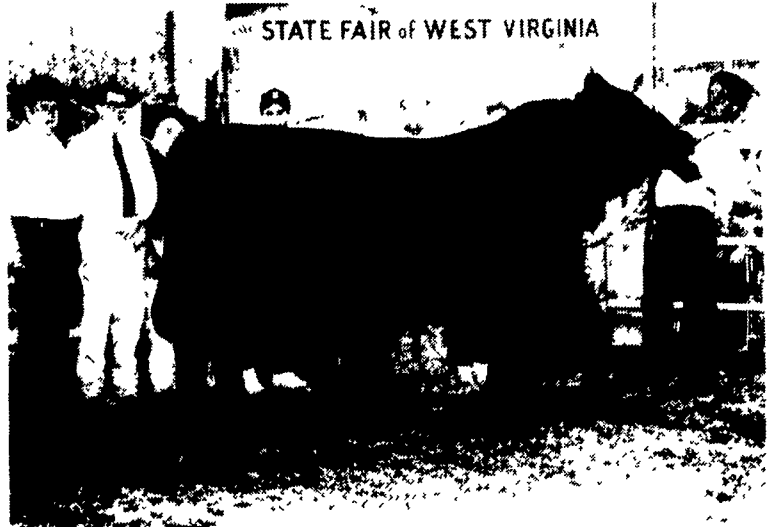
COW-CALFS 5 Shown  
Grand Champion Cow-Calf: Justafew Bonnie Jaya 9; Exhibitor: Ann Ogle, Max Meadows, VA.

Reserve Grand Champion Cow-Calf: Tops Queen Mother of P A F; Exhibitor: Mark Duffell, Aldie, VA.

GROUP CLASSES  
Get-Of-Sire: TC Stockman; Exhibitor: J D H Cattle Company, The Plains, VA; Hale O Farms Inc., Bland, VA; & Wynn Dalton, Altavista, VA.

Junior Get-Of-Sire: Minerts Fortune 2000; Exhibitor: Rocking P Farm, Horner, WV.

Best Six Head: Hill Crest Angus Farm Inc., Delaplane, VA.



R & J Majestic 1121 topped the bull entries at the 1993 West Virginia State Fair Angus Show in Lewisburg. This April 1991 son of R&J Maxima was previously named the senior champion winner. He is jointly owned by Whitestone Farm, Aldie, Virginia; 21st Century Genetics, Shawano, Wisconsin; and Benson Angus Farms, Irwin, Iowa. Breeders exhibited 139 entries in the competition.

## Deere Introduces Mower/Conditioner

MOLINE, Ill. — John Deere has introduced a new family of mower/conditioners (MoCos) that replace the 1219 sicklebar and the 1360, 1460, and 1470 rotary models.

The new 800 and 900 Series MoCos provide improved flotation from a new 3-point suspension system, simple adjustments, and easy serviceability. The rotary MoCos feature a new John Deere designed-and-built modular cutterbar that provides durable, reliable performance and serviceability advantages.

The model 820 sicklebar MoCo has a 9-foot 9-inch cutting width, the widest in its class, and 6 inches wider than the model 1219 it replaces. The 920 rotary MoCo also has a 9-foot 9-inch cut. The larger 930 rotary MoCo features a cutting width of 11 feet 6 inches. The rotary models are available with either impeller or urethane-roll conditioning. The 820 features urethane-roll conditioning.

The new 3-point suspension system optimizes platform flotation for smooth cutting performance. Float adjustments are made with a built-in handcrank on each end of the carrier frame. A simple turnbuckle (or optional ratchet) located on the third suspension point makes adjusting cutterbar angle a one-step process. In addition to float and cutterbar angle, roll pressure and windrow width can also be adjusted without tools.

An angled-tongue design en-

hances the maneuverability of the MoCos and eliminates the need for an equal-angle hitch. A "Power-Cushion" spring capsule in the front section of the tongue protects the telescoping hookup and the tractor PTO. The spring in the power cushion compresses if the tractor hookup "bottoms out," for example, during a turn while climbing a steep incline. Tongue and lift-cylinder locks are provided for transport, servicing, and storage.

The new slip clutch in the main drive sheave, located at the primary gearcase, has new metallic linings for increased reliability and durable performance. The linings are moisture-resistant to minimize the potential for seizing, a condition often associated with organic linings.

The model 820 features a 5-bar reel that provides increased visibility to crop flow through the platform. The computer-designed, cast-iron reel cam enhances smooth reel operation for improved crop delivery. Reel cam adjustments for matching crop release to crop conditions are easy to make by repositioning one bolt. For easy access to the cutterbar, one of the five reel bars has a quick-release feature that permits it to be pivoted out of the way when servicing or inspecting cutterbar components.

New double-hardened, two-tine, narrow-profile guards provide improved crop penetration and expose more of the knife sec-

tion to the crop for clean cutting in difficult conditions. Non-clog guards are also available. The enclosed knife drive operates in oil to minimize wear and eliminates the need for additional lubrication or adjustments. Knife speed is 1,650 strokes per minute for smooth cutting.

The 820's low-profile transition deck helps crop flow smoothly from the cutterbar to the urethane conditioning rolls. The rolls are gear driven to ensure proper roll timing, smooth operation, and reliable performance.

The exclusive urethane conditioning rolls have intermittent recessed cleats that provide more crimping edges than typical chevron-style rolls for fast, uniform crop dry-down. The molded urethane rolls are formed at low temperatures so the steel cores of the rolls remain "arrow" straight. The result is straight rolls that can be accurately adjusted for consistent clearance, which promotes uniform dry-down.

The 920 and 930 rotary MoCos feature a new modular cutterbar that is designed and built by John Deere. The cast-iron modules provide durability and strength. Should repair work ever be needed, the modules can be serviced or replaced individually.

The modules are bolted to a reinforcement member across the rear of the cutterbar for added strength. Steel plates located on the top and bottom of the cutterbar provide protection.



The John Deere 820 Sicklebar Mower/Conditioner features a 9-foot 9-inch cut for increased productivity and a 3-point suspension system that optimizes platform flotation and simplifies guard angle adjustments. The standard 5-bar reel and low-profile transition deck help provide a smooth material flow to the exclusive urethane conditioning rolls.

The large-capacity oil reservoir gives the cutterbar improved cooling and tolerance to varying oil levels. A convenient sight glass at each end of the cutterbar makes checking the oil level easy. A rubber seal between the modules helps maintain the integrity of the system.

The module transmits power to the cutting disk through a splined driver hub. If the cutting disk receives a severe impact, the splines inside the hub will shear, inter-

rupting power to the disk to help protect the internal components of the cutterbar.

The 920's cutterbar uses six cutting disks. The 930's cutterbar uses seven disks. Each disk has two reversible, interchangeable knives and produces a knife tip speed of 191 mph at 2,650 rpm.

An access hole in the front of each half-moon-shaped disk protector provides an easy way to reverse or change the knives from

(Turn to Page D8)