

# Llama Association Sets Conference

LANCASTER (Lancaster Co.) — The Greater Appalachian Llama Association will be holding their annual conference at the Eden Resort and Conference Center on September 24-26.

This will be the first time that Pennsylvania will host the annual convention.

Llama owners from around Pennsylvania and the East Coast will gather in Lancaster to share ideas, attend workshops, and meet new llama owners. The theme for the 1993 conference is the "Small

Llama Producer," concentrating on those producers and their special needs.

A variety of speakers and workshop leaders from Pennsylvania will be participating, such as Drs. Stanley Curtis and Clair Engle, Pennsylvania University; Drs. Laura Reiley and Wendy Freeman, New Bolton Center; Dr. Gerald Marvin, Jr., Philadelphia College of Textiles and Sciences; Paul Craig, Dauphin County extension agent; and Dr. Ed. Scheaffer, Palmyra.

Special guest speaker at the

Saturday, September 25 luncheon will be Deputy Secretary of the Department of Agriculture Walter Puchatka. The secretary will talk about the direction of agribusiness and livestock production in the 1990s.

There will be about 100 llamas and alpacas on display during the conference, with a variety of vendors with llama materials and gifts. The public is invited to visit the llama displays and meet the llama owners during the conference.

Chairing the 1993 Llama Con-

ference is Elizabethtown businessman John E. Zerphey. John and his wife, Lynn, have been raising llamas since 1989. Other Lancaster County llama owners participating in the confer-

ence are Flo & David Harnish, Ephrata; Marj & Roger Gerhart, Lititz; and Lucy Gillichbauer, Willow Street.

For more information: contact John E. Zerphey, (717) 362-4315.



Committee for the 1993 Greater Appalachian Llama Conference hitch a llama to an Amish buggy after a conference meeting planning the annual conference.

## Slit Tiller Available

LANCASTER (Lancaster Co.) — Slit tillers are available again this fall from the Lancaster Conservation District.

A two-shank slit-tiller, which can be horse-drawn, and a five-shank model (80+HP recommended) are available free of charge on up to five acres. Both slit-tillers can be used for additional acreage

by paying a maintenance charge of \$2.50 per acre.

The slit-tillers are similar to chisel plows. However, the shanks with straight chisel points are 30 inches on center, so that less of the soil is disturbed. The combination of soils and undisturbed soil can act as small terraces, which will help to keep more soil, water, and

nutrients on the field where they can be utilized by your crops.

To maximize the benefits of slit-tillage, all work should be done on the contour and at least 30 percent of the crop residue should be left on the soil surface.

For more information about slit-tillage, or to use a slit-tiller on a free trial basis, contact Eric J. Ashley at the Lancaster Conservation District office at (717) 299-5361.



Stop and See our full line of  
**Wood, Coal & Gas Stoves**  
at

**DUSSINGER'S  
QUALITY STOVES**

Exceptional prices now thru Sept. 18

2533 Old Phila. Pike, Rt. 340, Smoketown, PA  
3 miles east of Lancaster

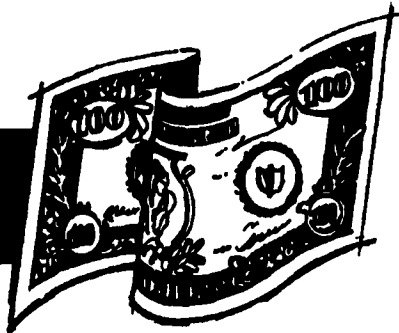
Tue, Thurs, & Fri 10-8; Wed. & Sat 10-5

(717) 397-7539

Mr. Dairyman,  
Want To Make Some

# BIG BUCKS

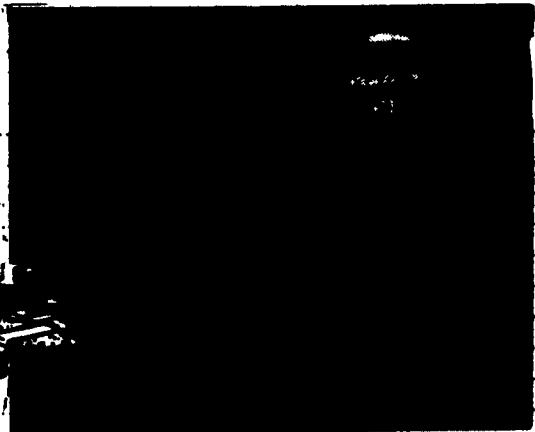
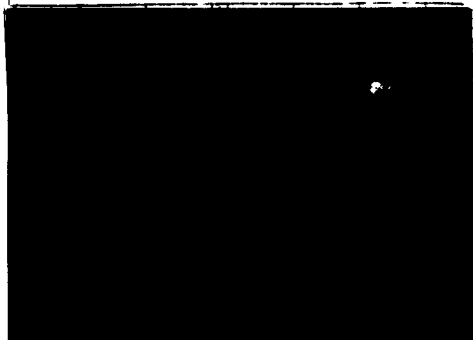
The Legal Way?



CHECK OUT THESE TWO MONEY-MAKING MACHINES

TAKE YOUR CHOICE — THEY'RE BOTH LEGAL... "RISSLER"  
And They Come In Sizes To Fit Your Operation.

— TMR MIXERS —



- ◆ Open top for easy filling of silage bags
- ◆ No need to run mixer while filling
- ◆ 10 sizes to fit all operations, or we customize to fit your needs.

### STANDARD FEATURES

- Beam Scale w/signal light, motors included in price
- Fast 2-5 minute mix time
- Stainless Steel Floor • Discharge Chute w/Magnet
- Lower Energy Consumption
- Heavy Stainless Steel Auger Trough

### OPTIONS AVAILABLE

- Wall-mount Beam Scales w/cable & pulleys
- Beam Scales mounted on all sides
- Electronic Scales w/ or w/o memory

All Totally  
Re-designed

Available as a rider or walk behind with optional electric start and electronic scales.

- Joystick control and zero turn radius, power steering from platform

- Fast variable speed mixing and unloading

- Driven w/hydraulic wheel motors.



**Cedar Crest Equipment**  
Two Convenient Locations

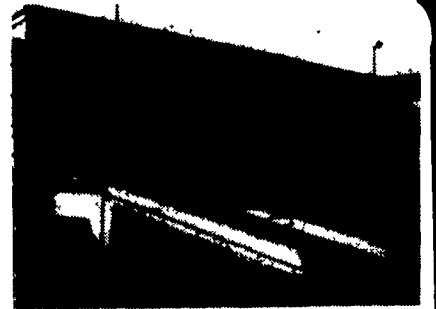
608 Evergreen Rd.  
Lebanon, PA 17042  
(717) 270-6600  
800-646-6601

RD 2 Box 271  
East Earl, PA 17519  
(717) 354-0584

WE CUSTOM  
DESIGN  
SYSTEMS  
FOR YOU

**REDI-DOCK**

★ **NEW** Lease Program Available



Redi-Dock System economically expands and diversifies loading and access capabilities

- Cost less than conventional construction
- Modular configuration maximizes versatility
- Allows expansion of warehouse space
- Installed without alterations to existing structure
- Quick and easy placement and relocation
- Offers tenants more flexibility
- No permits required

(800) 724-4881 (Reading Precast) ... (215) 926-5000

## MAHONING OUTDOOR FURNACES

"The Natural Way To Heat Your Home"



Burns  
Coal,  
Wood,  
Oil or  
Natural  
Gas

Efficiency Rating 83% to 85% - Cut Emissions by 90%  
3 Year Warranty Except Electrical Components (1 Year) — 35 Years Heating Experience  
**PROUDLY BUILT IN INDIANA COUNTY, PENNSYLVANIA**

FUEL USED IN  
STANDARD UNIT:  
WOOD & COAL &  
WOOD BY-PRODUCTS  
(SAWDUST, PAPER, ETC.)  
FUEL USED IN  
MULTI-FUEL MODEL:  
SAME AS ABOVE  
INCLUDING OIL, PROPANE,  
NATURAL GAS

### FOUR SIZES:

Model 100S both supply up to 100,000 BTU's per hour  
100MP 24 inch long fire heat  
Model 200S both supply up to 200,000 BTU's per hour  
200MP 30 inch long fire heat  
Model 300S both supply up to 300,000 BTU's per hour  
300MP 48 inch long fire heat  
Model 400S both supply up to 400,000 BTU's per hour  
400MP 60 inch long fire heat  
Scales and specifications subject to change without notice.

★ The only outdoor furnace made with a Catalytic Combuster. ★

Mahoning Catalytic Combuster Will Help In The Following Ways:

1. Burn one cord of wood which equals 166 gallons of oil
2. Your fuel source becomes enormous in-sha-she-able and poses few risks to public safety.
3. Over an efficiency of 85%, which means the heat no longer goes up the chimney!
4. You get more heat from a log compared to the non-cat. furnace.
5. More burn time - less reloading time!
6. Zap 80% of pollutants, made from fire source.
7. Saves you a lot of money!
8. User friendly, emits no smog!

**CLYDE K. ALDERFER**

Sales and Service

Box 246, Rt. #1, Mt. Pleasant Mills, PA 17853

FOR MORE INFORMATION CALL (717) 539-8456