

Central U.S. Carlot

Beef Report
 September 8, 1993
 Report supplied by USDA
CENTRAL U.S. CARLOT BEEF REPORT (INCLUDES THE MAJOR PRODUCTION AREAS IN THE MIDWEST AND TEXAS) AS OF 3:00 P.M. COMPARED TO TUESDAY'S 3 P.M. REPORT: UTILITY CARCASSES STEADY; CUTTER NOT ESTABLISHED. DEMAND AND OFFERINGS LIGHT TO MODERATE.
COW AND BULL CARCASSES
 FOB OMAHA BASIS
 7 LOADS REPORTED
 UT, BRK 2-4, 450 & UP, 3 LOADS, RANGE 81.00-81.50, LATEST ESTB. MKT. 81.00.
 UT, BNG 1-3, 400 & UP, 4 LOADS, RANGE 85.00-85.50, LATEST ESTB. MKT. 85.00.
 CUTTER 1-2 350 & UP, LATEST ESTB. MKT. 94.00-95.50 C.
 BULLS 500 LBS. AND UP, YG1, LATEST ESTB. MKT. 104.00 A.
BONELESS PROCESSING BEEF/ BEEF TRIMMINGS
 154 LOADS REPORTED
 FRESH 90% BONELESS BEEF MOSTLY 1.00-2.00 HIGHER; 85% STEADY TO 1.00 HIGHER; 75% 1.50 HIGHER; 65% STEADY TO FIRM. DEMAND MODERATE FOR LIGHT TO MODERATE OFFERINGS. BEEF TRIMMINGS STEADY TO WEAK ON LIGHT TO MODERATE DEMAND AND OFFERINGS
 90% FR, 28 LOADS, RANGE 128.0-130.0, WT. AVG. 129.54.
 90% FZ, RANGE 134.0, WT. AVG. 134.00 C.
 85% FR, 3 LOADS, 119.5-121.0, WT. AVG. 120.00.
 85% FZ, UNQUOTED.
 75% FR, 2 LOADS, RANGE 98.0, WT. AVG. 98.00.
 75% FZ, 1 LOAD, RANGE 101.00, WT. AVG. 101.00.
 65% FR, 7 LOADS, RANGE 78.00-79.00, WT. AVG. 78.79.
 65% FZ, UNQ.

50% FR, 63 LOADS, RANGE 46.50-48.00, WT. AVG. 47.25.
 50% FZ, 4 LOADS, RANGE 51.00-51.50, WT. AVG. 51.13.
 50% BX, UNQUOTED.
 BULL 92-94, RANGE 142.00, WT. AVG. 142.00 A.
 FOB EAST TX AND OK
 90% FR, 33 LOADS, RANGE 129.0-130.5, WT. AVG. 130.00.
 90% FZ, 3 LOADS, RANGE 134.0, WT. AVG. 134.00.
 85% FR, UNQUOTED.
 85% FZ, UNQUOTED.
 75% FR, 2 LOADS, RANGE 98.50, WT. AVG. 98.50.
 75% FZ, UNQUOTED.
 65% FR, UNQUOTED.
 65% FZ, UNQUOTED.
 BULL 92-94 UNQUOTED.
 CAF NORTHEAST AREAS
 90% FR, 8 LOADS, RANGE 131.0, WT. AVG. 131.00.
 90% FZ, UNQUOTED.
 85% FR, UNQUOTED.
 85% FZ, 75% FR, 75% FZ, 65% FR AND 65% FZ, UNQUOTED.
 ABCDE AFTER QUOTES REPRESENTS DAYS SINCE LAST ACTUAL MARKET TEST. QUOTES ARE DROPPED AFTER 5 DAYS OF NO TEST OR BEFORE IF THEY NO LONGER REFLECT CURRENT MARKET CONDITIONS.

Front Royal, Virginia Horse Sale

Report Supplied by Auction
 September 4, 1993
 152 HEAD.
 RIDING HORSES, SERVICEABLE AGE: AVERAGE TO GOOD QUALITY 925-1175 LBS. 550.00-740.00; BETTER QUALITY 950-1200 LBS. 750.00-935.00, 800-900 LBS. 540.00-675.00; EXCELLENT QUALITY 800-900 LBS. 1 AT 910.00.
 RIDING PONIES: LARGE 290.00-475.00.
 LOOSE HORSES: AVERAGE TO GOOD FLESH 925-1175 LBS. 505.00-800.00; 800-900 LBS. 395.00-490.00; 1200-1400 LBS. 700.00-1005.00.

Kutztown Produce Auction

Fleetwood, PA
 Open every day except Sun., 9:30 a.m. - August 30-September 4
 Report Supplied by Auction
 APPLES: EARLY GOLD 3.50-4.00 ¼ BU.; MACINTOSH 3.50-5.50 ¼ BU.; ROYAL GALA 4.50-11.50 ¼ BU.
 BEANS: GREEN 5.50-12.00 BU.; YELLOW 5.50-8.00 ¼ BU.; LIMA 5.50-12.00 ¼ BU.
 CANTALOPES: SMALL .65-.90, MEDIUM .85-1.05, LARGE 1.20-1.95.
 CORN: 3.00-12.00 BAG.
 CABBAGE: 5.50-7.00 BOX OR .42-.75 HEAD.
 BROCCOLI: 5.50-9.00 BOX.
 CUCUMBERS: 7.50-11.00 BU.
 EGGPLANT: 8.50 BU.
 PEPPERS: GREEN 6.75-8.50 BU.; YELLOW 6.50 ¼ BU.; RED 5.50-8.50 ¼ BU.
 NECTARINES: 3.00-9.00 ¼ BU.
 TOMATOES: 3.00-19.00 25 LB. BOX, MOSTLY 15.00.
 POTATOES: RED 8.50 50 LBS., WHITE 6.00-7.00 50 LBS.
 PEACHES: 3050-8.50 ¼ BU., MOSTLY 5.50.
 RASPBERRIES: RED 11.00-15.00 12 ¼ PINT.
 PEARS: BARTLETT 1.50-6.50 ¼ BU.
 PLUMS: 8.50-12.50 ¼ BU.
 PUMPKINS: LARGE HOWDEN 1.40-2.60 EACH; NECK .60-1.40.
 SQUASH: RED AND BLUE HUBBARD 1.25-1.65 EACH; YELLOW 3.50 ¼ BU.
 STRAWBERRIES (LOCAL): 16.50 8-QT FLAT.
 WATERMELON: .60-2.20 EACH.
 ZUCCHINI: 1.50-7.50 ¼ BU.
 MUMS: JUMBO 2.25-2.50 EACH; MEDIUM SIZED 1.10-1.70.
 PEPPERS: 4.50-5.50 ¼ BU., 6.50-9.00 BU.
 PUMPKINS: BABY PAMS .20-.90 EACH.
 GOURDS: 4.50-8.50 ¼ BU., JACK BE LITTLE 5.50-12.00 ¼ BU.
 RED BEETS: CUT 5.50-9.00 ¼ BU.
 VARIOUS FALL SHRUBS NOW AT MARKET, MOSTLY ON TUES. AND THURS. ARBORVITAE: 4.50-8.00

EACH, MANY MORE TOO NUMEROUS TO MENTION. ANNUAL FALL CRAFT AUCTION SEPT. 21, 2 P.M. AUCTION OPEN EVERY DAY 9:30 A.M. CLOSED SUNDAYS.

Buffalo Valley Produce

Mifflinburg R3
 Sept. 7 and 9, 1993
 Report Supplied by Auction
 APPLES: GALA 14.00; RAMBOS 7.00; MACINTOSH 12.00.
 BEANS (GREEN): 14.00 BU.
 BEANS (LIMA) 16.00 BU.
 BEATS (BUNCH): 40.
 BLACKBERRIES: 1.35 PT.
 CANTALOPES: EXTRA LARGE 1.75; LARGE 1.35; MEDIUM 90.
 CORN (SWEET): 1.50.
 CORN (MINI): .65-.85.
 CUCUMBERS: 3.00 BU.
 EGGPLANT: 3.50 1 1/9 BU.
 GOOSEGOURDS: 2.25 EACH.
 GOURDS: 4.75 ¼ BU.
 JACK-B-LITTLES: 4.50 ¼ BU.
 NECTARINES: 7.50 ¼ BU.
 PEACHES: 8.00 ¼ BU.
 PEPPERS: LARGE 6.50; MEDIUM 4.00 1 1/9 BU; RED 9.00 BU; SUNTAN 3.00; HOT 2.00 ¼ BU.
 PICKLERS: 5.50 ¼ BU.
 PLUMS: 6.00 ¼ BU.
 POTATOES: B RED 5.00; #1 RED 7.00 50 LB.; WHITE 6.50 50 LB.
 PUMPKINS: LARGE 2.50.
 RASPBERRIES (RED): 1.65 PT.
 SQUASH (YELLOW): 2.00.
 SQUASH (SWEET DUMPLING): 4.50 ¼ BU; BUTTERNUT 5.50 1 1/9 BU; ACORN 6.00.
 TOMATOES: #1 LARGE 15.00 25 LBS.; CHERRY: 5.50 12-PT. FLAT.
 WATERMELONS: CRIMSON: 2.00; SANGRIAS: 2.35.
 ZUCCHINI: 3.00 ¼ BU.
 NEXT WEEK'S AUCTION TUES., THURS, 10 A.M.

Pennsylvania Livestock Auction

Waynesburg, Pa.
 Thurs., September 9, 1993
 Report Supplied by Auction
 CATTLE: SL. COWS: UTILITY &

COMMERCIAL 49.00-54.50; CUTTER & BONING UTILITY 45.00-52.50; CANNER & LOW CUTTER 41.00-48.00; SHELLS 41.00 & DOWN. BULLS: YIELD GRADE 1 1500#-1870# 58.00-69.00; YIELD GRADE 2 1000#-1400# 52.00-62.50.
 FEEDER STEERS: M&L-1 300-500# 77.00-108.00; 250-280# 85.00-117.00, M 900-1000 60.00-72.00. HEIFERS M 1&L-1 300-500# 70.00-94.00; L-1 400-650# 65.00-84.00. BULLS M&L-1 300-620# 58.00-100.00.
 CALVES: VEAL.. PRIME 95.00-108.00; CHOICE 74.00-110.00; GOOD 60.00-72.00.
 FARM CALVES: #1 HOLSTEIN BULLS 90-120# FEW 100.00-140.00; #2 HOLSTEIN BULLS 80-100# FEW 75.00-100.00; BEEF X BULL&HFRS./HD. 45.00-140.00.
 HOGS: BARROWS & GILTS #1-2 210-255# 47.00-48.00; #2-3 255-280# 41.50-46.50; SOWS #1-3 300-500# 30.00-34.50.
 FEEDER PIGS: 1-3 25-35# 15.00-30.00/HD.
 LAMBS: HIGH CHOICE 55-75 LBS. 52.00-69.50; CHOICE 90-105# 52.00-55.50. FEEDER LAMBS GOOD 52.00-69.50; EWES 20.00-32.00.
 GOATS: LARGE 45.00-75.00/HD.; MEDIUM 25.00-43.00/HD.; SMALL 10.00-19.00/HD.
 HORSES: 50.00-62.00, PONIES 20.00-50.00.

Kutztown Produce Auction

Fleetwood, Pa.
 Hay and Straw Auction
 Sat., Sept. 4, 1993
 Report Supplied by Auction
 6 LOADS.
 STRAW: 74.00-83.00.
 ALFALFA HAY: 61.00-121.00.
 TIMOTHY MIXED HAY: 86.00.
 EAR CORN: 78.00.

MILK. IT DOES A BODY GOOD.



TRI-COUNTY
 CONFINEMENT SYSTEMS, INC.

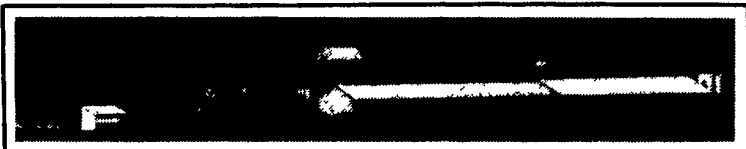
THE LEADER IN

\$ VALUE \$

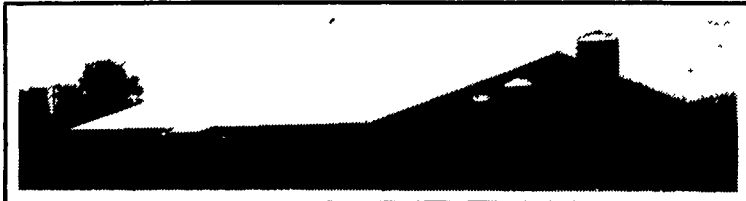
For Your Dollars

ONE OF THESE COULD BE YOUR ANSWER FOR MORE FARM INCOME

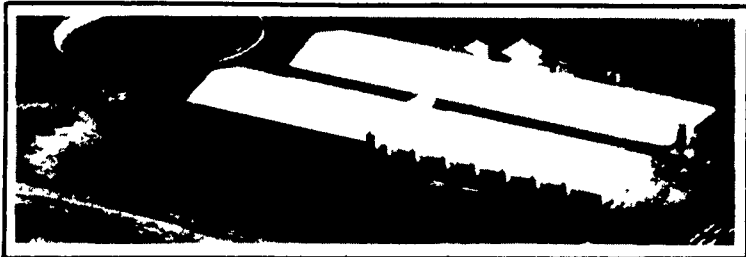
250 Sow Feeder Pig Unit



300 Sow Feeder Pig Unit



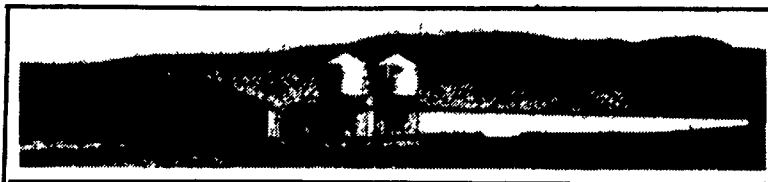
1200 Sow Feeder Pig Unit



2000 Head 2 Room Finisher



3000 Head 2 Room Finisher



2160 Head 5 Room Finisher



OUR EXPERIENCED STAFF WOULD BE HAPPY TO ASSIST YOU IN SELECTING A FACILITY TO MEET YOUR NEEDS.

AVAILABLE CONTRACTS FOR:

• SOWS - 300 Head to 1200 Head Units

• FINISHING - 1000 Head to 3000 Head Units

TRI-COUNTY
 CONFINEMENT SYSTEMS, INC.

608 E. Evergreen Rd. Lebanon, PA 17042 717-274-3488

Hours
 Mon-Fri 7:00 to 4:30
 Sat 8:00 to 12:00

WE SHIP DAILY

