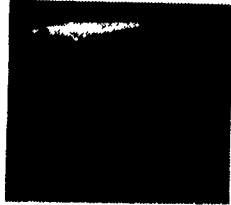


QUALITY DOG KENNELS



AND ACCESSORIES

- Galvanized Tubing
 - Galvanized Wire
 - 33" Opening
 - Free Standing
 - Optional Plastic Floor
 - Insulated Dog Boxes
 - Kennel Awnings
- (717) 355-0360**
Quality Fencing & Supply
 147A Amishtown Rd.
 New Holland, PA

27 PETS

New Zealand White Rabbits for Pets, Breeding Stock or Meat. Records Kept on All Stock. Call (717)274-3902 After 3PM.

Norwegian Elkhound pups, AKC, nice, friendly, shots, wormed, parents on premises. 717-354-9196.

28 LOST

Black male setter, Raider, lost near Liverpool, PA, on 8/24/93, \$100 reward. 717-444-7856.

31 NOTICE

Fellow farmers are you currently experiencing financial difficulties or have you had difficulties in the past? For helpful information phone 717-653-0214.

RECREATION- For the best big game hunting in North Central PA. (717)324-2841.

PAYING TOP DOLLAR FOR ORIGINAL WIDE ATTIC FLOORS. WE REMOVE. 717/229-2806.

SAVE MONEY ON WOODWORKING MACHINES!

Band saws, jointers, planers, routers, scroll saws, drill presses, table saws, sanders, lathes, shapers, dust collectors & more in stock. 30 Day Free Trial! 1 Year Warranty. Call For Low Prices. 1-800-445-4669. Terre Hill, Pa.

WANTED: Used tools and machinery. Buy, Sell, Trade, Consign or Finder. B.J. TOOL & SUPPLY, RT 422W, Myerstown, PA. 1-800-772-9845.

Woodworking Shop equipment: Planer, routers, saws, large assortment bits blades and hand tools. 3000 board feet kiln dried hardwoods. \$7000 takes all. 717/386-2872.

Farm Toys-Collector Series, Show Tractors, Pedal Tractors, Trucks-for sale at all times. Visit our large display during business hours. Wengers Farm Machinery, Inc., 251 S. Race St., Myerstown, PA 717/866-2130.

FOR SALE: 1966 mobile home, 12x60. Must Sell!! \$3500. Sold as is. Call after 5PM. 717-754-7512.

FOR SALE: Pin router and 2 sided Festo molder. 717-687-9567.

Good condition, Warm Morning coal stove for sale. Melvin B. Stoltzfus, 273 Highland RD., Christiana, PA 17509.

Hot air furnace, combo wood/coal, blower system, thermostat control, 2200 sq. ft. capacity, used weekends, excellent condition, Harmon model SF1500. Call 717-336-3937.

PAINTED STEEL ROOFING & SIDING

- Galvanized/Galvalume
- 29/26 Gauge
- 3 Major Brands Available
- Large Stock Trim & Sheet
- 5V Crimp Metal

AS LOW AS \$32⁰⁰ per/sq.

Conestoga Building Supply
 New Holland, PA 17557
 717-354-2613 or 1-800-544-9464

35 TRUCKS & TRAILERS

1979 R Model Tandem Axle Mack Tractor, 300 Engine, 60 Transmission, 11R24.5 Rubber w/ Wetline. \$7500. (215)383-7042.

1981 International S model, 1854 series, 30000 GVW, 22' flatbed, 3208 CAT engine, 5 speed trans, very clean, \$6000. 717-868-6237.

1983 Ford F150, 4x4 P/U, 302, 4sp, good condition, new tires, orig. owner, \$2750 OBO. Morris Co., NJ. 201-694-0834.

1985 Chevy Dual Wheel Bed & bed liner, excellent condition, \$400. 215/256-8045.

1985 Int. S2300 tractor, single axle, L10 Cummins, 9-speed, fresh inspection, new brakes, good rubber, truck is in very excellent condition. 717/374-9131.

1986 Iveco diesel, 5-speed, 18' flatbed, beaver tail w/ramp, \$4900. 717/922-3340.

1987 Chev. 4Dr Crew Cab, 1Ton Single Wheels, Excellent Condition w/or without High View, ARROW Board. \$6500. (908)689-3098.

1988 Peterbilt 379 Long-hood tractor, 425 Cat. 48" bunk, 9-spd., air ride, all alum. Budds, 80% rubber, wetline, lots of chrome, 359,000 total miles, offer. 1974 tank trailer, 8500 gal., vapor recovery, skully system, bottom load, good condition, \$3,500. Shertzer 35 ton low bed, 15" tires w/ramps, new paint and floor. \$5,000. 215/343-0156.

1988 Zimmerman trailer, dual axle, 10,000 GVW, electric brakes, full ramp, excellent condition, \$2850 OBO. 215/269-4344.

2 1977 Mack trucks, w/or without tanks; 3 tanks: 2-4000 gal., 1-5300 gal. 717/582-2355 after 7:30pm except Thur.

2 1985 Peterbilt cabovers, 9-speed O/D trans., 22.5 rubber, 1 w/350 Cummins, 1 w/350 Cat, both excellent. 609/455-9238.

24 1/2 feet roll back truck bed, \$4500 with wench. 717-532-2535.

24' gooseneck, dual wheel tandem axle, 9 ton capacity, \$5900. 717-766-5147 ask for Tom.

3 Possum-belly cattle trailers, reasonable, sell 1 or all. 410-358-0412.

40' Great Dane flatbed trailer, slider, good tires, good brakes, \$1800. Lancaster Co. 717-396-9718.

44' Fruehauf w/5' aluminum grain sides and tarp, \$3900. Lancaster Co. 717-396-9718.

44' Fruehauf flatbed, in fair condition, \$1,800. Lancaster Co. 717-396-9718.

4 Possum-belly cattle trailers, reasonable, sell 1 or all. 410-358-0412.

(6) 1100-20's M&S Byastres 70-95% Tread, \$750. (410)836-9090.

'70 Int. 18' dump truck, rough, \$500. 410-429-1927

'73 Chevy C65 Dump Truck, 10' body, excellent condition. 717/757-7842.

74 IH Haystar 5000, tri-axel, CC, 20,000 FRT., 44 RR, axels, 318 DD, 13 speed trans, was used everyday, make excellent manure truck, \$7,000 OBO. (717)548-3006.

81 Int. 2600 tdm. axle, 22' flat dump, w/grain sides, 56 GVW; 80 Int. 1800, 20 ft. flat, w/grain sides, 27 GVW; 78 Ford P600 step van, 15 GVW; 74 Ford 750 Cab/chassis 27GVW; 65 GMC 5000, 22 ft. van body, 27 GVW. 1970 Diamond Reo Tandem Tractor. 1969 Fruehauf Stainless Steel 13'4"x45' Dry Box. (609)358-0831.

'86 F350 XLT, dual wheels, ext. cab, 4x4, loaded, 490 engine, towing package, \$8900; 20' livestock trailer, gooseneck, \$1800. \$10,500/both. Will separate. 717/225-5243.

'87 Chevy K20 Scottsdale 4x4 Suburban, 6 pass., 350 auto, PB, PS, dual air, AM-FM cassette, 25,000 original miles, excellent condition, \$11,500. 717-733-2873

'87 Dodge 250, HD, 1/2 ton w/8' Reading utility body, 360 auto, PB, PS, AM-FM, 8,510 GVW, 43,000 original miles, 1 owner, new radials, excellent condition, \$8,975. 717-733-2873

'87 Ford XL HD F250, super cab, 460 auto, trailer towing package, PS, PB, cruise, tilt, air, AM-FM cassette, like new condition, \$10,500. 717-733-2873

'87 Ford XL F250, 4x4 w/8' stake body, 351 auto, PB, PS, AM-FM, dual tanks, 8,600 GVW, 41,000 miles, excellent condition, \$8,975. 717-733-2873

'88 Chevy Silverado 4x4 Blazer, 350 FI, auto, PS, PB, PW, PDL, cruise, tilt, air, AM-FM stereo, aluminum whls., black & silver, 1 owner, excellent condition, 88,000 miles, \$8,600. 717-733-2873

'88 Dodge D250, 1/2 ton, 318 EFI, auto, PB, PS, AM-FM, Michelin radials, 6,600 GVW, excellent condition, \$6,700. 717-733-2873

'89 Ford F250, HD, 1/2 ton, 351 FI, auto, PB, PS, AM-FM, 8,600 GVW, 48,000 miles, dark brown, 1 owner, excellent condition, \$8,975. 717-733-2873

'89 Ford XL F250 Super Cab, 351 EFI, 5 spd, PS, PB, cruise, tilt, air, AM-FM, 8,800 GVW, 44,000 miles, new Michelin radials, blue, excellent condition, \$11,995. 717-733-2873

'89 Ford XL Club Wagon, E350, 12 passenger, 351 EFI, auto, PB, PS, cruise, tilt, dual air, 17,000 original miles, 1 owner, excellent condition, \$11,900. 717-733-2873

'90 Dodge LE D250 club cab, HD, 1/2 ton, 360 EFI, 4 spd., PS, PB, air, AM-FM cassette, 8,510 GVW, 13,000 miles, dark blue, like new w/balance of factory warranty, \$12,900. 717-733-2873

'90 Ford F250, HD, 4x4, 351 EFI, auto, PB, PS, AM-FM, dual tanks, 8,600 GVW, new radials, 1 owner, 49,000 miles, \$12,500. 717-733-2873

'90 Ford XL F150, 300 EFI, 5 spd., PS, PB, AM-FM cassette, dual tanks, new radials, 45,000 miles, black, excellent condition, \$8,300. 717-733-2873

ANTIQU: 1944 Chevy 2 ton truck w/grain body. 717-359-5313 evenings.

Chevy C30, 1985, w/11' steel flatbed, 454, AT, PS, PB, AC, good condition, \$5900. WANTED: 12' truck bed. 717-345-4882.

Cummins 555 V8 Diesel Engine, Good Condition, Serial #20101888. \$1200. (717)534-1253.

Diesel Engines: Detroit, 318, 16V71, 12V71, 671, V-653, 6V92, 8.2r Chev. diesel 6.2. Other engines and truck parts. Reasonable prices. Call after 6PM, (215)944-9871.

Gooseneck Trailer, 9-ton, beavertail, tri-axle, new tires & brakes, axle 6 months old, good paint & lights. Presently pulled by Ford F250, \$3600. 301/963-8833.

International 1700 Loadstar dump, 1968, 4WD, low miles, 2 complete 10' snowplow units, 10' Myers angeling electric, 10' road plow, hydraulic, good condition. \$4000. 215-385-3319.

Int. truck tractor, 5+2, V6 diesel, \$650 OBO. 717-393-9025.

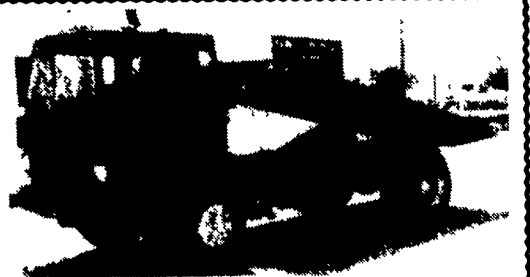
'93 Bison stock trailer, 14', 16'; '93 Hillsboro 8x24 flatbed gooseneck. 410-775-7177.

Electric Hydraulic Tailgate, Never Used, Lift Capacity Not Known, \$600. (717)436-5565.



PICKUP INSERT DUMPER
 For FREE brochure, call toll free 24 hr.
1-800-755-3867

'93 4-Star 22' aluminum stock combo w/dressing room
 '93 Sooner 3 horse slant, bumper pull w/dressing room & tack
 '84 Featherlite 25' gooseneck enclosed trailer used for mobile store
Feather Hill Farm
215/562-5868



1987 MACK MS200
 with NEW Knapheide 16' Grain Body Dump, 54" Sides Not Shown, 175 HP, Diesel, 5 Speed, Power Steering
\$16,900.00 Let's Deal!
1-800-345-2829



6.5 Turbo Diesel, AT, A/C, 12 Ft. Steel Bed, 27,000 Miles
\$16,500⁰⁰

SCHAEFFERSTOWN AUTO & TRUCK SALES
 (Div. of Martin Hardware & Equip. Co.)
 Rt. 501 1 1/2 Mi. South of Schaefferstown, PA 717/949-2812
 Mon. & Wed. 8-5, Tues., Thurs., Fri. 8-8, Sat. 8-4

'93 FORD CREW CABS



IN STOCK:

- (3) '93 Diesel, Stick
- (1) '93 Turbo Diesel
- (In Stock)
- (1) '93 Centurion Diesel, Stick

SHEEHY LEBANON

FORD • MERCURY • LINCOLN
 9-9 Daily, 9-5 Saturday, Sheehy Dept. 1171, 772, 7671 or 513, 5293
 20TH & CUMBERLAND STS. - RT. 422 WEST

32 MISCELLANEOUS

(1)1987 New Yorker Boiler, 400,000 BTUH, oil fired hot water boiler. Best Offer. 717/626-2360.

4 ANTIQUE CLOCKS FOR SALE: (2) box Regulators, (1) w/calendar \$395, \$350; (1) Highgrade quarter chime shelf clock, \$300; (1) O.G. clock 30hr, \$175. 215-287-8934.

(7)1991 Reznor Propane Furnaces, 5000 BTU per hour, 120 volt fan. Best Offer. 717/626-2360.

Big Dutchman Winross trucks for sale, \$50/ea. Supplies are limited. Call HERSHEY EQUIPMENT CO., INC. 717-393-5807 today!

MEAT CUTTING BAND-SAW, \$323. Call 800-445-4669.

Fabricmax Model F-200 Industrial Dust Collector System w/duct work, excellent working condition, \$2000 neg. 717/626-1450 leave message.

BULK SPRING WATER

Available 24 hrs/day
 Pick-up only
 Hudson Farms

Call: **Hudson Farms, Inc.**
 PO Box 487, Avondale, PA 19311
(215) 869-2408

LIVE GAME FISH Fingerlings and Adults, Large and Small Mouth Bass, Spotted and Rock Bass, Bream Crapples, Trout, Channel Cats, Bullheads, Walleyes, Perch, Minnows, Northern, Pickerel, Muskies, Red Gills, Mulletts, Carp, Eels, Turtles, Frogs, Israel Carp. Also Aquatic Plants and Water Lilies. COLORFUL CATALOG \$2.00.
 Truck, Air and Parcel Post Delivery.
ZETTS FISH HATCHERIES
 DRIFTING, PENNA. 16834
 Phone: 614-345-5357

33 RECREATIONAL VEHICLES

Golf Cars, 3 Harley Davidson Gas Powered 3-Wheel Cars, Will Run But Need Work. Make Offer. (215)968-1812.

Wellscargo snowmobile trailer, enclosed 4 place. 609/298-7874.

35 TRUCKS & TRAILERS

'83 Ford F250 Super Cab w/9' flat bed, 460 auto, PB, PS, AM-FM, 8,800 GVW, Class 3 hitch, \$3,600. 717-733-2873

Wanted To Buy Wide Old Attic "Flooring"
 Log Cabins - Summer Kitchens - Early Timber Frame Houses & Sm. Timber Frame Outblids. - Large Two Seater Outhouses - Frame Smoke-houses For Removal. Indian Doors - Interior & Exterior Doors w/Strap Hinges - Wide (Thick) Rofer Boards - Wide (Thick) Chestnut & Yellow Pine Boards, Wide Grainery Boards, Old Stone & Brick Interior Salvage Removal. House (Hand-Hewn) Beams/Rafters Only. ("No Barn Beams or Siding") (Reasonable Priced Demolition Services Avail.) Top Dollar Paid -
 "Travel The Farthest - Pay the Most!
(215) 857-1002 Anytime
 Traveling to All of Pa., Md., Del., N.Y., W. Va.-Va.!