

# Top Lancaster DHIA Cows By Protein For August

(Continued from Page C3)

NELSON + JANE STONER										TWIN OAK FARMS									
168	RH	3-11	305	29,575	3.0	881	2.6	776		327	GR-H	5-0	305	24,102	3.6	860	4.3	1032	
100	RH	2-4	305	25,951	3.1	806	2.6	677		ELVIN L KURTZ									
19	RH	4-0	305	27,434	2.9	800	3.6	986		NELITA	RH	3-11	305	26,135	3.3	860	3.6	935	
136	RH	6-4	282	25,200	3.1	779	2.6	655		MARSHA	RH	4-3	305	23,577	3.4	791	4.0	948	
DAVID W SWEIGART										KEN + LISA WIKER									
97	GR-H	5-9	305	28,118	3.1	880	3.3	926		SLIN	GR-H	5-0	279	26,011	3.3	859	3.7	963	
SHELMAR ACRES										MARGO									
STEPH3	RH	3-1	305	27,650	3.2	879	3.6	1002		WARREN E BURKHOLDER	GR-H	6-5	305	22,375	3.6	815	4.5	1014	
SANDRA	RH	4-1	305	25,253	3.2	804	4.3	1098		PEGGY	GR-H	3-9	305	27,628	3.1	859	4.2	1169	
AUDRY9	RH	8-4	305	24,995	3.2	802	3.6	907		DIANE	GR-H	5-11	305	27,100	2.9	790	3.5	939	
CHARLE	RH	3-11	305	27,723	2.9	792	2.7	744		AMOS N MARTIN									
ROSAL5	RH	6-6	305	25,339	3.1	783	3.1	786		MEG	GR-H	4-1	305	26,990	3.2	858	3.2	875	
PAUL S BORMING										JOHN H HOWARD									
ELLA	RH	3-7	305	26,330	3.3	874	3.8	997		CHARIT	RH	8-11	305	27,310	3.1	853	3.2	874	
FAY	RH	5-8	305	25,946	3.2	835	3.7	953		KARA	RH	5-5	305	24,735	3.3	808	3.5	865	
PRINCE	RH	3-0	305	25,209	3.3	827	4.1	1028		KARL W HERR									
PHOEBE	RH	4-1	305	24,733	3.3	811	3.2	799		37	GR-H	6-2	305	26,878	3.2	848	3.7	995	
STEPHEN L HERSHEY										JOYCE									
48	RH	4-3	305	30,910	2.8	874	2.8	856		7-0	305	22,504	3.6	816	4.5	1002			
20	RH	4-10	305	24,944	3.3	826	3.9	965		FULFOWWAY FARM INC									
PAUL M FAHNESTOCK										VICTOR									
71	GR-H	5-0	305	28,624	3.0	873	3.3	941		RH	3-10	279	27,588	3.1	845	3.7	1009		
HISTI KNOLL FARM										CECIL									
159	RH	6-7	305	28,274	3.1	873	3.1	863		RH	3-1	305	27,808	2.8	787	3.6	998		
37	RH	4-6	305	22,272	3.7	820	4.4	973		MAPLEHOPE FARMS INC									
DOUGLAS L HAWTHORNE										5									
22	GR-H	4-2	305	28,561	3.1	873	2.8	789		GR-H	4-11	305	28,242	3.0	844	3.0	858		
164	GR-H	6-9	305	23,522	3.3	777	3.7	881		MEADOW VISTA FARM									
HENRY S RIEHL										948									
PEARL	GR-H	5-0	305	27,388	3.2	873	3.6	988		RH	4-2	305	28,916	2.9	843	3.3	944		
ARLENE	GR-H	6-6	305	27,862	2.8	786	3.3	933		58	RH	2-10	305	27,029	3.0	808	3.0	803	
CALVIN D KEENE										ALVIN K FISHER									
CECLA6	GR-H	7-0	305	28,061	3.1	872	3.4	959		WANDA	GR-H	3-8	305	27,357	3.1	842	3.4	939	
INEZ 8	RH	6-2	305	24,317	3.3	814	3.6	886		TIMOTHY L NETZLER									
TOM ZARTMAN										MARGE									
109	GR-H	3-11	305	27,823	3.1	867	3.6	1012		RH	5-7	305	25,543	3.3	841	2.8	719		
VERNON R UMBLE + SON										IVAN S STOLTZFUS									
TRILIU	RH	4-5	305	28,272	3.1	867	3.5	1000		NELIND	RH	4-3	305	25,041	3.3	838	3.2	810	
EARL W LANDIS										ROHRER BROTHERS									
ROBIN	RH	8-1	305	27,307	3.2	866	3.5	957		LOUISE	RH	4-0	305	26,799	3.1	838	3.6	975	
GRAYWOOD FARMS										LLOYD B SENSENIG									
78	RH	5-2	305	27,235	3.2	865	3.6	993		RAE	GR-H	4-9	305	27,202	3.1	834	3.2	871	
479	GR-H	4-0	305	26,800	3.0	813	3.2	846		JOHN E COLEMAN JR									
354	RH	4-11	305	22,946	3.4	786	3.2	728		AVA	RH	6-1	305	26,080	3.2	834	2.3	603	
43	GR-H	3-1	305	27,915	2.8	782	3.2	901		MINNIE	RH	1-11	305	23,812	3.4	817	2.8	677	
439	GR-H	4-1	305	23,995	3.2	770	3.5	848		THOMYWOOD HOLSTEINS									
CLIFFORD&JOYCE BLANK										NANDY									
ROSIE	RH	6-2	305	27,597	3.1	865	3.3	923		RH	4-10	305	25,305	3.3	833	3.6	908		
CALVIN L ZINNERMAN										TILLIE									
DEEN	RH	6-8	305	28,237	3.1	865	2.8	801		RH	5-11	305	25,654	3.0	771	3.3	843		
HOPE	GR-H	5-1	305	23,329	3.3	776	3.6	837		SPRING BELLE FARM									
										BARB	RH	4-1	305	25,053	3.3	833	4.2	1051	
										DIXIE	RH	4-1	305	25,260	3.2	809	3.9	985	
										DENNIS R BENDER									
										23	GR-H	2-3	305	25,949	3.2	830	3.6	924	
										99	GR-H	6-6	305	27,564	2.8	774	3.0	840	

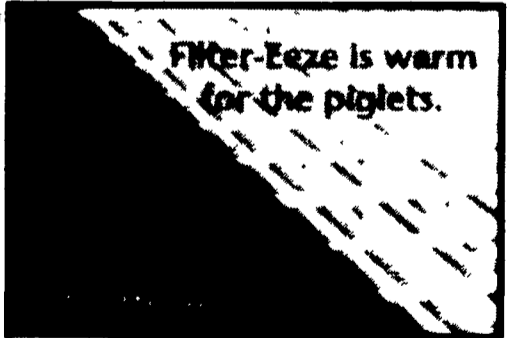
(Turn to Page C7)

**NEW!**  

**THE ULTIMATE FLOOR**


**FARROWING - Cast Iron And Plastic**  
**DOUBLE**  **Hog Flooring Systems**

Tested and proven through worldwide use! Full 10 Year Non-prorated Warranty!



**Filter-Eeze is warm for the piglets.**

Double L/Schonlau cast iron slats have been proven to outperform any other sow flooring.

Filter-Eeze, polypropylene creep slats provide the perfect environment for maximum growth.

- Non-porous crowned surface
- Sows get up and down easily.
- Fewer crushing deaths
- Sows eat, drink, & nurse better with less stress

Optional Comfort Zone creep slat features Solid Section

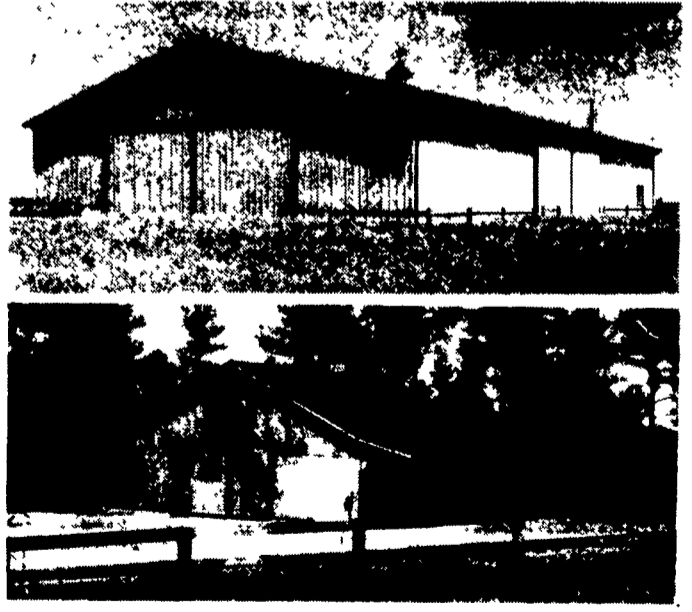
- Increases thermal comfort
- Reduces drafts
- Eliminates heat mats
- Throw area for creep feeds

- Produce heavier pigs at weaning time.
- Sows have a longer service life.
- "Thermal" comfort keeps your piglets cozy and content
- Prevents diseases and chilling.
- Simple installation... only two slats needed on each side in the creep area. Can be easily cut.

**FRI-COUNTY**  
 CONFINEMENT SYSTEMS, INC.

**MORTON BUILDINGS**  
 Since 1903

- Horse Barns
- Riding Arenas
- Garages
- Warehouses
- Offices
- Shops
- Equipment Storage
- Aircraft Hangars



**MORTON BUILDINGS, INC.**  
 Excellence — Since 1903

**CONTACT:**  
 3368 York Rd. Gettysburg, PA 17325 717/624-3331  
 P.O. Box 126, Phillipsburg, NJ 08865 908/454-7900

Call or write today for more information **1-800-447-7436** Illinois only, call 1-800-428-6688