



FARMER BOY AG INC.



Your Complete Swine, Poultry & Ventilation Equipment Center

CLEARANCE SALE SPECIALS ON VENTILATION EQUIPMENT!

**ADD INCOME TO YOUR FARM
CONTACT FARMER BOY AG...**

Your Professional Company



2200 HEAD FINISHER

- Assistance In Securing Building Permits
- Custom Design
- Assistance In Nutrient Management Planning
- Assistance In Financing

★ PA'S OLDEST & MOST EXPERIENCED SWINE BUILDING & EQUIPMENT COMPANY

Tunnel Ventilation For Maximum Cooling

WALL HOUSINGS: Galvanized slant housings with flanges for mounting to exterior wall or exhaust applications in tunnel ventilated and cooled buildings. The slant arrangement protects the components from weather, incorporates wiring knockout, provides convenient shutter mounting with quick release clips, includes outlet screen and enhances air flow through velocity regain. Housings are available knocked down crated with fan and shutters, motors shipped separately



TRUCKLOAD SALE..FANS.. 36" & 48"



Breeze Master

BELT DRIVE OR DIRECT DRIVE PANEL FANS FOR AGRICULTURE

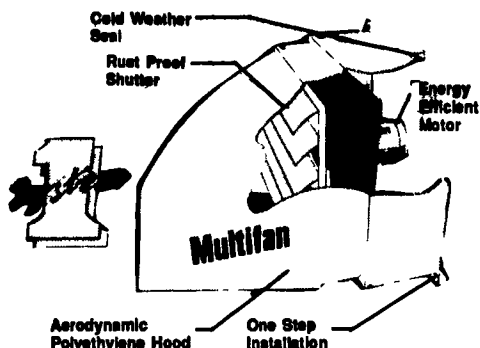


- Galvanized Construction
- Wide Cambered Propeller
- Riveted Blades

- Unique Captured Bearings — Strong formed bearing casing maintains proper alignment and spacing
- Vertical Support Frame — Supports both fan and motor to assist pulley alignment and easy adjustment
- Screens Pre-cut — For easy, quick mounting of motor
- Totally enclosed motors with shielded ball bearings, continuous duty type and energy efficient.
- Optional Discharge Diffuser Cone — Increases performance of fan without additional HP
- Optional Belt Tightener — Maintains proper belt tension for peak airflow

Multifan

CONTROLLED VENTILATION



Excellent Ventilation With Variable Speed For Continuous Air Exchange

Multifan System 1

ENERGY EFFICIENT ENCLOSED MOTORS



- Heavy-duty totally enclosed motors with sealed ball bearings are designed for continuous work load.
- Available in two-speed.
- Built-in thermal overload for low line-voltage protection on all single phase motors.

ALUMINUM SHUTTERS:

- All Aluminum Construction
- Counter Balanced Blades
- Nylon Bearing
- Stainless Steel Hinge Pins
- Low Air Resistance *
- * Reduces Sticking in Dusty and Moist Conditions *



SEE US FOR YOUR REMODELING NEEDS

Compare the difference!

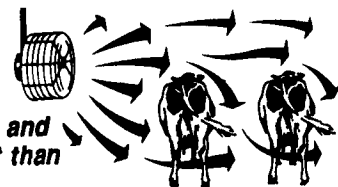


(#VS20=6000 c.f.m., #VS24=8500 c.f.m.)

SCHAEFER

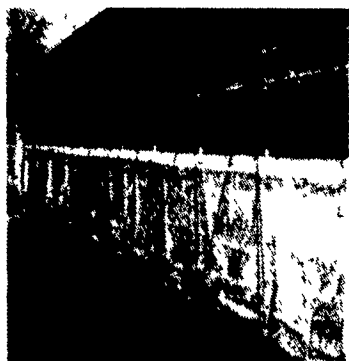
Barn Kooler®

The only patented air circulation fan on the market! Because of its design, it provides more air movement and therefore more cooling effect than any other circulation fan.

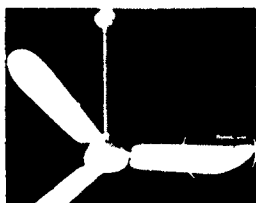


U.S. Pat #4,819,183

CURTAINS - Clear Or Insulated Hardware Winches



CANARM CEILING FANS

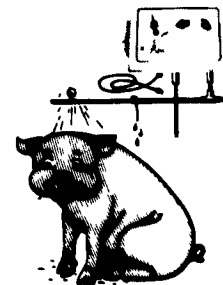


56" Metal Blades

Beat the Heat!

UNIVERSAL COOLING SYSTEM

- 3 COOLING SYSTEMS
- Droplet
 - Mist
 - Sprinkle



**Wednesday, September 29, 1993
Thursday, September 30, 1993
Lancaster Host Resort**

Full Line Of Parts In Stock For Your Poultry And Hog Needs



24 Hour Service



410 E LINCOLN AVE (RT 422)

MYERSTOWN, PA 17087

PH. 717-866-7565

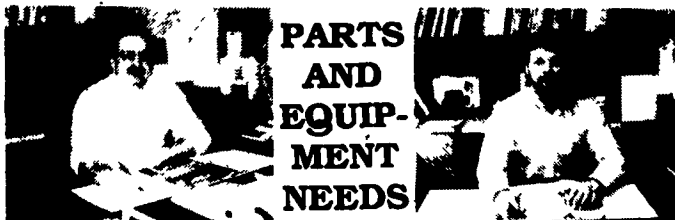
Hours: M-F 7:00-5:00; Sat. 7:30-11:30

Check Our Warehouse Prices

WE SHIP UPS



SEE JAY OR PAUL FOR YOUR



PARTS AND EQUIPMENT NEEDS

JAY ZIMMERMAN — Sales

PAUL HIGH — Sales