

Public Auction Register

OCTOBER

WED. OCT. 20 - 1PM Valuable Real Estate, 70 Acre M/L, Lanc. Co. Dairy Farm. Located 1 mile N. of Maytown, Pa. on Rt. 742. By Betty Jane Good. Harold "Abe" Shaffner, Mark Diefenderfer, aucts.

WED. OCT. 20 & THURS OCT. 21 - Large Two Day Sale Of Farm Equipmt., Etc. At Our Sales Lot Located 6 Miles South Of Chambersburg, Pa., One Mile East Of Marion, Just East Off Rte. 81 Along Rte 914 Owners, Jerrold & Gloria Oaks. Marion Auction Service, 5174 Horst Rd., Chambersburg, Pa 17201

WED. OCT. 20 - 7:30PM, Feeder Cattle Sale. Located Four States Livestock Sales, Hagerstown, Md.

FRI OCT. 22 - 1:30PM, State Graded Feeder Pig Sale. Located At Carlisle Livestock Market, Inc., Exit 13, South Off I-81, Left Onto Alexander Spring Road 717-249-4511.

FRI. OCT. 22 - 3:30PM Glassware and China. Antiques and Household goods and tools. Located at Leesport Farmers Market, just off Rt. 61, Leesport, Berks Co., Pa. Ella Emerich Estate. Ken Leiby Auct.

FRI. OCT. 22 & SAT. OCT. 23, Prison Ministry Auction. Farmersville. John D. Stauffer, Auct.

SAT. OCT. 23 - 8:30AM Tractors, farm equip, horse-drawn equip., collectables, misc. York Co., Pa Take Rt 30 to rt 616, Take Rt 616 S ± 3.3 mi. to saugre to York New Salem. Turn R onto Stoverstown Rd & go W ± 5.5 mi to sale OR from Rt. 516 take Stoverstown Rd. E ± 0.4 mi.

to sale. Raymond Schrum, owner. Melvin Haines, Ralph Brennehan, aucts.

SAT. OCT. 23 - 9AM, Farm Machinery, Household Goods. Located 3 Miles S Of Gap Along Zook Road, From Gap Take Route 41 S. To Second Cross Road Past Dutch Way Farmers

Market. Turn Left On Zook Road To First Farm On Left. West Salisbury Township, Chester Co. Owners, Mast & Anna Stoltzfus. Leon Kurtz & J. Omar Stoltzfus, Aucts.

SAT. OCT. 23 - Dutch Country Calf Sale at Leb. Area Fairgrounds. Harry H. Bachman, auct.

SAT. OCT. 23 - Progress of Pen-Col 3rd Edition, Dennis Wolff, Millville, Pa. The Cattle Exchange.

SAT. OCT. 23 - 9AM For Titus and Anna Keller Estate, 1376 Mastersonville Road, Manheim. Will be selling furniture, Winross trucks, and Ford advertising items. John D. Stauffer Auct.

SAT. OCT. 23 - 9 AM Real Estate, Antiques, Household Goods, 2 Second St., Quarryville, Pa. By J. Landis Kreider, Estate. Kreider, Kline & Good, Aucts.

TWO DAY COUNTRY AUCTION

VALUABLE 4 1/2 ACRE FARMETTE ANTIQUES & DOLLS

SATURDAY, SEPT. 25, 9:00 A.M.

REAL ESTATE 11:00 A.M.

MONDAY, SEPT. 27, 3:00 P.M.

Just off Fruitville Pike at 871 Holly Tree Road, Manheim, PA.

ANTIQUE AUTOMOBILE

REAL ESTATE 11:00 A.M. 4.4 acre lot, Penn Township, Lancaster County, Penna. Stone raised rancher with kitchen, livingroom, diningroom, two bedrooms, bath, attic, storage, basement and lower garage combination. Property also has small bank barn, masonry constructed outbuilding and stone springhouse, holly trees and fruit trees throughout. This is a great property for the rural minded family. **Inspection Sat. Sept. 4 and Sat. September 18, 1:00 P.M.-2:30 P.M.** Please inquire for further information.

Auction For: CATHERINE K. EITNIER

E.M. Murry Associates

10 S. Broad St.
Lititz, PA 17543
Elmer Murry 626-2636
Richard Murry 626-8175
Ken Miller
Professional Auctioneers,
Appraisers and Advisors
Since 1953
AU-00648-L



PUBLIC AUCTION LYKENS VALLEY FARM

SATURDAY, OCTOBER 16, 1993 at 8:30 A.M.

One Mile North of GRATZ and Route 25 in Lykens Township, Dauphin County, PA. Watch for Auction Sign along the Gratz to Killingerstown Road at Garden Spot Road, 1st Farm East. 40 Miles NE of Harrisburg.

85 ACRE FARM

Approximately 70 ACRES TILLABLE in High State of Cultivation, balance Pasture and Wooded Land. Farm Pond.



1st Floor, 3-ROOMS & BATH
2nd Floor, 4-BEDROOMS
WALK-IN BASEMENT
OIL HOT WATER HEAT
BANK-TYPE BARN, other OUTBUILDINGS

Seldom do you have an opportunity to purchase a farm of this size along a quiet Township Road in Lykens Township. The farm buildings are located along a gentle slope with southern exposure. Check it out!

FOR INSPECTION CALL: 717-365-3553. After inspection, ARRANGE YOUR FINANCING, BE PREPARED TO BID & BUY AT THE AUCTION!

TERMS: 10% down the day of sale, further terms & conditions to be announced when real estate is offered at 11:00 A.M.

Also selling: FARM EQUIPMENT, TOOLS, TRUCKS, AUTOS, CAMPER, HOUSEHOLD FURNISHINGS, ANTIQUES, COLLECTIBLES & GUNS including: Farmall Super C; Farmall M; Oliver Cletrac Model DGH Dozer w/9' Blade; 1990 CHEV. CAVALIER 4-DR. AUTOMATIC w/AIR only 1,200 Miles; 1982 CHEV. S-10, V-6 SPORT PICK-UP w/TOPPER, 42,000 Miles; 14- Ft. Frolic Camper.

ALBERT A. EBERT and IRENE R. EBERT, Owners

Betty J. Wolfe, Attorney-in-Fact

David H. Rattigan, Esq. Williamson, Freidberg & Jones

DEIBERT MIKE, AUCTIONEER, AU1599-L 717-425-3313
GEORGE, REALTOR & AUCTIONEER, AU209-L

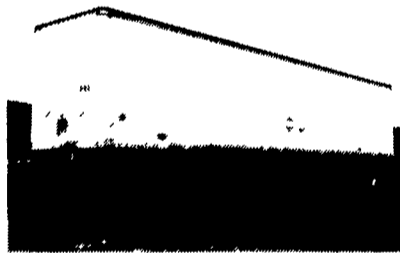
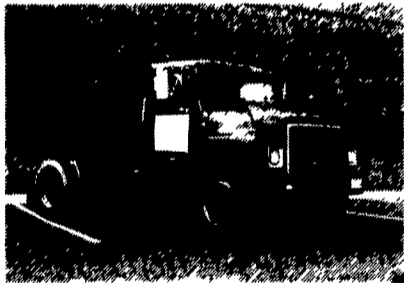
— Watch For Complete Ad On October 9 —

ABSOLUTE AUCTION BY ORDER OF SECURED PARTY

Saturday, September 18, 1993 10:00 A.M.

Hatfield, Pennsylvania (Philadelphia/Allentown Area)

(187) SINGLE AXLE TRUCK TRACTORS & (100) TANDEM AXLE VAN TRAILERS



NOTICE: A major New England based trucking company has filed bankruptcy. First Fidelity Leasing Group, Inc. has ordered that the trucks and trailers, which they have a security interest in, be sold to the highest bidder. All trucks and trailers will be sold free and clear of all liens and to the highest bidder regardless of price.

LOCATION: The auction will be held at 2990 Bergey Road in Hatfield, Pennsylvania. Hatfield is located approximately 25 miles north of Philadelphia and 25 miles south of Allentown and is between Route 309 and the Northeast Extension of the Pennsylvania Turnpike.

SPECIAL NOTE: This is a well maintained fleet. However, conditions may vary. A few units will not be running or in need of repair. There are no small items in the sale, selling will start promptly at 10:00 a.m.

1989 KENWORTH SINGLE AXLE TRUCK TRACTORS

(10) 1989 KENWORTH Model 22-210 Single Axle COE Truck Tractors, powered by Cummins 6CT8.3, 210 hp diesel engine and Fuller 6 spd. transmission, equipped with 20,000# rear, fixed 5th wheel, spring suspension, air brakes, power steering, and 295/75R22.5 tires.

These tractors are in good to very good condition with good tires.

1989 FORD SINGLE AXLE TRUCK TRACTORS

(58) 1989 FORD Model LN9000 Single Axle Truck Tractors, powered by Cummins LTA10, 270 hp diesel engine and Spicer 7 spd. transmission, equipped with 23,000# rear, fixed 5th wheel, spring suspension, air foils, air brakes, and 295/75R22.5 tires. The majority of these tractors are in good condition with good tires.

1989 INTERNATIONAL/NAVISTAR SINGLE AXLE TRUCK TRACTORS

(119) 1989 INTERNATIONAL/NAVISTAR Model 1955 Single Axle Truck Tractors, powered by International DT466, 210 hp diesel engine and Spicer 7 spd. transmission, equipped with 23,000# rear, fixed 5th wheel, spring suspension, air brakes, and 295/75R22.5 tires.

The majority of these tractors are in good to very good condition with good tires.

1989 STRICK TANDEM AXLE VAN TRAILERS

(51) 1989 STRICK Model E8, 45' Tandem Axle Van Trailers, equipped with 13'0" overall height, 96" inside height, 88" door opening, scuff plate, roll-up rear door, smooth side white aluminum, hardwood floors, sliding tandems, manual landing gear, and 295/75R22.5 tires.

1988 STRICK TANDEM AXLE VAN TRAILERS

(49) 1988 STRICK Model E8, 45' Tandem Axle Van Trailers, equipped with 13'0" overall height, 96" inside height, 88" door opening, scuff plate, roll-up rear door, smooth side white aluminum, hardwood floors, sliding tandems, manual landing gear, and 295/75R22.5 tires.

The majority of these trailers are in good to very good condition with good tires.

TERMS: Complete Payment Sale Day In Cash Or Guaranteed Funds.

INSPECTION: One week prior to sale from 8:00 a.m. until 5:00 p.m.

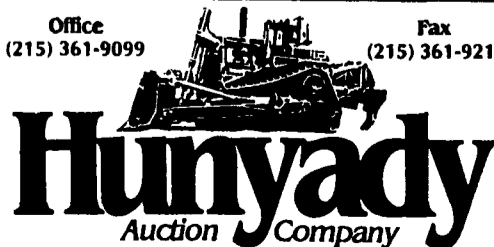
TEMPORARY TAGS: Temporary license plates will be available on site through an outside vendor.

SALE SITE PHONE: Call Auction Company Office at 800-233-6898 or (215) 361-9099.

PA AUCTION LICENSE NO. RY-000099-L

CALL OR WRITE FOR DESCRIPTIVE BROCHURE

Office (215) 361-9099 Fax (215) 361-9212



1909 South Broad St. • Lansdale, PA 19446