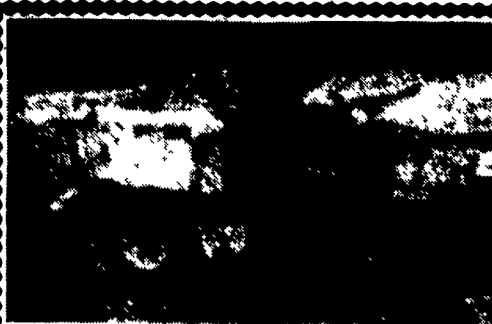


Military 2 1/2 ton, 6X6 all wheel drive, fuel truck, 1200 gallon tank, rated, holds over 1500 gallon, 27,000 original miles, good condition, runs and operates. \$3000. Phone (215)579-7084.

Skid steer front end loader, Mustang 440, Owatonna (yellow), Ford 4 cyl. engine, hydrostatic, gas, \$5750. 717-656-4191 Loader can be seen Snyders, PA., RT 309.

WANT TO BUY all makes and models of construction equipment. (301) 694-6148, (301)371-9299 fax.

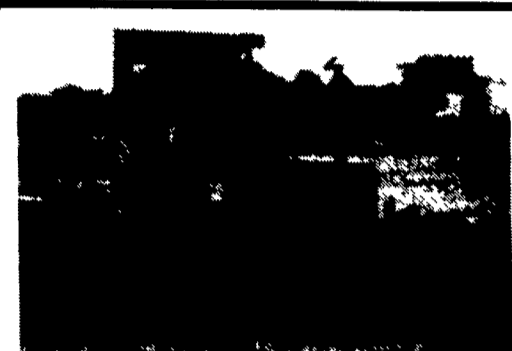
1974 IHC 412 Scrapper, good engine & tires, ropes, manuals \$12,000.00
Huber road maintainer, Model M-52, remodified to full hyd. blade, 12 volt, new rear tires, manuals \$3,000.00
York Co.
Ph. 717-244-8702



SCOOT CRETE
Self-Propelled Concrete Buggy with tailgate, 2 forwards/1 reverse. Two (2) available.
\$1,500.00 each

HEAVY EQUIPMENT LOADER PARTS, INC.

RD 2 Box 2230, Rt. 22
Grantville, PA 17028
1-800-446-0505



CATERPILLAR D3 Crawler Dozer
3 Forward/ 1 Reverse Transmission, Power Angle Tilt Blade, Winch. Good Condition
\$11,500.00

HEAVY EQUIPMENT LOADER PARTS, INC.

RD 2 Box 2230, Rt. 22
Grantville, PA 17028
1-800-446-0505

PARTS PRICED RIGHT DISMANTLING MOST MAKES & MODELS

OF CONSTRUCTION EQUIPMENT
Cat IHC Gallon
Case Michigan Wabco
John Deere Hough Dynahoe
Trojan Terex Koehring
Drott Hein Werner AC/Flat Allis & Others

Over 600 Machines Dismantled

NATIONWIDE PARTS LOCATING SERVICE
We have two Computer Parts Locator Networks. Nationwide & Canada, ready to serve you. In less than a minute over 400 Used & New Parts Dealers will receive your parts request. Parts are located easily & at substantial savings. Try Our Services.

Save \$\$\$ Parts Shipped Anywhere Direct To You. All Parts Guaranteed
"We Return All Phone Calls"

BALANDA EQUIPMENT CO., INC.

P.O. Box 407 • Route 29 • Palm, PA 18070
Phone: (215) 679-3900
Fax: (215) 679-8727

TOLL FREE: 1-800-322-8030

2 FARM EQUIPMENT WANTED

WANTED:

USED FORD & KUBOTA TRACTORS

Call 717-949-6501
Daytime

1a CONSTRUCTION EQUIPMENT

FORKLIFTS
All types and sizes, priced from \$800 and up, if we don't have it we will try to find it.

717-225-3798
OR
717-873-0529

2 FARM EQUIPMENT WANTED

JD 435W corn head or quick tach feeder house for 95 JD combine. 717/667-3070.

JD 630, good mechanical condition, good sheet metal. 717-938-3517.

Wanted Two Row Corn Picker, Mounted on JD or Farmall or Two Row Pull Behind, Ready to Go. Call (302)284-8774.

Wanted Wood Mizer Sawmill, Pre91 Model, 21 Foot Bed. Call (717)374-9158 Ask for William.

3 SILOS AND UNLOADERS

14' Silomatic unloader, used 4 years, stainless steel fan, \$1750. 215/445-5796.

20' Clay Silo Unloader with cable tripod switch box, 7 1/2 horse electric motor. Price negotiable. 717/683-5217.

A.O. Smith Silos, 17X45 and 20X30. Reasonable. (215)469-9633.

Bargain Door Frames for Fickes and other silos, damaged, reduced price. 215/593-1172, Elmer.

Fiberglass Bulk Feed Bins



Capacities from 2.5 ton to 30 ton



Now With New Expansion Ring For Easy Installation

If Your Silo Needs New Life...

Try Our Poly Silo Liners

- THE ADVANTAGE OF A POLY LINER -
- Spoilage is reduced around doors.
- Feed is exposed to less oxygen - better fermentation.
- Allows storage of high moisture grains or dry grains in a conventional silo.

- Delays repair or replacement of corroded silos.
- Prevents corrosive acids from contacting silo wall - extends silo life.
- Quick installation.
- Effectively seals silos from air and weather.

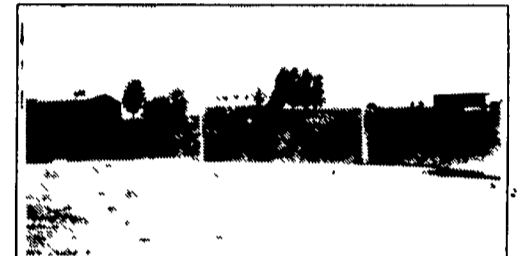
The Liners Are Manufactured To Fit Most Standard Diameter Silos.

ORDER NOW FOR SEPTEMBER DELIVERY CALL 1-800-468-4909

AARON GROFF and SON FARM & DAIRY STORE

103 Clearview Dr., Ephrata, PA 17522 Phone (717) 354-4631
Store Hours - Mon., Thurs. & Fri. 7 A.M. to 8 P.M.
Tues. & Wed. 7 A.M. to 5 P.M.; Sat. 7 A.M. to Noon

Bunker Silos



Precast Concrete Bunker Silos available in center divider T-walls and our new outside T-wall panels that can be bolted together or A-frame panels.



477 East Farmersville Rd., New Holland, PA 17557
(717) 355-2361

DEPENDABLE SALES & SERVICE

STAR SILOS ★ Lancaster SILOS

Patz SILO UNLOADERS

Patz GUTTER CLEANERS

RISSLER TMR MIXERS

UEBLER POWERED FEED CARTS

Cedar Crest Equipment
Two Convenient Locations

608 Evergreen Rd. • Lebanon, PA 17042 (717) 270-6600
RD 2 Box 271 • East Earl, PA 17519 (717) 354-0584

WE CUSTOM DESIGN SYSTEMS FOR YOU



WARNING, ALL SILO OWNERS

FARMERS: If you need shotcrete for your silo - Give us a call! We will be able to schedule you for this fall.

We also have silo pipe and distributors on hand - ready to install

Shotcrete is also good for repairing silo walls.

Lancaster Silo Co., Inc.

2008 Horseshoe Rd. • Lancaster, PA • (717) 299-3721
CALL TOLL FREE 1-800-770-3721



TRAIL KING
20 Ton Air Brake Trailer, 1981
\$6,500.00

HEAVY EQUIPMENT LOADER PARTS, INC.

RD 2 Box 2230, Rt. 22
Grantville, PA 17028
1-800-446-0505



HUBER Maintainer Grader
Gas, Runs and Operates. Needs Some Hydraulic Cylinder Repair Work
\$1,000.00 Firm

HEAVY EQUIPMENT LOADER PARTS, INC.

RD 2 Box 2230, Rt. 22
Grantville, PA 17028
1-800-446-0505

Hyster 5000 Lb.



Pneumatic Tires, All 4 New LP Gas, PS, Side Shifter, Lifts 144" H
\$5,800
(215) 269-1871
Ches. Co., PA