

Wells Fargo snowmobile trailer, enclosed 4 place. 609/298-7874.

Int. truck tractor, 5+2, V6 diesel, \$650 OBO. 717-393-9025.

Mack R model cab, original paint, no rust, no dents, \$3000. 304-876-6653 evenings.

International 1700 Loadstar dump, 1968, 4WD, low miles, 2 complete 10' snowplow units, 10' Myers angling electric, 10' road plow, hydraulic, good condition, \$4000. 215-385-3319.

Reefers: (2) Mercedes, Model 1419-(1) 1989 22'-(1) 1987 20'. 717/354-4424 8-5.

Military 2 1/2 ton, 6X6 all wheel drive, fuel truck, 1200 gallon tank, rated, holds over 1500 gallon, 27,000 original miles, good condition, runs and operates. \$3000. Phone (215)579-7084.

One used 16' Grain Dump, \$400 OBO. 717/222-9090.

**1974 Int. Truck, Cab & Chassis**

671 Detroit engine, 13-speed trans., PS, air brakes, 35,000 GVW, will take 16' body good condition, \$2500.

**717/786-1119 evenings.**



**1987 MACK MS200**  
with NEW Knapheide 16' Grain Body Dump, 54" Sides Not Shown, 175 HP, Diesel, 5 Speed, Power Steering  
**\$16,900.00 Let's Deal!**  
**1-800-345-2829**



**For Sale**  
**1975 Chevy C90 Tk.**  
6-71 Engine, 9 Speed Trans., 44,000 Lb. Rears, 90% Rubber, With 1985 Wic. 3600 gal. Manure Spreader Tank, Good Condition  
**\$11,900 Lanc. Co.**

**For Sale**  
**X107 - 6 Speed Lowhole Mack Trans**  
With Bell Housing, Good Condition  
**\$1,800 Lanc. Co.**

**717-733-8528**

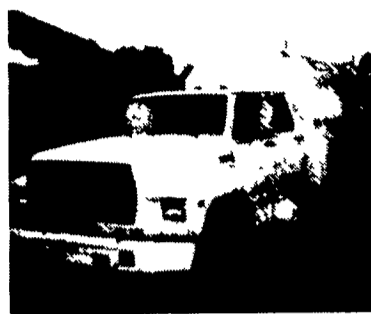
**Huntingdon Equipment**

Rentals Available **GOOD USED EQUIPMENT**

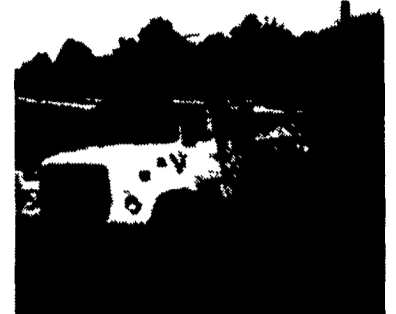
Huntingdon Valley, PA • **215-672-9667 • 1-800-543-3833 • Eddie**



**20 Ton P&H Crane 3 Sec. Hyd. Boom** mounted on a 1968 F.W.D. both engine gas (new front 89), fleet maintenance.



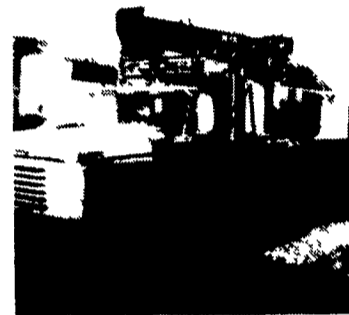
**1985 F-600 8.2 Diesel, Auto, 5 Man Cab, Utility With Rollup Door On Rear, Clean, Low Mileage, 1 of 3.**



**1979 Ford V8 10-Speed, Air, 14,000 Lbs. Boom, 2 Speed Auger, Upper Controls, 4 Outrigger, Dig Holes-Lift-Put Man In Air. This Unit Does It All.**



**Holan 70' Double Bucket 75' working height** mounted on 1981 Western Standard, 6x6 Flatbed, CAT 3208, Auto.



**Need a Lift? We Have A Large Selection Of Boom Trucks Up To 14,000 lbs. Cap. Some With Post Diggers.**



**Bucket Trucks 28' to 65' Gas and Diesel. Call For Details.**

**DIGGER DERRICKS/AERIAL BUCKETS/UTILITY EQUIPMENT**

Mark VII - Pickups - Broncos - Bronco II - Stake Body - Crew Cab

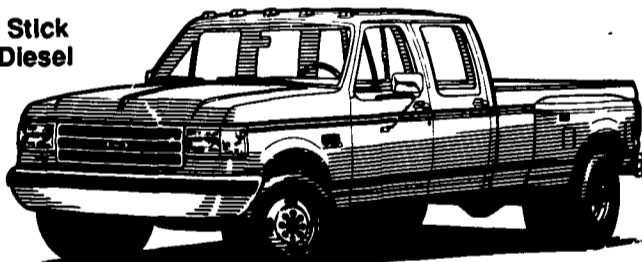
Custom Vans  
XLT  
Grand Marquis  
Marquis

Lynn  
Topaz  
Diesel Pickups  
Mustang  
T Bird

**'93 FORD CREW CABS**

*In Stock*

- (3) '93 Diesel, Stlck
- (1) '93 Turbo Diesel (In stock)
- (1) '93 Centurion Diesel, Stlck



**'93 FORD F-150**

#1442, 6 Cyl., 5 Spd, PS, PB, AM-FM St., Rear Step Bumper  
**DELIVERED PRICE**

**\$10,995\***



**'93 FORD RANGER XLT Sliding Rear Window, 5 Spd., Cast Alum. Wheels, 60-40 Split Bench Seat**



**\$10,523**

**'93 CONVERSION VANS**

*5 To Choose From!*

V8, AC, Automatic, PS, PB, TV, Loaded, HI-Tops & Low Tops



\* Prices include applicable rebates plus \$500 cash or trade. Tax, tags and doc fees additional. Payments at 10.9% APR for 60 Months.

<p><b>'92 FORD RANGER 4 Cyl., 5 Spd., AM/FM Cassette, Bucklets #P1651A</b> .....On Sale \$9,793</p>	<p><b>'91 GMC JIMMY 4x4 6 Cyl., AT, Only 20,000 Miles, Spotless #1747A</b> .....On Sale \$15,797</p>	<p><b>'92 DODGE DAKOTA Extra Cab, 3.9 V6, 4 Spd., 18,000 Mi., One Owner, #P1604B</b> .....On Sale For \$12,288</p>
<p><b>'92 CHEVY C1500 4x4, V8, AT, AC, One Owner, Local Trade, 23,000 Miles, #1716A</b> .....On Sale \$16,988</p>	<p><b>'78 FORD E150 CONVERSION VAN V8, AT, AC, Super Clean, Local Trade #1074B</b> .....On Sale \$5,399</p>	<p><b>'92 FORD F150 XLT 302 V8, 4 Spd., 1-Owner #1609A</b> .....\$14,989</p>
<p><b>'91 CHEVY S10 TAHOE V6, AT, Wheels, 29,000 Miles #1695A</b> .....On Sale \$12,993</p>	<p><b>'92 FORD F250 5.8 liter, AT, 30,000 Mi., Like New #P1675...Sale Price \$14,999</b></p>	<p><b>'91 FORD E150 WINNEBAGO VA, AT, TV, Loaded, 15,000 Miles, #P1664</b> On Sale \$18,988</p>

- '88 Bronco II XLT, V8, 4 Spd., AC, Local Trade, Super Clean #P1530B.....\$11,679
- '90 Ford Bronco, Eddie Bauer, 8 Cyl., AT, Loaded, Green/Tan, 35,000 MI. #P1708.....\$17,897
- '90 Ford F150 XLT, 6 Cyl., 5 Spd., 13,000 Miles, 2-Tone, #P1654.....\$14,379
- '89 Ford F150 XLT, 6 Cyl., 5 Spd., AC, 28,000 MI. #1967A.....\$10,999
- '80 Ford F100 6 Cyl., AT, Local Trade, Excellent Condition, #1920A.....\$2,995
- '78 Ford Conversion Van, V8, AT, AC, Garage Kept, Very Clean, #1074B.....\$5,499
- '90 Ford F150 XL, 302 V8, AT, AC, #P1653.....\$14,999
- '88 Jeep Grand Wagoneer, 53,000 MI., V8, Loaded w/Leather #1224A.....\$12,999

Unless This Emblem Is On Your Car Or Truck You Probably Paid Too Much

9-9 Daily  
9-5 Sat.  
717-272-7671



**SHEEHY LEBANON**  
**SHEEHY FORD LINCOLN MERCURY INC.**  
20th & Cumberland St., Lebanon

Parts Dept. Open  
Daily 8-5  
Sat. 8-12  
717-273-8168

Tempo - Cougar - Continental - Town Car - 4x4 - Box Van - Rangers