

Lehigh Holds Market Swine Roundup



Tom Leidy, left, Leidy, Inc., buyer of the grand champion hog at the Lehigh County 4-H Market Swine Sale, held recently at the Leesport Farmers' Market, is shown with exhibitor April Lazarus of Germansville. The hog sold for \$2.60 per pound.

ALLENTOWN (Lehigh Co.) — Thirty-three members of the Lehigh County 4-H Swine Club showed and sold market hogs at their roundup on August 18 at the Leesport Farmers Market.

April Lazarus, Germansville, sold her 245-pound grand champion to Leidy, Inc., Souderton, for \$2.60 per pound. The reserve grand champion, shown by Julie Bond, Kutztown, went to Hatfield Quality Meats, Hatfield, at \$2 per pound. The average price for all 63 animals sold was 73¢ per pound. Approximately 30 buyers participated in the sale.

The following club members won top awards in the fitting and showing contest: Kurt Haas, Orefield, champion fitter; Stacey Dietrich, Germansville, reserve champion fitter; Stephen Wessner, New Tripoli, champion showman; and Tracy Lazarus, Germansville, reserve champion showman.

Ken Fetterolf, swine breeder

from Centre Hall, judged the roundup.



Julie Bond, left, exhibitor of the reserve grand champion hog at the Lehigh County 4-H Market Swine Sale, held recently at the Leesport Farmers' Market, is shown with buyer, Tom Moyer of Hatfield Quality Meats, Hatfield. The hog sold for \$2 per pound.

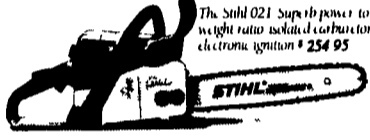
The Chain Saws For People Who Want To Act Like Lumberjacks, Not Work Like Them.

If you know a little about the timber business, you know that Stihl chain saws have been used by professional woodcutters for over sixty years.

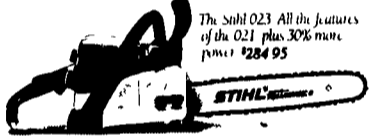
So maybe you think Stihl equipment is too good for a suburbanite or farmer or anyone else who needs to cut wood on an occasional basis.

Well, we're happy to tell you that Stihl makes a whole series of chain saws with your needs in mind.

But don't confuse



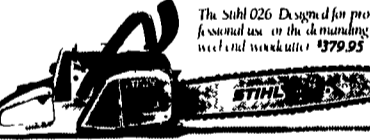
The Stihl 021. Superb power to weight ratio, isolated carburetor, electronic ignition. \$254.95



The Stihl 023. All the features of the 021 plus 30% more power. \$284.95



The Stihl 025. More powerful than the 023 plus convenient side chain tensioner. \$314.95



The Stihl 026. Designed for professional use on the demanding weekend woodcutter. \$379.95

them with discount-store chain saws.

All Stihl saws are designed for performance, ease of handling and starting, and durability.

Now, about the 026 shown at the bottom, we'll admit we sell this saw to professional woodcutters. But it's also bought by people who simply put a lot of hours on a saw every year.

And by the way, when were you ever unhappy because you bought a product that was too good?

For The Part Of You That Promised You'd Never Compromise.

STIHL®

Available at these servicing dealers

Bechtelsville
PASSMORE SERVICE CENTER, INC.
RD 1, Rt. 100
215-367-9084

Dallastown
TRI-BORO CONCRETE, INC.
435 Locust St.
717-246-3095
1-800-632-9018

East Earl
GOODS LAWN & GARDEN CENTER
Route 23
717-354-4026 Ext. 34

Elizabethtown
MESSICK FARM EQUIPMENT, INC.
Rheems Exit-Rt. 283
Elizabethtown, PA
717-367-1319, 717-653-8867

Elm/Lebanon
BOMBERGER'S LAWN & GARDEN
Elm: 717-664-4663
Lebanon: 717-272-4155

Ephrata
WES STAUFFER ENGINES & EQUIPMENT
23 Pleasant Valley Rd.
717-738-4215

Ephrata, Hershey
HOLLINGER'S LAWN & GARDEN EQUIP.
Ephrata, PA 717-738-1131
717-656-2710
Hershey, PA 717-533-4060

Gap
GAP POWER EQUIPMENT
Corner of Rt. 30 & Rt. 887
717-442-8970

Hamburg
SHARTLESVILLE FARM SERVICE
RD 1, Box 1382
215-488-1025

Jonestown
BLUE MOUNTAIN ENTERPRISES, INC.
Rt. 72 South
717-865-2994

Myerstown
EBLING LAWN & GARDEN SERVICE
608 E. Lincoln Ave.
717-866-6720

Ono
SHUEY'S SALES & SERVICE
Jonestown Rd.
717-865-4915

Ronks
A & B SALES & SERVICE
370 Newport Road
2 Miles South of Rt. 23
Along 772 Thru Monterey

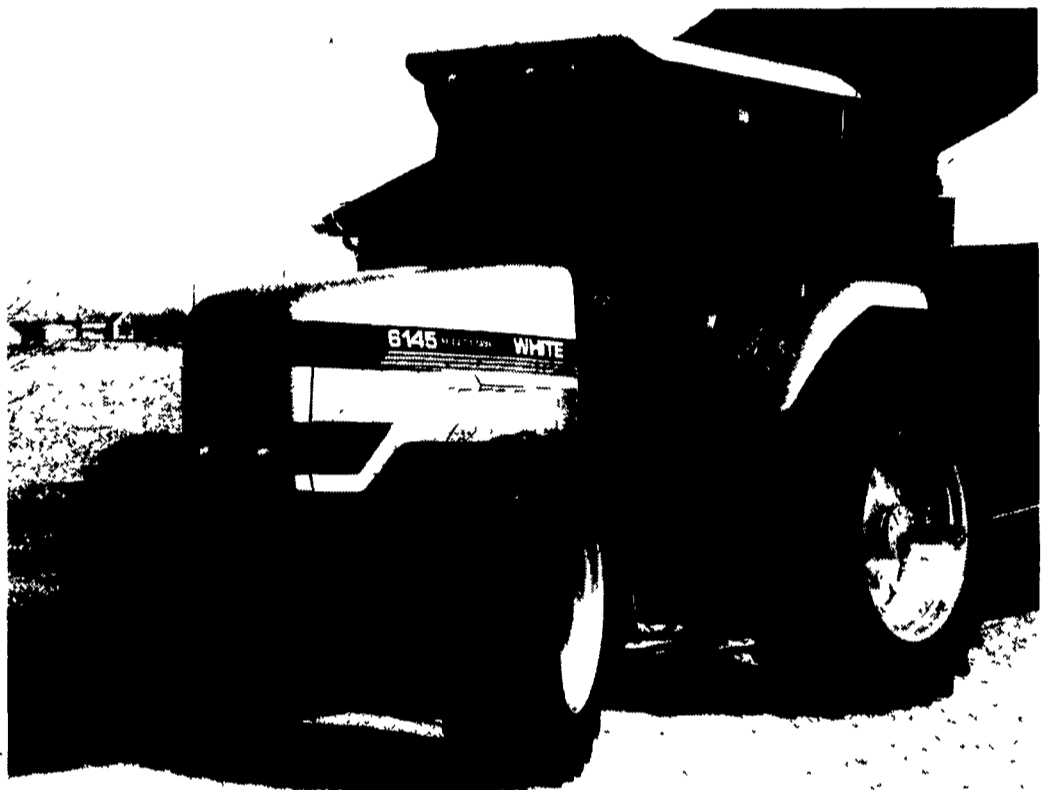
Schaefferstown
MARTIN HARDWARE & EQUIPMENT CO.
Rt. 501, 1 1/2 Miles South of Schaefferstown, PA
717-949-6817

Shippensburg
LEINBACH FARM EQUIP.
1120 Riker Hwy.
717-532-5511

Tamaqua
CHARLES S. SNYDER, INC.
RD 3
717-386-5945

Hancock, MD
HANCOCK BLOCK TRUE VALUE
220 Fulton St.
301-678-7242

Whiteford MD
ENFIELD EQUIPMENT INC.
720 Wheeler School Rd.
301-879-5090



POWERFUL ENOUGH FOR A TOUGH JOB. AGILE ENOUGH FOR ANY JOB.

Introducing the White Workhorse 6145. With a high torque rise 140 PTO hp Cummins engine and the most advanced powershift transmission ever put in a farm tractor.

Just a tap of your finger gives you complete control of 18 forward speeds and 9 reverse. And with pre-selectable and programmable speeds, greater comfort and visibility, fieldwork has never been easier or more productive.

Put a real Workhorse to work for you. Check out the new 6145 powershift tractor. At your White dealer today.



NECESSARY TOUGHNESS.

See Your White Dealer Listed Below

G & D FARM EQUIPMENT CO.
RD 5 Penryn Rd.
Manheim, PA
717-664-2207

WITMER'S INC.
Box 368
Columbiana, OH 44408
216-427-2147

MILLER EQUIPMENT CO.
RD 1
Bechtelsville, PA
215-845-2911

HOUGHTALING'S GARAGE
RD 2 Box 239
Middlebury Center, PA
717-376-3361

SHUEY'S SALES SERVICE
Ono, PA
717-865-4915

STANLEYS FARM SERVICE
RD 1 - Off Rte. 125
Klingerstown, PA
717-648-2088

FRANK RYMON & SONS
State Rt. 31 South
Washington, N.J.
908-689-1464

DISTRIBUTED BY KEYSTONE STIHL